

A GUINEA PIG HOLDER

FRANKLIN C. WRAY

Laboratory Technician, Des Plaines Valley (Illinois) Mosquito Abatement District

A new style of device for holding a guinea pig motionless while mosquitoes obtain a blood meal has been constructed for use in our laboratory. The drawing (Fig. 1) and the photographs (Figs. 2 and 3) illustrate the construction and use of this holder.

The holder is made of galvanized iron with over-all dimensions of 8 inches by 4 inches by 2½ inches. Three inches at one end has a top, providing a place for the guinea pig to hide his head while acting as a blood donor. A wad of cotton batting may be stuffed in this end to adjust the various sized animals in the holder so that their bodies will be exposed to the mosquitoes. The remainder of each side of

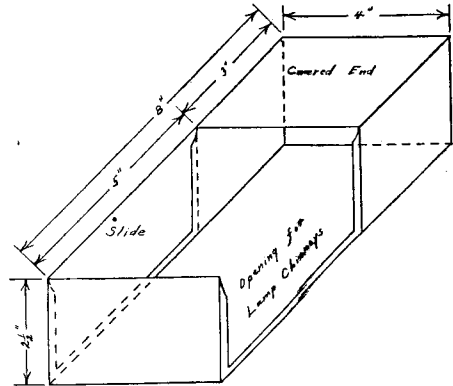


Fig. 1. Design for construction of guinea pig holder. The slide is removable, and may be inserted on left or right.

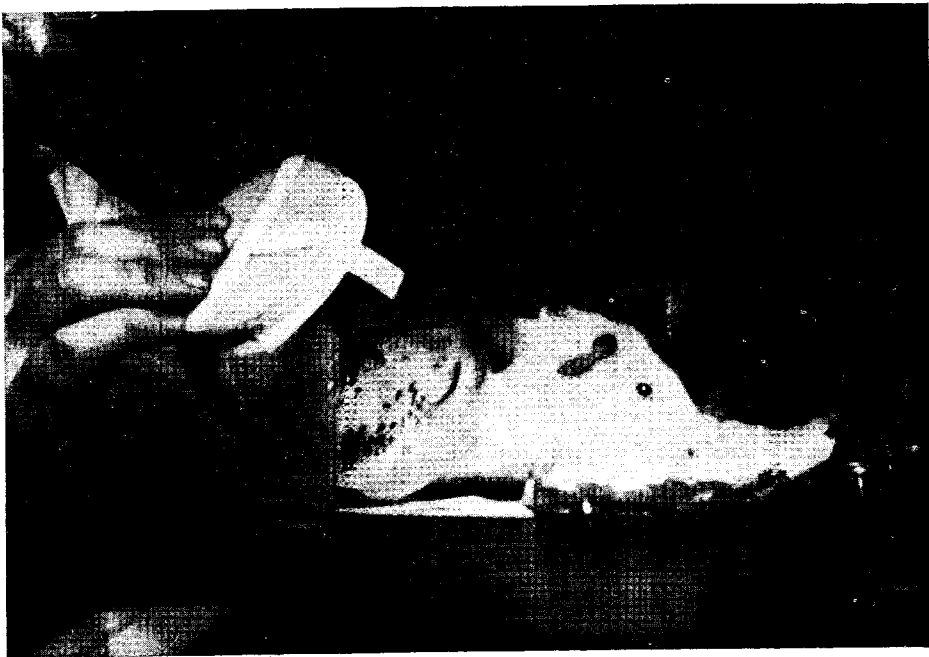


Fig. 2. Feeding adult mosquitoes a blood meal is a difficult and time wasting procedure without the guinea pig holder.

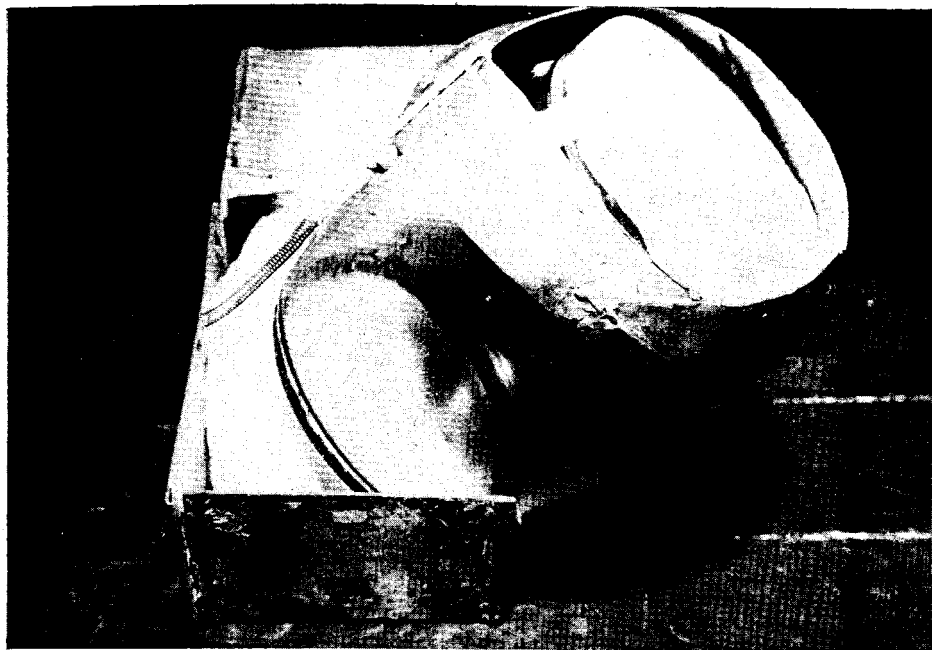


Fig. 3. Feeding adult mosquitoes a blood meal with the aid of the guinea pig holder saves time, and multiplies the productive capacity of the operator.

the box has been cut away, providing a space just large enough for a lamp chimney full of mosquitoes to rest on the clipped side or back of the animal. Either the right or left side of the animal can be exposed by shifting the sliding section to the opposite side of the box. The $\frac{1}{4}$ -inch edge at the bottom of the opening serves to hold the lower edge of the chimney in place. A metal collar fits over the top of the chimney and by means of a spring holds the chimney in constant contact with the animal's side or back, allowing the mosquitoes an uninterrupted opportunity to obtain their blood meals by biting

the animal through the mosquito netting that is stretched across both ends of the chimney.

The use of this device has caused the guinea pig to remain motionless and quiet for periods of as much as two hours while a series of chimneys were placed in contact with his body. Previously it had been necessary to hold him by hand, an unsatisfactory method, inasmuch as he was constantly struggling to escape, thereby disturbing the feeding mosquitoes and lengthening the operation as well as taking up the time of one person who with this device can continue with other duties.