

## SOME MOSQUITO CONTROL OPERATIONS IN BERGEN COUNTY, NEW JERSEY

By VERNON CONANT, Superintendent  
Bergen County Mosquito Extermination Commission



Fig. 1. Hackensack, New Jersey, February, 1942. Power shovel with  $\frac{1}{2}$ -yard drag-shovel attachment. Clearing the channel of a brook through a woodland swamp.

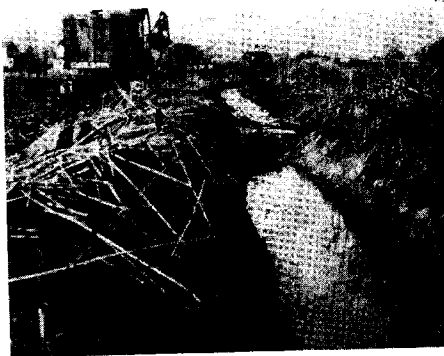


Fig. 2. Mulinari Ditch, January, 1943. Power shovel with 7 cubic foot orange peel bucket, cleaning and grading a 5 foot ditch.



Fig. 3. East Riser, New Jersey, January, 1943. Power shovel with  $\frac{1}{2}$  yard dragline bucket widening the channel of a brook from 5 feet to 12 feet for flood control.



Fig. 4. Moonachii Creek, March, 1943. Power shovel with  $\frac{3}{8}$  yard dragline bucket, cleaning large drainage creek on salt marsh.

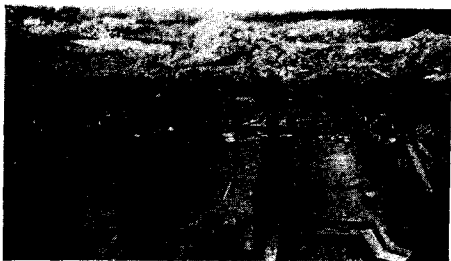


Fig. 5. Tide Gate. Riser, New Jersey,  
December 12, 1941.

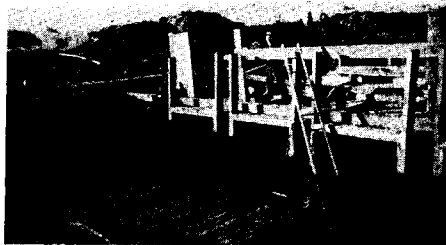


Fig. 6. Tide Gate. Riser, New Jersey,  
December 19, 1941.



Fig. 7. Tide Gate. Riser, New Jersey,  
December 26, 1941.



Fig. 8. Tide Gate. Riser, New Jersey,  
December 31, 1941.



Fig. 9. Tide Gate. Riser, New Jersey,  
January 12, 1942.