

CORRESPONDENCE

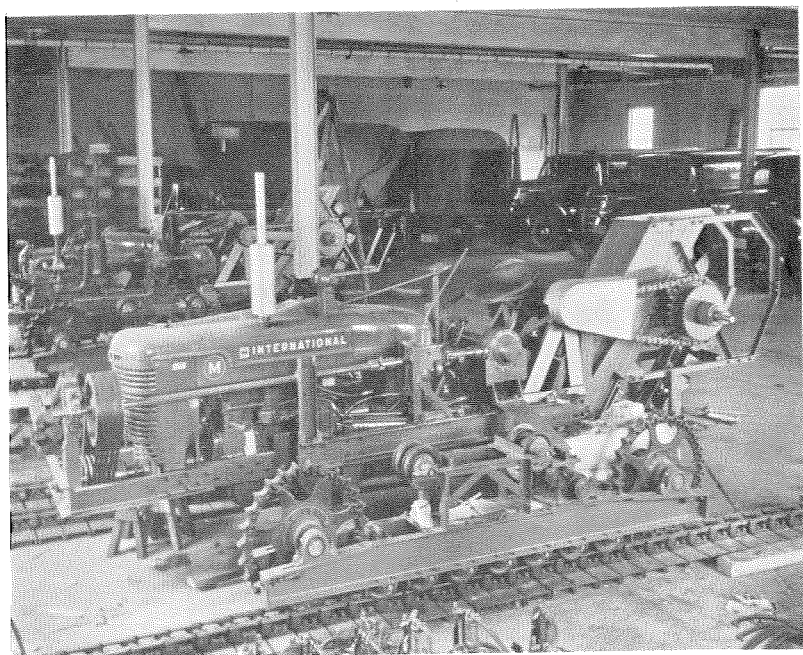
EXTRACT FROM A LETTER TO THE ASSOCIATE EDITOR

Dear Helen Louise:

Busy, busy, still busy! C. T. Williamson is just completing 2 new salt marsh ditchers (about \$7,500 and 7 tons each) from my plans—Cape May and Burlington Counties each want one apiece so I have to try to make arrangements for their construction and supervise it when it gets going. Ocean county wants a

crawler crane on special crawlers which I must design, and Morris County (Jim Hart) wants his new hydraulic ditching hoe improved by adding two new extra features—longer crawlers, and a device to swing the digger unit while the crawlers remain stationary. Much machinery!

(Signed) T. D. MULHERN



C. T. Williamson's new ditcher now under construction.
(Chris is Director, Suffolk County Mosquito Control Commission, Long Island, N. Y.)