

spaces more strongly but similarly convex, except the 8th, carinate and closely, uniseriately, coarsely granulate, with stout reddish, uniseriate hairs; the 2nd and 3rd united at the base of the apical prolongation to form its dorsal carina, the 8th more strongly carinate on the apical third, the 9th granulate throughout its length, sparsely and more feebly on the middle third, rather coarsely and irregularly at the base.

The metasternum has the middle line sulcate on the caudal half; the abdominal sternites are closely, moderately granulate-punctate, more coarsely than the metasternum and more coarsely than in the female, and with distinctly longer hairs.

The type, a female, is from *Tsuga heterophylla*, taken at Campbell River, B. C. It is in the collection of the Entomological Branch, Department of Agriculture, Ottawa.

#### PLATE VI.

A. *Platypus wilsoni*, ♀. Greatly enlarged. Slightly modified from Entomological Bulletin No. 7, Dept. of Agriculture, Canada.

B. *Platypus wilsoni*, ♂. Apices of the elytra. Greatly enlarged.—(Original).

#### PLATE VII.

1, Boring dust of *Platypus wilsoni*; 2, Maxilla; 3, Labium; 4, Maxillary Palp, greatly enlarged; 5, Antenna. All enlarged. (Original).

### DESCRIPTION OF ELEVEN NEW SPECIES OF CHALCID FLIES.

BY A. A. GIRAULT, WASHINGTON, D. C.

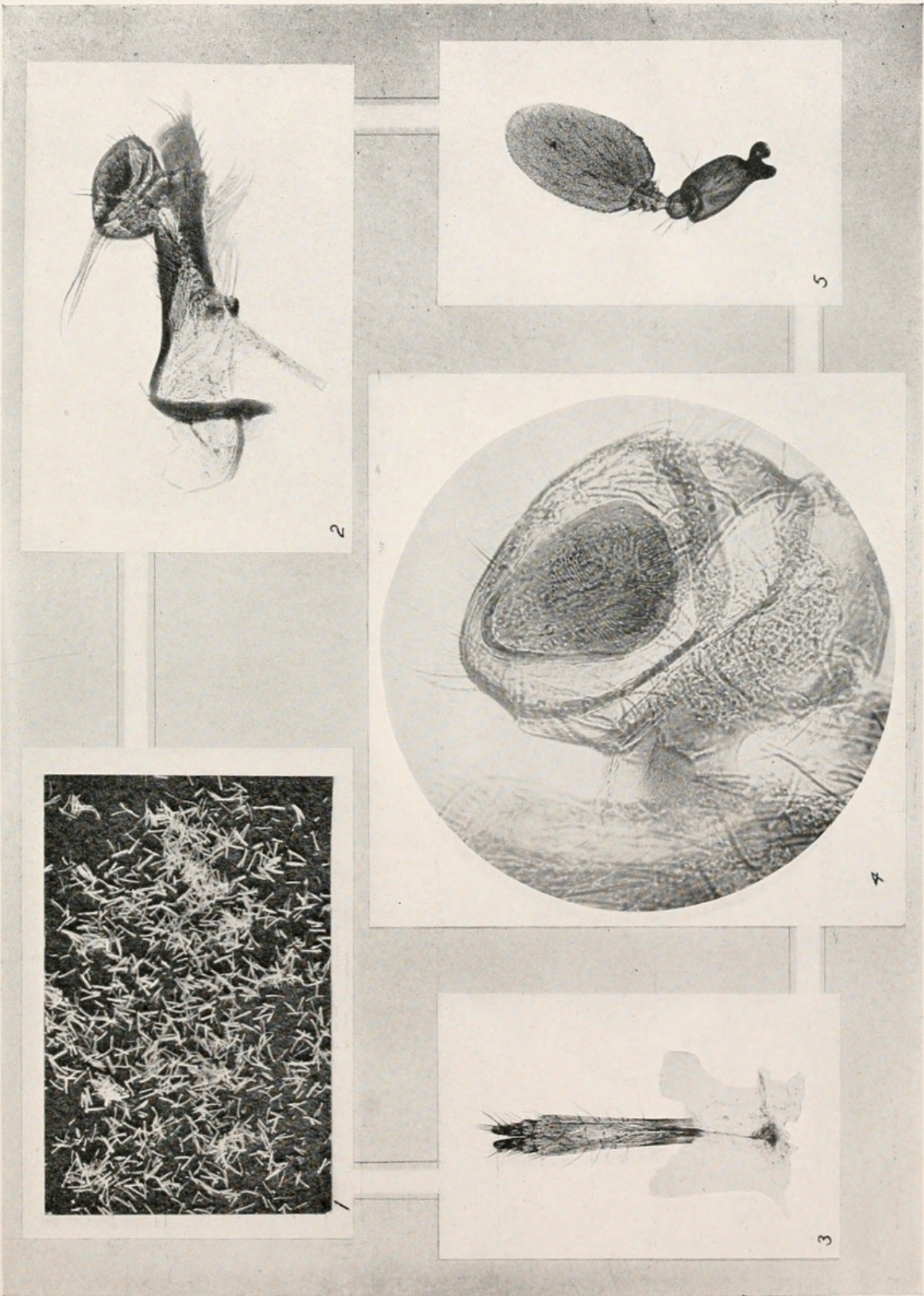
#### ***Neomphaloidella ceroplastæ*, n. sp.**

*Female*—Length 1.00 mm.

Differs from *Tetrastichus periplanetæ* Crawford in being darker, the scape is partly metallic, there is no lateral carina on the propodeum, the latter is not distinctly scaly, there are punctures along the lateral margin of the scutum.

Greenish black, the wings hyaline, the venation pale yellow, the knees, tibiæ and tarsi (except the last joint) distal half of scape and the pedicel, except the proximal half above, golden yellow. Funicle joints subequal, each nearly twice longer than wide, slightly longer than the pedicel; club 1 as long as funicle





PLATYPUS WILSONI, N.SP. (See p. 100.)





3, half the length of the club, the third joint with a convex base and a distinct terminal nipple. Scape a little compressed. Mandibles tridentate, the second two teeth weakly separated, the third truncate, but not large. A line of delicate punctures across the pronotum. Stigmal vein of moderate length.

The male is about the same, but the propodeum and flagellum not seen.

Described from one male and seven females reared from *Ceroplastes galeatus* Newstead, Kampala, Uganda, Africa (C. C. Gowdey).

*Types*—Catalogue No. 19914, U.S.N.M., three females on tags, one male and two females head on a slide.

***Neomphaloidella pulchriventris*, n. sp.**

*Female*—Length 1.20 mm.

Dark metallic purple, the wings hyaline, the legs, antennae and abdomen lemon yellow, with the following exceptions: Distal joint of club (washed with purple), proximo-dorsal half of pedicel, bases of coxæ, middle femora (except ends), a cinctus just below middle knee, lateral margin of abdomen, the acute distal fifth (or somewhat more) of the abdomen and two faint cross-stripes on abdomen (both interrupted along the meson) between the centre and the distal purple. The marginal stripe of abdomen is broken or partly so just where it joins the distal purple and there is a marginal dot at middle of the abdomen. Second two ring-joints very short. Funicle 1 nearly thrice longer than wide, a little longer than 3, which is longer than any club joint or the pedicel. Club with a distinct nipple. Mandibles tridentate. Venation yellow, the stigmal vein long. Fore wings broad. Propodeum with delicate median and lateral carinæ, the former flat. Abdomen conic-ovate. Sculpture usual.

Described from one female captured by sweeping in the open forest, October 10, 1915, at Glenndale, Prince George County, Maryland.

*Type*—Catalogue No. 19915, U.S.N.M., the above specimen on a tag, the head on a slide.

A second female, same place, October 24, 1915.



Girault, Alexandre Arsène. 1916. "Description of eleven new species of chalcid flies." *The Canadian entomologist* 48, 100–103.

<https://doi.org/10.4039/Ent48100-3>.

**View This Item Online:** <https://www.biodiversitylibrary.org/item/18797>

**DOI:** <https://doi.org/10.4039/Ent48100-3>

**Permalink:** <https://www.biodiversitylibrary.org/partpdf/1018>

**Holding Institution**

MBLWHOI Library

**Sponsored by**

MBLWHOI Library

**Copyright & Reuse**

Copyright Status: NOT\_IN\_COPYRIGHT

This document was created from content at the **Biodiversity Heritage Library**, the world's largest open access digital library for biodiversity literature and archives. Visit BHL at <https://www.biodiversitylibrary.org>.