

Bamboosiella nov. gen. (Phlaeothripidae, Tubulifera) from India

By T. N. ANANTHAKRISHNAN, Lecturer in Zoology,
Loyola College, Madras (S. India)

Genus **BAMBOOSIELLA** nov.

Antenna 8-segmented, slender as in *Liothrips*; joint 3 emarginated within, 8 slightly narrowed at base, but not constricted, joint 1 narrowed towards apex; sense-cones rather long and fine, though on 3 and 4 *not* setiform. Head elongate, slightly narrowed towards base, widest across eyes, cheeks with a few weak spines especially in posterior third, as in *Hoplandrothrips*. Mouth-cone short, rounded, maxillary stylets confined to mouth-cone, very short, fine. Eyes large, oval; anterior ocellus on a slight elevation but not surpassing interantennal projection. Postocular setae long, knobbed, longer in the male. Prothorax much broader than head, heavy in the male, with black internal middle ridge. Bristles long, all knobbed, inner anteromarginals vestigial; epimerals single. Pterothorax tapering from the middle towards apex.

Legs slender, but forefemora of female distinctly, of male strongly enlarged, foretibiae unarmed, foretarsi of both sexes with tooth, stouter in the male. Wings narrowed towards middle, but from middle to apex little widened, with up to 7 double-fringe cilia. Tube short, conical, anal setae long, longer than tube, dark.

Bristle 2 of segment IX of male stouter, much shorter than bristle 1, though only spine-like. Bristles on IX (female) long, pointed nearly as long as tube.

Genotype—*Bamboosiella bicoloripes* sp. nov.

Dr. Priesner, who has kindly examined the specimens, informs me that this genus has very close resemblance to *Adraneothrips* Hood and *Hoplandrothrips* Hood. *Adraneothrips* differs from this genus in the smaller eyes, shorter prothorax, forefemora not or scarcely enlarged and cheeks unarmed. *Hoplandrothrips* has

long, closely approximated maxillary stylets (very short in *Bamboosiella*) and forefemora of male with one or two apical teeth. Similarly the genera *Apelaunothrips* Karny, *Phylladothrips* Priesner and *Mesothrips* Zimmerman, also show affinities, though much less than *Adraneothrips* and *Hoplandrothrips*. *Apelaunothrips* has similar coloration, but differs in the band-shaped maxillary stylets, short cephalic production, thin forelegs, unarmed tarsi and reticulate ocellar region. *Phylladothrips* on the other hand has short head, no double fringe, foretarsi of female and cheeks unarmed; *Mesothrips* also has head constricted at base, but antennae are thicker, joint 3 shorter and strongly conical, more strongly sclerotised in general.

I wish to express my sincere gratitude to Dr. Priesner of Egypt for kindly examining the specimens and for his invaluable advice and suggestions.

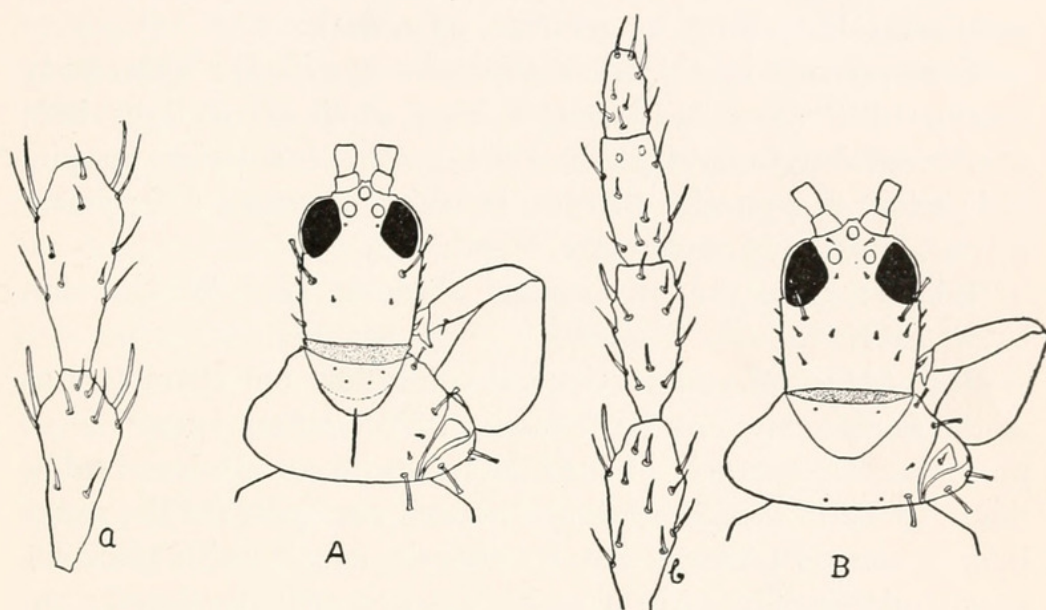
***Bamboosiella bicoloripes* gen. et sp. nov.**

Macropterous female: Total body length * 1.862 mm. Abdomen bicolorous, segments I–VI almost yellow, VII–X blackish brown like head and thorax. Antennals 1, 2, 7 and 8 dark, the remainder pale yellow. All legs wholly yellow, coxae darkened; patches of red pigment scattered all over the brownish areas, except those of antennal region. Eyes dark, ocelli with dark red pigment. Wings hyaline, wing fringes brown.

Head elongate, 238 μ long from front margin of eyes, 196 μ wide across eyes, slightly narrowed at base (182 μ); cheeks with a few weak spines, the posterior-most one, the longest. Mouth-cone short, rounded, 84 μ long, 70 μ wide at apex, reaching the middle of the prosternum. Eyes large, oval, 98 μ long, 56 μ wide, occupying 0.4 time the head length; interocular space 70 μ wide. Ocelli well developed, anterior ocellus placed far forward, but not surpassing interantennal projection; posterior ocelli placed just above the middle region of eyes. Postocular setae 64 μ long, knobbed, placed 29 μ from cheeks and 26 μ from lower margin of eyes. Antenna 8-jointed, slender, nearly twice as long as head; joint I narrowed at apex; joint III emarginated

* Posterior abdominal segments little telescoped.

within; joint VIII narrowed slightly at base, but not constricted. Antennal joint III and IV each, with an outer and inner sense cone, *rather long and fine, not setiform*; joints V and VI each, with only an outer sense cone, slightly shorter than those on III and IV. Measurements of joints: Length(width) in μ : 38(38 at base, 35 at middle, 32 at apex); 51(26 at middle); 77(26); 83(26); 70(26); 58(26); 45(22); 32(13).



Bamboosiella bicoloripes gen. et sp. nov.

- A. Head and prothorax of male.
 B. Head and prothorax of female.
 a. Antennal joints 3 and 4.
 b. Antennal joints 5-8.

Prothorax 168μ long at middle, shorter than head, being 0.7 time as long; much broader than head, 168μ wide at anterior margin and 350μ at base including coxae. Prothoracic bristles long, anteroangulars moderately so, knobbed; inner anteromarginals vestigial; anteroangulars 32μ long; midlaterals 35μ ; epimerals 58μ ; coxals 43μ . Pterothorax tapering from middle towards apex, 350μ long and 378μ wide at middle.

Legs slender but forefemora distinctly enlarged, 98μ wide at middle; forefemora and tibiae unarmed, foretarsus with a distinct tooth.

Forewings 812μ long, narrowed at middle, but, from middle

to apex, little widened, with 7 fringe cilia; basal wing bristles strong and well developed, measuring 38, 48 and 64 μ long, respectively, knobbed.

Abdomen narrower than pterothorax, widest across IV and V segments; wing retaining bristles well developed, 2 pairs in each of the segments II–VI. Bristle 2 of segment IX, 147 μ long, pointed, nearly as long as tube; tube short, about 0.65 time head length, 63 μ wide at base, and 35 μ wide at apex. Anal setae 182 μ long, longer than tube, dark.

Measurements in μ (unless otherwise specified): Total body length, 1.862 mm.; head, length 238; width across eyes 182; prothorax, length at middle, 168; width at anterior margin, 224; width at posterior margin, inclusive of coxae, 350; pterothorax, length 154; anal setae, length 182.

Habitat: *Holotype* on bamboo sheaths, 12–4–1954, Coimbatore, T.N.A. Colls. No. 256.

Male (Macropterous): General coloration and characters as in the female, but for the following: Postoculars longer, 67 μ ; prothorax on one side in the allotype, with an abnormal additional epimeral bristle, while the normal condition for the genus is only one. Prothorax heavier than in female, with black internal middle ridge. Prothoracic bristles well developed; anteroangulars 32 μ ; epimerals 57; coxals 42 μ long.

Forefemora strongly enlarged, 112 μ wide at middle, forefemora and tibiae unarmed, foretarsus with a stout tooth.

Abdomen widest at base, gradually tapering towards apex. Segments VII–IX 203, 168 and 98 μ wide, respectively. Bristle 2 of IX segment stouter and shorter than B.1; B.1 and B.2, 141 and 160 μ long, respectively. Tube shorter than head, half as wide at apex, as at base.

Measurements in μ : Total body length 1.918 mm. Head, length 217; width across eyes 154; eye, length 91; prothorax length at middle 182; width at anterior margin, 182; width at posterior margin inclusive of coxae, 308; pterothorax, length 308, width at middle, 322; tube length 140; width at base 49, at tip 28; anal setae, length 196.

Habitat: 2 males on bamboo sheath. 12–4–1954. Coimbatore, T.N.A. Colls. No. 256.



Ananthakrishnan, Taracad Narayanan. 1957. "Bamboosiella nov. gen. (Phlaeothripidae, Tubulifera) from India." *Entomological news* 68, 65–68.

View This Item Online: <https://www.biodiversitylibrary.org/item/20718>

Permalink: <https://www.biodiversitylibrary.org/partpdf/10369>

Holding Institution

Smithsonian Libraries and Archives

Sponsored by

Smithsonian

Copyright & Reuse

Copyright Status: In copyright. Digitized with the permission of the rights holder.

Rights Holder: American Entomological Society

License: <http://creativecommons.org/licenses/by-nc-sa/3.0/>

Rights: <https://biodiversitylibrary.org/permissions>

This document was created from content at the **Biodiversity Heritage Library**, the world's largest open access digital library for biodiversity literature and archives. Visit BHL at <https://www.biodiversitylibrary.org>.