

A Ribbon Cutting

NEWS RELEASE:

SUPERVISOR CHACE TO CUT RIBBON AT ARBORETUM HOME DEMONSTRATION GARDENS

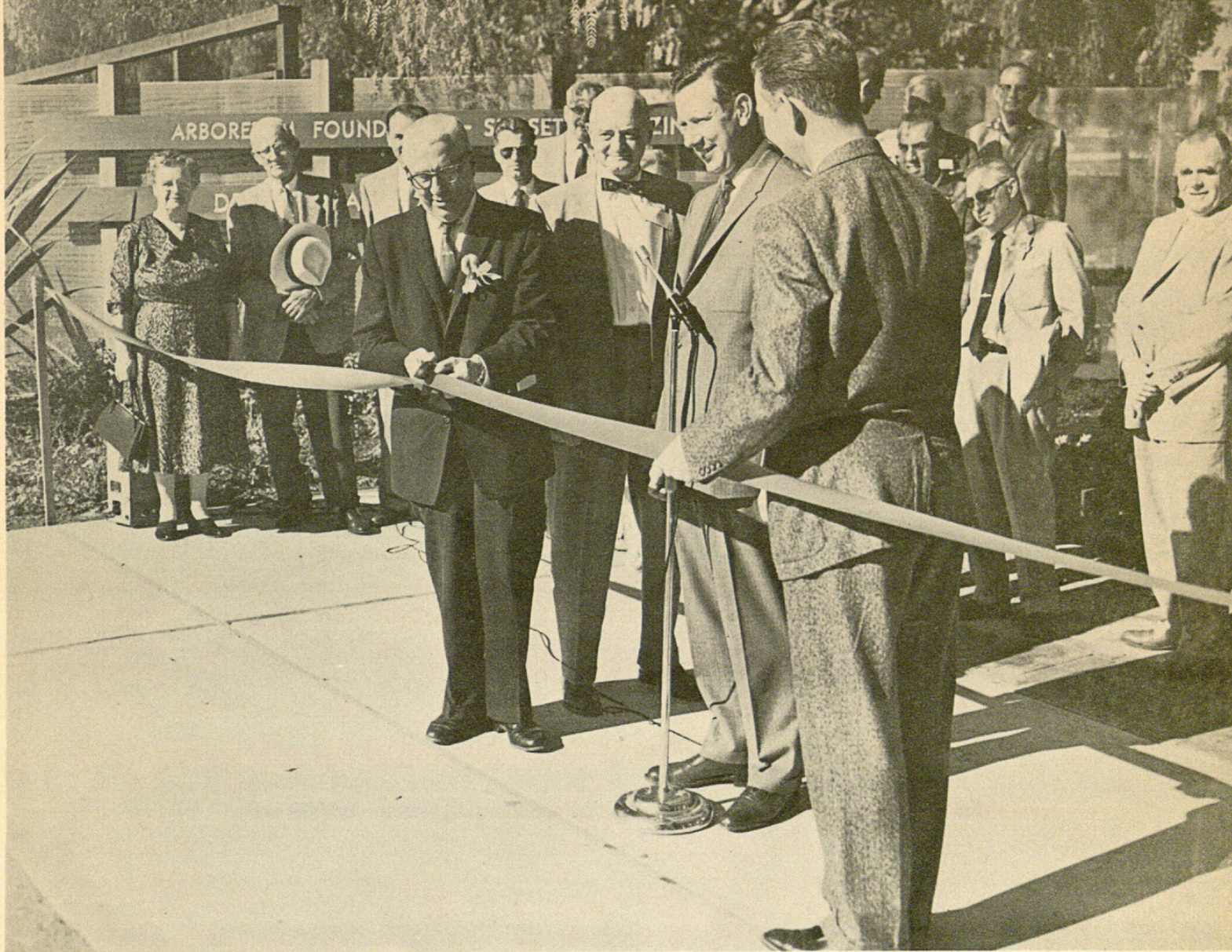
"Formal opening of the four new Demonstration Home Gardens at the Los Angeles State and County Arboretum in Arcadia will be denoted tonight at 5:00 PM when Chairman Burton W. Chace of the Los Angeles County Board of Supervisors will cut the ribbon at the Gardens' entrance."

"The Demonstration Home Gardens are four in number....the words HOME and DEMONSTRATION are keys to how and why the gardens were designed and builtfirst, they were planned for the homes of real people second, they were designed to demonstrate how to use hundreds of new and old building materials as well as new plant introductions and old plants in new settings"

"One should realize that he is seeing a demonstration of many ideas rather than a single approach to garden layout and designfurnishings and plants will be changed by the season, structures may be altered, remodeled, rebuilt --- to try out new ideas and new materials"

"The Gardens are co-sponsored by the California Arboretum Foundation Inc., and Sunset Magazine. The design, planting and construction of these gardens was the responsibility of landscape architects Bettler Baldwin and Owen Peters, and the staffs of the Arboretum, California Arboretum Foundation, Inc., and Sunset Magazine."

"The gardens will be open to the public May 24. Throughout the summer, the gardens will be open Friday, Saturday and Sunday from 9:00 AM to 9:30 PM. Other days of the week, the hours will be from 9:00 AM until dark."



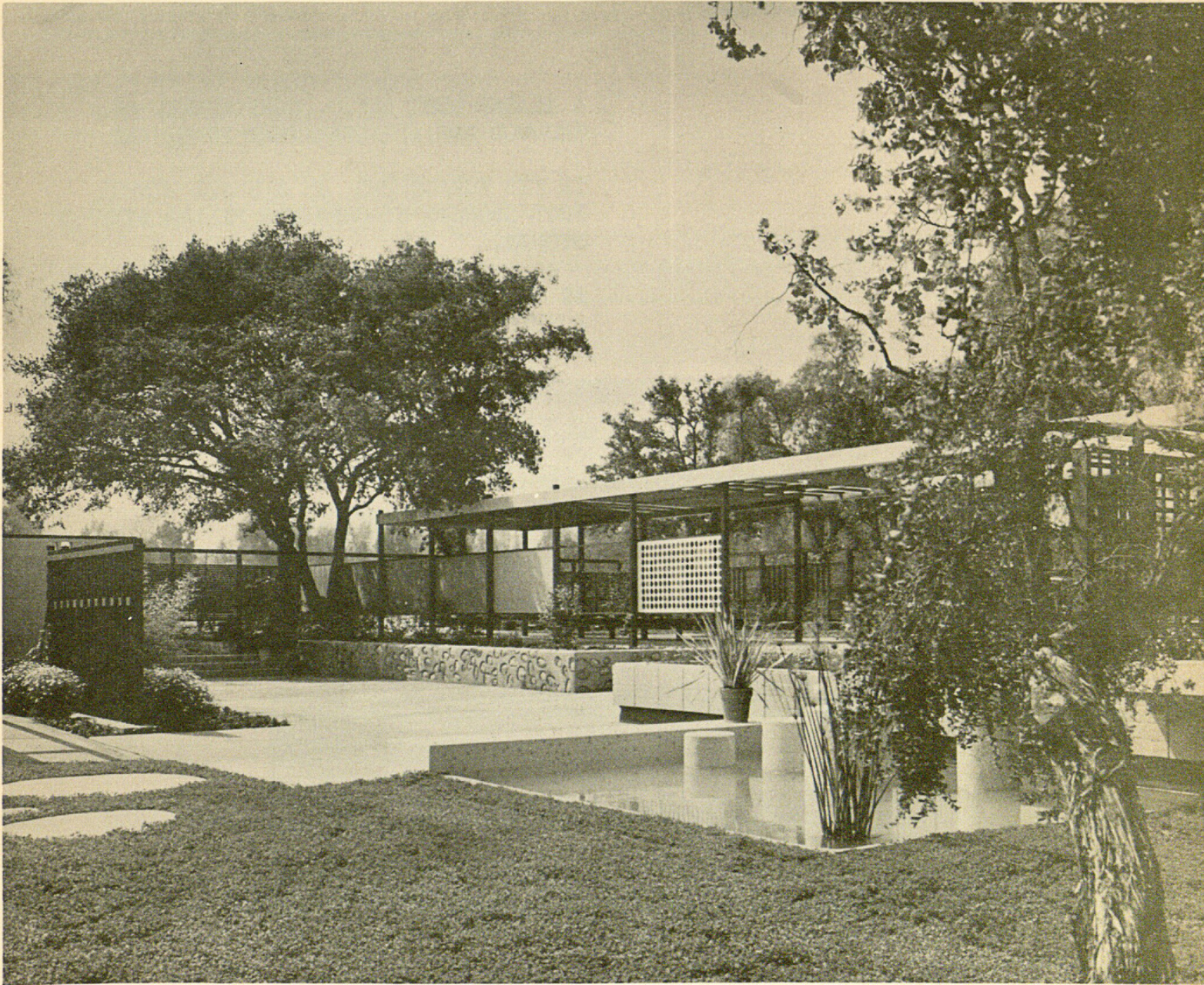
Supervisor Burton W. Chace cuts ribbon with golden pruning shears to officially open the four Demonstration Home Gardens. From left to right: Mr. Chace, Mr. Robert Casamajor, California Arboretum Foundation, Inc., President elect, Mr. Lane, Sunset Magazine and Dr. William S. Stewart, Arboretum Director.

Patio Shade

LOOKING WEST AND TO THE RIGHT FROM THE FIRE PIT, ONE SEES A COVERED WALK-WAY. A DEMONSTRATION OF WOOD, PLASTIC, BAMBOO, REED AND ALUMINUM ROOFING MATERIALS.

PATIO SIDING MATERIALS ARE DISPLAYED BETWEEN THE SUPPORTING POSTS.

THE RETAINING WALL IMMEDIATELY BELOW WAS CONSTRUCTED BY POURING CONCRETE AROUND LARGE, SMOOTH FACED STONES.



Entertainer's Garden

A RAISED DECK PATIO, CONSTRUCTED OF REDWOOD AND APPROPRIATELY FURNISHED.

IN THE FOREGROUND, IS A SMALL MIRROR POOL CROSSED BY CONCRETE PILLAR STEPPING STONES.

AT RIGHT, FLAMES DANCE ON THE WATER FROM SUBMERGED GAS BURNERS.



CIRCULAR STEPPING STONES COLORED WITH
PASTEL LITHOCHROME CEMENT, LEAD TO THE
FIRE PIT OF THE ENTERTAINER'S GARDEN.

IN THE BACKGROUND, CAN BE SEEN A MORE
FORMAL, COVERED PATIO FOR ENTERTAINING.





THE FIRE PIT IN THE ENTERTAINER'S GARDEN.

THE ROCKS ARE OF VOLCANIC ORIGIN AND COMMERCIALIY ARE KNOWN AS "FEATHERROCK". FLOOR OF PIT IS OF PEA GRAVEL. CIRCLES OF CEDAR LOGS SERVE AS RUSTIC SEATS.

BACKGROUND: A DISPLAY OF FENCING IDEAS FOR THE PATIO.

Easy Maintenance

THE EASY MAINTENANCE PATIO GARDEN.

CONCRETE BLOCK STEPS, BRICKED AREA, COLORED SLABS OF TROWELLED CEMENT, RAISED PLANT BEDS OF SUCCULENTS, REDWOOD BENCHES—MAKE THIS A PLEASING AND COLORFUL GARDEN.

THE FAMILY OF THIS GARDEN SPENDS ITS FREE TIME AWAY FROM HOME AND THE USUAL GARDEN WORRIES.



Family Garden

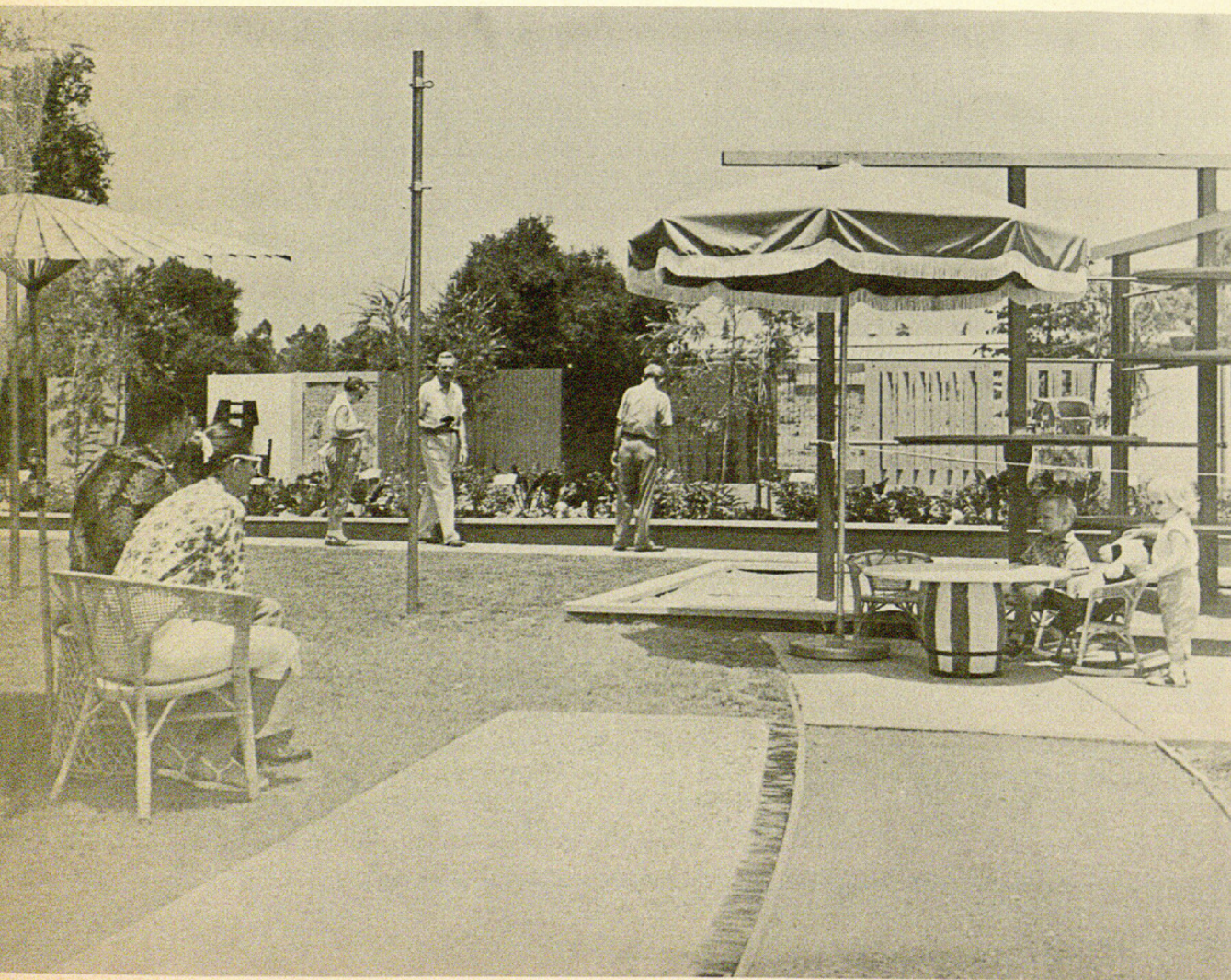
THE TWO CHILDREN SHOULD BE AT HOME IN THIS AREA, FOR IT'S THE PLAY AREA OF THE FAMILY GARDEN. BEHIND THEM IS A "JUNGLE GYM" OF PIPE, WOODEN SUPPORTS AND CIRCULAR WOODEN PLATFORMS.

BEING THE FAMILY GARDEN, SUCH VEGETABLES AS BEETS, CARROTS, CABBAGES, PEPPERS ARE FOUND IN THE RAISED PLANTING AREAS IN THE BACKGROUND.

FENCE PANNELLING SAMPLES OF MANY COLORS, CONSTRUCTION, MATERIALS AND DESIGN BORDER THIS GARDEN.

STEEL POLES FOR TETHER BALL, LAWN TENNIS AND BADMINTON ARE AVAILABLE.

IN THE FOREGROUND ARE SAMPLES OF PAVING FOR PATIO AND WALKS.



Plant Collector

FROM THE OPEN GARDENING AREA OF THE PLANT COLLECTOR'S GARDEN, ONE LOOKS TOWARD A NEW IDEA IN GREENHOUSE - POTTING SHED - TOOL STORAGE BUILDING. SOLD AS A "KIT" TYPE UNIT, THIS STRUCTURE IS INTENDED FOR CONSTRUCTION BY THE HOME OWNER. A SHEET PLASTIC ROOF, REPLACES CONVENTIONAL GLASS.

AT THE EXTREME END OF THE GREENHOUSE, CAN BE SEEN THE ATTACHED LATHHOUSE.





1958. "Demonstration home garden." *LASCA miscellanea* 1958, 5–14.

View This Item Online: <https://www.biodiversitylibrary.org/item/138033>

Permalink: <https://www.biodiversitylibrary.org/partpdf/147081>

Holding Institution

The Arboretum Library at the Los Angeles County Arboretum and Botanic Garden

Sponsored by

Good Family Foundation

Copyright & Reuse

Copyright Status: In copyright. Digitized with the permission of the rights holder.

License: <http://creativecommons.org/licenses/by-nc-sa/3.0/>

Rights: <https://biodiversitylibrary.org/permissions>

This document was created from content at the **Biodiversity Heritage Library**, the world's largest open access digital library for biodiversity literature and archives. Visit BHL at <https://www.biodiversitylibrary.org>.