

the State Timber Board. The number of elephants captured during the last three years 1952-53 to 1954-55 is as follows:

Number captured	Number died, released or escaped	Balance
129	28	101

Total number of elephants killed from 1952-53 to 1954-55 is 9.

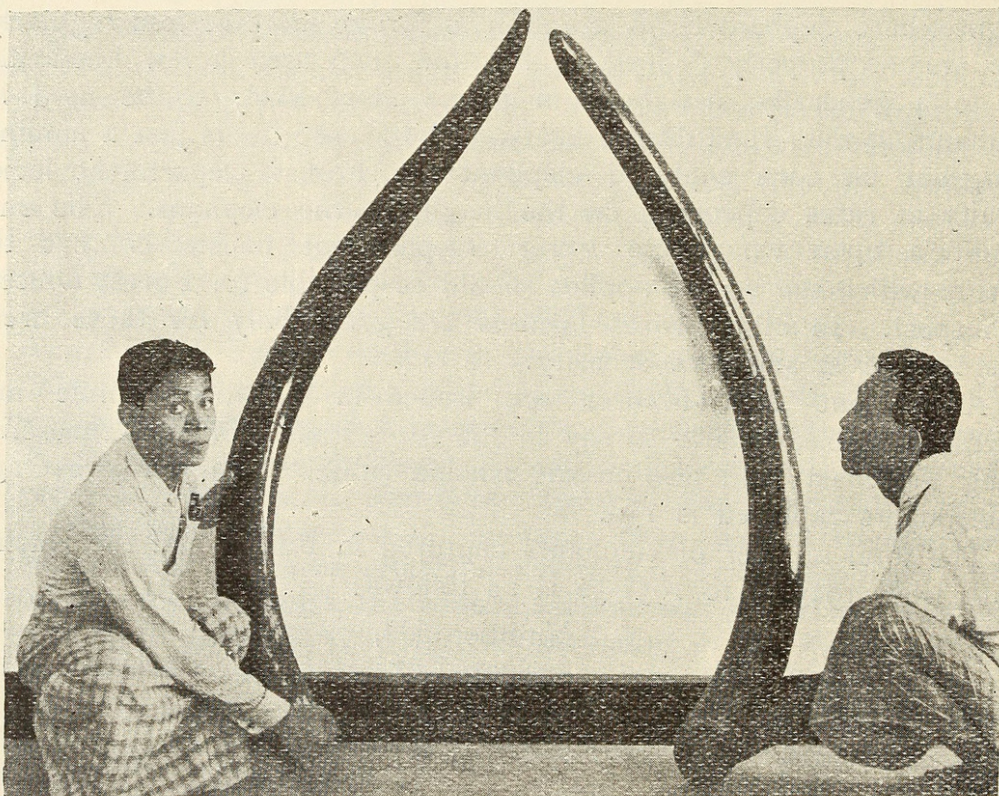
25 INYA MYAING ROAD,
UNIVERSITY P.O.,
RANGOON,
August 23, 1956.

TUN YIN,
B.C.S. (Retd.)

5. A LARGE PAIR OF ELEPHANT'S TUSKS FROM BURMA

(With a photo)

In the Society's *Journal* 37: 468, J. K. Stanford has given a description of a large pair of elephant's tusks which he saw at Lonkhin, in the house of Kanshi Duwa. He did not get the opportunity to weigh the tusks then.



This pair was brought down to Rangoon recently and were found to weigh 180 lb., when weighed at the air strip, Myitkyina.

The measurements and weight of these tusks therefore are:

Length	Girth	Weight	Remarks
R-6'-5½	17½"	180 lb.	Owner—Kanshi Duwa.
L-6'-7½	17"		

For comparison, measurements and weights of some other large pairs of Burmese tusks are given below.

Extracts from Appendix I—Burma Game Manual 1929.

Length	Girth	Weight	Remarks
R-8'-9"	Government House
L-8'-6"	Rangoon (R. W.)
R-7'-3"	17½"	102 lb.	The tusks of the sacred white elephant from Mandalay Palace. Owner—The Marquis of Waterloo. (R.W.)
L-7'-3¼"	17"	97½ lb.	
R7'-9½"	17½"	72 lb.	Shot by J. N. Clough. Kyaikto District 1896 (I.F.S.B.)
L-8'-6"	17"	74 lb.	
R-6'-8"	18¼"	84 lb.	Owner—H. Shaw Dum. (R.W.)
L-6'-5"	18¼"	82 lb.	
R-6'-11"	15½" }	106 lb.	Owner—Gordon Smith (R.W.)
L-6'-6"	15½" }		
R-6'7"	17" }	110 lb.	Shot by H. E. Flint. Mogok Forest Division
L-5'-9"	17" }		
R6'-2½"	17¼"	...	Shot by A. Hazlehood. Basein Forest Division.
L-6'-1¼"	17½"	...	

Extract from *The Burmese Forester*. Vol. V, No. 2.—December 1955. (Page 134)

Length	Girth	Weight	Remarks
R-7'-11½"	16½" }	138.6 lb.	A big tusker shot at Hnokeho, Bhamo Division in 1936 by U Su.
L-7'-11"	16½" }		

25, INYA MYAING ROAD,
UNIVERSITY P.O.,
RANGOON,
August 23, 1956.

TUN YIN,
B.C.S. (Retd.)

6. ALBINO ELEPHANTS

Early in the present century an albino elephant calf was captured by the Government kheddah department in the Katha Forest Division. The calf was presented to the Trustees of the Shwe Dagon Pagoda, but died shortly after arrival at Rangoon as a result of over-feeding by pilgrims.

Later in the century, one was captured in the Toungoo Forest Division. The owner Saw Durmay Po Min, took the albino elephant along with one black elephant for exhibition in Europe and America. On the return journey, the elephant died at



Tun Yin, U. 1956. "A Large Pair of Elephant's Tusks from Burma." *The journal of the Bombay Natural History Society* 54, 178–179.

View This Item Online: <https://www.biodiversitylibrary.org/item/186985>

Permalink: <https://www.biodiversitylibrary.org/partpdf/153318>

Holding Institution

Smithsonian Libraries and Archives

Sponsored by

Biodiversity Heritage Library

Copyright & Reuse

Copyright Status: In Copyright. Digitized with the permission of the rights holder

License: <http://creativecommons.org/licenses/by-nc/3.0/>

Rights: <https://www.biodiversitylibrary.org/permissions/>

This document was created from content at the **Biodiversity Heritage Library**, the world's largest open access digital library for biodiversity literature and archives. Visit BHL at <https://www.biodiversitylibrary.org>.