

NEW DESCRIPTIONS

TAXONOMIC STUDIES ON MARINE OSTRACODA FROM THE EAST COAST OF INDIA. FAMILY: CYPRIDIDAE MARTIN, 1940¹

C. ANNAPURNA AND D. V. RAMA SARMA²

(With three plates)

INTRODUCTION

In an investigation on the taxonomy and ecology of benthic ostracods, 40 species belonging to 27 genera and 14 families were identified from the marginal marine/estuarine environments, namely Bimili backwaters (17° 54' N; 83° 28' E), Balacheruvu tidal stream (17° 39' N; 83° 15' E), and Vasishta Godavari estuary (16° 18' N; 81° 42' E). (Annapurna 1978).

Among the members of the family Cyprididae Martin, 1940, *Phlyctenophora indica* is new to science, *P. zealandica* (Brady, 1880) is recorded for the first time from Indian waters.

Family: CYPRIDIDAE Martin, 1940
Subfamily: PARACYPRIDINAE Sars, 1923
Genus: *Phlyctenophora* Brady, 1880

KEY FOR IDENTIFICATION TO SPECIES OF *Phlyctenophora*:

1. Carapace smooth 3
2. Carapace sculptured with a few pits and dark brown patches in live condition 6
3. Antero-dorsal pronounced
..... *Phlyctenophora bhatiai*

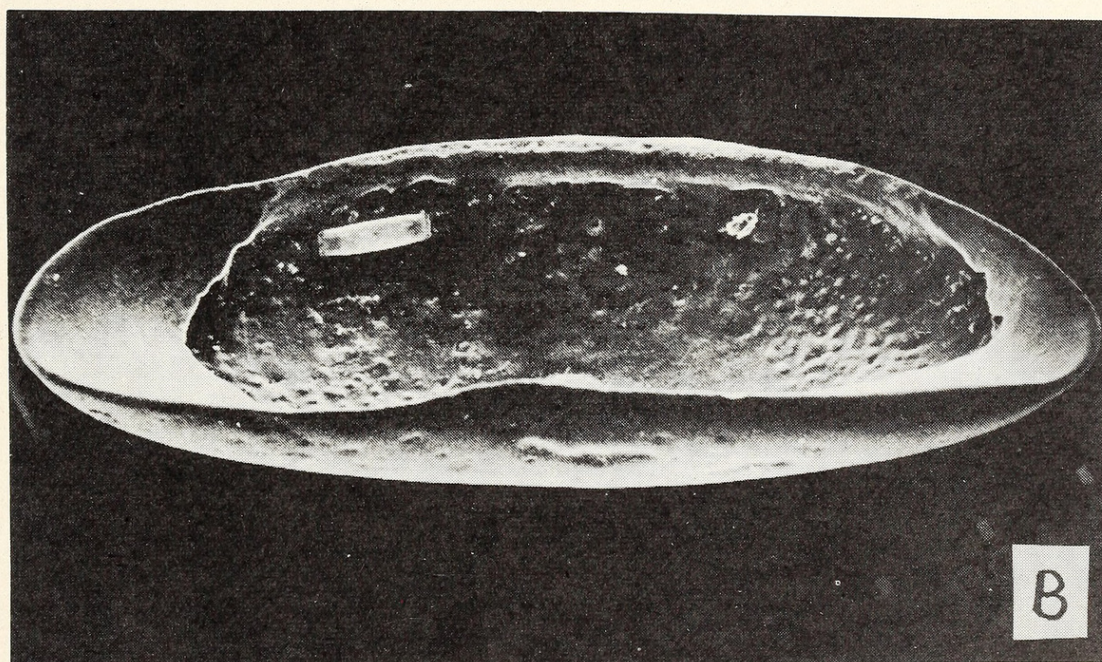
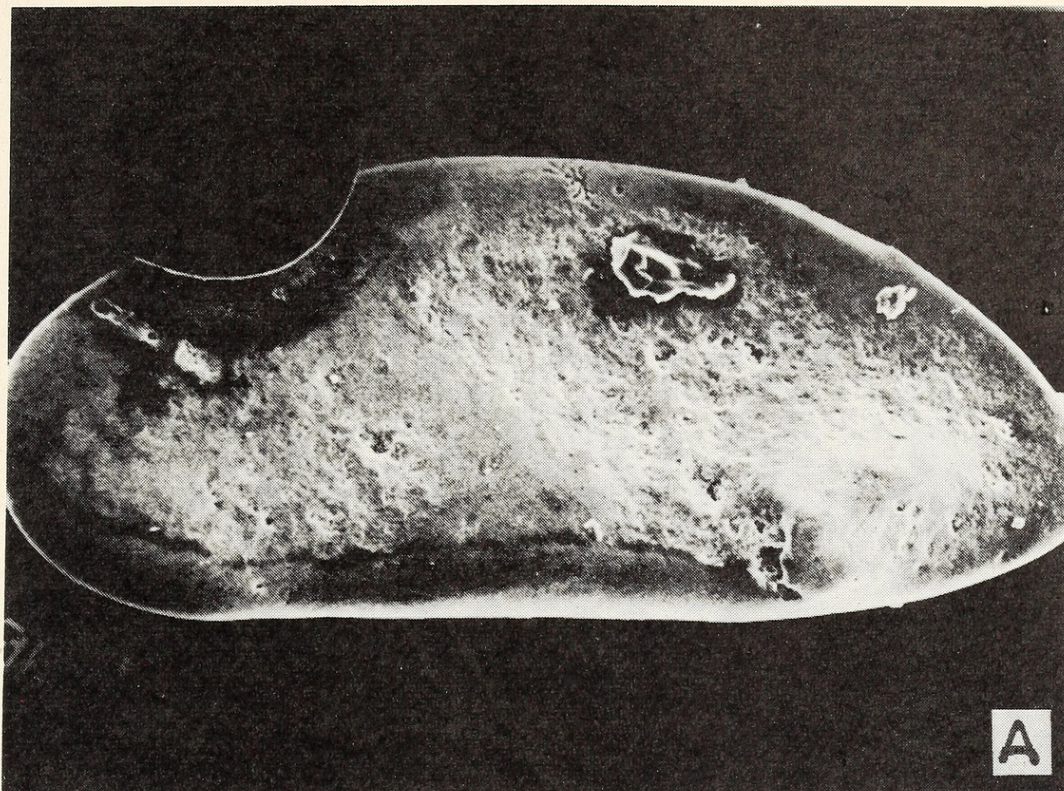
¹ Accepted December 1985.

² Department of Zoology, Andhra University, Waltair-530 003.

4. Antero-dorsal not pronounced 5
5. Marginal pore canals conspicuously branching *P. zealandica*
6. Bifurcate branching in marginal pore canals *P. indica*

***Phlyctenophora zealandica* (Brady, 1880)** (Pl. 1, Fig. A; Pl. 2, Figs. 1-8)

Carapace elongate, moderately compressed laterally. Greatest height in the middle and equal to less than half the length. Anterior end broadly rounded, posterior end narrow and ventrally sub-angular. Dorsal margin arched, ventral margin somewhat sinuate in the middle, carapace smooth, valves strongly calcified. Hinge adont type. The dorsal margin of the right valve fits into a shallow open groove along the dorsal margin of the larger left valve. Inner lamella widest anteriorly and antero-ventrally, narrowing towards the posterior end. Anterior vestibulum present but not conspicuously wide. Posterior vestibulum generally slightly wider. Selvage peripheral, weakly developed. Marginal pore canals many, conspicuously branched, especially anteriorly and antero-ventrally. Normal pores numerous, small pores open and scattered. Central muscle scars, adductor muscle scars group of six, four in the anterior vertical row and two in the posterior and two anteroventral mandibular scars. Eye spot absent, left valve larger than the right. Sexual dimorphism not apparent.



A. *Phlyctenophora zealandica* — Exterior view of carapace — 100x.
B. *P. indica* — Interior view of carapace — 116x.



Annapurna, C and Rama Sarma, D V. 1988. "Taxonomic studies on marine Ostracoda from the east coast of India. Family: Cyprididae Martin, 1940." *The journal of the Bombay Natural History Society* 85, 364–366.

View This Item Online: <https://www.biodiversitylibrary.org/item/191948>

Permalink: <https://www.biodiversitylibrary.org/partpdf/157241>

Holding Institution

Smithsonian Libraries and Archives

Sponsored by

Biodiversity Heritage Library

Copyright & Reuse

Copyright Status: In Copyright. Digitized with the permission of the rights holder

License: <http://creativecommons.org/licenses/by-nc/3.0/>

Rights: <https://www.biodiversitylibrary.org/permissions/>

This document was created from content at the **Biodiversity Heritage Library**, the world's largest open access digital library for biodiversity literature and archives. Visit BHL at <https://www.biodiversitylibrary.org>.