

---

## A New Species of *Holcoglossum* (Orchidaceae) from China

Jin Xiaohua, Chen Singchi, and Qin Haining

Herbarium (PE), Institute of Botany of Chinese Academy of Sciences, Beijing 100093, China. xiaohuajin@mail.kib.ac.cn; hainingqin@ns.ibcas.ac.cn

Guanghua Zhu

Missouri Botanical Garden, P.O. Box 299, St. Louis, Missouri 63166, U.S.A.  
guanghua.zhu@mobot.org

Gloria Siu Laiping

Kadoorie Farm and Botanic Garden, Hong Kong. siulpcon@kfbg.org.hk

---

**ABSTRACT.** *Holcoglossum weixiense* X. H. Jin & S. C. Chen, a new species of Orchidaceae from Yunnan, China, is described and illustrated. It resembles morphologically *H. sinicum* Christenson and *H. flavescens*, but it can be distinguished from the former by having a transverse callus on the lip, a papillose spur, and a semi-orbicular mid-lobe, and from the latter by its pending habit, longer and semiterete leaves (more than 10 cm), and the semi-orbicular mid-lobe.

**Key words:** China, *Holcoglossum*, Orchidaceae.

*Holcoglossum* Schlechter (Orchidaceae) is distributed mainly in southwestern China, with a few species, e.g., *H. subulifolium* (Reichenbach f.) Christenson, extending to Laos, Thailand, Vietnam, and Malaysia. Because of its pollinia, three-lobed lip, and the short bifid rostellum, this genus is similar in floral structure to *Aerides*, *Papilionanthe*, and *Vanda*, from which several species have previously been transferred, e.g., *H. rupestre* (Handel-Mazzetti) Garay (1972), *H. flavescens* (Schlechter) Tsi (1982), and *H. subulifolium* (Reichenbach f.) Christenson (1987). Although Seidenfaden (1983) stated that it was difficult to define *Holcoglossum*, the new species somewhat coincides with Garay's (1972: 181) delimitation of the genus: "... characterized by the short, footless column with prominent wings. Clinandrium deeply cleft in front; rostellum short, bifid. Pollinia 2, notched, on linear, tapering stipes. Lip sessile with a slender, arcuate spur. Stem rather short, completely enclosed by distichously arranged leaf-sheaths. Leaves articulate, triquetrous or terete."

The new species was collected from the Langcan River in northwestern Yunnan. It is somewhat related to *Holcoglossum sinicum* Christenson and *H. flavescens* (Schlechter) Tsi, but is distinguished from

the former by its semi-orbicular mid-lobe, papillose spur, notable callus on the labellum, and from the latter by its pending habit, longer and semiterete leaves (more than 10 cm), and the semi-orbicular mid-lobe.

***Holcoglossum weixiense*** X. H. Jin & S. C. Chen, sp. nov. TYPE: China. Yunnan: Weixi, Langcan River, 21 May 2002 (fl), *H. K. Kadoorie Program Team 3490* (holotype, PE; isotypes [spirit], KUN, MO, PE). Figure 1.

Habitu *Holcoglossum sinicum* subsimile, sed calcari intus papillato, inflorescentia caule longiore, labello medio callo notabili instructo bene differt.

Epiphytic plant, pendulous; root terete, thick, white; stem short, 1–2 cm long, enclosed by the leaf-sheathing bases. Leaves 20–30 × 1.5–2.5 cm, coriaceous, semiterete, channeled, articulate at base. Inflorescence lateral, erect, 3–4 cm long, 2- to 4-flowered, exceeding the stem, bracts ovate, 0.7 cm long. Flowers spreading, opening fully, white, tinged with pink; pedicel with ovary 2 cm long; dorsal sepal erect, ovate, 1 × 0.7 cm, 3-veined; lateral sepals oblique at base, seculate, 1.5 × 0.9 cm wide, 4-veined; petals spatulate, 1.1 × 0.6 cm, 3-veined; lip adnate to the column foot, fixed; three-lobed; lateral lobes triangular, erect, with purple streaks on the inner surface; mid-lobe semi-orbicular, entire, 1 × 1.2 cm, with a transverse callus at base toward the entrance of the spur; spur funnel-shaped, papillose, 0.7 cm long; column 0.4 cm long, column foot 0.1 cm long; pollinia 2, notched; stipes obcuneate, 3 mm long. Capsule unknown.

**Distribution.** China: Yunnan, Weixi, Bilou Snow Mountain, at 2300 to 2900 m, in evergreen forest.



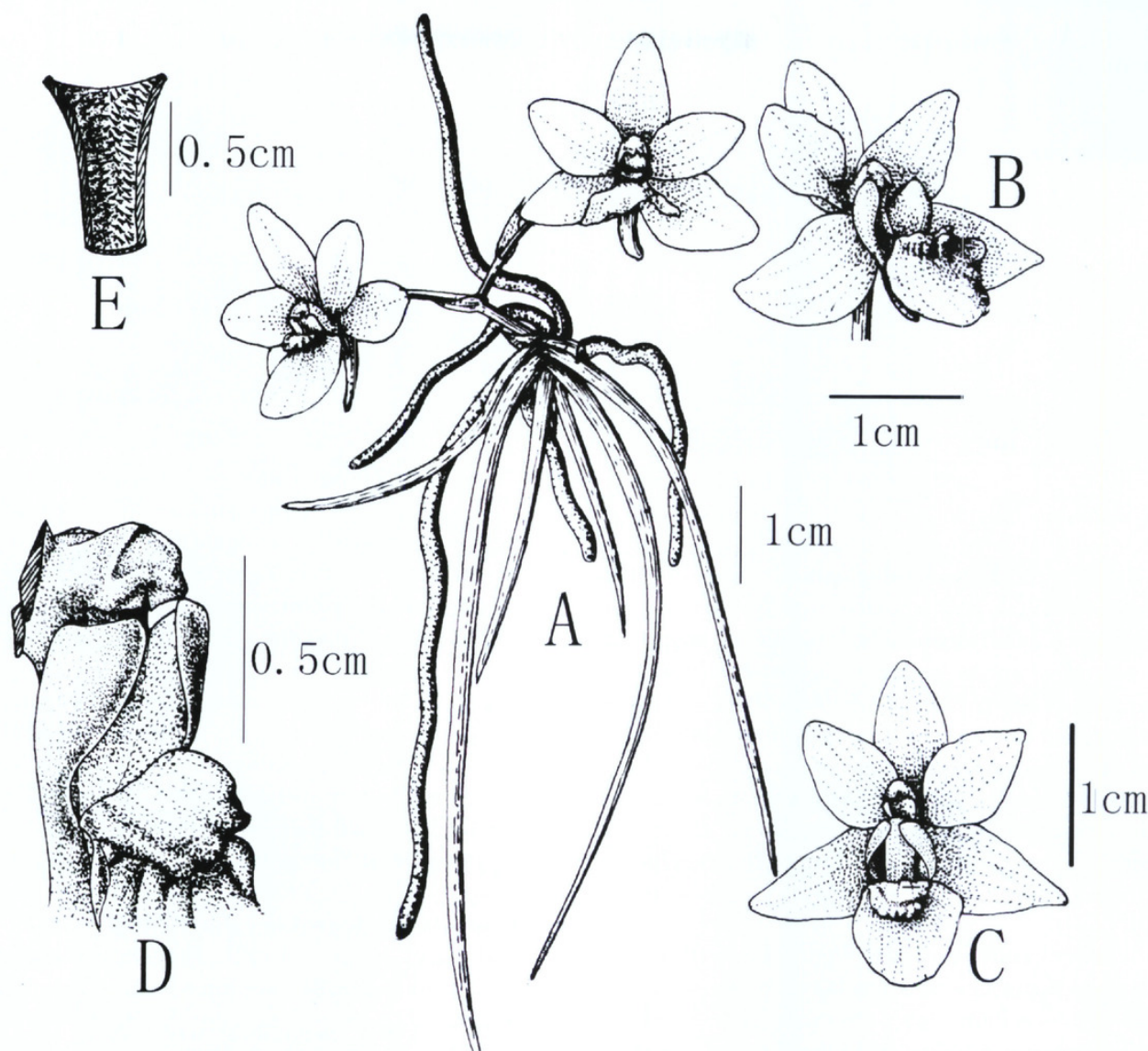


Figure 1. *Holcoglossum weixiense* X. H. Jin & S. C. Chen. —A. Habit and inflorescence. —B. Lateral view of flower. —C. Front view of flower. —D. Lateral view of lateral lobes. —E. Inner wall of spur. Drawn from the type specimen (Hong Kong Kadoorie Program Team 3490) by Yingbao Sun.

*Paratypes.* CHINA. **Yunnan:** Langan River, 20 July 2001, Hong Kong Kadoorie Program Team 1166 (KUN, PE), 21 May 2002 (fl), Hong Kong Kadoorie Program Team 3486 (KUN), 3497 (PE).

*Acknowledgments.* We are indebted to Wen-tasi Wang for his critical reading of the manuscript, to the Kadoorie Farm and Botanic Garden, Hong Kong, for its financial support, and to the CITES officials of China for their kind help. We also thank Yinbao Sun for his excellent illustration.

Literature Cited

Christenson, E. A. 1987. An intrageneric classification of *Holcoglossum* Schltr. (Orchidaceae: Sarcanthinae) with a key to the genera of the *Aerides-Vanda* alliance. Notes Roy. Bot. Gard. Edinburgh 44: 249–256.  
Garay, L. A. 1972. On the systematics of the monopodial orchids I. Bot. Mus. Leaflet 23(4): 149–212.  
Seidenfaden, G. 1988. Orchid genera in Thailand XIV. Fifty-nine genera. Opera Bot. 95: 304–308.  
Tsi, Z. H. 1982. A study of the genus *Holcoglossum* of Orchidaceae. Acta Phytotax. Sin. 20(4): 439–444.



Jin, Xiaohua et al. 2004. "A New Species of *Holcoglossum* (Orchidaceae) from China." *Novon a journal of botanical nomenclature from the Missouri Botanical Garden* 14, 178–179.

**View This Item Online:** <https://www.biodiversitylibrary.org/item/14674>

**Permalink:** <https://www.biodiversitylibrary.org/partpdf/172154>

**Holding Institution**

Missouri Botanical Garden, Peter H. Raven Library

**Sponsored by**

Missouri Botanical Garden

**Copyright & Reuse**

Copyright Status: In copyright. Digitized with the permission of the rights holder.

License: <http://creativecommons.org/licenses/by-nc-sa/3.0/>

Rights: <https://biodiversitylibrary.org/permissions>

This document was created from content at the **Biodiversity Heritage Library**, the world's largest open access digital library for biodiversity literature and archives. Visit BHL at <https://www.biodiversitylibrary.org>.