

Agroeca dentigera and *Entelecara omissa* (Araneae: Liocranidae, Linyphiidae), found in Sweden

Lars J. Jonsson

Abstract: The rare spider species *Agroeca dentigera* Kulczyński, 1913 (Liocranidae) and *Entelecara omissa* O. P.-Cambridge, 1902 (Linyphiidae), have been found in a small coastal freshwater fen in Lomma (55°42'N 13°4'E), north of Malmö in Scania in southernmost Sweden. *A. dentigera* was also found on a salt water meadow south of Malmö. Both species have been found only in a few wet localities in Europe. *Entelecara depilata* Tullgren, 1955, is a junior synonym of *Entelecara omissa* O. P.-Cambridge, 1902, **new synonymy**.

key words: *Entelecara depilata*, faunistics, fen, new record, new synonymy

In a study of the spider fauna, 1990-1992, of a small open freshwater fen on the coast in Habo, Lomma, Scania, southernmost Sweden, 55°42'N 13°4'E, the rare spider species *Agroeca dentigera* Kulczyński, 1913 and *Entelecara omissa* O. P.-Cambridge, 1902 were found.

Agroeca dentigera (Liocranidae)

A. dentigera Kulczyński, 1913 was found on and in tussocks of *Carex elata* in a small semi-open mesotrophic coastal marsh surrounded by alder trees. In pitfall traps one female and one juvenile were trapped (26 March - 5 Apr. 1991), one juvenile (14 May - 3 June 1991), one male (7 - 30 Nov. 1991) the top of tussocks. Two males were found in the middle of a tussock that was cut in small pieces (27 Oct. 1991). *Agroeca dentigera* has also been found previously at another locality on the coast of Scania. S. Almquist (pers. com.) found one female in a drift of *Phragmites australis* on a coastal pasture used by horses south of Klagshamn (55°30'N 12°55'E), 3 Sept. 1976. The female was found in the area between the pasture and a belt of *Phragmites* in sea water.

Agroeca dentigera has been reported from a few places in Germany (BRAUN 1967, WUNDERLICH 1975, PLATEN et al. 1999), Belgium (JOCQUÉ 1977, JANSSEN 1991), Romania (OLTEAN 1973, STERGHIU 1985), Poland (KUPRYJANOWICZ 1997), the Netherlands (v. HELSDINGEN 1999), Wales (FELTON et al. 2004), Finland, Lithuania (KOPONEN et al. 2000, RĚLYS & DAPKUS 2002,

RĚLYS et al. 2002), Belarus (MIKHAILOV pers. comm.), Ukraine (MIKHAILOV 1997) and in Russia (KULCZYŃSKI 1913), eastwards to the Urals (ESYUNIN & EFIMIK 1996).

The female originally described by KULCZYŃSKI, 1913, has later been figured by several arachnologists (BRAUN 1967, OLTEAN 1973, JOCQUÉ 1977, STERGHIU 1985, ROBERTS 1998 and FELTON et al. 2004). The drawing of the heart-shaped epigyne

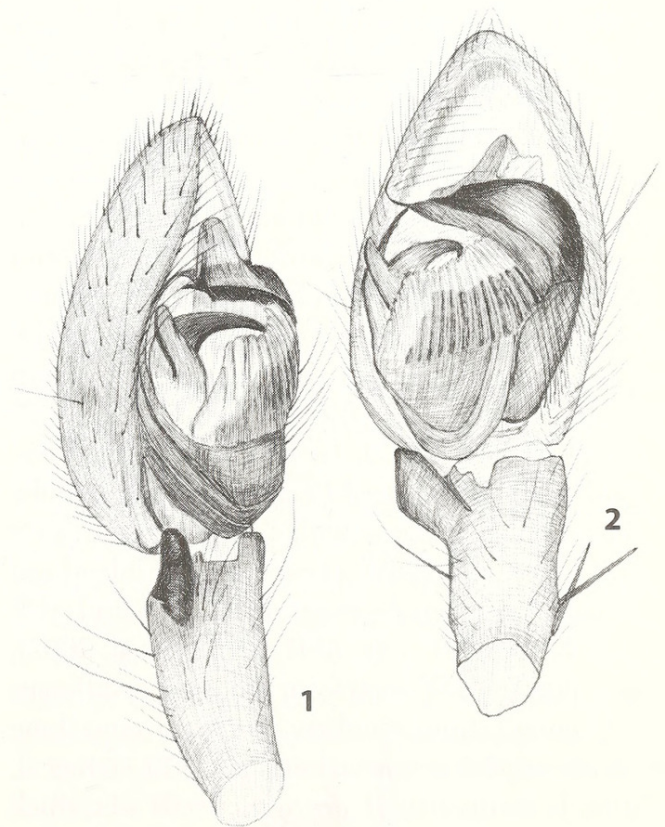
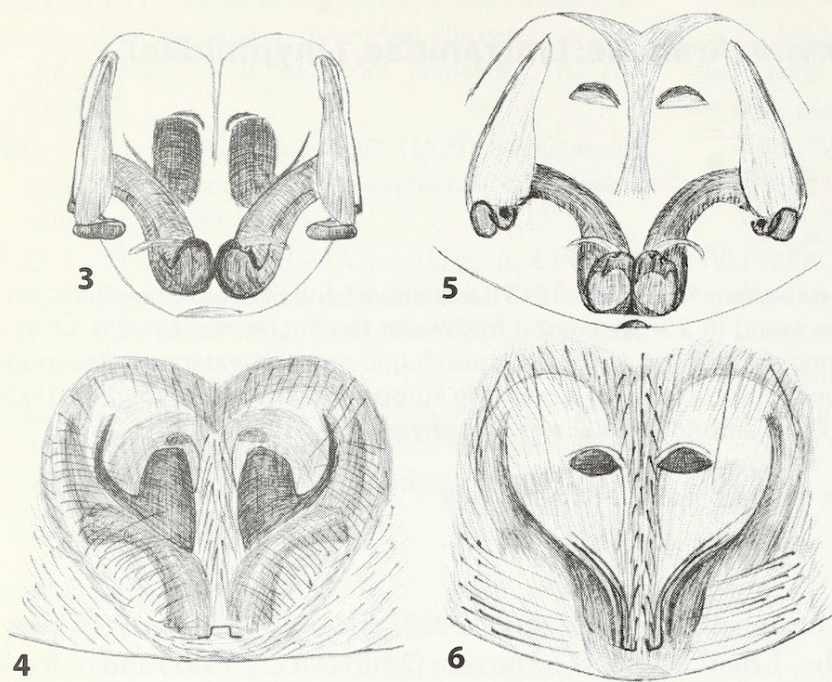


Fig. 1-2: *Agroeca dentigera* Kulczyński, left male pedipalp: 1- ventral view, 2- retrolateral view. Drawings by Sven Almquist.



Figs. 3-6: *Agroeca dentigera* Kulczyński, female epigyne: 3- dorsal view, newly moulted female, 4- ventral view, newly moulted female, 5- dorsal view, old female, 6- ventral view, old female. Drawings by Sven Almquist.

by GRIMM (1986) and the copy in HEIMER & NENTWIG (1991) is somewhat atypical. The male has been figured by WUNDERLICH (1975), JOCQUÉ (1977), ROBERTS (1998) and FELTON et al. (2004). Figs. 1-2 show the pedipalp of a male and figs. 3-6 the epigyne of females from Sweden.

WUNDERLICH (1975) found *A. dentigera* in a marsh with *Carex lasiocarpa* surrounded by an alder fen. JOCQUÉ (1977) found it among heather, *Calluna vulgaris*, on dry ground near water and among the grass *Molinia caerulea* on wet ground. According to him *A. dentigera* needs "the vicinity of wet acid soils". It has also been reported from mosses of *Sphagnum* (BRAUN 1967, STERGHIU 1985, JANSSEN 1991). In Romania it has been found in a floating belt of *Phragmites* in the Danube delta and in association with *Sphagnum* (OLTEAN 1973, STERGHIU 1985). The records in Finland and Lithuania are from peatbogs, both open and with pines (KOPONEN et al. 2001, RĚLYS et al. 2002). The report from Wales is from a somewhat different environment, from a hollow in a fixed sand dune with *Ammophila arenaria* dominant (FELTON et al. 2004). It seems that *A. dentigera* needs wet, thick heaps of vegetation, e.g. tussocks or mosses. It is obviously hygrophilous. Probably it spends the day in tussocks, mosses or other wet heaps and wanders,

at least some of the time, on the surface during the night. The species is active in autumn and spring, but can also fall into pitfall traps during the winter. It is red-listed as vulnerable in Sweden (GÄRDENFORS 2005).

Entelecara omissa (Linyphiidae)

Entelecara omissa was described by PICKARD-CAMBRIDGE (1902), but was named without any detailed description as a nomen nudum two years earlier (PICKARD-CAMBRIDGE 1900). The first drawings of the male palp were published later (PICKARD-CAMBRIDGE 1903), although the drawing of the female's epigyne was of *Entelecara errata* (O. P.-Cambridge, 1913) (see PICKARD-CAMBRIDGE 1913). O. P.-Cambridge never made any drawings of the female of *E. omissa*. It has been reported from mesotrophic fens in England and from Ireland (RUSSEL-SMITH 2002), from a fen area in Belgium (DECLEER 1992), from fens in Poland (KUPRYJANOWICZ 1997), from Ukraine (K. Mikhailov pers. com.), from a reed swamp in the Czech Republic (BUCHAR & RŮŽIČKA 2002), the Netherlands (van HELSDINGEN 1999) and from an ombrotrophic mire in Germany (SCHIKORA 1994) and also from two other localities in Germany (STAUDT 2004). The latter two records in STAUDT (2004) are probably misidentifications and need confirmation (Blick, pers. com.). In England the species is found among tussocks and litter, cut sedge, reed-beds and similar habitats at ground level in fens (RUSSEL-SMITH 2002).

In the same fen in Lomma as *Agroeca dentigera* a female of *Entelecara omissa* was found (7 Nov. 1990). *E. omissa* has also been found at three different lakes near Stockholm as reported by TULLGREN (1955) as a new species: *Entelecara depilata*. By comparing the drawings and description by TULLGREN (1955) and by checking the types in the NRM in Stockholm with the drawings made by LOCKET & MILLIDGE (1953), ROBERTS (1987) and TAZOE (1993), it is obvious that *Entelecara depilata* Tullgren is a junior synonym of *Entelecara omissa* O. P.-Cambridge, new synonym. In Sweden two females of *Entelecara depilata* have also been reported from the open mire

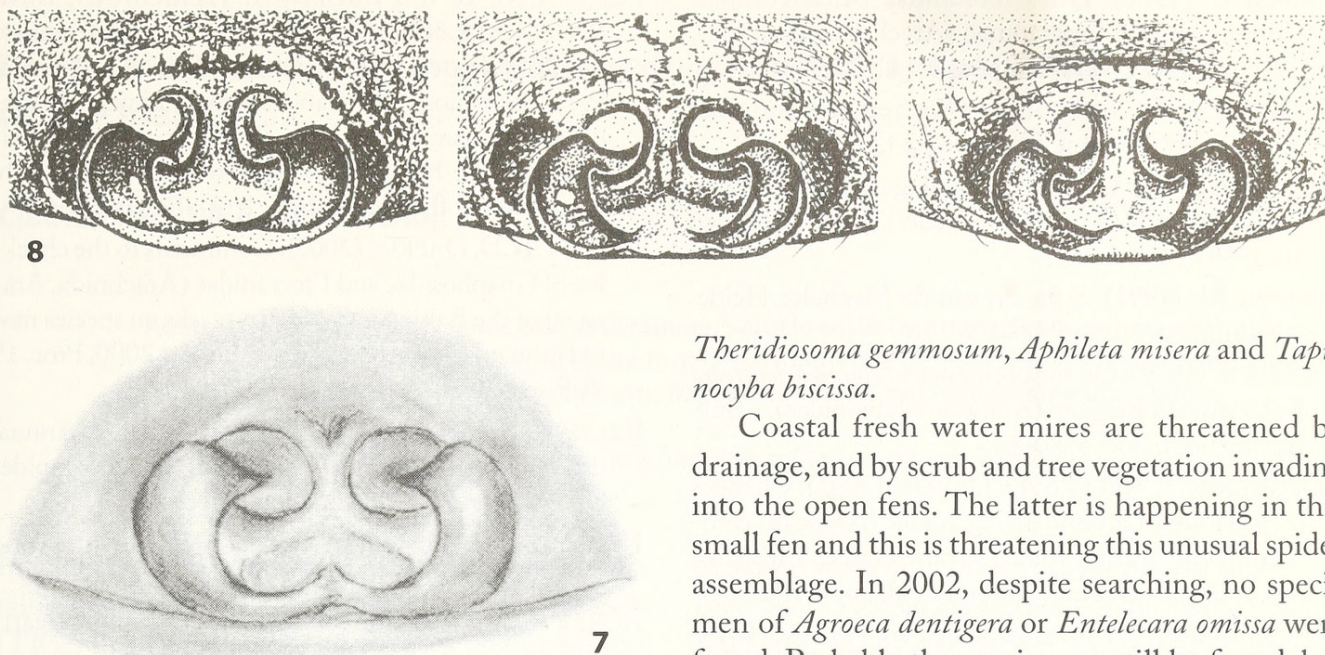


Fig. 7-8: *Entelecara omissa* O. P.-Cambridge, female epigynes: 7- from TULLGREN (1955: Taf. IV, Fig. 8a, sub *E. depilata*), 8- from ROBERTS (1987: p. 41, fig. 11f).

Knisa myr (ALMQUIST 1984). Those females have been checked and are *E. omissa*. *Entelecara depilata* has also been reported from Estonia (VILBASTE 1987) and is probably also *E. omissa*.

The syntypes of *E. depilata* in the NRM are small, total length approx. 1,5 mm, cephalothorax approx. 0,65 mm. They are rather dark, with yellowish legs bearing dark annulation on the coxae. They have trichobothria on metatarsus I-III, but no trichobothrium on leg IV. Anterior median eyes slightly larger than anterior lateral eyes (Tullgren, 1955; pers. obs.). Trichobothria on metatarsus I approx. 0,45. This is in accordance with the descriptions of *Entelecara omissa* by LOCKET & MILLIDGE (1953) and ROBERTS (1987). Fig. 7 shows the drawing of the epigyne of *E. depilata* made by TULLGREN (1955) and fig. 8 shows the epigynes by ROBERTS (1987).

The fen and its spiders

In the fen 83 species were found and 1025 specimen collected. The most common spider species on the tussocks of *Carex elata* in Lomma were: *Pardosa amentata*, *Pardosa prativaga*, *Pirata piraticus*, *Trochosa spinipalpis*, *Pachygnatha clercki*, *Gongylidiellum murcidum*, *Erigonella ignobilis*, *Walckenaeria unicornis* and *Zora spinimana*. Rare species found in the fen include *Hypomma fulvum*, *Lophomma punctatum*,

Theridiosoma gemmosum, *Aphileta misera* and *Tapiocyba biccissa*.

Coastal fresh water mires are threatened by drainage, and by scrub and tree vegetation invading into the open fens. The latter is happening in this small fen and this is threatening this unusual spider assemblage. In 2002, despite searching, no specimen of *Agroeca dentigera* or *Entelecara omissa* were found. Probably the species can still be found, but in small numbers. The fen is subject to a drainage proposal.

Acknowledgements

Thanks to Sven Almquist for information and loan of specimen and for allowing to use his drawings on *A. dentigera*, to Michael J. Roberts for allowing to use his drawings on *E. omissa*, to Theo Blick, Jason Dunlop, Oliver-D. Finch and Kirill Mikhailov for valuable information and suggestions, and to Torbjörn Kronstedt for loan of specimen from NRM.

References

- ALMQUIST S. (1984): Samhällen av spindlar och locke-spindlar på Knisa myr. – Ent. Tidskr. 105: 143-150
- BRAUN R. (1967): *Agroeca dentigera* Kulczynski 1913 eine für Deutschland neue Clubionidae. – Senckenb. biol. 48: 179-181
- BUCHAR J. & V. RŮŽIČKA (2002): Catalogue of Spiders of the Czech Republic. Peres Publ., Praha. 351 pp.
- DECLER K. (1992): First record of the Linyphiid spider *Entelecara omissa* (O. P. Cambridge) on the European Mainland. – Newsl. Br. archnol. Soc. 64: 6.
- ESYUNIN S.L. & V.E. EFIMIK (1996): Catalogue of the spiders of the Urals. KMK Scientific Press, Moscow. 229 pp.
- FELTON C., S. JUDD & P. MERRETT (2004): *Agroeca dentigera* Kulczyński, 1913, a liocranid spider new to Britain (Araneae, Liocranidae). – Bull. Br. arachnol. Soc. 13: 90-92
- GÄRDENFORS U. (ed.) (2005): Rödlstade arter i Sverige 2005 – The 2005 Red List of Swedish Species. Artdatabanken, SLU, Uppsala.

- GRIMM U. (1986): Die Clubionidae Mitteleuropas. Corinninae und Liocraninae (Arachnida: Araneae). – Abh. Naturw. Ver. Hamburg (N.F.) 27: 1-91
- HEIMER S. & W. NENTWIG (1991): Spinnen Mitteleuropas. Parey. Berlin u. Hamburg. 542 pp.
- HELSDINGEN P.J. van (1999): Catalogus van de Nederlandse Spinnen (Araneae). – Nederl. Faun. Mededel. 10: 1-191
- JANSSEN M. (1991): Spinnen van de Mechelse Heide. – Natuurhist. Maandbl. 80: 12-16
- JOCQUÉ R. (1977): On the occurrence of *Agroeca dentigera* Kulczyński in Belgium (Araneae, Clubionidae). – Bull. Br. arachnol. Soc. 4: 80-82
- KOPONEN S., V. RĚLYS & D. DAPKUS (2001): Changes in structure of ground-living spider (Araneae) communities on peatbogs along a transect from Lithuania to Lapland. – Norw. J. Entomol. 48: 167-174
- KULCZYŃSKI V. (1913): Arachnoidea. In: VELITSCHOVSKY V. (ed.): Faune du district de Walouyky du gouvernement de Woronège (Russie). Vol. 10: 1-30; Krakau.
- KUPRYJANOWICZ J. (1997): Spiders of the Biebrza National Park – species new and rare to Poland. – Proc. 16th Europ. Coll. Arachnol.: 183-194; Siedlce.
- LOCKET G.H. & A.F. MILLIDGE (1953): British Spiders, vol. II. Ray Society, London. 449 pp.
- MIKHAILOV K.G. (1997): Catalogue of spiders of the territories of the former Soviet Union (Arachnida, Aranei). KMK Scientific Press, Moscow. 416 pp.
- OLTEAN C. (1973): *Agroeca dentigera* Kulczyński 1913 (Aran., Clubionidae), eine seltene Art, neu für Rumäniens Fauna. – Stud. Cercetari Biol., Ser. Zool. 25: 105-110
- PICKARD-CAMBRIDGE O. (1900): List of British & Irish spiders. Sime & Co, Dorchester. 86 pp.
- PICKARD-CAMBRIDGE O. (1902): On new and rare British Arachnida. – Proc. Dorset Nat. Hist. Field Club 23: 16-40
- PICKARD-CAMBRIDGE O. (1903): On new and rare British spiders. – Proc. Dorset Nat. Hist. Field Club 24: 149-171
- PICKARD-CAMBRIDGE O. (1913): On new and rare British Arachnida. – Proc. Dorset Nat. Hist. Field Club 34: 107-136
- PLATEN R., B. von BROEN, A. HERRMANN, U.M. RATSCHKE & P. SACHER. (1999): Gesamtartenliste und Rote Liste der Webspinnen, Weberknechte und Pseudoskorpione des Landes Brandenburg (Arachnida: Araneae, Opiliones, Pseudoscorpiones) mit Angaben zur Häufigkeit und Ökologie. – Natursch. Landschaftspfl. Brandenburg 8 (2), Beilage: 1-69
- RĚLYS V. & D. DAPKUS (2002): Comments to the checklist of Gnaphosidae and Liocranidae (Arachnida, Araneae) of the Baltic States, with remarks on species new to Lithuania. – European Arachnology 2000, Proc. 19th Europ. Coll. Arachnol.: 273-278; Århus.
- RĚLYS V., S. KOPONEN & D. DAPKUS (2002): Annual differences and species turnover in peat bog spider communities. – J. Arachnol. 30: 416-424
- ROBERTS M.J. (1987): The Spiders of Great Britain and Ireland. Vol. 2. Harley, Colchester. 204 pp.
- ROBERTS M.J. (1998): Spinnen Gids. Tirion, Baarn. 395 pp.
- RUSSEL-SMITH A. (2002): *Entelecara omissa*. p. 83. In: HARVEY P.R., D. NELLIST & M.G. TELFER (eds.): Provisional Atlas of British Spiders (Arachnida, Araneae), Vol. 1: 1-214. Biological Records Centre, Huntingdon.
- SCHIKORA H.B. (1994): *Entelecara omissa* neu für Deutschland (Araneae: Linyphiidae). – Arachnol. Mitt. 8: 63-64
- STAUDT A. (2004): Nachweiskarten der Spinnentiere Deutschlands (Arachnida: Araneae, Opiliones, Pseudoscorpiones). – Internet: <http://www.spiderling.de/vu/>
- STERGHIU C. (1985): Fam. Clubionidae. Arachnida. – Fauna Rep. Soc. Romania 5: 1-168
- TAZOE S. (1993): A new species of the genus *Entelecara* (Araneae: Linyphiidae) from Iriomotejima Island, Southwest Japan. – Acta Arachnol. 42: 69-72
- TULLGREN A. (1955): Zur Kenntnis schwedischer Eriгонiden. – Ark. Zool. (2) 7: 295-389
- VILBASTE A. (1987): Eesti Ämblikud (Aranei). Annoteeritud nimestik. [Estonian spiders (Aranei). An annotated checklist.]. Eesti NSV Teaduste Akadeemia, Tallin. 178 pp.
- WUNDERLICH J. (1975): Dritter Beitrag zur Spinnenfauna Berlins (Arachnida: Araneae). – Sb. Ges. naturf. Fr. Berlin N.F. 15: 39-57



Jonsson, Lars J . 2005. "Agroeca dentigera and Entelecara omissa (Araneae: Liocranidae, Linyphiidae) found in Sweden." *Arachnologische Mitteilungen* 29, 49–52. <https://doi.org/10.5431/aramit2908>.

View This Item Online: <https://www.biodiversitylibrary.org/item/202071>

DOI: <https://doi.org/10.5431/aramit2908>

Permalink: <https://www.biodiversitylibrary.org/partpdf/172376>

Holding Institution

Smithsonian Libraries and Archives

Sponsored by

Biodiversity Heritage Library

Copyright & Reuse

Copyright Status: In Copyright. Digitized with the permission of the rights holder

Rights Holder: Arachnologische Gesellschaft

License: <http://creativecommons.org/licenses/by-nc/3.0/>

Rights: <https://www.biodiversitylibrary.org/permissions/>

This document was created from content at the **Biodiversity Heritage Library**, the world's largest open access digital library for biodiversity literature and archives. Visit BHL at <https://www.biodiversitylibrary.org>.