

attached (omitted in 'British Mollusca'); but of course it can only be regarded, as well as the *Ianthinae*, as occasional visitants of our coasts, having been probably brought hither by the Gulf Stream.

1 Montagu Square, London.
Dec. 1857.

EXPLANATION OF PLATE II.

- Fig. 1. *Poromya subtrigona*.
Fig. 2. *Diodonta Barleei*.
Fig. 3. *Odostomia minima*.
Fig. 4. Operculum of *O. truncatula*.
Fig. 5. *Eulimella obeliscus*.
Fig. 6. *Amphisphyra globosa*.

VI.—Descriptions of three new species of Diurnal Lepidoptera. By FREDERIC MOORE.

Genus LIMENITIS, Fabr.

1. *Limenitis Mata*, Moore.

Distinguished from *Lim. Procris* by the black colour of the upper side, and deep red of the transverse band from apex of fore-wing to abdominal angle, and a short, transverse band near the base of the fore-wing; also in the white spots of the fore-wing being widely separated, and the broad white band on the hind-wing being short and extending to the middle of the abdominal margin.

Expanse, $2\frac{5}{8}$ inches.

Hab. Manilla. In Coll. Brit. Mus. and W. W. Saunders, Esq.

2. *Limenitis Calidosa*, Moore.

Differs on the upper side from *Lim. Zulema*, Doubleday, in having the hind-wings more rounded; the transverse maculated band being narrower, and its outer margin on hind-wing much scalloped; also the spots on the fore-wing are widely separated, especially those obliquely from the costal margin; and the two small subapical spots are absent.

Expanse 2 inches.

Hab. Ceylon. In Coll. Brit. Mus. and E. L. Layard, Esq.

Genus HESTINA, Westwood.

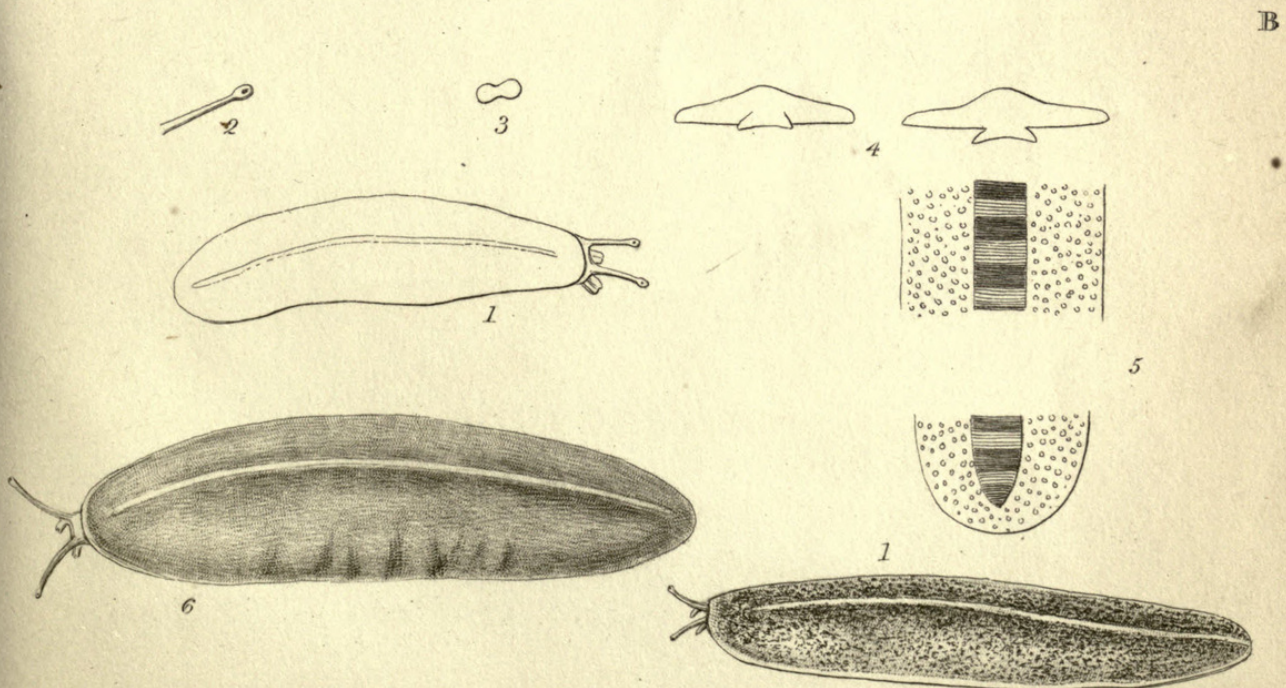
Diadema (Hestina), Westwood, in Doubleday and Hewitson's Diurnal Lep. p. 281 (1850).

3. *Hestina Mena*, Moore.

Male. Upper-side pale greenish-white; fore-wing with all the



J. De C. Sowerby fecit.



J. De C. Sowerby sc.



Moore, Frederic. 1858. "VI.—Descriptions of three new species of Diurnal Lepidoptera." *The Annals and magazine of natural history; zoology, botany, and geology* 1, 48–49.

View This Item Online: <https://www.biodiversitylibrary.org/item/19643>

Permalink: <https://www.biodiversitylibrary.org/partpdf/18342>

Holding Institution

Natural History Museum Library, London

Sponsored by

Natural History Museum Library, London

Copyright & Reuse

Copyright Status: Public domain. The BHL considers that this work is no longer under copyright protection.

This document was created from content at the **Biodiversity Heritage Library**, the world's largest open access digital library for biodiversity literature and archives. Visit BHL at <https://www.biodiversitylibrary.org>.