

December 10, 1850.

Prof. Owen, V.P., F.R.S., in the Chair.

The following papers were read :—

1. DESCRIPTION OF SEVERAL NEW SPECIES OF ENTOMOSTRACA.

By W. BAIRD, M.D., F.L.S. ETC.

(Annulosa, Pl. XVII. XVIII.)

Legion BRANCHIOPODA.

Order PHYLLOPODA.

Family APODIDÆ.

Genus LEPIDURUS, Leach.

1. LEPIDURUS VIRIDIS, Baird. (Pl. XVII. f. 1.)

Body of animal, including the flap of tail segment, about two inches long and one broad. The carapace and whole body are of a fine green colour, the carapace covering about two-thirds of the abdomen; the edges of the notch in the posterior part of carapace are strongly toothed, and those of the inferior half of the carapace are very finely serrated; these teeth are of two sets, the one much larger than the others; the larger teeth are of a green colour, tipped at the point with dark brown; they are about eleven in number, and between each there are two or three much smaller ones interspersed. The appendages of the first pair of feet are very short and small, scarcely extending beyond the edge of the carapace. The segments of the abdomen are each studded with a row of stout, slightly curved spines of a green colour tipped at their edges with dark brown. The tail flap is oval, keeled down the centre, the keel being beset with short sharp spines, and the edges of the flap are finely serrated. The long setae of the tail are nearly the length of the whole animal, and are covered with short hairs.

Hab. Van Diemen's Land. British Museum.

Legion LOPHYROPODA.

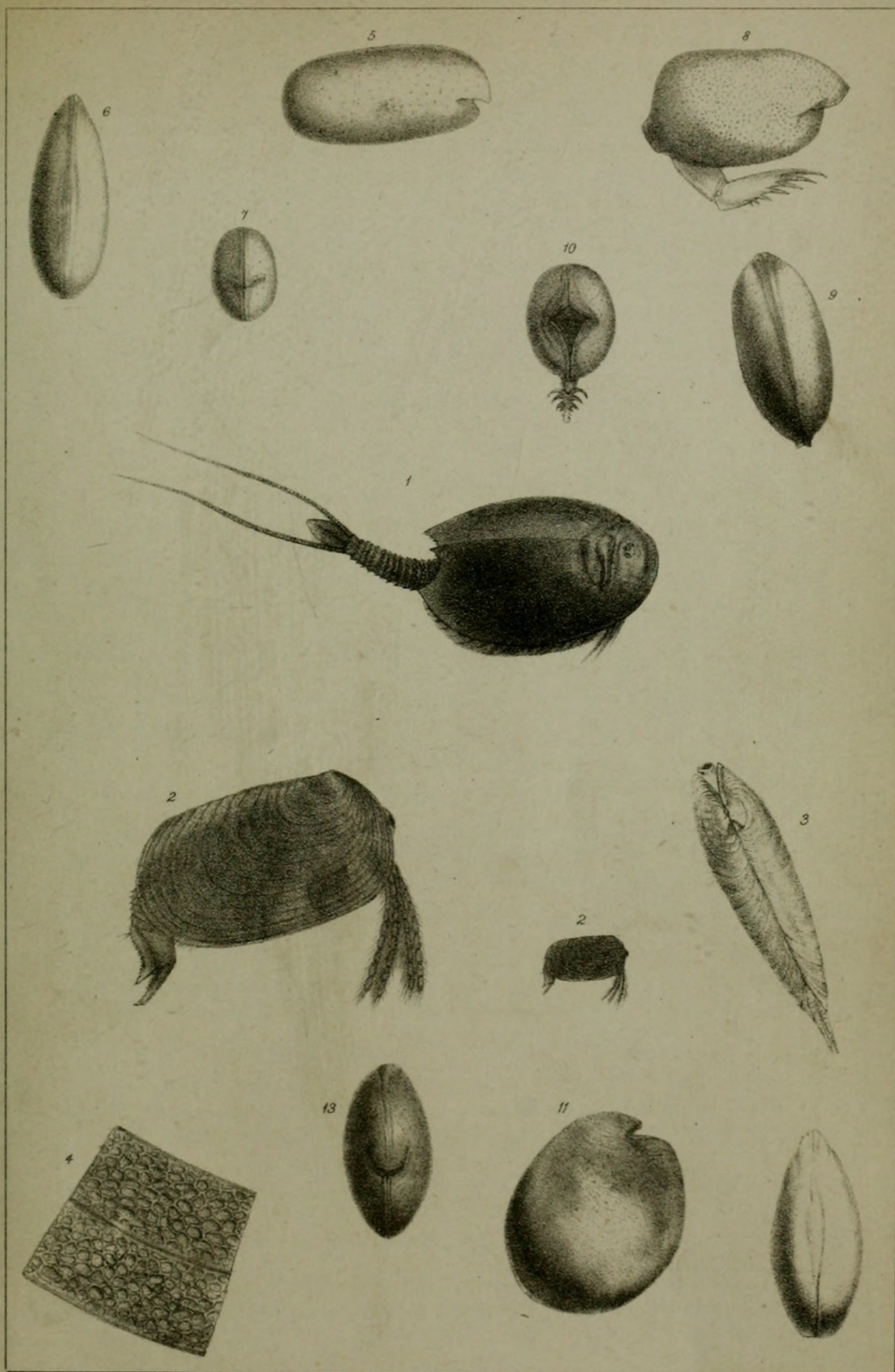
Order OSTRACODA.

Family CYPRIDIDÆ.

Genus CYPRIS, Müller.

1. CYPRIS DONNETII, Baird. (Pl. XVIII. f. 19-21.)

Carapace valves elongate oval. Anterior extremity narrower than posterior, and considerably flatter; posterior extremity rounded and very convex; dorsal edge arched; ventral slightly reniform. The surface of the valves is smooth and shining, of a brown colour, varie-



W. Wing, del. et lith.

Ford & West, Lithographers, 54, Rotten Garden.

1. LEPIDURUS VIRIDIS. 2, 3, 4. ESTHERIA DAHALACENSIS.
5, 6, 7. CYPRIDINA MARLE. 8, 9, 10. CYPRIDINA INTERPUNCTA.
11, 12, 13. CYPRIDINA ZEALANDICA



gated with patches of a darker shade. The pediform antennæ are provided with about six bristles of considerable length.

Hab. Freshwater ponds, Coquimbo; collected by — Donnet, Esq., Surgeon R.N. Brit. Mus.; from the collection of H. Cuming, Esq.

2. *CYPRIS CUNEATA*, Baird. (Pl. XVIII. f. 22–24.)

Carapace valves wedge-shaped, much broader at anterior than posterior extremity. Dorsal margin highly arched; ventral deeply sinuated in the centre, giving the shell a reniform appearance. Valves very convex in the centre, and surrounded by a prominent margin, which at the anterior extremity, when highly magnified, is seen to be minutely and finely serrated. The whole carapace is of a deep green colour, and covered with fine hairs.

Hab. Duddingston Loch, near Edinburgh; August 1850.

Genus *CANDONA*, Baird.

1. *CANDONA LACTEA*, Baird. (Pl. XVIII. f. 25–27.)

Carapace valves oblong ovate, convex. Dorsal margin nearly straight; ventral slightly sinuated in the centre. Anterior and posterior extremities of nearly equal size. Surface of valves smooth and shining, and of a dull white colour.

This species resembles in shape the *Candona reptans*, but is only about one-fourth the size, and is of a uniform dull white colour.

Hab. Freshwater pond at Charing, Kent; collected by W. Harris, Esq., to whom I am indebted for specimens. Regent's Park (*T. Rupert Jones, Esq.*).

Genus *CY THERE*, Müller.

1. *CY THERE TARENTINA*, Baird. (Pl. XVIII. f. 31–33.)

Carapace valves obovate. Anterior extremity much broader than posterior, and having a broad flat margin striated on the surface and toothed round the edge; posterior extremity pointed, having the same margin, but not so broad, and with much fewer teeth. The valves are very convex in the middle, of a greyish colour, with a white patch in the centre, and are slightly pitted all over. Dorsal and ventral margins both somewhat prominent.

Hab. Tarentum. In Mr. Williamson's collection.

2. *CY THERE SETOSA*, Baird. (Pl. XVIII. f. 28–30.)

Carapace valves oval. Anterior extremity narrower than posterior. Dorsal margin arched; ventral sinuated about its anterior third. Surface of valves shining white, and studded all over with short stiff hairs.

Hab. Moreton Bay, Australia, and Tenedos. Mr. Williamson's collection.

Genus *CY THEREIS*, Jones.

1. *CY THEREIS AUSTRALIS*, Baird. (Pl. XVIII. f. 10–12.)

Carapace valves somewhat quadrilateral. Dorsal and ventral mar-



Baird, William. 1850. "Descriptions of several new species of Entomostraca." *Proceedings of the Zoological Society of London* 1850, 254–257.

View This Item Online: <https://www.biodiversitylibrary.org/item/46212>

Permalink: <https://www.biodiversitylibrary.org/partpdf/18763>

Holding Institution

Natural History Museum Library, London

Sponsored by

Natural History Museum Library, London

Copyright & Reuse

Copyright Status: Public domain. The BHL considers that this work is no longer under copyright protection.

This document was created from content at the **Biodiversity Heritage Library**, the world's largest open access digital library for biodiversity literature and archives. Visit BHL at <https://www.biodiversitylibrary.org>.