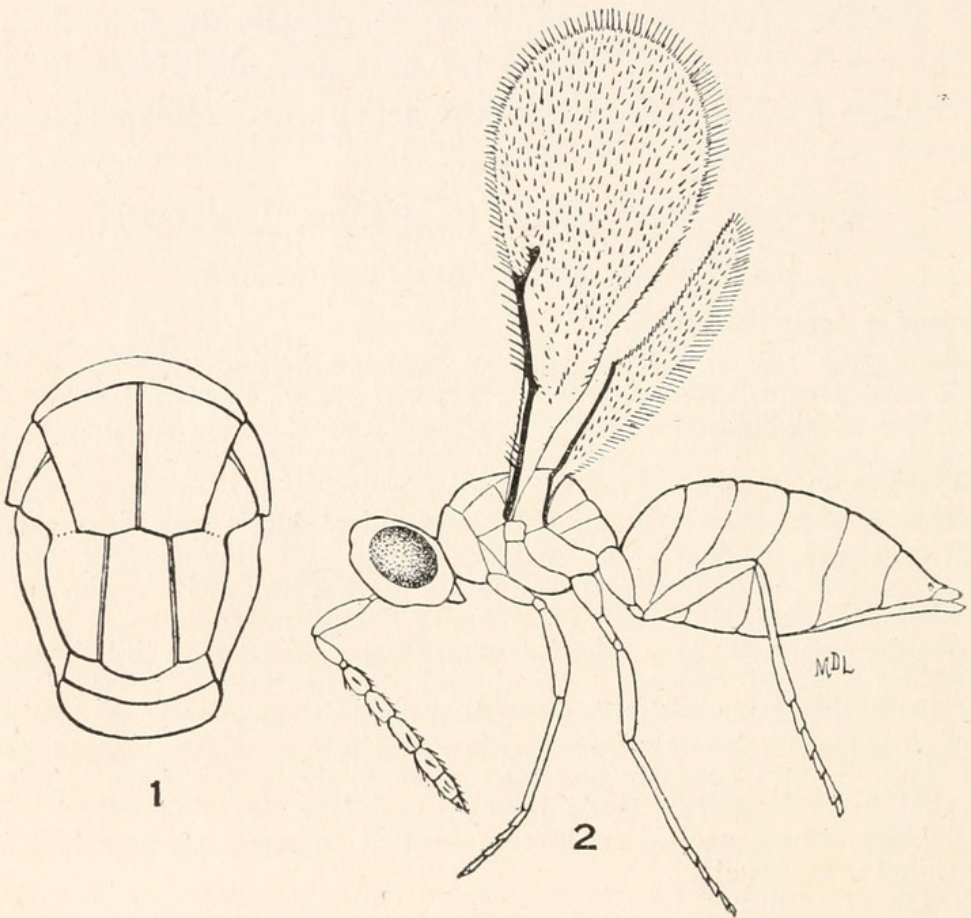


An Egg Parasite of the Sumac Flea-Beetle (Hym., Chalcid.).

By C. R. CROSBY and M. D. LEONARD, Cornell University,
Ithaca, New York.

Mr. Loren B. Smith, of Norfolk, Virginia, has sent us specimens of a hymenopterous parasite reared by him from the eggs of the sumac flea-beetle (*Blepharida rhois* Forster). The species is apparently undescribed.



Tetrastichus ovipransus n. sp.

♀ Length, 1.2 mm. General color bluish black. Head bluish black, brownish in front of ocelli in alcoholic specimens. Thorax bluish black, very finely longitudinally striolate. Antennae yellowish brown, scape noticeably paler. The relative length of the antennal segments may be expressed by the following ratio: scape 6, pedicel 3, funicle segments 4, 4.5, 4.5, club 10. Ring segment small but distinct. The three-segmented club is of the same width as the funicle segments and pointed at the tip. Coxae and femora, except tip, black, remainder of legs pale straw colored. Abdomen dark brownish with a metallic tinge, especially above.

Described from 14 female specimens reared July 20, 1916, and 3 female specimens reared June 24, 1916, from eggs of *Blepharida rhois*, Norfolk, Virginia.

Types in the Cornell University collection. Type No. 76.



Crosby, Cyrus Richard. 1917. "An egg parasite of the sumac flea-beetle." *Entomological news, and proceedings of the Entomological Section of the Academy of Natural Sciences of Philadelphia* 28, 368.

View This Item Online: <https://www.biodiversitylibrary.org/item/20201>

Permalink: <https://www.biodiversitylibrary.org/partpdf/19183>

Holding Institution

Smithsonian Libraries and Archives

Sponsored by

Smithsonian

Copyright & Reuse

Copyright Status: NOT_IN_COPYRIGHT

This document was created from content at the **Biodiversity Heritage Library**, the world's largest open access digital library for biodiversity literature and archives. Visit BHL at <https://www.biodiversitylibrary.org>.