

ARNOLDIA



A continuation of the
BULLETIN OF POPULAR INFORMATION
of the Arnold Arboretum, Harvard University

VOLUME 23

JANUARY 18, 1963

NUMBER 1

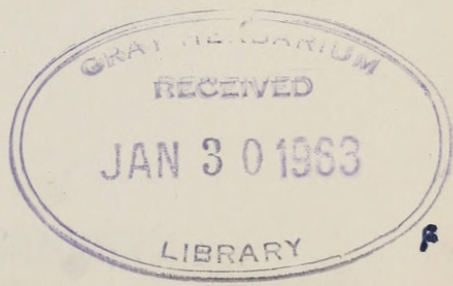
TRIAL PLOT FOR STREET TREES

DURING the spring of 1951 a trial plot of eighty small ornamental trees was planted on the Case Estates of the Arnold Arboretum in Weston (see *Arnoldia* 16: (3) 9-15, 1956). A few of these were not happy in their location and promptly died, or did so poorly as to warrant their removal. A few new varieties were added to the original group, but for the most part these trees have been growing there since the trial plot was first laid out. The collection has been of special interest to home owners in the suburban areas of Boston, who naturally are interested in small ornamental trees. It has also been of considerable interest to the tree wardens of various towns throughout New England, for here one may see many of the best small trees growing side by side, so that comparisons can be easily made.

Recently this plot has been of interest to the Electric Council of New England, a group of utility companies which provide various electric services for the public in addition to stringing electric lines for these services. When the right kinds of trees are planted properly in the right places along the streets and highways, there need be but little competition between the trees and the wires. Today these companies are employing arborists to help the public in this very type of intelligent planting. As an outgrowth of this new interest on the part of the electric companies, a booklet was published in 1960 by the Electric Council of New England. This is entitled, "Trees in Your Community," and 150,000 copies have already been distributed throughout the New England area. A few copies are still available and may be obtained from the local member electric companies of the Electric Council of New England.

While the booklet was in process of preparation the Arnold Arboretum was asked to make suggestions as to the trees which should appear in the final list. After the booklet was published and widely distributed, Mr. George Wignot of the Boston Edison Company requested the Arboretum to consider the possibility of adding to our Trial Plot of Street Trees those mentioned in the booklet which

[1]



were not already growing in this plot. Stimulated by this interest on the part of the Boston Edison Company and aided in acquiring some of the trees which we did not have, we enlarged this trial plot so that with the exception of four, it now includes all of the trees recommended in the booklet. Those four will be added as soon as they can be obtained.

Some of the trees growing in this plot since 1951 are now excellent specimens; those just planted last fall need a year or two of growth to demonstrate their true worth. In any event, the following list indicates the trees now growing in the trial plot. They include all but four of those in the booklet, "Trees in Your Community," plus seventy others which have merit under certain specific conditions. Three-fourths of them are under thirty-five feet in height, excellent subjects either as ornamentals on the small lot or as street trees.

All in all, 109 species and varieties of trees are now growing in this Trial Plot. Since these are among the best deciduous trees available for ornamental planting, every home owner and tree warden might gain much information by visiting this plot at some time during the year. On page 8 of this bulletin there is a map showing the location of the Trial Plot for Street Trees, on the grounds of the Case Estates of the Arnold Arboretum in Weston. This Plot in Weston is off Wellesley Street which runs between Routes 20 and 30.

Rows are numbered from the road bordering this plot, the first numbers being at the southeast or Wellesley Street end of the rows.

*=Trees under 25 feet tall at maturity.

†=Trees over 35 feet tall at maturity.

×=Hybrid.

		Row	Plant
*Acer campestre	Hedge Maple	6	2
— carpinifolium	Hornbeam Maple	5	11
*— ginnala	Amur Maple	2	1
*— griseum	Paperbark Maple	2	3
†— pseudoplatanus	Sycamore Maple	6	4
— rufinerve	Redvein Maple	5	10
— tataricum	Tatarian Maple	3	4
*— triflorum	Threeflower Maple	5	2; 9
*— truncatum	Purpleblow Maple	5	16
†— platanoides 'Columnare'	Columnar Norway Maple	3	5
†— rubrum 'Columnare'	Columnar Red Maple	3	7
†— platanoides 'Erectum'	Erect Norway Maple	3	6
†— platanoides 'Fassen's Black'	Fassen's Black Maple	4	22
*— platanoides 'Globosum'	Globe Norway Maple	2	5
*— saccharum 'Globosum'	Globe Sugar Maple	2	6
†— saccharum 'Temples' Upright'	Temples' Upright Maple	3	8
Amelanchier laevis	Allegheny Serviceberry	3	18

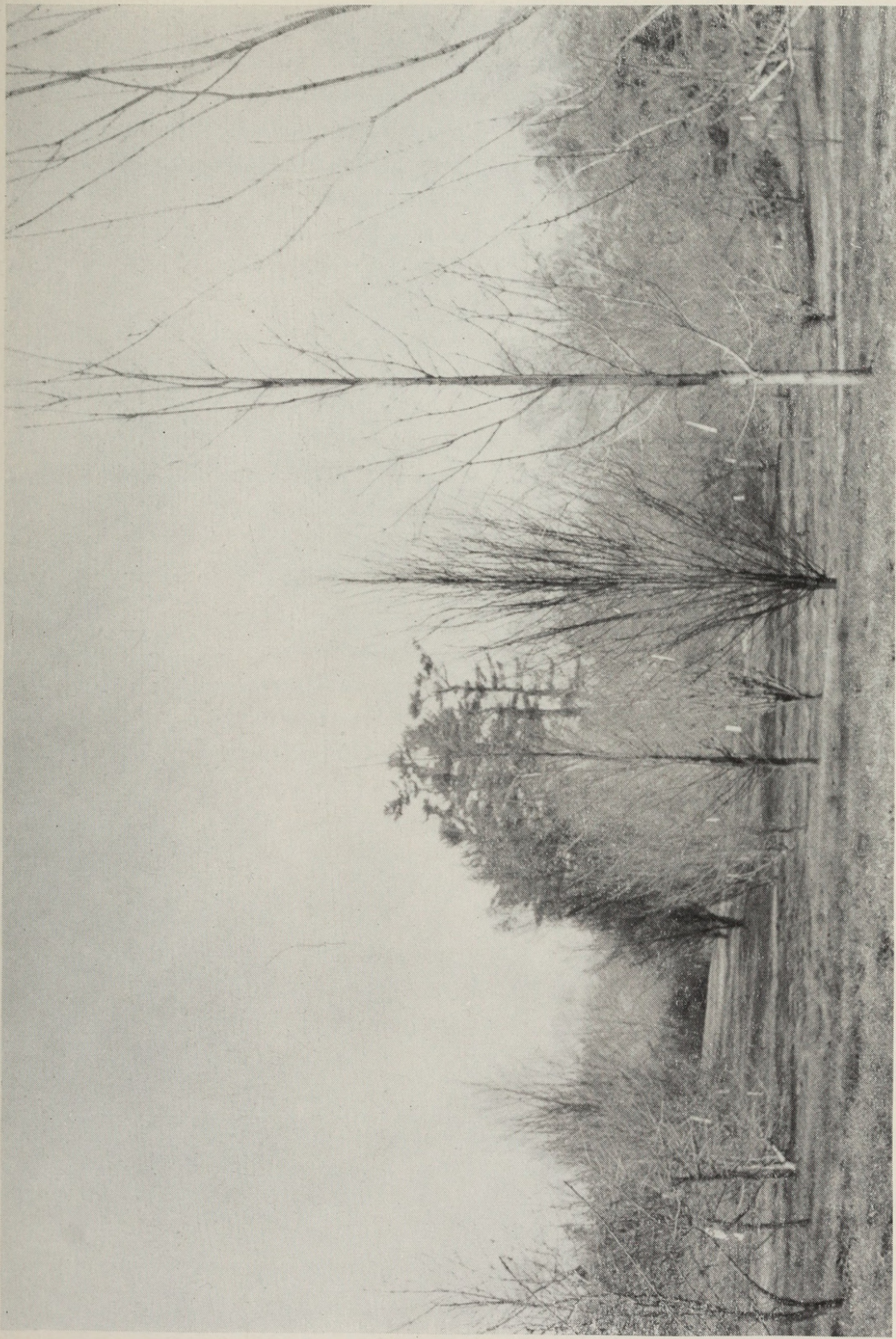


PLATE I

Part of the Trial Plot for Street Trees on the Case Estates of the Arnold Arboretum in Weston, Mass. (See map, p. 8).
One hundred and nine species and varieties are growing here.

		Row	Plant
Betula pendula 'Fastigiata'	Pyramidal European Birch	3	14
*Caragana arborescens 'Pendula'	Weeping Siberian Pea-tree	5	17
‡Carpinus betulus	European Hornbeam	6	6
‡— cordata	Heartleaf Hornbeam	4	3
‡— japonica	Japanese Hornbeam	4	4
— betulus 'Fastigiata'	Pyramid European Hornbeam	3	9
Carpinus caroliniana 'Pyramidalis'	Pyramid American Hornbeam	3	10
‡Cercidiphyllum japonicum	Katsura Tree	3	11
Cercis canadensis	Eastern Redbud	2	11
Chionanthus retusus	Chinese Fringetree	2	10
— virginicus	Fringetree	2	9
‡Cladrastis lutea	American Yellow-wood	6	5
Cornus florida	Flowering Dogwood	2	7
*— kousa chinensis	Chinese Dogwood	2	2
*— mas	Cornelian Cherry	4	11
— florida 'Fastigiata'	Upright Flowering Dogwood	3	12
Crataegus crus-galli	Cockspur Thorn	3	2
— flava	Yellow Hawthorn	3	19
× — lavalleyi	Lavalle Hawthorn	2	16
— monogyna inermis	Thornless Hawthorn	5	3
— nitida	Glossy Hawthorn	4	2
— phaenopyrum	Washington Hawthorn	3	20
— punctata	Dotted Hawthorn	3	1
— 'Autumn Glory'	Autumn Glory Hawthorn	4	23
— phaenopyrum 'Fastigiata'	Pyramidal Washington Hawthorn	3	13
— monogyna 'Stricta'	Pyramidal Singleseed Hawthorn	3	3
*Elaeagnus angustifolia	Russian Olive	4; 5	21; 21
*Evodia daniellii	Korean Evodia	4	5
‡Fraxinus ornus	Flowering Ash	6	4
‡Ginkgo biloba 'Fastigiata'	Sentry Ginkgo	3	15
‡Gleditsia triacanthos inermis	Thornless Honey-locust	6	17
*— — 'Elegantissima'	Bushy Honey-locust	5	7
Halesia carolina	Carolina Silverbell	2	12
‡— monticola rosea	Pink Mountain Silverbell	5	13
Koelreuteria paniculata	Golden-rain Tree	4	18
Laburnum alpinum	Scotch Laburnum	2	14
— anagyroides semperflorens	Autumn Goldenchain	2	15
×‡Magnolia loebneri	Loebner Magnolia	4	10
×*Malus arnoldiana	Arnold Crab Apple	1	5



PLATE II

Pin Oak (on the right of this road) used as a street tree along the Veterans of Foreign Wars Parkway near the Arnold Arboretum.

		Row	Plant
* <i>Malus prunifolia</i> rinki	Chinese Pearleaf Crab Apple	1	9
‡— <i>pumila</i> niedzwetzkyana	Redvein Crab Apple	1	14
×*— <i>purpurea</i>	Purple Crab Apple	1	7
×*— <i>robusta</i>	Cherry Crab Apple	1	15
×*— ‘Almey’	Almey Crab Apple	1	13
×*— ‘Case Seedling’	Case Seedling Crab Apple	1	11
×*— ‘Crimson Brilliant’	Crimson Brilliant Crab Apple	1	12
×*— ‘Dolgo’	Dolgo Crab Apple	1	6
*— <i>purpurea</i> ‘Eleyi’	Eley Crab Apple	1	8
×*— ‘Hopa’	Hopa Crab Apple	1	16
×*— ‘Jay Darling’	Jay Darling Crab Apple	1	10
×*— ‘Katherine’	Katherine Crab Apple	1	3
*— <i>purpurea</i> ‘Lemoinei’	Lemoine Purple Crab Apple	1	4
×*— ‘Pink Weeper’	Pink Weeper Crab Apple	1	2
×*— ‘Oekonomierat Echtermeyer’		1	1
‡ <i>Nyssa sylvatica</i>	Black Tupelo	6	9
‡ <i>Ostrya virginiana</i>	Hop Hornbeam	5	20
‡ <i>Oxydendrum arboreum</i>	Sourwood	6	1
‡ <i>Phellodendron amurense</i>	Amur Cork Tree	6	14
×‡ <i>Platanus acerifolia</i>	London Plane Tree	6	8
‡ <i>Prunus sargentii</i>	Sargent Cherry	5	4
— <i>subhirtella autumnalis</i>	Autumn Higan Cherry	6	16
*— <i>serrulata</i> ‘Amanogawa’	Amanogawa Oriental Cherry	5	8
*— <i>cerasifera</i> ‘Atropurpurea Veitchii’	Veitch Pissard Plum	4	20
*— <i>serrulata</i> ‘Botan Zakura’	Botan Zakura Oriental Cherry	4	7
— <i>sargentii</i> ‘Columnaris’	Columnar Sargent Cherry	3	16
*— <i>serrulata</i> ‘Joi Nioi’	Joi Nioi Oriental Cherry	4	8
*— — ‘Kwanzan’	Kwanzan Oriental Cherry	5	6
*— — ‘Ojochin’	Ojochin Oriental Cherry	5	12
*— <i>virginiana</i> ‘Shubert’	Shubert Chokecherry	5	5
‡ <i>Quercus palustris</i>	Pin Oak	6	11
‡— <i>robur</i> ‘Fastigiata’	Pyramidal English Oak	3	17
* <i>Rhamnus koraiensis</i>	Korean Buckthorn	4	17
‡ <i>Sophora japonica</i>	Japanese Pagoda Tree	6	10
‡ <i>Sorbus alnifolia</i>	Korean Mountain-ash	4	1
— <i>arnoldiana</i>	Arnold Mountain-ash	4	16
‡— <i>aucuparia</i>	European Mountain-ash	5	18
‡— — <i>asplenifolia</i>	Cutleaf European Mountain-ash	2	8
— <i>discolor</i>	Snowberry Mountain-ash	5	19
*— <i>folgneri</i>	Folgnier Mountain-ash	2	13

		<i>Row</i>	<i>Plant</i>
Sorbus aucuparia 'Fastigiata'	Upright European Mountain-		
	ash	4; 5	15; 14
*— decora 'Nana'	Dwarf Showy Mountain-ash	5	1
‡Stewartia koreana	Korean Stewartia	4	12
Syringa amurensis	Amur Lilac	2	4
‡Tilia cordata	Little-leaf Linden	6	12
× ‡— euchlora	Crimean Linden	6	13
— americana 'Fastigiata'	Upright American Linden	4	6
‡Ulmus parvifolia	Chinese Elm	4	13
‡— americana 'Augustine'	Augustine Elm	4	19
*Viburnum prunifolium	Blackhaw	4	14
— rufidulum	Southern Blackhaw	4	9
‡Zelkova serrata	Japanese Zelkova	6	18

DONALD WYMAN

THE CASE ESTATES OF THE ARNOLD ARBORETUM WESTON, MASSACHUSETTS

75.35
100 200 300
Scale in feet
Jan. 1, 1963
Total Area 112.5 Acres

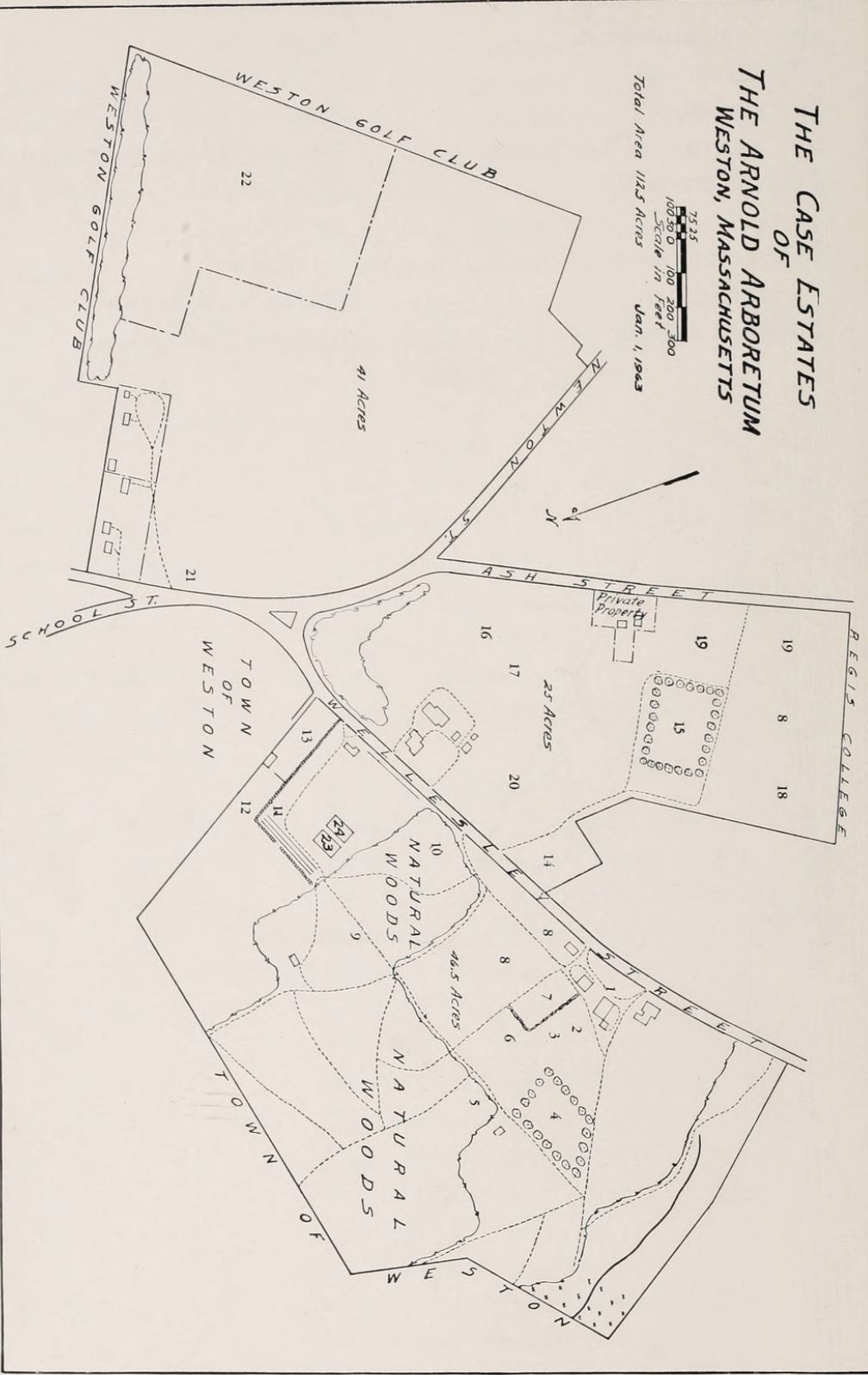


PLATE III

- 1 Barn, 135 Wellesley St. 2 Cold Frames. 3 Young Plant House. 4 Malus sikkimensis Orchard. 5 Holly Collection.
- 6 Evergreen Nursery. 7 Ericaceous Nursery. 8 Nursery. 9 Woods Path. 10 Rhododendrons. 11 Vine Trellis.
- 12 Trial Plot for Street Trees. 13 Ground Cover Plots. 14 Perennial and Small Shrub Garden. 15 Orchard. 16
- Beach Plum Collection. 17 Dwarf Fruit Trees. 18 Permanent Barberry and Currant Collection. 19 Permanent
- Shrub Testing Plot. 20 Shrub Experimental Plot. 21 Oriental Crab Apples. 22 Cabot Foundation Experimental Plot.
- 23 Daffodil Trial Plots (in cooperation with the New England Daffodil Society). 24 Lily Trial Plots (in cooperation
- with the New England Regional Lily group).



Wyman, Donald. 1963. "Trial Plot for Street Trees." *Arnoldia* 23(1), 1–8.

View This Item Online: <https://www.biodiversitylibrary.org/item/217356>

Permalink: <https://www.biodiversitylibrary.org/partpdf/249471>

Holding Institution

Harvard University Botany Libraries

Sponsored by

BHL-SIL-FEDLINK

Copyright & Reuse

Copyright Status: In copyright. Digitized with the permission of the rights holder.

Rights Holder: Arnold Arboretum of Harvard University

License: <http://creativecommons.org/licenses/by-nc-sa/4.0/>

Rights: <https://biodiversitylibrary.org/permissions>

This document was created from content at the **Biodiversity Heritage Library**, the world's largest open access digital library for biodiversity literature and archives. Visit BHL at <https://www.biodiversitylibrary.org>.