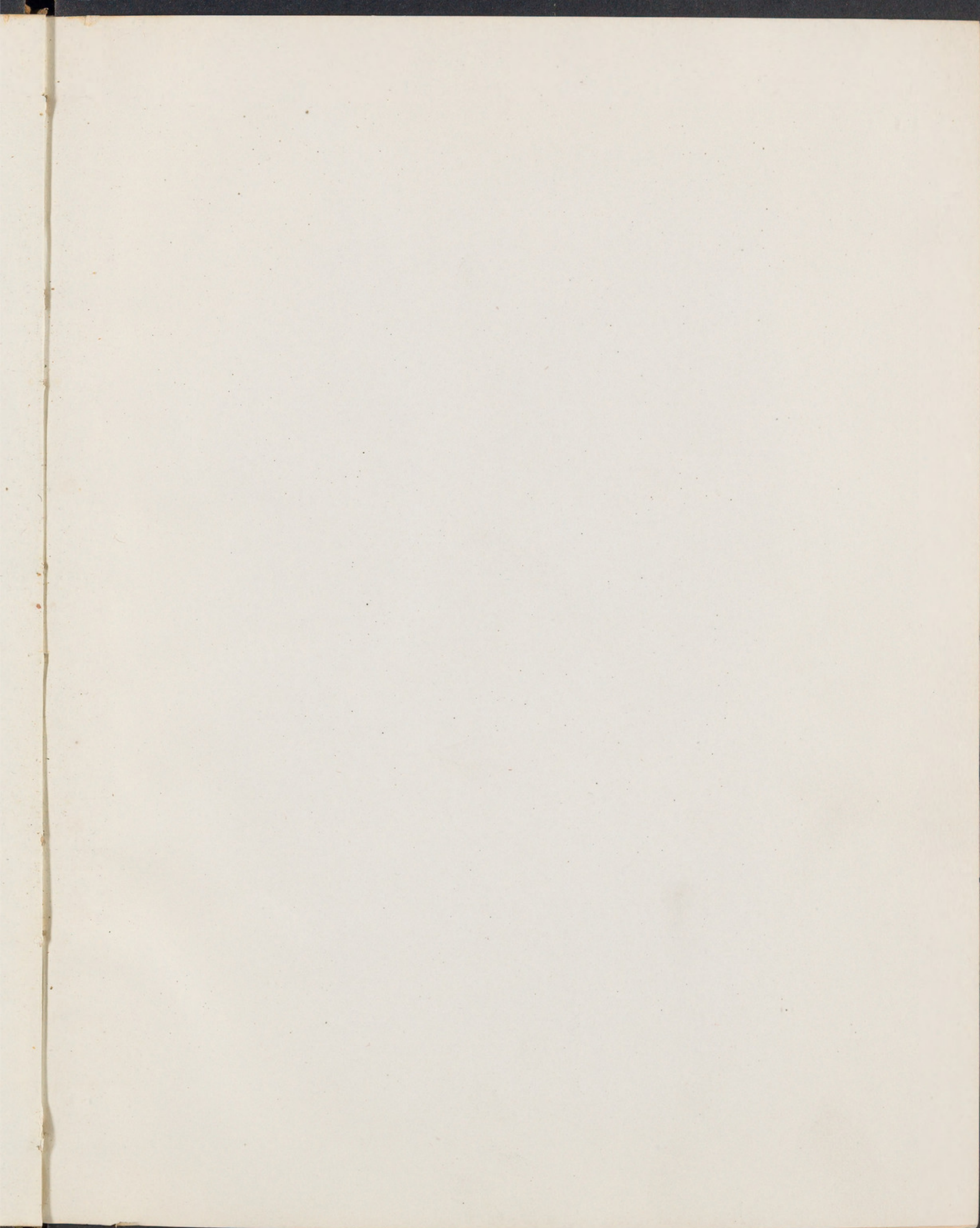
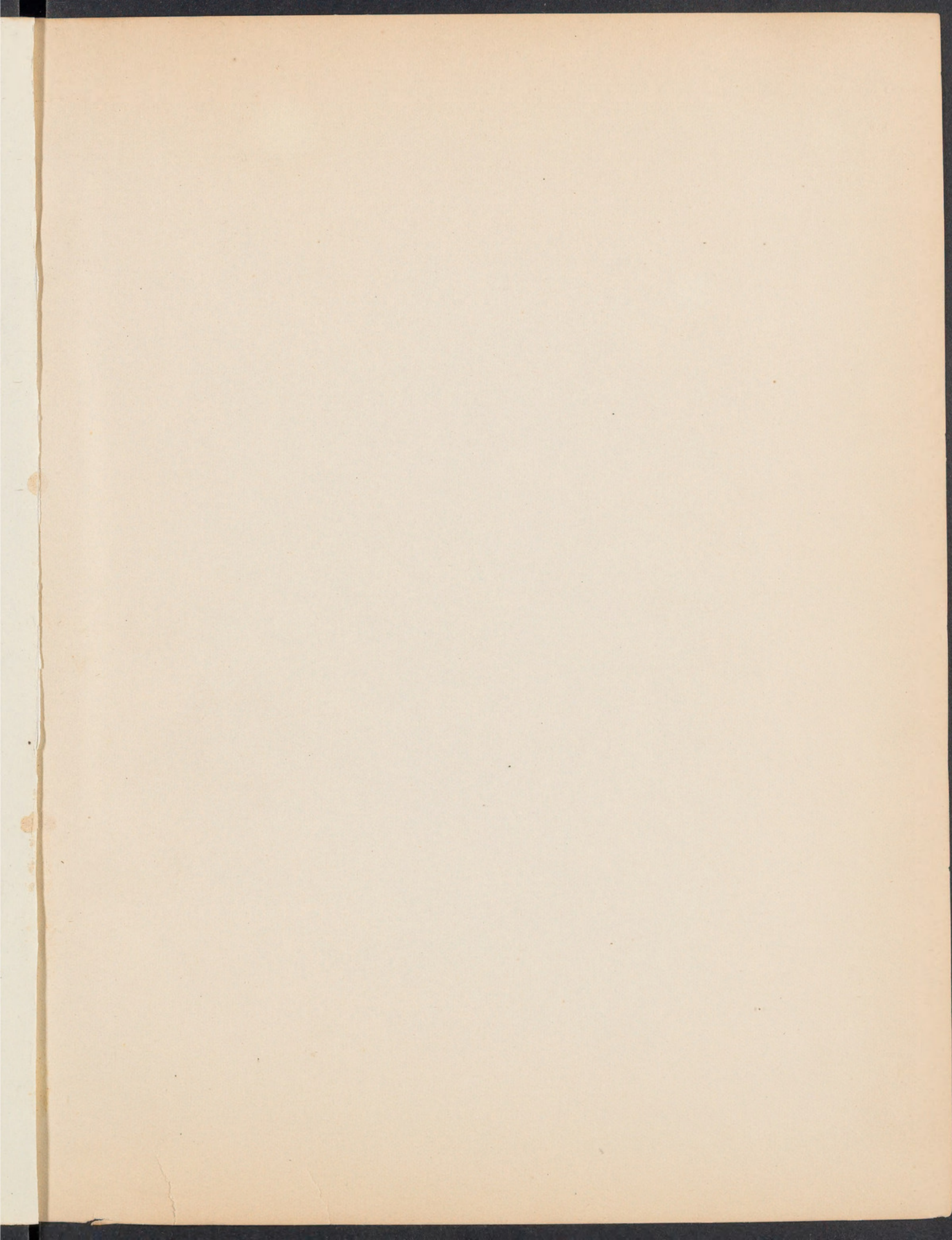


A complete set of labels
for Ezra Brainerd's distribution
of violets in 1910 -

1 - 181





VIOLETS OF EASTERN NORTH AMERICA,
Distributed by Ezra Brainerd, Middlebury, Vermont, 1910.

1. Viola affinis LeConte.

Low shady borders of Lake Champlain, North Hero, Vt.

E. B. collector,

May 20, 1904.

VIOLETS OF EASTERN NORTH AMERICA,
Distributed by Ezra Brainerd, Middlebury, Vermont, 1910.

2. Viola affinis LeConte.

Low shady borders of Lake Champlain, North Hero, Vt.

E. B. collector,

July 23, 1910.

VIOLETS OF EASTERN NORTH AMERICA,
Distributed by Ezra Brainerd, Middlebury, Vermont, 1910.

3. Viola affinis LeConte.

Transplanted from Milltown, N. J., 1906; *Miss Ryon*, donor.

Sowing 205; ex horto E. B. collector,

May 20, 1910.

VIOLETS OF EASTERN NORTH AMERICA,
Distributed by Ezra Brainerd, Middlebury, Vermont, 1910.

4. *Viola affinis* LeConte.

Moist woodland, Plainfield, N. J., capsules pubescent. Transplanted
Sept. 1906.

Ex horto E. B. collector,

July 26, 1910.

VIOLETS OF EASTERN NORTH AMERICA,
Distributed by Ezra Brainerd, Middlebury, Vermont, 1910.

5 *Viola affinis* LeConte.

Transplanted from Beltsville, Md., July 1907; *Mrs. Agnes Chase* donor.
"Alluvial soil in low dense woods."

Ex horto E. B. collector,

June 20, 1910.

VIOLETS OF EASTERN NORTH AMERICA,
Distributed by Ezra Brainerd, Middlebury, Vermont, 1910.

6. *Viola affinis* LeConte.

Transplanted from Biltmore, N. C., May 1909; *Eggleson* donor.

Sowing 766; ex horto E. B. collector,

September 6, 1910.

VIOLETS OF EASTERN NORTH AMERICA,
Distributed by Ezra Brainerd, Middlebury, Vermont, 1910.

7. *Viola affinis* × *cucullata* Brainerd.

Rhodora viii, 49.

Transplanted from Montcalm, N. J., July 1907; *Vreeland*, donor.

Ex horto E. B. collector,

May 19, 1910.

VIOLETS OF EASTERN NORTH AMERICA,
Distributed by Ezra Brainerd, Middlebury, Vermont, 1910.

8. *Viola affinis* × *nephrophylla* Brainerd.

Rhodora viii, 20.

Transplanted from near Milwaukee, Wis., June 1907; *Dr. Ogden* donor.
"Boggy meadow near a stream from a cold spring."

Sowing 397; ex horto E. B. collector,

May 24, 1910.

VIOLETS OF EASTERN NORTH AMERICA,
Distributed by Ezra Brainerd, Middlebury, Vermont, 1910.

9. *Viola affinis* × *nephrophylla* Brainerd.

Rhod. viii, 50.

Providence Island, Lake Champlain, Vt.

E. B. collector.

July 22, 1905.

VIOLETS OF EASTERN NORTH AMERICA,
Distributed by Ezra Brainerd, Middlebury, Vermont, 1910.

10. *Viola affinis* × *sagittata* Brainerd.

Rhod. viii. 55.

Transplanted from Staten Island, N. Y., May 1907, *Dowell* 4681.

Sowing 545; ex horto E. B. collector.

Sept. 10, 1910.

VIOLETS OF EASTERN NORTH AMERICA,
Distributed by Ezra Brainerd, Middlebury, Vermont, 1910.

11. *Viola affinis* × *sagittata* Brainerd.

Rhodora viii. 55.

Transplanted from Tinicum, Pa., May 1906, *W. Stone*, donor.

Stable offspring with pubescent capsules of *V. affinis* and brown seeds of *V. sagittata*. See *Am. Nat.* xlv. 229.

Ex horto E. B. collector,

September 9, 1910.

VIOLETS OF EASTERN NORTH AMERICA,
Distributed by Ezra Brainerd, Middlebury, Vermont, 1910.

12. *Viola arenaria* DC.

Sterile pastures at base of mountain, Middlebury, Vt.

E. Brainerd collector,

May 13 and 29, 1910.

VIOLETS OF EASTERN NORTH AMERICA,
Distributed by Ezra Brainerd, Middlebury, Vermont, 1910.

13. *Viola arvensis* Murray.

Cultivated ground, Biltmore, N. C.

E. Brainerd collector,

April 23, 1910.

VIOLETS OF EASTERN NORTH AMERICA,
Distributed by Ezra Brainerd, Middlebury, Vermont, 1910.

14. *Viola arvensis* Murray.

From seed collected at Biltmore, N. C., April 23, 1910.

Ex horto E. B. collector,

July 28, 1910.

[A third crop, self-sown, appeared in September.]

VIOLETS OF EASTERN NORTH AMERICA,
Distributed by Ezra Brainerd, Middlebury, Vermont, 1910.

15. *Viola blanda* Willd.

See *Rhodora* vii. 245.

Moist humus in grove of sugar maples, Bristol, Vt.

E. Brainerd collector,

August 8, 1910.

VIOLETS OF EASTERN NORTH AMERICA,
Distributed by Ezra Brainerd, Middlebury, Vermont, 1910.

16. *Viola blanda* Willd.

See *Rhodora* vii. 245.

Moist humus in grove of sugar maples, Bristol, Vt.

E. Brainerd collector,

August 8, 1910.

VIOLETS OF EASTERN NORTH AMERICA,
Distributed by Ezra Brainerd, Middlebury, Vermont, 1910.

17. *Viola Brittoniana* Pollard.

Transplanted from peaty meadow along the Charles River, Dedham,
Mass., May 1909, *F. F. Forbes* donor.

Ex horto E. B. collector,

May 22 and August 23, 1910.

VIOLETS OF EASTERN NORTH AMERICA,
Distributed by Ezra Brainerd, Middlebury, Vermont, 1910.

18. *Viola Brittoniana* × *cucullata* House.

Bull. Torr. Club xxxii. 255, t. 17.

Transplanted from Springdale, N. J., May 1907; *Witmer Stone* donor.

Ex horto E. B. collector,

May 22, 1910.

VIOLETS OF EASTERN NORTH AMERICA,
Distributed by Ezra Brainerd, Middlebury, Vermont, 1910.

19. *Viola Brittoniana* × *cucullata* House.

Bull. Torr. Club xxxii. 255, t. 17; *V. notabilis* Bicknell, Torreyia iv. 131.

Transplanted from Springdale, N. J., May 1907; *W. Stone* donor.

Ex horto E. B. collector,

August 26, 1910.

VIOLETS OF EASTERN NORTH AMERICA,
Distributed by Ezra Brainerd, Middlebury, Vermont, 1910.

20. *Viola Brittoniana* × *cucullata* House.

Transplanted from Springdale, N. J., May 1907, *Stone*.

Stable offspring in third generation from hybrid, with buff seeds of
V. Brittoniana and uncut leaves of *V. cucullata*.

Sowing 658; ex horto E. B. collector.

Sept. 5, 1910.

VIOLETS OF EASTERN NORTH AMERICA,
Distributed by Ezra Brainerd, Middlebury, Vermont, 1910.

21. *Viola Brittoniana* × *fimbriatula* Dowell.

Bull. Torr. Club xxxvii. 172; cf. *Rhodora* viii. 51, t. 67. (*V. Mulfordae* Pollard.)

Transplanted from Hempstead Plains, N. Y., September 1904; *Miss Mulford* donor.

Ex horto E. B. collector,

May 16, 1910.

VIOLETS OF EASTERN NORTH AMERICA,
Distributed by Ezra Brainerd, Middlebury, Vermont, 1910.

22. *Viola Brittoniana* × *fimbriatula* Dowell.

Bull. Torr. Club xxxvii. 172; cf. *Rhodora* viii. 51, t. 67. (*V. Mulfordae* Pollard.)

Transplanted from Hempstead Plains, N. Y., September 1904; *Miss Mulford* donor.

Ex horto E. B. collector,

August 23, 1910.

VIOLETS OF EASTERN NORTH AMERICA,
Distributed by Ezra Brainerd, Middlebury, Vermont, 1910.

23. *Viola Brittoniana* × *papilionacea* Dowell.

Bull. Torr. Club xxxvii. 173, t. 14.

Transplanted from Staten Island, N. Y., May 1909; *Dowell* donor, no. 5658.

Sowing 662; ex horto E. B. collector,

September 8, 1910.

VIOLETS OF EASTERN NORTH AMERICA,
Distributed by Ezra Brainerd, Middlebury, Vermont, 1910.

24. *Viola canadensis* L.

Rocky woodlands, Middlebury, Vt.

E. Brainerd collector,

May 23, 1910.

VIOLETS OF EASTERN NORTH AMERICA,
Distributed by Ezra Brainerd, Middlebury, Vermont, 1910.

25. *Viola chalcosperma* Brainerd, n. sp.

Wet, shady borders of slow streams, Jacksonville, Fla.

E. Brainerd collector,

March 21, 1909.

VIOLETS OF EASTERN NORTH AMERICA,
Distributed by Ezra Brainerd, Middlebury, Vermont, 1910.

26. *Viola chalcosperma* Brainerd, n. sp.

Transplanted from Jacksonville, Fla., *Mrs. E. K. Comstock*, March 1907.

Sowing 495; ex horto E. B. collector,

July 14, 1910.

VIOLETS OF EASTERN NORTH AMERICA,
Distributed by Ezra Brainerd, Middlebury, Vermont, 1910.

27. *Viola chinensis* G. Don.

V. lancifolia of Britton Manual, not Thore; see *Rhodora* viii. 38.

Transplanted from Botanical garden, Bronx Park, N. Y., September 1905. Spontaneous there, and also now at Middlebury, Vt.

E. Brainerd collector,

July 28, 1910.

VIOLETS OF EASTERN NORTH AMERICA,
Distributed by Ezra Brainerd, Middlebury, Vermont, 1910.

28. Viola conspersa Reichenb.

Moist soil in partial shade, Middlebury, Vt.

E. Brainerd collector,

May 25, 1910.

VIOLETS OF EASTERN NORTH AMERICA,
Distributed by Ezra Brainerd, Middlebury, Vermont, 1910.

29. Viola conspersa Reichenb.

Form with flowers nearly white.

Moist soil in partial shade, Middlebury, Vt.

E. Brainerd collector,

May 25, 1910.

VIOLETS OF EASTERN NORTH AMERICA,
Distributed by Ezra Brainerd, Middlebury, Vermont, 1910.

30. Viola conspersa Reichenb.

Transplanted from Monroe Co. N. Y., June 1910; *Slavin* donor.

Ex horto E. B. collector,

August 31, 1910.

VIOLETS OF EASTERN NORTH AMERICA,
Distributed by Ezra Brainerd, Middlebury, Vermont, 1910.

31. *Viola conspersa* × *rostrata* Brainerd.

Transplanted from Plainfield, N. J., June 1906; *Miller* donor.

Ex horto E. B. collector,

May 6, 1910.

VIOLETS OF EASTERN NORTH AMERICA,
Distributed by Ezra Brainerd, Middlebury, Vermont, 1910.

32. *Viola cucullata* Ait.

Transplanted from low pasture land, Manchester, Vt., May 1905.
Spontaneous, Middlebury, Vt.

Ex horto E. B. collector,

May 19, 1910.

VIOLETS OF EASTERN NORTH AMERICA,
Distributed by Ezra Brainerd, Middlebury, Vermont, 1910.

33. *Viola cucullata* Ait.

Transplanted from Mt. Mitchell, N. C., November 1907; *Eggleston* donor.

Sowing 504; ex horto E. B. collector.

August 20, 1910.

VIOLETS OF EASTERN NORTH AMERICA,
Distributed by Ezra Brainerd, Middlebury, Vermont, 1910.

34. *Viola cucullata* × *fimbriatula* Brainerd.

Rhodora vi. 217; *V. Porteriana* Pollard, Bull. Torr. Club. xxiv. 404, t. 314.

Transplanted from moist pasture, base of mountain, Middlebury, Vt.,
May 1906.

Ex horto E. B. collector,

May 19, 1910.

VIOLETS OF EASTERN NORTH AMERICA,
Distributed by Ezra Brainerd, Middlebury, Vermont, 1910.

35. *Viola cucullata* × *fimbriatula* Brainerd.

Rhodora vi. 217; *V. Porteriana* Pollard, Bull. Torr. Club. xxiv. 404, t. 314.

Transplanted from moist pasture, base of mountain, Middlebury, Vt.
May 1906.

Ex horto E. B. collector,

August 7, 1910.

VIOLETS OF EASTERN NORTH AMERICA,
Distributed by Ezra Brainerd, Middlebury, Vermont, 1910.

36. *Viola cucullata* × *fimbriatula* Brainerd.

Transplanted from Wawa^W, Pa., May 1910; *F. W. Pennell* donor.

Ex horto E. B. collector,

August 18, 1910.

VIOLETS OF EASTERN NORTH AMERICA,
Distributed by Ezra Brainerd, Middlebury, Vermont, 1910.

37. *Viola cucullata* × *fimbriatula* Brainerd.

Transplanted from Oak Mt., Tryon, N. C., April 1910.

Ex horto E. B. collector.

August 23, 1910.

VIOLETS OF EASTERN NORTH AMERICA,
Distributed by Ezra Brainerd, Middlebury, Vermont, 1910.

38. *Viola cucullata* × *sagittata* Brainerd.

Rhodora viii. 52.

Transplanted from Montcalm, N. J., June 1907; *Vreeland* donor,
no. 186.

Ex horto E. B. collector.

May 19, 1910.

VIOLETS OF EASTERN NORTH AMERICA,
Distributed by Ezra Brainerd, Middlebury, Vermont, 1910.

39. *Viola cucullata* × *septentrionalis* Brainerd.

Rhodora vi. 220; *V. melissaefolia* Greene Pitt. v. 103.

Transplanted from a mountain pasture, Bristol, Vt., August 1904.

Ex horto E. B. collector,

May 19, 1910.

VIOLETS OF EASTERN NORTH AMERICA,
Distributed by Ezra Brainerd, Middlebury, Vermont, 1910.

40. *Viola cucullata* × *septentrionalis* Brainerd.

Rhodora vi. 22; *V. melissaeifolia* Greene, Pitt. v. 103.

Transplanted from moist pasture, base of mountain, Middlebury, Vt.,
May 1910.

Ex horto E. B. collector,

August 14, 1910.

VIOLETS OF EASTERN NORTH AMERICA,
Distributed by Ezra Brainerd, Middlebury, Vermont, 1910.

41. *Viola cucullata* × *sororia* Brainerd.

Rhodora vi. 222.

Transplanted from wet borders of stream from cold spring, Middle-
bury, Vt., May 1904.

Sowing 303; ex horto E. B. collector,

May 12, 1910.

VIOLETS OF EASTERN NORTH AMERICA,
Distributed by Ezra Brainerd, Middlebury, Vermont, 1910.

42. *Viola cucullata* × *sororia* Brainerd.

Rhodora vi. 222.

Transplanted from wet borders of stream from cold spring, Middle-
bury, Vt., May 1904.

Sowing 303; ex horto E. B. collector,

August 22, 1910.

VIOLETS OF EASTERN NORTH AMERICA,
Distributed by Ezra Brainerd, Middlebury, Vermont, 1910.

43. *Viola Egglestonii* Brainerd, n. sp.

Transplanted from limestone barrens, West Nashville, Tenn., May 1909; *Eggleston* donor.

Ex horto E. B. collector,

May 10, 1910.

VIOLETS OF EASTERN NORTH AMERICA,
Distributed by Ezra Brainerd, Middlebury, Vermont, 1910.

44. *Viola Egglestonii* Brainerd, n. sp.

Transplanted from limestone barrens, West Nashville, Tenn., May 1909; *Eggleston* donor.

Ex horto E. B. collector,

July 14, 1910.

VIOLETS OF EASTERN NORTH AMERICA,
Distributed by Ezra Brainerd, Middlebury, Vermont, 1910.

45. *Viola emarginata* (Nutt.) LeConte.

Moist fields, Agency Hill, near Muskogee, Okla.

E. Brainerd collector,

April 6, 1910.

VIOLETS OF EASTERN NORTH AMERICA,
Distributed by Ezra Brainerd, Middlebury, Vermont, 1910.

46. *Viola emarginata* (Nutt.) LeConte.

Transplanted from prairie near Muskogee, Okla., April 1908.

Sowing 529; ex horto E. B. collector,

August 28, 1910.

VIOLETS OF EASTERN NORTH AMERICA,
Distributed by Ezra Brainerd, Middlebury, Vermont, 1910.

47. *Viola emarginata* (Nutt.) LeConte.

Openings in forest of long-leaved pine, Seale, La.

E. Brainerd collector,

March 27, 1910.

VIOLETS OF EASTERN NORTH AMERICA,
Distributed by Ezra Brainerd, Middlebury, Vermont, 1910.

48. *Viola emarginata* (Nutt.) LeConte.

Transplanted from Tinicum, Pa., May 1907; *Stone*, donor.

Form with peduncles usually three-flowered, cultivated from selected seed for three generations.

Sowing 675; ex horto E. B. collector,

September 1, 1910.

VIOLETS OF EASTERN NORTH AMERICA,
Distributed by Ezra Brainerd, Middlebury, Vermont, 1910.

49. *Viola esculenta* Ell.

Wet borders of streams, Jacksonville, Fla.

E. Brainerd collector,

March 23, 1909.

VIOLETS OF EASTERN NORTH AMERICA,
Distributed by Ezra Brainerd, Middlebury, Vermont, 1910.

50. *Viola esculenta* Ell.

Wet borders of streams, Jacksonville, Fla.

E. Brainerd collector,

April 9, 1909.

VIOLETS OF EASTERN NORTH AMERICA,
Distributed by Ezra Brainerd, Middlebury, Vermont, 1910.

51. *Viola esculenta* Ell.

Transplanted from Jacksonville, Fla., April 1909.

Sowing 757; ex horto E. B. collector,

August 30, 1910.

VIOLETS OF EASTERN NORTH AMERICA,
Distributed by Ezra Brainerd, Middlebury, Vermont, 1910.

52. *Viola fimbriatula* J. E. Smith.

Form with uncut leaves.

Old stony pastures, Middlebury, Vt.

E. Brainerd collector,

May 12 and August 8, 1910.

VIOLETS OF EASTERN NORTH AMERICA,
Distributed by Ezra Brainerd, Middlebury, Vermont, 1910.

53. *Viola fimbriatula* J. E. Smith.

Form with leaves coarsely toothed at base.

Among shrubs, sandy shore of Lake Champlain, Burlington, Vt.

E. Brainerd collector,

July 6, 1909.

VIOLETS OF EASTERN NORTH AMERICA,
Distributed by Ezra Brainerd, Middlebury, Vermont, 1910.

54. *Viola fimbriatula* J. E. Smith.

Form with leaves incised at base.

Oak Mt., (alt. 760 m.) Tryon, N. C.

E. Brainerd collector,

April 21, 1910.

VIOLETS OF EASTERN NORTH AMERICA,
Distributed by Ezra Brainerd, Middlebury, Vermont, 1910.

55. *Viola fimbriatula* J. E. Smith.

Glabrous form; *V. amorphophylla* Pollard.

Oak Mt., Tryon, N. C., only known station; growing with no. 54, and differing from it only in lack of pubescence. Cf. also no. 37 from same station.

E. Brainerd collector,

April 21, 1910.

VIOLETS OF EASTERN NORTH AMERICA,
Distributed by Ezra Brainerd, Middlebury, Vermont, 1910.

56. *Viola fimbriatula* × *septentrionalis* Brain'd.

Rhodora vi. 215, t. 58.

Transplanted from moist pasture, base of mountain, Middlebury, Vt., May 1906.

Ex horto E. B. collector,

May 17, 1910.

VIOLETS OF EASTERN NORTH AMERICA,
Distributed by Ezra Brainerd, Middlebury, Vermont, 1910.

57. *Viola fimbriatula* × *septentrionalis* Brain'd.

Rhodora vi. 215, t. 58.

Transplanted from pasture land, Middlebury, Vt., May 1910.

Ex horto E. B. collector,

August 3, 1910.

VIOLETS OF EASTERN NORTH AMERICA,
Distributed by Ezra Brainerd, Middlebury, Vermont, 1910.

58. *Viola fimbriatula* × *sororia* Brainerd.

Rhodora vi. 218.

Transplanted from shady ledges of old pasture, Middlebury, Vt.,
May 1906.

Ex horto E. B. collector.

May 17, 1910.

VIOLETS OF EASTERN NORTH AMERICA,
Distributed by Ezra Brainerd, Middlebury, Vermont, 1910.

59. *Viola fimbriatula* × *sororia* Brainerd.

Rhodora vi. 218.

Transplanted from shady ledges of old pasture, Middlebury, Vt.,
May 1910.

Ex horto E. B. collector,

August 6, 1910.

VIOLETS OF EASTERN NORTH AMERICA,
Distributed by Ezra Brainerd, Middlebury, Vermont, 1910.

60. *Viola floridana* Brainerd, n. sp.

In moist rich woodland, Jacksonville, Fla.

E. Brainerd collector,

March 13 and 22, 1907.

VIOLETS OF EASTERN NORTH AMERICA,
Distributed by Ezra Brainerd, Middlebury, Vermont, 1910.

61. *Viola floridana* Brainerd.

Transplanted from Jacksonville, Fla., March 1909.

Sowing 758; ex horto E. B. collector,

September 7, 1910.

VIOLETS OF EASTERN NORTH AMERICA,
Distributed by Ezra Brainerd, Middlebury, Vermont, 1910.

62. *Viola hastata* Michx.

Thickets, Tryon, N. C.

E. Brainerd collector,

April 14, 1909.

VIOLETS OF EASTERN NORTH AMERICA,
Distributed by Ezra Brainerd, Middlebury, Vermont, 1910.

63. *Viola hastata* Michx.

Thickets, Tryon, N. C.

E. Brainerd collector,

April 21, 1910.

VIOLETS OF EASTERN NORTH AMERICA,
Distributed by Ezra Brainerd, Middlebury, Vermont, 1910.

64. *Viola hirsutula* Brainerd.

Rhodora ix. 96.

Rich open woodland, Tryon, N. C.

E. Brainerd collector,

April 14, 1909.

VIOLETS OF EASTERN NORTH AMERICA,
Distributed by Ezra Brainerd, Middlebury, Vermont, 1910.

65. *Viola hirsutula* Brainerd.

Rhodora ix. 96.

Pasture land under scrub oaks, Decatur, Ala.

E. Brainerd collector,

April 18, 1910.

VIOLETS OF EASTERN NORTH AMERICA,
Distributed by Ezra Brainerd, Middlebury, Vermont, 1910.

66. *Viola hirsutula* × *papilionacea* Brainerd.

Rhodora ix. 211.

Transplanted from Sherwood, Pa., September 1905; *Stone* donor.

Sowing 338; ex horto E. B. collector,

May 30, 1910.

VIOLETS OF EASTERN NORTH AMERICA,
Distributed by Ezra Brainerd, Middlebury, Vermont, 1910.

67. *Viola incognita* Brainerd.

Rhodora vii. 248.

Along old wood-roads on mountains, Middlebury, Vt.

E. Brainerd collector,

May 30, 1906.

VIOLETS OF EASTERN NORTH AMERICA,
Distributed by Ezra Brainerd, Middlebury, Vermont, 1910.

68. *Viola incognita* Brainerd.

Rhodora vii. 248.

Along old wood-roads on mountains, Middlebury, Vt.

E. Brainerd collector,

September 15, 1906.

VIOLETS OF EASTERN NORTH AMERICA,
Distributed by Ezra Brainerd, Middlebury, Vermont, 1910.

69. *Viola incognita* Brainerd.

Rhodora vii. 248.

Transplanted from Chipman Hill, Middlebury, Vt., May 1908.

Ex horto E. B. collector,

August 18, 1910.

VIOLETS OF EASTERN NORTH AMERICA,
Distributed by Ezra Brainerd, Middlebury, Vermont, 1910.

70. Viola lanceolata L.

Transplanted from Staten Island, N. Y., May 1907, *Dowell* donor.

Ex horto E. B. collector,

May 26, 1910.

VIOLETS OF EASTERN NORTH AMERICA,
Distributed by Ezra Brainerd, Middlebury, Vermont, 1910.

71. Viola lanceolata L.

Transplanted from Staten Island, N. Y., May 1907, *Dowell* donor.

Ex horto E. B. collector,

August 21, 1910.

VIOLETS OF EASTERN NORTH AMERICA,
Distributed by Ezra Brainerd, Middlebury, Vermont, 1910.

72. Viola Langloisii Greene.

Along shady bayous, Crowley, La.

E. Brainerd collector,

March 22, 1910.

VIOLETS OF EASTERN NORTH AMERICA,
Distributed by Ezra Brainerd, Middlebury, Vermont, 1910.

73. *Viola Langloisii* Greene.

Transplanted from Crowley, La., March 1908.

Sowing 513; ex horto E. B. collector,

August 18, 1910.

VIOLETS OF EASTERN NORTH AMERICA,
Distributed by Ezra Brainerd, Middlebury, Vermont, 1910

**74. *Viola Langloisii* Greene,
var. *pedatiloba* Brainerd, n. var.**

Along shady bayous, Crowley, La.

E. Brainerd collector,

March 25, 1910.

VIOLETS OF EASTERN NORTH AMERICA,
Distributed by Ezra Brainerd, Middlebury, Vermont, 1910.

75. *Viola latiuscula* Greene.

Dry open woodland, Salisbury, Vt.

E. Brainerd collector,

May 29, 1910.

VIOLETS OF EASTERN NORTH AMERICA,
Distributed by Ezra Brainerd, Middlebury, Vermont, 1910.

76. *Viola latiuscula* Greene.

Transplanted from Falconer, N. Y., May 1910; *Slavin* donor.
Ex horto E. B. collector, August 3, 1910.

VIOLETS OF EASTERN NORTH AMERICA,
Distributed by Ezra Brainerd, Middlebury, Vermont, 1910.

77. *Viola Lovelliana* Brainerd, n. sp.

Hillocks under young pines, Crowley, La.
E. Brainerd collector, March 25, 1910.

VIOLETS OF EASTERN NORTH AMERICA,
Distributed by Ezra Brainerd, Middlebury, Vermont, 1910.

78. *Viola Lovelliana* Brainerd, n. sp.

Transplanted from Crowley, La., March 1908.
Sowing 536; ex horto E. B. collector, September 11, 1909.

VIOLETS OF EASTERN NORTH AMERICA,
Distributed by Ezra Brainerd, Middlebury, Vermont, 1910.

79. Viola Lovelliana Brainerd.

Under deciduous trees on dry knolls, Mansfield, La.

E. Brainerd collector,

March 29, 1910.

VIOLETS OF EASTERN NORTH AMERICA,
Distributed by Ezra Brainerd, Middlebury, Vermont, 1910.

80. Viola Lovelliana Brainerd.

Open woods of dwarf oak, near Muskogee, Okla.

E. Brainerd collector,

April 5, 1910.

VIOLETS OF EASTERN NORTH AMERICA,
Distributed by Ezra Brainerd, Middlebury, Vermont, 1910.

81. Viola missouriensis Greene.

Flood plains of Arkansas River, near Muskogee, Okla.

E. Brainerd collector,

March 31, 1908.

VIOLETS OF EASTERN NORTH AMERICA,
Distributed by Ezra Brainerd, Middlebury, Vermont, 1910.

82. *Viola missouriensis* Greene.

Flat land along Flower Creek, near Ft. Gibson, Okla.

E. Brainerd collector,

April 13, 1910.

VIOLETS OF EASTERN NORTH AMERICA,
Distributed by Ezra Brainerd, Middlebury, Vermont, 1910.

83. *Viola nephrophylla* Greene.

Transplanted from Providence Island, Vt., July 1905.

Sowing 221; ex horto E. B. collector,

May 31, 1910.

VIOLETS OF EASTERN NORTH AMERICA,
Distributed by Ezra Brainerd, Middlebury, Vermont, 1910.

84. *Viola nephrophylla* Greene.

Pitt. iii. 144; Rhodora vii. 3-6.

Rocky shores of Lake Champlain, Providence Island, Vt.

E. Brainerd collector,

July 4 and 22, 1905.

VIOLETS OF EASTERN NORTH AMERICA,
Distributed by Ezra Brainerd, Middlebury, Vermont, 1910.

85. *Viola nephrophylla* Greene.

Form with buff seeds: see Am. Nat. xlv. 233.

Transplanted from Lake Nemahbin, Wis., May 1907; *Dr. Ogden*
donor.

Sowing 514; ex horto E. B. collector,

May 20, 1910.

VIOLETS OF EASTERN NORTH AMERICA,
Distributed by Ezra Brainerd, Middlebury, Vermont, 1910.

86. *Viola nephrophylla* Greene.

Form with buff seeds: see Am. Nat. xlv. 233.

Transplanted from Lake Nemahbin, Wis., May 1907; *Dr. Ogden*
donor.

Sowing 514; ex horto E. B. collector,

August 6, 1910.

VIOLETS OF EASTERN NORTH AMERICA,
Distributed by Ezra Brainerd, Middlebury, Vermont, 1910.

87. *Viola nephrophylla* × *papilionacea* Brain'd.

Transplanted from original prairie, Racine Co., Wis., June 1909;
Dr. Ogden donor.

Ex horto E. B. collector,

May 28, 1910.

VIOLETS OF EASTERN NORTH AMERICA,
Distributed by Ezra Brainerd, Middlebury, Vermont, 1910.

88. *Viola nephrophylla* × *papilionacea* Brain'd.

Transplanted from original prairie, Racine Co., Wis., June 1909;
Dr. Ogden donor.

Sowing 792; ex horto E. B. collector, September 10, 1910.

VIOLETS OF EASTERN NORTH AMERICA,
Distributed by Ezra Brainerd, Middlebury, Vermont, 1910.

89. *Viola novae-angliae* House.

Rhodora vi. 226, t. 59; and vii. 1-3.

Transplanted from Mercer, Wis., June 1909; *Dr. Ogden* donor.
"On a small sand island."

Sowing 796; ex horto E. B. collector, August 26, 1910.

VIOLETS OF EASTERN NORTH AMERICA,
Distributed by Ezra Brainerd, Middlebury, Vermont, 1910.

90. *Viola Nuttallii* Pursh.

Gravelly slope, Kebler Pass, (alt. 3050 m.) Gunnison Co., Colo.

W. W. Eggleston collector, June 15, 1910.

VIOLETS OF EASTERN NORTH AMERICA,
Distributed by Ezra Brainerd, Middlebury, Vermont, 1910.

91. *Viola Nuttallii* Pursh.

Gravelly slope, Kebler Pass, (alt. 3050 m.) Gunnison Co., Colo.

W. W. Eggleston collector,

June 29, 1910.

VIOLETS OF EASTERN NORTH AMERICA,
Distributed by Ezra Brainerd, Middlebury, Vermont, 1910.

92. *Viola odorata* L.

Cultivated, Middlebury, Vt.

E. Brainerd collector,

April 29, 1910.

VIOLETS OF EASTERN NORTH AMERICA,
Distributed by Ezra Brainerd, Middlebury, Vermont, 1910.

93. *Viola odorata* L.

Cultivated, Middlebury, Vt.

E. Brainerd collector,

June 4, 1910.

VIOLETS OF EASTERN NORTH AMERICA,
Distributed by Ezra Brainerd, Middlebury, Vermont, 1910.

94. *Viola pallens* (Banks) Brainerd.

Rhodora vii. 245.

Springy lands and borders of cold brooks, *Middlebury, Vt.*

E. Brainerd collector,

May 1, 1910.

VIOLETS OF EASTERN NORTH AMERICA,
Distributed by Ezra Brainerd, Middlebury, Vermont, 1910.

95. *Viola pallens* (Banks) Brainerd.

Rhodora vii. 245.

Springy lands and borders of cold brooks, *North Hero, Vt.*

E. Brainerd collector,

August 5, 1904.

VIOLETS OF EASTERN NORTH AMERICA,
Distributed by Ezra Brainerd, Middlebury, Vermont, 1910.

96. *Viola palmata* L.

Transplanted from Kutztown, Pa., May 1906; *Eggleson* donor.

Sowing 515; ex horto E. B. collector,

May 28, 1910.

VIOLETS OF EASTERN NORTH AMERICA,
Distributed by Ezra Brainerd, Middlebury, Vermont, 1910.

97. *Viola palmata* L.

Transplanted from Bronx Park Garden, N. Y., September 1905.
Brought to Bronx Park from Orange, N. J., by *Miss Angell*, May 1905.

Ex horto E. B. collector,

August 29, 1910.

VIOLETS OF EASTERN NORTH AMERICA,
Distributed by Ezra Brainerd, Middlebury, Vermont, 1910.

98. *Viola palmata* L.

Transplanted from Lake Co., Fl., September 1907; *Mrs. Chase* donor.

Sowing 519; ex horto E. B. collector,

August 5, 1910.

VIOLETS OF EASTERN NORTH AMERICA,
Distributed by Ezra Brainerd, Middlebury, Vermont, 1910.

99. *Viola palmata* L.

Form of the Central West; *V. perpensa* Greene, Leaflets i. 184.

Transplanted from garden of *F. F. Forbes*, Brookline, Mass. August 1907.
Sent from Port Huron, Mich., by *C. K. Dodge*.

Ex horto E. B. collector,

June 17, 1910.

VIOLETS OF EASTERN NORTH AMERICA,
Distributed by Ezra Brainerd, Middlebury, Vermont, 1910.

100. *Viola palmata* L.

Form of the Central West; *V. perpensa* Greene, Leaflets i. 184.

Transplanted from Sea Breeze, N. Y., July 1910; *Slavin* donor.

Ex horto E. B. collector,

September 3, 1910.

VIOLETS OF EASTERN NORTH AMERICA,
Distributed by Ezra Brainerd, Middlebury, Vermont, 1910.

101. *Viola palmata* × *papilionacea* Brainerd.

Transplanted from Plainfield, N. J., May 1906; *Miller* donor.

Ex horto E. B. collector,

May 13, 1910.

VIOLETS OF EASTERN NORTH AMERICA,
Distributed by Ezra Brainerd, Middlebury, Vermont, 1910.

102. *Viola palmata* × *papilionacea* Brainerd.

Transplanted from Plainfield, N. J., May 1906; *Miller* donor.

Ex horto E. B. collector,

August 24, 1910.

VIOLETS OF EASTERN NORTH AMERICA,
Distributed by Ezra Brainerd, Middlebury, Vermont, 1910.

103. *Viola papilionacea* Pursh.

Transplanted from Glastonbury, Conn., September 1903; *Bissell*
donor.

Sowing 520; ex horto E. B. collector,

May 22, 1910.

VIOLETS OF EASTERN NORTH AMERICA,
Distributed by Ezra Brainerd, Middlebury, Vermont, 1910.

104. *Viola papilionacea* Pursh.

Transplanted from Glastonbury, Conn., September 1903; *Bissell*
donor.

Sowing 520; ex horto E. B. collector,

August 27, 1910.

VIOLETS OF EASTERN NORTH AMERICA,
Distributed by Ezra Brainerd, Middlebury, Vermont, 1910.

105. *Viola papilionacea* Pursh.

Transplanted from Spring Valley, N. Y., September 1909; *Miss*
Kittredge donor.

Sowing 593; ex horto E. B. collector,

September 4, 1910.

VIOLETS OF EASTERN NORTH AMERICA,
Distributed by Ezra Brainerd, Middlebury, Vermont, 1910.

106. *Viola papilionacea* Pursh.

Transplanted from Biltmore, N. C., May 1909; *Eggleston* donor.

Sowing 765; ex horto E. B. collector, September 10, 1910.

VIOLETS OF EASTERN NORTH AMERICA,
Distributed by Ezra Brainerd, Middlebury, Vermont, 1910.

107. *Viola papilionacea* Pursh.

Transplanted from Yorkville, Ill., May 1909; *Miss Pollard* donor.

Sowing 692; ex horto E. B. collector, September 9, 1910.

VIOLETS OF EASTERN NORTH AMERICA,
Distributed by Ezra Brainerd, Middlebury, Vermont, 1910.

108. *Viola papilionacea* Pursh.

Transplanted from Mr. Brewster's garden, Cambridge, Mass., May 1909; *Deane* donor.

Notable for lack of violet pigment in corolla, capsule, and seed.

Sowing 694; ex horto E. B. collector, September 21, 1910.

VIOLETS OF EASTERN NORTH AMERICA,
Distributed by Ezra Brainerd, Middlebury, Vermont, 1910.

109. *Viola papilionacea* × *pedatifida* Brain'd.

Transplanted from Yorkville, Ill., May 1905; *Miss Pollard* donor.

Ex horto E. B. collector,

May 14, 1910.

VIOLETS OF EASTERN NORTH AMERICA,
Distributed by Ezra Brainerd, Middlebury, Vermont, 1910.

110. *Viola papilionacea* × *pedatifida* Brain'd.

Transplanted from Yorkville, Ill., May 1905; *Miss Pollard* donor.

Ex horto E. B. collector,

August 25, 1910.

VIOLETS OF EASTERN NORTH AMERICA,
Distributed by Ezra Brainerd, Middlebury, Vermont, 1910.

111. *Viola papilionacea* × *pedatifida* Brain'd.

Transplanted from Yorkville, Ill., May 1905; *Miss Pollard* donor.
Stable offspring, third generation from hybrid, having cut leaves like
those of *V. pedatifida*.

Sowing 612; ex horto E. B. collector,

May 15, 1910.

VIOLETS OF EASTERN NORTH AMERICA,
Distributed by Ezra Brainerd, Middlebury, Vermont, 1910.

115. *Viola pectinata* Bicknell.

Transplanted from peaty meadow along the Charles River, Dedham,
Mass., May 1909, *F. F. Forbes*, donor.

Ex horto E. B. collector,

May 22 and August 28, 1910.

VIOLETS OF EASTERN NORTH AMERICA,
Distributed by Ezra Brainerd, Middlebury, Vermont, 1910.

116. *Viola pedata* L.

Transplanted from Glen Alpine, D. C., April 1908.

Ex horto E. B. collector,

May 18, 1910.

VIOLETS OF EASTERN NORTH AMERICA,
Distributed by Ezra Brainerd, Middlebury, Vermont, 1910.

117. *Viola pedata* L. var. *lineariloba* DC.

Openings in forest of long-leaved pine, Seale, La.

E. Brainerd collector,

March 27, 1910.

VIOLETS OF EASTERN NORTH AMERICA,
Distributed by Ezra Brainerd, Middlebury, Vermont, 1910.

118. *Viola pedata* L. var. *lineariloba* DC.

Sterile hills of scrub oak, Mena, Ark.

E. Brainerd collector,

April 1, 1910.

VIOLETS OF EASTERN NORTH AMERICA,
Distributed by Ezra Brainerd, Middlebury, Vermont, 1910.

119. *Viola pedata* L. var. *lineariloba* DC.

Sterile open woodland, Westville, Okla.

E. Brainerd collector,

April 7, 1910.

VIOLETS OF EASTERN NORTH AMERICA,
Distributed by Ezra Brainerd, Middlebury, Vermont, 1910.

120. *Viola pedatifida* G. Don.

Prairies, near Muskogee, Okla.

E. Brainerd collector,

April 11, 1910.

VIOLETS OF EASTERN NORTH AMERICA,
Distributed by Ezra Brainerd, Middlebury, Vermont, 1910.

121. *Viola pedatifida* × *sororia* Brainerd.

Transplanted from untilled prairie along railway, Galva, Ill., June 1909; *V. H. Chase* donor, no. 1954.

Ex horto E. B. collector,

May 16, 1910.

VIOLETS OF EASTERN NORTH AMERICA,
Distributed by Ezra Brainerd, Middlebury, Vermont, 1910.

122. *Viola pedatifida* × *sororia* Brainerd.

Transplanted from Galva, Ill., June 1909; *V. H. Chase* donor, no. 1954.
Two offspring, segregating as respects leaf incision.

Sowing 784; ex horto E. B. collector,

September 14, 1910.

VIOLETS OF EASTERN NORTH AMERICA,
Distributed by Ezra Brainerd, Middlebury, Vermont, 1910.

123. *Viola primulifolia* L. var. *villosa* A. Eaton.

? var. *australis* Pollard, Bot. Gaz. xxvi. 342.

Wet woods along a small brook, near Biloxi, Miss.

E. Brainerd collector,

March 13, 1910.

VIOLETS OF EASTERN NORTH AMERICA,
Distributed by Ezra Brainerd, Middlebury, Vermont, 1910.

124. *Viola primulifolia* L. var. *villosa* A. Eaton.
? var. *australis* Pollard, Bot. Gaz. xxvi. 342.

Transplanted from Biloxi, Miss., March 1910; *Tracy* donor.

Ex horto E. B. collector,

August 19, 1910.

VIOLETS OF EASTERN NORTH AMERICA,
Distributed by Ezra Brainerd, Middlebury, Vermont, 1910.

125. *Viola primulifolia* L. var. *villosa* A. Eaton.
? var. *australis* Pollard, Bot. Gaz. xxvi. 342.

Along a brook in a pine forest, Seale, La.

E. Brainerd collector,

March 27, 1910.

VIOLETS OF EASTERN NORTH AMERICA,
Distributed by Ezra Brainerd, Middlebury, Vermont, 1910.

126. *Viola pubescens* Ait

Dry woods in leaf mould, Middlebury, Vt.

E. Brainerd collector,

May 14, 1910.

VIOLETS OF EASTERN NORTH AMERICA,
Distributed by Ezra Brainerd, Middlebury, Vermont, 1910.

127. *Viola pubescens* Ait

Dry woods in leaf mould, Middlebury, Vt.

E. Brainerd collector,

June 8, 1910.

VIOLETS OF EASTERN NORTH AMERICA,
Distributed by Ezra Brainerd, Middlebury, Vermont, 1910.

128. *Viola Rafinesquii* Greene.

Grove, Hyde Park, near Muskogee, Okla.

E. Brainerd collector,

April 4, 1910.

VIOLETS OF EASTERN NORTH AMERICA,
Distributed by Ezra Brainerd, Middlebury, Vermont, 1910.

129. *Viola renifolia* Gray.

Moist humus at base of wooded hill, Salisbury, Vt.

E. Brainerd collector,

May 15, 1906.

VIOLETS OF EASTERN NORTH AMERICA,
Distributed by Ezra Brainerd, Middlebury, Vermont, 1910.

130. *Viola renifolia* Gray.

Moist humus at base of wooded hill, Salisbury, Vt.

E. Brainerd collector,

July 2, 1910.

VIOLETS OF EASTERN NORTH AMERICA,
Distributed by Ezra Brainerd, Middlebury, Vermont, 1910.

131. *Viola renifolia* Gray.

Form with leaves glabrous above: *V. Brainerdii* Greene, Pitt. v. 89.

Moist rich woods on mountain side, Salisbury, Vt.

E. Brainerd collector,

May 6 and August 14, 1905.

VIOLETS OF EASTERN NORTH AMERICA,
Distributed by Ezra Brainerd, Middlebury, Vermont, 1910.

132. *Viola rosacea* Brainerd., n. sp.

Well drained open woodland, near Biloxi, Miss.

E. Brainerd collector,

March 19, 1910.

VIOLETS OF EASTERN NORTH AMERICA,
Distributed by Ezra Brainerd, Middlebury, Vermont, 1910.

133. *Viola rosacea* Brainerd, n. sp.

Transplanted from near Biloxi, Miss., March 1910.

Ex horto E. B. collector,

August 24, 1910.

VIOLETS OF EASTERN NORTH AMERICA,
Distributed by Ezra Brainerd, Middlebury, Vermont, 1910.

134. *Viola rosacea* Brainerd.

Well drained open woodland near Fair-ground, Crowley, La.

E. Brainerd collector,

March 21, 1908.

VIOLETS OF EASTERN NORTH AMERICA,
Distributed by Ezra Brainerd, Middlebury, Vermont, 1910.

135. *Viola rostrata* Pursh.

Shaded hillsides, Middlebury, Vt.

E. Brainerd collector,

May 1 and 8, 1910.

VIOLETS OF EASTERN NORTH AMERICA,
Distributed by Ezra Brainerd, Middlebury, Vermont, 1910.

136. *Viola rotundifolia* Michx.

Cold rich woods, Salisbury, Vt.

E. Brainerd collector,

May 15, 1908.

VIOLETS OF EASTERN NORTH AMERICA,
Distributed by Ezra Brainerd, Middlebury, Vermont, 1910.

137. *Viola rotundifolia* Michx.

Cold rich woods, Bristol, Vt.

E. Brainerd collector,

August 8, 1910.

VIOLETS OF EASTERN NORTH AMERICA,
Distributed by Ezra Brainerd, Middlebury, Vermont, 1910.

138. *Viola Rydbergii* Greene.

Pitt. v. 27.

Transplanted from Bronx Park Garden, N. Y., September 1905; sent
from Boulder, Colo., by *D. M. Andrews*, 1898.
Spreading widely by underground stolons.

Ex horto E. B. collector,

May 6, 1910.

138. *Viola rugulosa* Greene -
(*V. Rydbergii* Greene)
Like Ezra Brainerd, Feb. 5, 1912.

VIOLETS OF EASTERN NORTH AMERICA,
Distributed by Ezra Brainerd, Middlebury, Vermont, 1910.

139. Viola sagittata Ait.

Open woodland, Crowley, La.

E. Brainerd collector,

March 22, 1910.

VIOLETS OF EASTERN NORTH AMERICA,
Distributed by Ezra Brainerd, Middlebury, Vermont, 1910.

140. Viola sagittata Ait.

Moist pasture under bushes, Mena, Ark.

E. Brainerd collector,

April 1, 1910.

VIOLETS OF EASTERN NORTH AMERICA,
Distributed by Ezra Brainerd, Middlebury, Vermont, 1910.

141. Viola sagittata Ait.

Transplanted from Paducah, Ky., June 1909; *Eggleston* donor.

Sowing 774; ex horto E. B. collector,

August 24, 1910.

VIOLETS OF EASTERN NORTH AMERICA,
Distributed by Ezra Brainerd, Middlebury, Vermont, 1910.

142. *Viola sagittata* × *sororia* Brainerd.

Transplanted from near Milwaukee, Wis., May 1907; *Dr. Ogden* donor.

Sowing 631; ex horto E. B. collector, May 11, 1910.

VIOLETS OF EASTERN NORTH AMERICA,
Distributed by Ezra Brainerd, Middlebury, Vermont, 1910.

143. *Viola sagittata* × *sororia* Brainerd.

Transplanted from near Milwaukee, Wis., May 1907; *Dr. Ogden* donor.

Sowing 631; ex horto E. B. collector, August 22, 1910.

VIOLETS OF EASTERN NORTH AMERICA,
Distributed by Ezra Brainerd, Middlebury, Vermont, 1910.

144. *Viola scabriuscula* Schwein.

V. eriocarpa Schwein., Am. Jour. Sci. v. 75.

Grove on flood plain of Arkansas River, near Muskogee, Okla.

E. Brainerd collector, April 4, 1910.

VIOLETS OF EASTERN NORTH AMERICA,
Distributed by Ezra Brainerd, Middlebury, Vermont, 1910.

145. *Viola scabriuscula* Schwein.

V. eriocarpa Schwein., Am. Jour. Sci. v. 75.

Wooded banks of Flower Creek, near Ft. Gibson, Okla.

E. Brainerd collector,

April 12, 1910.

VIOLETS OF EASTERN NORTH AMERICA,
Distributed by Ezra Brainerd, Middlebury, Vermont, 1910.

146. *Viola scabriuscula* Schwein.

Form with glabrous capsules.

Moist clay soil in partial shade, Middlebury, Vt.

E. Brainerd collector,

May 14, 1910.

VIOLETS OF EASTERN NORTH AMERICA,
Distributed by Ezra Brainerd, Middlebury, Vermont, 1910.

147. *Viola scabriuscula* Schwein.

Form with glabrous capsules.

Moist clay soil, in partial shade, Middlebury, Vt.

E. Brainerd collector,

June 6, 1910.

VIOLETS OF EASTERN NORTH AMERICA,
Distributed by Ezra Brainerd, Middlebury, Vermont, 1910.

148. Viola Selkirkii Pursh.

Shaded ravine at base of mountain, Middlebury, Vt.

E. Brainerd collector,

May 1, 1910.

VIOLETS OF EASTERN NORTH AMERICA,
Distributed by Ezra Brainerd, Middlebury, Vermont, 1910.

149. Viola Selkirkii Pursh.

Shaded ravine at base of mountain, Middlebury, Vt.

E. Brainerd collector,

May 23, 1905.

VIOLETS OF EASTERN NORTH AMERICA,
Distributed by Ezra Brainerd, Middlebury, Vermont, 1910.

150. Viola septemloba LeConte.

Moist open pineland, between DeLand and Deep Creek, Fla.

E. Brainerd collector,

March 28, 1909.

VIOLETS OF EASTERN NORTH AMERICA,
Distributed by Ezra Brainerd, Middlebury, Vermont, 1910.

151. *Viola septemloba* LeConte.

Open forest of pine, Gonzalez, near Pensacola, Fla.

E. Brainerd collector,

March 16, 1907.

VIOLETS OF EASTERN NORTH AMERICA,
Distributed by Ezra Brainerd, Middlebury, Vermont, 1910.

152. *Viola septemloba* LeConte.

Open forest of pine, near Biloxi, Miss.

E. Brainerd collector,

March 18, 1910.

VIOLETS OF EASTERN NORTH AMERICA,
Distributed by Ezra Brainerd, Middlebury, Vermont, 1910.

153. *Viola septemloba* LeConte.

Three-lobed form; *V. vicinalis* Greene, Pitt. iv. 9.

Cleared pine land, Ten Mile, S. C.

E. Brainerd collector,

March 25, 1907.

VIOLETS OF EASTERN NORTH AMERICA,
Distributed by Ezra Brainerd, Middlebury, Vermont, 1910.

154. *Viola septentrionalis* Greene.

Gravelly bank, edge of woods, Bristol, Vt.

E. Brainerd collector,

May 8, 1910.

VIOLETS OF EASTERN NORTH AMERICA,
Distributed by Ezra Brainerd, Middlebury, Vermont, 1910.

155. *Viola septentrionalis* Greene.

Thicket at summit of Chipman Hill, Middlebury, Vt.

E. Brainerd collector,

May 14, 1910.

VIOLETS OF EASTERN NORTH AMERICA,
Distributed by Ezra Brainerd, Middlebury, Vermont, 1910.

156. *Viola septentrionalis* Greene.

Roadside under young birches, Middlebury, Vt.

E. Brainerd collector,

June 26, 1910.

VIOLETS OF EASTERN NORTH AMERICA,
Distributed by Ezra Brainerd, Middlebury, Vermont, 1910.

157. *Viola septentrionalis* × *sororia* Brainerd.

Transplanted from edge of cold brook, Middlebury, Vt., May 1905.

Sowing 632; ex horto E. B. collector, May 12 and August 29, 1910.

VIOLETS OF EASTERN NORTH AMERICA,
Distributed by Ezra Brainerd, Middlebury, Vermont, 1910.

158. *Viola sororia* Willd.

Open meadow in clay soil, Middlebury, Vt.

E. Brainerd collector,

May 12, 1910.

VIOLETS OF EASTERN NORTH AMERICA,
Distributed by Ezra Brainerd, Middlebury, Vermont, 1910.

159. *Viola sororia* Willd.

Moist thicket near mountain, Middlebury, Vt.

E. Brainerd collector,

July 31, 1903.

VIOLETS OF EASTERN NORTH AMERICA,
Distributed by Ezra Brainerd, Middlebury, Vermont, 1910.

160. Viola sororia Willd.

Transplanted from Yorkville, Ill., May 1909; *Miss Pollard* donor.

Sowing 707; ex horto E. B. collector, August 31, 1910.

VIOLETS OF EASTERN NORTH AMERICA,
Distributed by Ezra Brainerd, Middlebury, Vermont, 1910.

161. Viola sororia Willd.

Form with white flowers,

Transplanted from garden, Northampton, Mass., May 1905; *Mrs. Terry* donor.

Sowing 249; ex horto E. B. collector, May 23, 1910.

VIOLETS OF EASTERN NORTH AMERICA,
Distributed by Ezra Brainerd, Middlebury, Vermont, 1910.

162. Viola Stoneana House.

Bull. Torr. Club. xxxii. 253, t. 16.

Transplanted from Kennett Square, Pa. (type station), September 1906.

Ex horto E. B. collector, May 23, 1910.

VIOLETS OF EASTERN NORTH AMERICA,
Distributed by Ezra Brainerd, Middlebury, Vermont, 1910.

163. Viola Stoneana House.

Bull. Torr. Club. xxxii, 253, t. 16.

Transplanted from Brookland, D. C., May 1907; *Holm* donor.

Ex horto E. B. collector,

August 10, 1910.

VIOLETS OF EASTERN NORTH AMERICA,
Distributed by Ezra Brainerd, Middlebury, Vermont, 1910.

164. Viola striata Ait.

Rich woodland, Oak Mt., Tryon, N. C.

E. Brainerd collector,

April 21, 1910.

VIOLETS OF EASTERN NORTH AMERICA,
Distributed by Ezra Brainerd, Middlebury, Vermont, 1910.

165. Viola striata Ait.

Transplanted from garden, Northampton, Mass., May 1906; *Mrs. Terry* donor.

E. Brainerd collector,

October 1, 1910.

VIOLETS OF EASTERN NORTH AMERICA,
Distributed by Ezra Brainerd, Middlebury, Vermont, 1910.

166. *Viola triloba* Schwein.

Wooded ledge of limestone, Orwell, Vt.; most northerly station known.

E. Brainerd collector,

May 14, 1904.

VIOLETS OF EASTERN NORTH AMERICA,
Distributed by Ezra Brainerd, Middlebury, Vermont, 1910.

167. *Viola triloba* Schwein.

Wooded ledge of limestone, Orwell, Vt.; most northerly station known.
Some capsules stung by gallflies; see *Rhodora* vi. 15, par. 3.

E. Brainerd collector,

July 30, 1905.

VIOLETS OF EASTERN NORTH AMERICA,
Distributed by Ezra Brainerd, Middlebury, Vermont, 1910.

168. *Viola triloba* Schwein.

Transplanted from Orwell, Vt., July 1905.

Sowing 532; ex horto E. B. collector,

June 14, 1910.

VIOLETS OF EASTERN NORTH AMERICA,
Distributed by Ezra Brainerd, Middlebury, Vermont, 1910.

169. *Viola triloba*, var. *dilatata* (Ell.) Brainerd.
V. falcata Greene.

Rich woodland, Crowley, La.

E. Brainerd collector,

March 23, 1910.

VIOLETS OF EASTERN NORTH AMERICA,
Distributed by Ezra Brainerd, Middlebury, Vermont, 1910.

170. *Viola triloba*, var. *dilatata* (Ell.) Brainerd.
V. falcata Greene.

In groves of deciduous trees, Mansfield, La.

E. Brainerd collector,

March 28, 1910.

VIOLETS OF EASTERN NORTH AMERICA,
Distributed by Ezra Brainerd, Middlebury, Vermont, 1910.

171. *Viola triloba*, var. *dilatata* (Ell.) Brainerd.
V. falcata Greene.

Field of gravel and dead leaves, under shrubs, Mena, Ark.

E. Brainerd collector,

March 31, 1910.

VIOLETS OF EASTERN NORTH AMERICA,
Distributed by Ezra Brainerd, Middlebury, Vermont, 1910.

172. *Viola triloba*, var. *dilatata* (Ell.) Brainerd.
V. falcata Greene.

In open woods of dwarf oak, Westville, Okla.

E. Brainerd collector,

April 7, 1910.

VIOLETS OF EASTERN NORTH AMERICA,
Distributed by Ezra Brainerd, Middlebury, Vermont, 1910.

173. *Viola tripartita* Ell.

Wooded banks in rich soil, Biltmore, N. C.

E. Brainerd collector,

April 20, 1910.

VIOLETS OF EASTERN NORTH AMERICA,
Distributed by Ezra Brainerd, Middlebury, Vermont, 1910.

**174. *Viola tripartita* Ell.,
var. *glaberrima* (Ging.) Harper.**

Wooded banks in rich soil, Biltmore, N. C.; growing with the type.

E. Brainerd collector,

April 20, 1910.

VIOLETS OF EASTERN NORTH AMERICA,
Distributed by Ezra Brainerd, Middlebury, Vermont, 1910.

175. *Viola viarum* Pollard.

Grown from seeds in a dried specimen collected by *B. F. Bush* at
Eagle Rock, Mo., August 1905.

Sowing 27; ex horto E. B. collector,

May 16, 1910.

VIOLETS OF EASTERN NORTH AMERICA,
Distributed by Ezra Brainerd, Middlebury, Vermont, 1910.

176. *Viola viarum* Pollard.

Grown from seeds in a dried specimen collected by *B. F. Bush* at
Eagle Rock, Mo., August 1905.

Sowing 27; ex horto E. B. collector,

June 19, 1910.

VIOLETS OF EASTERN NORTH AMERICA,
Distributed by Ezra Brainerd, Middlebury, Vermont, 1910.

177. *Viola villosa* Walter.

Stony pasture, in dead leaves under bushes, Mena, Ark.

E. Brainerd collector,

March 31, 1910.

VIOLETS OF EASTERN NORTH AMERICA,
Distributed by Ezra Brainerd, Middlebury, Vermont, 1910.

178. Viola vittata Greene.

Wet depression in pine forest, Biloxi, Miss.

E. Brainerd collector,

March 18, 1910.

VIOLETS OF EASTERN NORTH AMERICA,
Distributed by Ezra Brainerd, Middlebury, Vermont, 1910.

179. Viola vittata Greene.

Transplanted from Biloxi, Miss., March 1910; *Tracy* donor.

Ex horto E. B. collector,

August 18, 1910.

VIOLETS OF EASTERN NORTH AMERICA,
Distributed by Ezra Brainerd, Middlebury, Vermont, 1910.

180. Viola Walteri House.

In dead leaves under deciduous trees, Mansfield, La.

E. Brainerd collector,

March 28, 1910.

VIOLETS OF EASTERN NORTH AMERICA,
Distributed by Ezra Brainerd, Middlebury, Vermont, 1910.

181. *Viola Walteri* House.

Transplanted from Mansfield, La., March 1910.

Ex horto E. B. collector,

August 18, 1910.

Duplicate labels
presented to me by Dr. Brainerd.
Set 1 - 181 -

I purchased a complete
set of the specimens from
Dr. Brainerd. They are
in my herbarium
all the sp. & var. of Gray's man.
7th ed. except 23, 25, 39, 43. Walter Deane.



Brainerd, Ezra and Deane, Walter. 1910. "Violets of Eastern North America." *A complete set of labels for Ezra Brainerd's distribution of violets in 1910*

View This Item Online: <https://www.biodiversitylibrary.org/item/235531>

Permalink: <https://www.biodiversitylibrary.org/partpdf/269395>

Holding Institution

Harvard University Botany Libraries

Sponsored by

CLIR

Copyright & Reuse

Copyright Status: Public domain. The BHL considers that this work is no longer under copyright protection.

This document was created from content at the **Biodiversity Heritage Library**, the world's largest open access digital library for biodiversity literature and archives. Visit BHL at <https://www.biodiversitylibrary.org>.