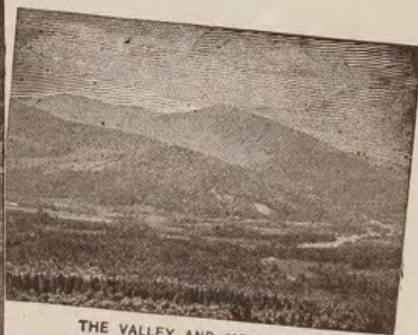


THE INTERVAL FROM THE  
PINE GROVE



PHILBROOK FARM



THE VALLEY AND MOUNTAINS  
FROM CABOT

1 Aug 12/1921

SHELBURNE, N. H.

Dear Dr. Goodale:

I have received a very interesting letter from Mr. Blaschka which I enclose. I fear that he expects that I have assumed entire charge of supplying him with pressed material of what is needed. While I shall do all I can in the way of collecting naming & sending, you remember that I wrote you before I left home that it was not right for me to promise definitely that I could take charge of the entire work in that respect. <sup>this you did not answer -</sup> Up here I shall do what I can but I do not feel that I ought to give up <sup>too much of</sup> ~~all~~ my time. I am not up to what I was





THE INTERVAL FROM THE  
PINE GROVE



PHILBROOK FARM



THE VALLEY AND MOUNTAINS  
FROM CABOT

2

SHELBURNE, N. H.

were last year for I tire easily and  
since my rheumatism <sup>in</sup> my poor  
knees does not allow the bending con-  
tinually that is required in collecting  
Gramineae & Cyperaceae. Miss Brown  
knows just what my doctor let me do,  
and she always goes with me and  
does the digging, &c. I must not impose  
upon too much upon her.

When I reach home, my time is  
entirely taken up with so many  
duties that are not allowed to  
assume more. In fact I ought  
to give up others.

This morning Miss Brown & I  
went down to the river and collected





THE INTERVAL FROM THE  
PINE GROVE



PHILBROOK FARM



THE VALLEY AND MOUNTAINS  
FROM CABOT

3

SHELBURNE, N. H.

<i>Calamagrostis canadensis</i>	ripe fruit
<i>Echinochloa crusgalli</i>	flowering
<i>Agropyrum repens</i>	flower
<i>Scirpus atrovirens</i>	young
<i>Cyperus dentatus</i>	flower
<i>Carex acuta</i>	fruit

These are all in press on  
12 covers -

So something is doing - He shall  
do what we can without my overdoing  
for if I did, everything would stop. I  
know you understand. You see I  
don't know how long this is to go on.

You should have somebody to do  
this same work elsewhere <sup>also</sup> if it were  
possible. I know you'll understand.  
Sincerely Walter.



Deane, Walter. 1921. "Deane, Walter Aug. 12, 1921 [to G.L. Goodale]." *Rudolf Blaschka letters to Walter Deane*

**View This Item Online:** <https://www.biodiversitylibrary.org/item/158899>

**Permalink:** <https://www.biodiversitylibrary.org/partpdf/298592>

**Holding Institution**

Harvard University Botany Libraries

**Sponsored by**

IMLS

**Copyright & Reuse**

Copyright Status: Public domain. The Library considers that this work is no longer under copyright protection

Rights: [Harvard University Botany Libraries](https://www.biodiversitylibrary.org)

This document was created from content at the **Biodiversity Heritage Library**, the world's largest open access digital library for biodiversity literature and archives. Visit BHL at <https://www.biodiversitylibrary.org>.