

July 15, 1925, C. S. Brimley, agrees in structure with the foregoing, but the color of the head more or less, of the propodeum and of the first and second abdominal segments is red, and the legs are reddish, except that the mid and hind tibiae are dark above; the first abdominal segment has a transverse apical row of three yellow spots above, length 13 mm.; finally a male from Willard, N. C., July 15, 1925, C. S. B., agrees with the type in color, but has the hind tibiae dark above as in the Bostic specimen, and the scutellum has a broad yellow band partly divided in the middle.

In Banks' key to eastern *Cerceris* this runs to *compacta*, from which it may be distinguished by the different sculpture of the enclosure and mesepimeron as well as by differences in color, while from *flavofasciatus* (of which Dr. Rohwer tells me it is probably a variety) it may be distinguished in the female sex at least, by the unmarked scutellum, and in both sexes by the predominantly black hind femora.

A New Syrphid (Diptera) from Guatemala.

By DAVID G. HALL, College of Agriculture, University of Arkansas.*

A new species of *Mesogramma* from Guatemala is described herewith from a series of specimens in the collection of J. S. Hine.

Mesogramma flaviplura sp. nov.

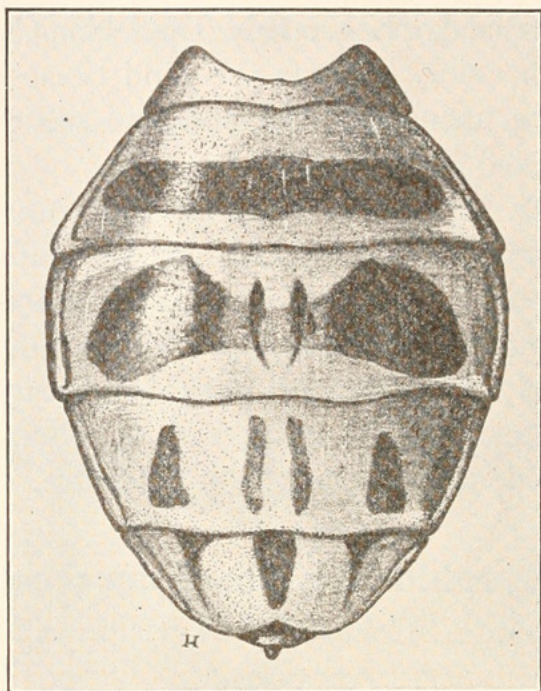
Length 8-9 mm. Face, dark brownish black, dusted with yellow along sides. Antennae, including arista, yellowish brown, third joint being somewhat silvery pollinose. Frontal triangle of male rather narrowed above, almost black, with black colored pile, dusted with whitish pollen a little before ocelli. Front of female blackish, shining and thickly dusted along sides with yellow pollen starting just below ocelli.

Median cinereous stripe of thorax moderately distinct, the rest of thorax dark blackish brown, lightly clothed with dark pile. A light yellow spot on mesopleurae, thinly clothed with light pile. Scutellum unicolorous with thorax, lighter on margin. Halteres yellowish white.

Abdomen of male of the same color as thorax, dark-brown metallic, without an apparent design or pattern. Abdomen of the female similar to that of male, except a series of opaque

*Research Paper No. 54, Journal Series, University of Arkansas.

spots that are hard to define. First segment shining, second with a transversal spot extending across the approximate center, not reaching lateral margins; third segment with a more extensive spot showing a tendency to break into a series of smaller spots, a large one on each side, easily contained within the borders of the segment and connecting somewhat with each



Pattern on abdomen of female *Mesogramma flaviplura*.

other, across a pair of median lines. Spots on the fourth segment distinctly separated, a pair on each side and a pair of median lines or spots. Fifth segment with a pair of oblique spots extending toward median posterior, a single median spot beginning at the anterior margin, extending back about three-fourths the distance toward the posterior margin, taking the place of the median lines on the preceding segments, a small triangular median spot on posterior margin. Fifth segment and hypopygium shining metallic brownish black.

All femora black, with dark pile, knees whitish. Hind tibia black, with dark pile, remaining tibia white, with light colored pile. All tarsi dark, increasingly so toward pulvillae.

Wings, smoked a deep blackish brown, darker along margin.

A series upon which this species is based was collected by Prof. Hine during the months of January, February and March, 1905, at Puerto Barrios, Guatemala, and are in his private collection at Columbus, Ohio.

Type—Female in the collection of Prof. Hine.



Hall, David G. 1927. "A new syrphid (Diptera) from Guatemala." *Entomological news* 38, 239–240.

View This Item Online: <https://www.biodiversitylibrary.org/item/20495>

Permalink: <https://www.biodiversitylibrary.org/partpdf/30173>

Holding Institution

Smithsonian Libraries and Archives

Sponsored by

Smithsonian

Copyright & Reuse

Copyright Status: In copyright. Digitized with the permission of the rights holder.

License: <http://creativecommons.org/licenses/by-nc-sa/3.0/>

Rights: <https://biodiversitylibrary.org/permissions>

This document was created from content at the **Biodiversity Heritage Library**, the world's largest open access digital library for biodiversity literature and archives. Visit BHL at <https://www.biodiversitylibrary.org>.