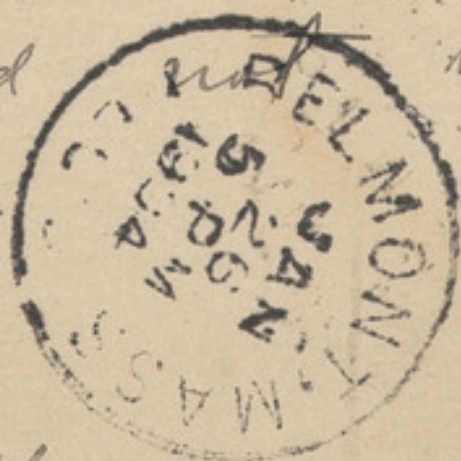


My dear Mr. Drane,

I collected  
Hydrophyllum canadense  
on the north slope of  
Graylock in W<sup>m</sup>s town  
I should think though I  
don't know how the  
town line run on  
June 29, 1899. It grew  
along a brook side but  
I did not see very  
much of it.



Yours sincerely,

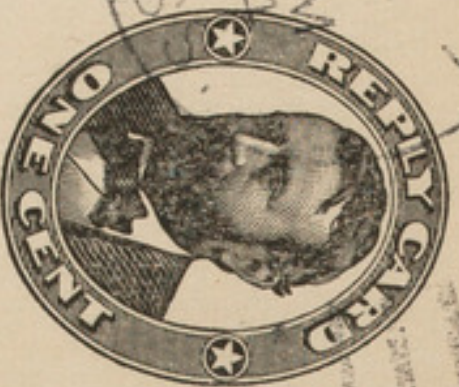
R. Hoffmann  
Belmont  
Apr. 1, 1904



**REPLY POSTAL CARD**

**United States of America**

THIS SIDE IS FOR ADDRESS ONLY



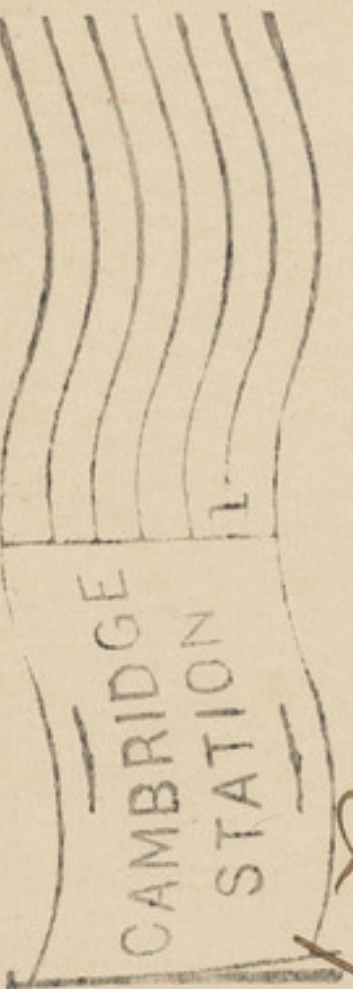
APR 1 8 AM 1904  
MAS

*Walter Reed*

*29 Brewster St,*

*Cambridge*

*Mass.*



BOSTON  
APR 1 1904  
MASS.



Hoffmann, Ralph. 1904. "Hoffman, R. Apr. 1, 1904 [postcard]." *Correspondence relating to preliminary lists of New England plants, 1897-1904 (inclusive)*

**View This Item Online:** <https://www.biodiversitylibrary.org/item/124634>

**Permalink:** <https://www.biodiversitylibrary.org/partpdf/313504>

**Holding Institution**

Harvard University Botany Libraries

**Sponsored by**

IMLS

**Copyright & Reuse**

Copyright Status: Public domain. The BHL considers that this work is no longer under copyright protection.

Rights: [Harvard University Botany Libraries](#)

This document was created from content at the **Biodiversity Heritage Library**, the world's largest open access digital library for biodiversity literature and archives. Visit BHL at <https://www.biodiversitylibrary.org>.