

February 4, 1896.

Dr. A. GÜNTHER, F.R.S., Vice-President, in the Chair.

The Secretary read the following report on the additions to the Society's Menagerie during the month of January :—

The registered additions to the Society's Menagerie during the month of January were 54 in number. Of these 37 were acquired by presentation, 12 by purchase, and 5 were received on deposit. The total number of departures during the same period, by death and removals, was 85.

The following acquisitions are of special interest :—

(1) A young male Manatee from the Rio Purus, Amazons, purchased Jan. 4th.

This animal was brought to Liverpool, from Pará, by Capt. E. J. Collings of the S.S. 'Obidense,' of the Red Cross Line. It appears, so far as I can tell from examination of the living animal, to belong to the Amazonian species distinguished by Natterer many years ago as *Manatus inunguis*, and upon which Dr. Clemens Hartlaub has published an excellent memoir¹.

The living Manatees previously received by the Society have been four in number, namely :—

1. ♀, purchased Aug. 6th, 1875, from Demerara. See P. Z. S. 1875, p. 529.

2. ♂, purchased March 2nd, 1889. See P. Z. S. 1889, p. 160.

3. ♀ ad. } Presented by Sir Henry A. Blake, Oct. 19th, 1893.

4. ♂ jr. } From Jamaica. See P. Z. S. 1893, p. 691.

(2) Two young King Penguins (*Aptenodytes pennanti*) in down plumage, from the Macquarie Islands, south of New Zealand, brought home by Capt. C. S. Milward, of the S.S. 'Otarama,' and purchased Jan. 7th.

Capt. Milward kindly informs us that he received these birds in New Zealand on Nov. 1st, 1895, and that they had been obtained in the Macquarie Islands about Oct. 15th, having been caught only a few days previously. It was stated generally in those islands that the King Penguins are hatched there at the latter end of December or beginning of January, so that these birds are probably about a year old and will shortly moult into their adult plumage.

The following papers were read :—

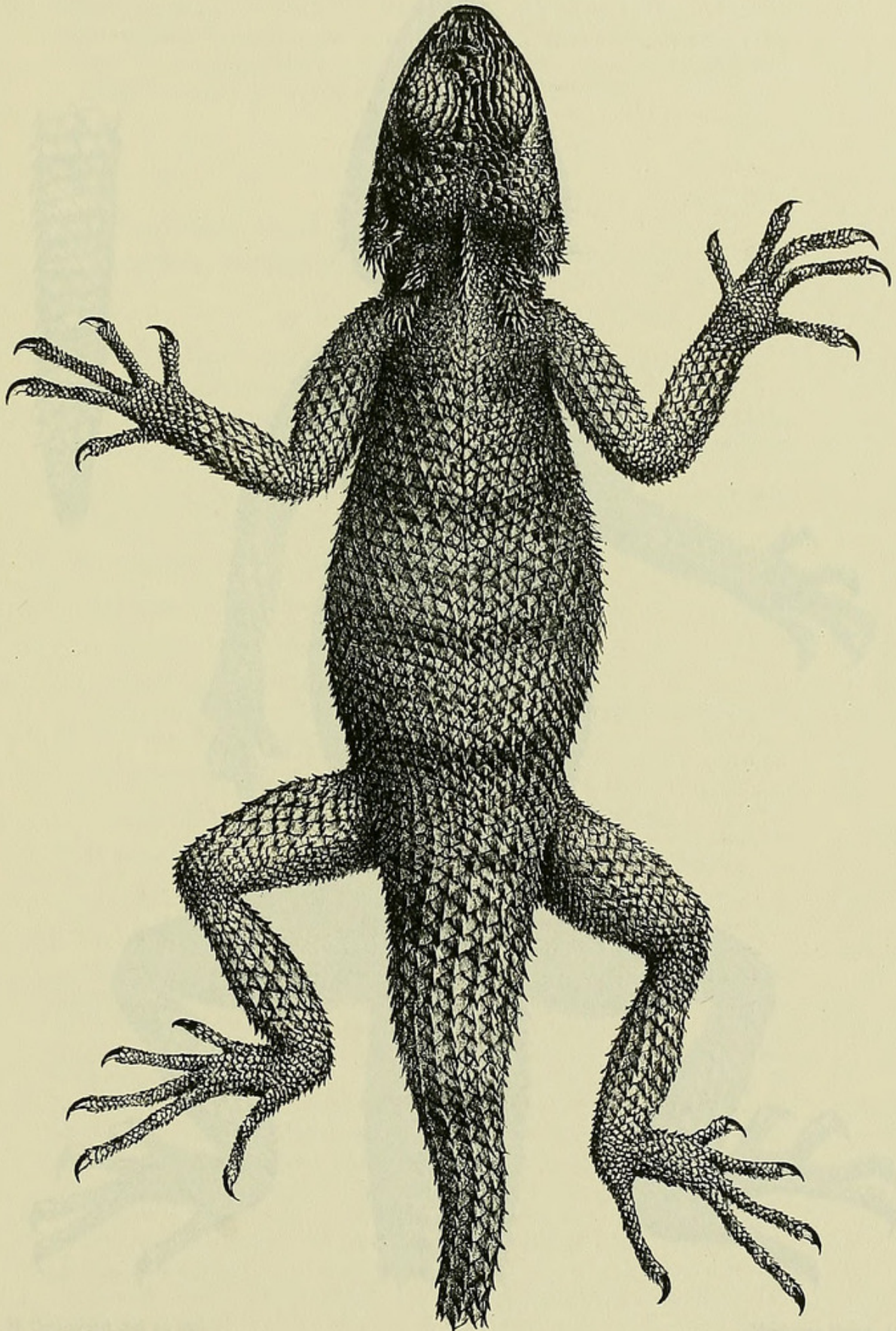
1. Second Report on the Reptiles and Batrachians collected by Dr. A. Donaldson Smith during his Expedition to Lake Rudolf. By G. A. BOULENGER, F.R.S.

[Received January 7, 1896.]

(Plates VII. & VIII.)

The present list refers to the second and concluding portion of Dr. Donaldson Smith's collection. The first instalment, from

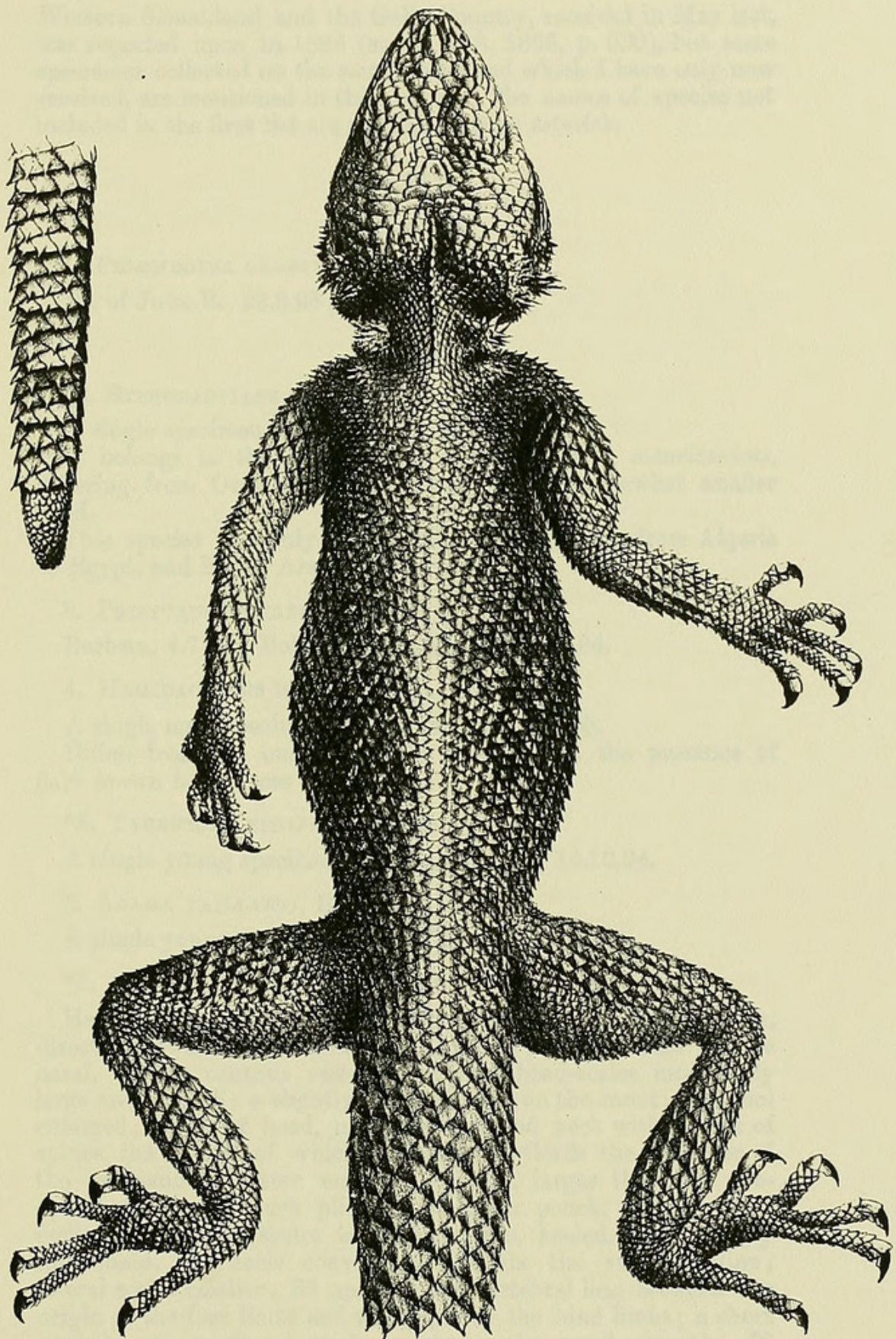
¹ "Beiträge zur Kenntniss der Manatus-Arten," Zool. Jahrb. i. p. 1 (1886).



H. Grönvold del. et lith.

Mintern Bros. imp.

AGAMA SMITHII.



H. Grönvold del et lith.

Mintern Bros. imp.

AGAMA LIONOTUS.

Western Somaliland and the Galla Country, received in May last, was reported upon in 1895 (see P. Z. S. 1895, p. 530), but some specimens collected on the same route, and which I have only now received, are mentioned in this report. The names of species not included in the first list are marked with an asterisk.

REPTILES.

CHELONIANS.

1. PELOMEDUSA GALEATA, Schoepff.

W. of Juba R., 23.3.95; 24.3.95.

LIZARDS.

*2. STENODACTYLUS GUTTATUS, Cuv.

A single specimen from Lake Rudolf, 22.8.95.

It belongs to the stouter form described as *S. mauritanicus*, differing from Oran specimens merely in the somewhat smaller head.

This species was only known from North Africa, from Algeria to Egypt, and North Arabia.

3. PRISTURUS CRUCIFER, Val.

Berbera, 4.7.94; Boholgarshan, 13.7.94, 15.7.94.

4. HEMIDACTYLUS ISOLEPIS, Blgr.

A single male specimen. Lake Rudolf, 10.8.95.

Differs from the one previously described in the presence of dark brown bars across the back.

*5. TARENTOLA EPHIPPIATA, O'Sh.

A single young specimen. Sheikh Husein, 14.10.94.

6. AGAMA VAILLANTI, Blgr.

A single young specimen. W. of Juba R., 7.3.95.

*7. AGAMA SMITHII, sp. n. (Plate VII.)

Head convex, slightly longer than broad. Nostril tubular, directed upwards and backwards, in the posterior part of the nasal, on the canthus rostralis. Upper head-scales moderately large and smooth; a slightly elongate scale on the snout; occipital enlarged; sides of head, near the ear, and neck with groups of spines, the longest of which measure two-thirds the diameter of the tympanum; latter entirely exposed, larger than the eye-opening. Throat much plicate; no gular pouch. Body rather depressed; dorsal scales large, imbricate, keeled, and strongly mucronate, the keels converging towards the vertebral line; lateral scales smaller; 33 scales on the vertebral line between the origin of the fore limbs and the origin of the hind limbs; a short nuchal crest; no dorsal crest; ventral scales small, smooth; 58 scales round the middle of the body. The adpressed hind limb

reaches the eye; tibia longer than the skull; third finger slightly longer than fourth; fourth toe slightly longer than third. Tail rounded; the scales as large as the dorsals and not verticillate. Pale olive-brown above, with traces of dark cross-bands; white beneath, throat with dusky longitudinal streaks.

	millim.		millim.
From snout to vent.	110	Fore limb	60
Head	25	Hind limb	90
Width of head	23	Tibia	30

A single female specimen, with part of the tail missing. Between Shebeli and Juba Rivers, 27.2.95.

This species is intermediate between *A. spinosa* and *A. rueppellii*.

8. AGAMA DORIE, Blgr.

W. of Juba R., 21.3.95; L. Stephanie, 16.6.95; L. Rudolf.

*9. AGAMA LIONOTUS, sp. n. (Plate VIII.)

Head rather strongly depressed, as long as broad. Nostril tubular, directed upwards and backwards, in the posterior part of the nasal, on the canthus rostralis. Upper head-scales moderately large, smooth; two elongate scales on the middle of the snout; occipital enlarged; nine or ten upper labials; sides of head, near the ear, and neck with groups of spines, the longest of which nearly equal the diameter of the tympanum; latter entirely exposed, a little larger than the eye-opening. Throat much plicate; no gular pouch. Body strongly depressed; dorsal scales small, broader than long, rounded behind, very feebly and obtusely keeled, the keels converging towards the vertebral line; 50 scales on the vertebral line between the origin of the fore limbs and the origin of the hind limbs; a small nuchal crest; no dorsal crest; ventral scales small, smooth; 65 scales round the middle of the body. The adpressed hind limb reaches the tympanum; tibia slightly longer than the skull; third finger a little longer than fourth; fourth toe a little longer than third. Tail compressed and serrated above, with large, keeled, and mucronate scales forming annuli. Male with a row of anal pores. Dark olive above, lighter on the vertebral line; some of the dorsal scales yellowish; head yellow above, sides near the ear reddish, brick-red beneath; belly and lower surface of limbs bluish grey.

	millim.		millim.
From snout to vent.	130	Fore limb	61
Head	30	Hind limb	92
Width of head	28	Tibia	32

A single male specimen, with imperfect tail. S.E. of Lake Rudolf, 2.9.95.

Most nearly allied to *A. planiceps*, but distinguished by the larger spines on the sides of the head and neck, and by the very feebly keeled dorsal scales,

10. *AGAMA ANNECTENS*, Blanf.
Webi Shebeli, 25.12.94.
11. *AGAMA CYANOASTER*, Rüpp.
Sheikh Husein, 11.10.94; 16.10.94.
12. *VARANUS OCELLATUS*, Rüpp.
Between L. Stephanie and L. Rudolf, 4.7.95.
13. *LATASTIA LONGICAUDATA*, Reuss.
Between Shebeli and Juba R., 28.2.95; W. of Juba R., 21.3.95;
Lake Stephanie, 11.6.95, 18.6.95.
14. *EREMIAS SEXTÆNIATA*, Stejn.
W. of Juba R., 19.3.25; Boran Country, 24.4.95.
15. *EREMIAS MUCRONATA*, Blanf.
13.7.94.
- *16. *MABUIA PLANIFRONS*, Ptrs.
A single specimen. W. of Juba R., 7.3.95.
17. *MABUIA MEGALURA*, Ptrs.
A single specimen. L. Abeia, 22.5.95.
- *18. *MABUIA QUINQUETÆNIATA*, Licht.
A single young specimen. Between L. Stephanie and L. Rudolf,
4.7.95.
19. *MABUIA VARIA*, Ptrs.
Sheikh Husein, 16.9.94.
20. *MABUIA STRIATA*, Ptrs.
Milmil, 27.7.94.
21. *LYGOSOMA SUNDEVALLII*, Smith.
Sheikh Husein, 11.10.94; L. Stephanie, 18.6.95.
- *22. *ABLEPHARUS WAHLBERGII*, Smith.
Smith River, 12.9.94.
23. *CHALCIDES OCELLATUS*, Forsk.
Sheikh Husein, 10.10.94.
24. *CHAMÆLEON GRACILIS*, Hallow.
Sheikh Husein, 8.10.94, 10.10.94; Furza, 12.9.94, 12.12.94.
- *25. *CHAMÆLEON BITÆNIATUS*, Fisch.
L. Abeia, 22.5.95.

SNAKES.

*26. *TYPHLOPS BLANFORDII*, Blgr.

A single specimen, without label.

27. *TYPHLOPS SOMALICUS*, Blgr.

Sheikh Husein, 8.10.94.

*28. *ERYX THEBAICUS*, Reuss.

Between Shebeli and Juba R., 16.2.95, 18.2.95; Lake Abeia, 18.5.95; L. Stephanie, 2.6.95.

*29. *TROPIDONOTUS OLIVACEUS*, Ptrs.

L. Rudolf, 4.8.95.

30. *BOODON LINEATUS*, D. & B.

Sheikh Husein, 23.9.94; 4.10.94; 8.10.94; 19.10.94.

*31. *LYCOPHIDIUM CAPENSE*, Smith.

W. of Juba R., 28.3.95. A single specimen, belonging to the category B of my catalogue. V. 190; C. 43.

32. *ZAMENIS SMITHII*, Blgr.

W. of Juba R., 7.3.95. A single specimen, ♂, V. 171; tail injured. Pale buff, with brick-red spots; the black bars of the temples extend across the parietal shields.

*33. *PHILOTHAMNUS SEMIVARIEGATUS*, Smith.

Madu, 4.3.95. A single female specimen. V. 178; C. 131.

34. *RHAMPHIOPHIS OXYRHYNCHUS*, Reinh.

Lake Rudolf, 6.8.95.

35. *PSAMMOPHIS PUNCTULATUS*, D. & B.

Lake Rudolf, 6.8.95. A large female specimen, 1660 millim. long, with 184 ventrals and 136 subcaudals.

36. *PSAMMOPHIS BISERIATUS*, Ptrs.

San Kural, 6.1.95; W. of Juba R., 19.3.95.

*37. *DISPHOLIDUS TYPICUS*, Smith.

Sheikh Husein, 8.10.94.

*38. *APARALLACTUS CONCOLOR*, Fisch.

Boran Country, 24.4.95. A single specimen.

*39. *NAIA NIGRICOLLIS*, Reinh.

Lake Stephanie, 11.6.95; L. Rudolf, 24.7.95.

*40. *DENDRASPIS ANGUSTICEPS*, Smith.

A single specimen, without label.

*41. *BITIS ARIETANS*, L.

Stonybrook, 19.8.94; W. of Juba R., 22.3.95.

*42. *ECHIS CARINATUS*, Schn.

Lake Stephanie, 11.6.95.

BATRACHIANS.

*1. *RANA ORNATA*, Ptrs.

W. of Juba R., 22.3.95; 26.3.95.

2. *RANA MASCARENIENSIS*, D. & B.

Dawa R., 2.3.95; Lake Rudolf, 11.8.95.

3. *CASSINA OBSCURA*, Blgr.

W. of Juba R., 12.3.95; 26.3.95.

4. *BUFO REGULARIS*, Reuss.

L. Abeia, 11.5.95; L. Stephanie, 11.6.95.

EXPLANATION OF THE PLATES.

PLATE VII.

Agama smithii, p. 213.

PLATE VIII.

Agama lionotus, with side view of tail, p. 214.

2. Report on a Collection of Fishes made by Dr. A. Donaldson Smith during his Expedition to Lake Rudolf. By Dr. ALBERT GÜNTHER, F.R.S.

[Received January 13, 1896.]

(Plate IX.)

Having been entrusted by Dr. Donaldson Smith with the examination of the Fishes collected by him during his recent expedition in Eastern Africa, I herewith give the result of my examination. Owing to the great difficulties of the transport of preserving materials, the number of specimens had to be restricted, the entire collection amounting to 35 specimens which are referable to 18 species. The chief interest attached to this collection centres in the fishes from Lakes Rudolf and Stephanie,



Boulenger, George Albert. 1896. "Second Report on the Reptiles and Batrachians collected by Dr. A. Donaldson Smith during his Expedition to Lake Rudolf." *Proceedings of the Zoological Society of London* 1896, 212–217.
<https://doi.org/10.1111/j.1096-3642.1896.tb03036.x>.

View This Item Online: <https://www.biodiversitylibrary.org/item/97658>

DOI: <https://doi.org/10.1111/j.1096-3642.1896.tb03036.x>

Permalink: <https://www.biodiversitylibrary.org/partpdf/69845>

Holding Institution

Smithsonian Libraries and Archives

Sponsored by

Biodiversity Heritage Library

Copyright & Reuse

Copyright Status: Public domain. The BHL considers that this work is no longer under copyright protection.

This document was created from content at the **Biodiversity Heritage Library**, the world's largest open access digital library for biodiversity literature and archives. Visit BHL at <https://www.biodiversitylibrary.org>.