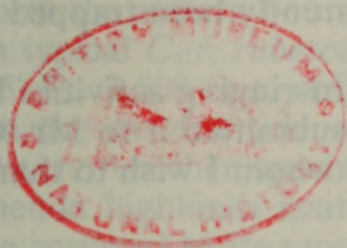


# BULLETIN

## OF THE

# BRITISH ORNITHOLOGISTS' CLUB



---

**Volume 83****Number 7***Published: 1st October, 1963*

---

The six hundred and ninth meeting of the Club was held at the Rembrandt Hotel, London, on the 17th September, 1963.

*Chairman:* Major-General C. B. Wainwright

Members present, 22; Guests 6; Honorary Associates (Overseas) 2; Members of the B.O.U. 4. Total 34.

Mr. M. D. England addressed the meeting on a visit that he and others made to an undisclosed part of Portugal.

His talk was illustrated with coloured photographs, including some of the Black-winged Kite (*Elanus caeruleus*), a species that the party particularly hoped, but scarcely expected to find.

### **An aberrant *Pycnonotus* from Johannesburg, South Africa**

by MILES B. MARKUS

*Received 2nd May, 1963*

On 24th July 1962 an abnormal adult male bulbul was caught at Bryanston, Johannesburg. According to plumage it was an example of *Pycnonotus barbatus layardi* Gurney (*Pycnonotus capensis layardi* of some authors) which inhabits the locality, but exhibited an irregularity of the eye-wattles. The normal diagnostic eye-wattle colour of *P. b. layardi* is black, but these were lemon-yellow, resembling those of two birds which were collected north-east of Potchefstroom in the Western Transvaal (Markus<sup>1</sup>); their eye-wattles were a light brownish-khaki, becoming yellowish towards the inside, those of one bird being slightly darker than those of the other. Attention was recently drawn to the Johannesburg specimen elsewhere (Markus<sup>2</sup>).

This bird was in non-breeding condition with testes *circa* 1.25 mm. in diameter, a wing measurement of 103.5 mm., a tarsus of 19.5 mm. and the culmen 22 mm. in length, taken from the forehead. Iris brown; the irides of the Western Transvaal bulbuls referred to in the previous paragraph were reddish-brown. In view of the fact that Johannesburg lies within and not on the periphery of the range of *P. b. layardi*, the specimen under discussion would not appear to be an intergrade, as such, between *P. b. layardi* and the very closely allied red eye-wattled *Pycnonotus nigricans* (Vieillot) and is therefore of particular interest. *P. nigricans* replaces *P. b. layardi* approximately 80 miles to the north-west and is also considered conspecific with white eye-wattled *Pycnonotus capensis* (Linnaeus) by some specialists. There is nothing to indicate that the abnormal specimen was at any time a caged bird, nor does there appear to be any reason to suspect that it may have wandered from another area as *P. b. layardi* in



Markus, Miles B. 1963. "An aberrant Pycnonotus from Johannesburg, South Africa." *Bulletin of the British Ornithologists' Club* 83, 117–113.

**View This Item Online:** <https://www.biodiversitylibrary.org/item/126838>

**Permalink:** <https://www.biodiversitylibrary.org/partpdf/77844>

**Holding Institution**

Natural History Museum Library, London

**Sponsored by**

Natural History Museum Library, London

**Copyright & Reuse**

Copyright Status: In copyright. Digitized with the permission of the rights holder.

Rights Holder: British Ornithologists' Club

License: <http://creativecommons.org/licenses/by-nc-sa/4.0/>

Rights: <https://biodiversitylibrary.org/permissions>

This document was created from content at the **Biodiversity Heritage Library**, the world's largest open access digital library for biodiversity literature and archives. Visit BHL at <https://www.biodiversitylibrary.org>.