

A NEW *BOMOLOCHA* FROM FLORIDA (NOCTUIDAE)

ALEX K. WYATT

Field Museum of Natural History, Chicago, Illinois

Mr. Henry Ramstadt of Chicago spent several winters in Florida collecting insects of various orders. He resided on the premises of Mr. Sam Huffman who had a citrus grove on the west bank of Prairie Creek (a river some 80 feet wide at this point), about five miles northeast of the town of Cleveland in Charlotte County. Mr. Ramstadt's night collecting at light and at sugar was all done on the Huffman premises and day collecting within a mile or two. Unfortunately, the Huffmans used Punta Gorda as their mailing address and Mr. Ramstadt's captures were so labeled instead of being more specific.

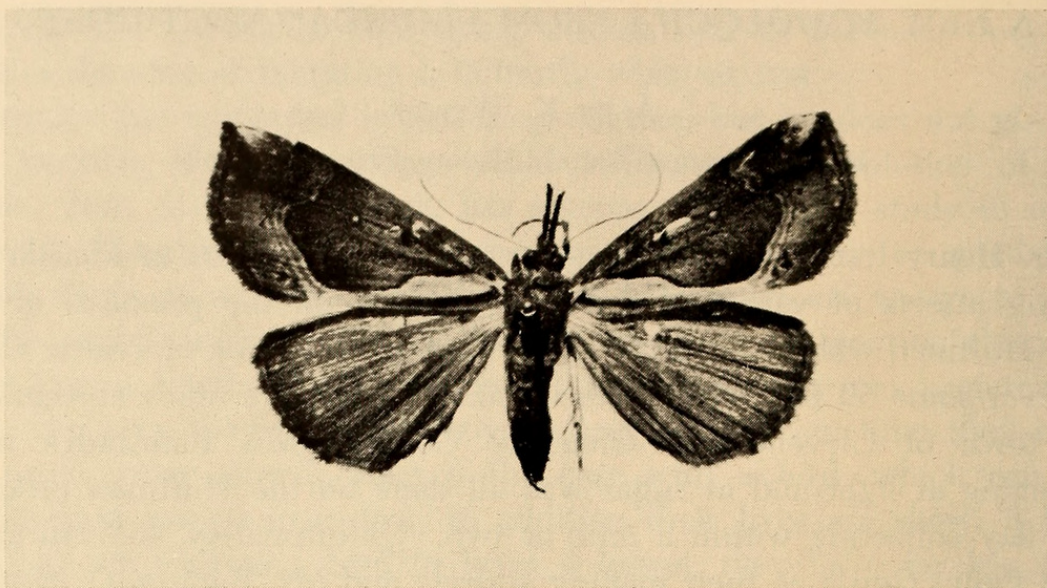
Among Mr. Ramstadt's captures was a *Bomolocha* which appears to be undescribed. There is not anything like it in the U.S. National Museum, and Mr. W. H. T. Tams, to whom a black and white photograph was sent for comparison with British Museum material, suggested that the Florida *Bomolocha* should be described as a new species.

***Bomolocha ramstadtii* A. K. Wyatt, new species**

FEMALE: *Head:* Palpi porrect, flattened laterally, three times length of head; last segment upturned, white tipped. Antennae very finely bristled. Head and thorax brownish black with some gray scales. *Abdomen:* Tufted, the tufts appearing brownish black and shading down on sides of abdomen to pale cinereous.

Forewing: Basal and median portion between costa and about anal fold, extending outwardly to position of post-median line brownish black, without trace of an antemedial line; edged by a black line, the post-median, beginning at costa about two thirds from base and extending about half way across wing toward inner angle, then curving downward into a straight line toward middle of inner margin to a prominent broad white streak running along anal fold almost to base, then continuing along upper edge of this white streak to near base, then angling obliquely upward with a slight curve to end at base near the subcostal vein; the white streak (by far the most outstanding feature of the species) occupying about half the space between black line and inner margin of wing, portion below dark grayish brown; a dark spot in cell representing the orbicular; reniform quite obscure, indicated by a faint white bar, slightly angled, with a dark shade adjoining it outwardly; a pink or rose colored line running close to and parallel with outer edge of dark area, extending downward to the white streak, set off by white on both sides, obscured at its upper end by a dark shade surrounding apex; apex distinctly white; another dark shade at inner angle of wing; two black spots close to post median, near inner margin, leaving most of area between the basal area and outer margin clouded. Fringes brownish gray with a dark line at base, preceded by light spots between veins.

Hindwing: Even brownish gray with only a slightly darker spot near end of cell. Fringes similar to those of forewing but without lighter spots between veins. Hindwing beneath, glistening, unicolorous, gray, somewhat lighter than hindwing



Bomolocha ramstadtii A. K. Wyatt, holotype ♀, 5 miles northeast of Cleveland, Charlotte County, Florida.

upperside, with only the darker spot showing through a little more distinctly than above.

Length of forewing: 15 mm.

Holotype, female: Florida, 5 miles northeast of Cleveland, Charlotte County [labeled Punta Gorda], April 18, 1953; Henry Ramstadt collector; deposited in collection of the Field Museum of Natural History at Chicago, Illinois.

When I sent the photograph of the new species to Mr. Tams of the British Museum (Natural History), I suggested that it might be *B. exoticalis* (Gueneé) the type of which was in that museum. Mr. Tams replied saying that it definitely was not *exoticalis*, and enclosed a photo of that type. Some similarity between the two species could be discerned from the photograph of *exoticalis*. The primaries both have a white streak along the anal fold, although there are minor variations in shape and outline. The primaries of *exoticalis* on the whole are distinctly black with no outlining of the basal area. There is an irregular white area with a dark center along the costa, beginning at about the end of the cell and extending outwardly to just before the apex of the wing, where it ends in a point. The apex of the wing is dark, whereas in *ramstadtii* the apex is distinctly white, and there is no white area along the costa preceding the apex. There are other minor differences.

Additional collections which presumably represent *B. ramstadtii*, are mentioned by Kimball in his 1965 treatment of the Lepidoptera of Florida. Localities which he lists in addition to Punta Gorda, are Gainesville, Archbold Biological Station, and Homestead.



1967. "A new Bomolocha from Florida (Noctuidae)." *Journal of the Lepidopterists' Society* 21, 125–126.

View This Item Online: <https://www.biodiversitylibrary.org/item/128076>

Permalink: <https://www.biodiversitylibrary.org/partpdf/81256>

Holding Institution

Smithsonian Libraries and Archives

Sponsored by

Biodiversity Heritage Library

Copyright & Reuse

Copyright Status: In Copyright. Digitized with the permission of the rights holder.

License: <http://creativecommons.org/licenses/by-nc-sa/3.0/>

Rights: <https://www.biodiversitylibrary.org/permissions/>

This document was created from content at the **Biodiversity Heritage Library**, the world's largest open access digital library for biodiversity literature and archives. Visit BHL at <https://www.biodiversitylibrary.org>.