

points; venter wholly pale. Structure similar to *H. pikei*, but more robust; cephalothorax rather broader; leg i heavy, 4-4 spines under tibia i, and one above base of first of inner series, one spine on inner side of patella i, and three in a transverse row near tip of femur i; hind metatarsi spined only at tip, and tibia iv with but one sub-basal and an apical pair below. Abdomen about four times as long as broad, truncate at base, with crest of hairs, sides sub-parallel.

Length 8.5 mm.

One female from Arizona (Townsend).

Plexippus vittatus, n. sp.

Cephalothorax pale yellowish brown, eye-region blackish, rather paler in middle, a row of about ten curved black bristles below side of eye region, much short white hair around eyes; clypeus pale yellowish brown, as also mandibles, palpi, and legs, on the under side of femur i near tip are two short transverse black bars; sternum and venter pale; dorsum of abdomen with a straight jet-black stripe each side from base to tip, and between them a broad stripe of white. The structure is similar to *P. paykulli* in many respects; leg i is plainly thicker than others, and rather long, there are 4-4 spines under tibia i and one above base of first of inner series, one on inner side of patella i, and five or six above toward tip of femur; tibiae and metatarsi iii and iv have long spines near base and middle as well as at tip. Abdomen about three times as long as broad.

Length 9 mm.

Female from Arizona (Townsend).

EXPLANATION OF PLATE II.

- Fig. 1.—*Gonglydium kincaidi*, male palpus.
 2.—*Bathyphantes pacifica*, male palpus.
 3.—*Bathyphantes pacifica*, male palpus.
 4.—*Exechophysis palustris*, male palpus.
 5.—*Hyctia robusta*, vulva.
 6.—*Plexippus vittatus*, vulva.
 7.—*Gonglydium kincaidi*, male palpus.
 8.—*Exechophysis palustris*, head of male.
 9.—*Exechophysis palustris*, male palpus.
 10.—*Exechophysis nigriceps*, side view of male.
 11.—*Exechophysis nigriceps*, male palpus.
 12.—*Tmeticus armatus*, male palpus and mandible.
 13.—*Pellenes formosus*, patella iii of male.
 14.—*Pellenes formosus*, male palpus.
 15.—*Crustulina pallipes*, vulva.
 16.—*Bathyphantes pacifica*, vulva.
-

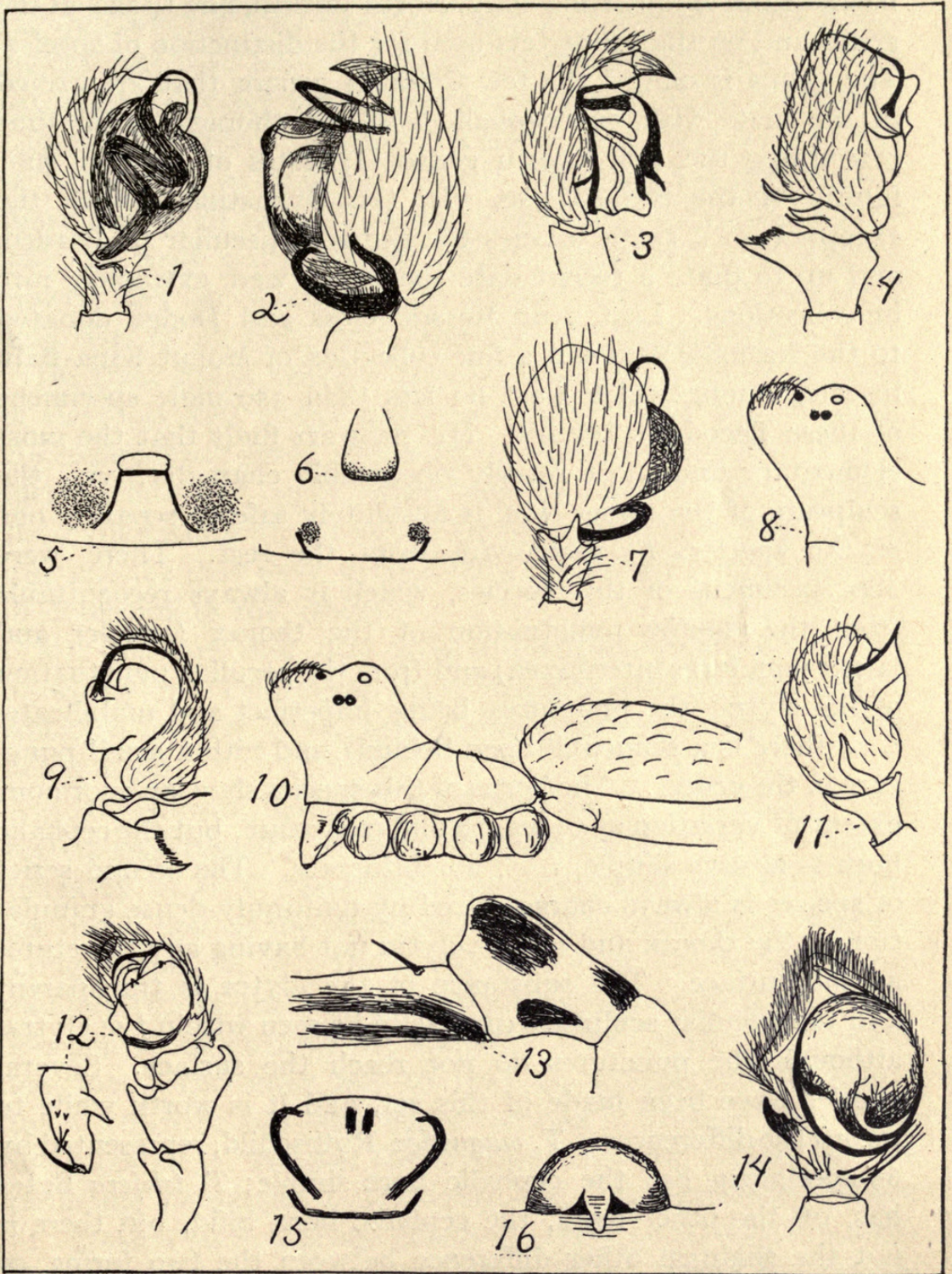


PLATE II.
NEW AMERICAN SPIDERS.



Webb, J. L. 1905. "Description of a new species of *Desmocerus* with a synoptic table of the genus." *Proceedings of the Entomological Society of Washington* 7, 104–105.

View This Item Online: <https://www.biodiversitylibrary.org/item/19615>

Permalink: <https://www.biodiversitylibrary.org/partpdf/8748>

Holding Institution

Smithsonian Libraries and Archives

Sponsored by

Internet Archive

Copyright & Reuse

Copyright Status: NOT_IN_COPYRIGHT

This document was created from content at the **Biodiversity Heritage Library**, the world's largest open access digital library for biodiversity literature and archives. Visit BHL at <https://www.biodiversitylibrary.org>.