

LASCA Leaves



Los Angeles County Department of Arboreta and Botanic Gardens

GARDEN SHOW 1987 CALLED "BEST SHOW TO DATE"

RECORD WEEKDAY crowds more than balanced two days washed out by rain during the Los Angeles Garden Show held at the Los Angeles State and County Arboretum Oct. 16-25.

John Provine, Arboretum superintendent, called it "the best Garden Show to date! The garden displays were the nicest we have had since the Garden Show began seven years ago." Mr. Provine noted that in spite of the rain, attendance was up 10 percent over last year, with the biggest increase seen on weekdays. "Trade Mart vendors were pleased with their increased sales due to the crowds," he said. More than 30,000 visitors came through the gates for the show.

Winners among the model gardens and floral displays that interpreted the 1987 show theme, "The English Influence," were announced on opening day.

Sweepstakes award went to Monrovia Nursery, Azusa, for a formal garden featuring colored foliage plants that swirled among statues and arbors.

Sassafras Farms and Nursery, Toppanga, and O'Farrior Topiary, Pasadena,

won the theme awards. Animals shaped from shrubs and vines cavorted among bright flowers in O'Farrior's interior garden. Sassafras won the exterior theme award with pastel banks of perennial flowers bordering a flagstone path that meandered under flower-covered arches. This entry was named best medium-sized garden, and also won rib-

bons for originality, overall design, and poster theme.

First place ribbons were awarded to professional designers in several other categories. Cornell & Wiskar, Los Angeles landscape designers, won in the small garden class. The joint entry of Hines Nursery, Santa Ana, and Landscape Assistance, Temple City, won first place in the



At the Los Angeles Garden Show Preview Party Oct. 15, Ginny (Mrs. Henry) Braun (left) sells one of the raffle tickets festooning her costume to Alice Thomas, California Arboretum Foundation president.

large garden entry and a ribbon for the use of fragrant flowers.

Los Angeles County Agricultural Commissioner/Weights and Measures Department earned a ribbon for the use of edible flowers and plants, while the Los Angeles State and County Arboretum used colorful flowers to win two ribbons. LASCA also took first place in the interior exhibits with Baikoen Bonsai Kenkyukai placing second.



The California Arboretum Foundation Adult Education won a ribbon for an exhibit that showcased students' efforts in classes ranging from ikebana flower arranging to photography and drawing. In the amateur category, Raymond Ross, Azusa, won first place. UCLA Extension won a merit award and a ribbon for their miniature English garden.

Banning and Bradley, Pasadena; Perry's Panorama of Somis; and Stonescapes, of Glendale and Sierra Madre received judges' merit awards. Other merit awards went to Armstrong Garden Centers, Monrovia; Desert to Jungle Nursery, Montebello; and the Los Angeles Flower District.

The Pasadena Garden Club maintained an educational display on the effects of air pollution on plants throughout the Garden Show.

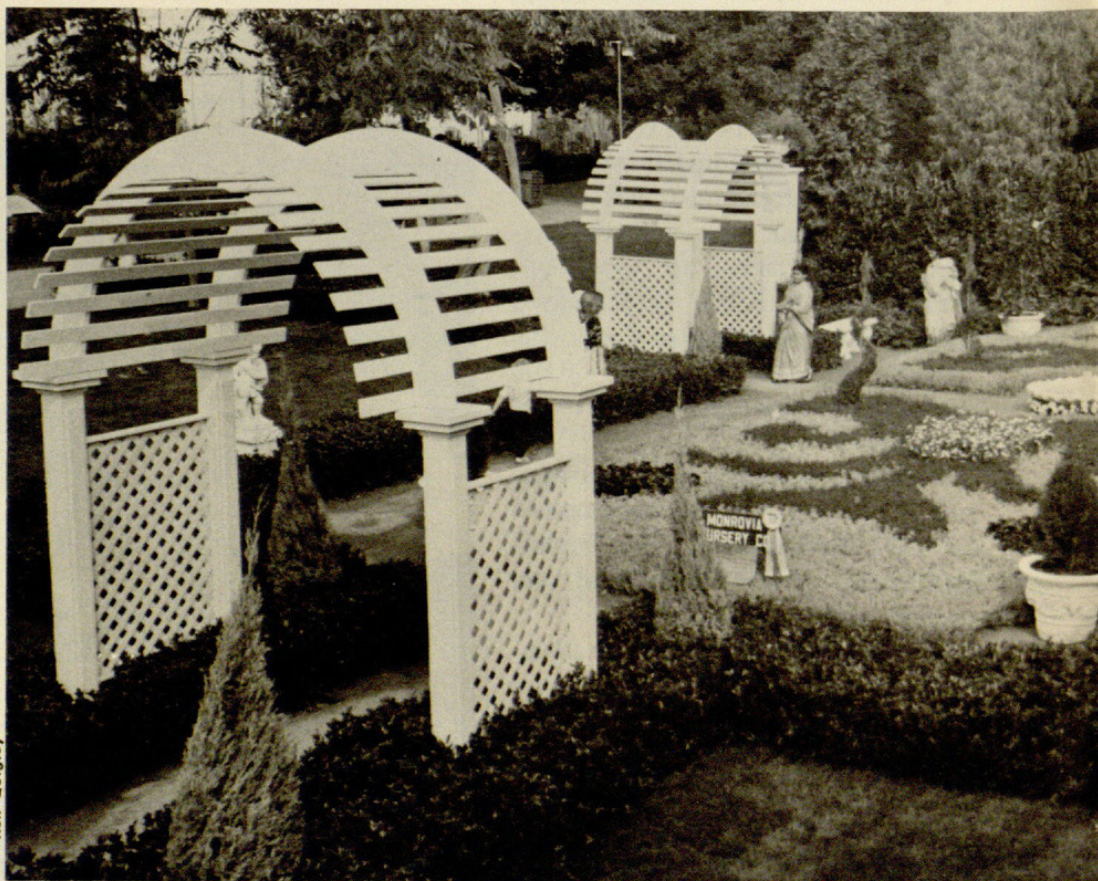
With the 1987 show finished, work began for the next edition of the Los Angeles Garden Show which will run Oct. 14-23, 1988.



Above A formal garden by Hines Nursery and Landscape Assistance won several awards at the Garden Show.

Below Visitors stroll through the manor garden that garnered the sweepstakes award for Monrovia Nursery.

Left Sylvia Gentile of Windlines designed the welcoming banner.





Above Wives of the Los Angeles Consular Corps return for their second annual visit to the Los Angeles Garden Show.

Right A perfectly scaled landscape surrounds a country house less than three feet tall in the UCLA Extension Landscape Architecture program entry.

Below In the Trade Mart, shoppers choose among exotic trees, plants and flowers including these plumeria cuttings.





1988. "Garden show 1987 called "Best show to date"." *Garden* 12(1), 1–3.

View This Item Online: <https://www.biodiversitylibrary.org/item/154931>

Permalink: <https://www.biodiversitylibrary.org/partpdf/125449>

Holding Institution

Missouri Botanical Garden, Peter H. Raven Library

Sponsored by

Los Angeles Arboretum

Copyright & Reuse

Copyright Status: In copyright. Digitized with the permission of the rights holder.

License: <http://creativecommons.org/licenses/by-nc-sa/3.0/>

Rights: <https://www.biodiversitylibrary.org/permissions>

This document was created from content at the **Biodiversity Heritage Library**, the world's largest open access digital library for biodiversity literature and archives. Visit BHL at <https://www.biodiversitylibrary.org>.