

A NEW GENUS OF SPIDERS.

BY THEO. H. SCHEFFER, A.M., MANHATTAN, KANS.

Family Thomisidæ : Subfamily PHILODROMINÆ.

Philodromoides, gen. nov.—Cephalothorax low, about as wide as long ; head region much narrowed and slightly elevated. Abdomen fully twice as long as wide, very little wider behind than at the base ; somewhat pointed at the end ; the base projects a short distance over the cephalothorax, and is distinctly notched on the upper side. The sternum and labium are about as in *Philodromus*. All eyes approximately equal in size ; the anterior row much the shorter and slightly recurved ; median eyes of this row farther from each other than from the side eyes. Posterior row also recurved ; side eyes of this row on larger tubercles than any of the others ; median eyes farther from each other than from the side eyes. Ocular quadrangle considerably wider behind ; about as wide as long. Clypeus wider than space between anterior median eyes, but not as wide as space between posterior median eyes ; obliquely directed forward and downward. Legs long and slender, the second pair longest, the third shortest ; the relative lengths are, in their order, second pair, first pair, fourth pair, third pair. The tibiæ of the first and second pairs are set beneath with ten or twelve stout spines arranged in two rows, and the metatarsi are similarly armed with half that number. Weaker spines likewise occur on the other two pairs of legs and on the pedipalps.

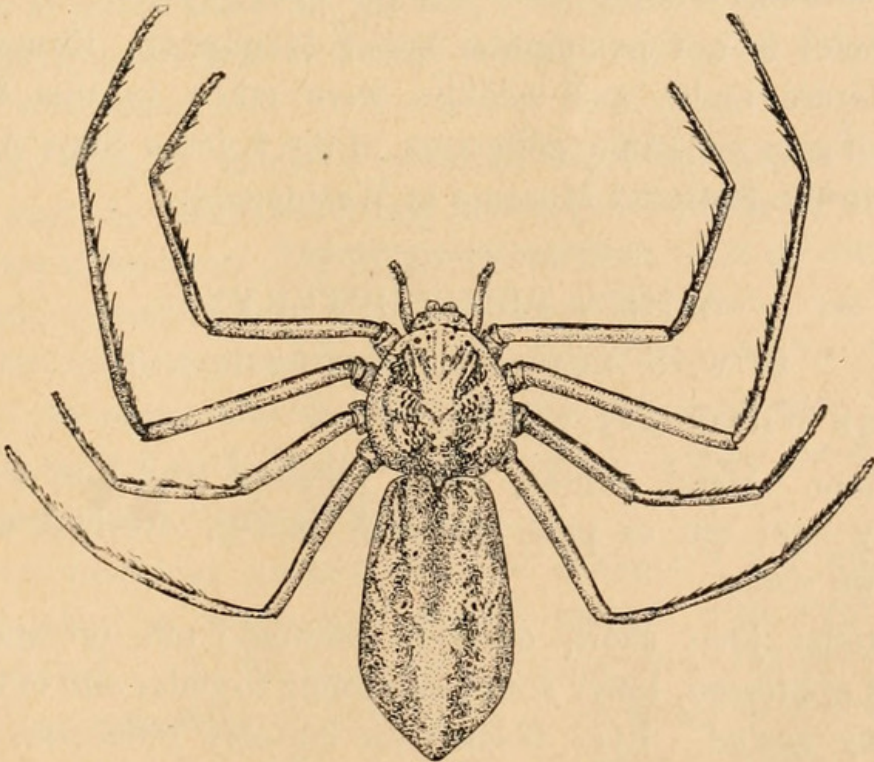


FIG. 8.

Philodromoides prataria, sp. nov.—Female. Length, 6 mm.; length and width of cephalothorax, 2 mm.; width of abdomen, 2 mm. Other characters as given in the generic description. A very few short bristle-like hairs scattered about among the spines on the outer joints of the legs and on the chelicerae and the pedipalps; thickest on the tarsi of the latter.

Coloration.—Abdomen plain brown above, mottled and streaked with a lighter shade. The four muscle impressions are quite distinct. Cephalothorax rusty-brown, lighter at the sides and just back of the head region. Streaks marked by depressed lines radiate from the dorsal groove. The sternum is pale yellow or almost white. The abdomen is lighter beneath than above, and there is a less mottled central region, set off by a row of indistinct dots on either side. The legs are pale yellow to whitish. The femora, patellae and tibiae of all four pairs are marked in front with a longitudinal stripe of black, which becomes nearly obliterated on the metatarsi and tarsi. The corresponding joints of the legs of the third and fourth pairs are similarly marked on the hind border also.

The males are somewhat smaller than the females, the abdomen being considerably narrower than the cephalothorax. The legs are more hairy in appearance and the spines less conspicuous than in the female. The colour markings are about the same in the two sexes.

This species is not uncommon about Manhattan, Kansas, in mid-summer. Mature males and females were taken in this locality on August 17. Types are in the collection of the Kansas State Agricultural College and in the National Museum at Washington.

A NEW PROTEOPTERYX.

BY W. D. KEARFOTT, MONTCLAIR, N. J.

PROTEOPTERYX WILLINGANA, sp. nov.

♂, 18 mm. Head, thorax, palpi, antennae and fore wings, same shade of very light tan or pale brownish-fuscous, overlaid with a few blackish brown scales.

Palpi: outer joint short, obtusely pointed; tuft on second joint flattened and appressed, lower scales extending to outer end of outer joint. Head roughly scaled. Eyes black with coppery reflection. Antennae annulated with fuscous and brown. Thorax smooth.



Scheffer, Theo. H. 1904. "A new genus of spiders." *The Canadian entomologist* 36, 305–306. <https://doi.org/10.4039/Ent36305-10>.

View This Item Online: <https://www.biodiversitylibrary.org/item/22119>

DOI: <https://doi.org/10.4039/Ent36305-10>

Permalink: <https://www.biodiversitylibrary.org/partpdf/13640>

Holding Institution

MBLWHOI Library

Sponsored by

MBLWHOI Library

Copyright & Reuse

Copyright Status: NOT_IN_COPYRIGHT

This document was created from content at the **Biodiversity Heritage Library**, the world's largest open access digital library for biodiversity literature and archives. Visit BHL at <https://www.biodiversitylibrary.org>.