

Phasianus elegans, Elliot, Ann. & Mag. Nat. Hist. Oct. 1870, p. 312.

Momien, Western Yunan, 4500 feet; South-western Szechuen (Elliot).

5. Descriptions of three New Species of Diurnal Lepidoptera from Western Yunan collected by Dr. Anderson in 1868. By W. S. ATKINSON, M.A., F.L.S., &c., Director of Public Instruction, Bengal. (Communicated by JOHN ANDERSON, F.L.S., F.Z.S.)

[Received February 7, 1871.]

(Plate XII.)

1. *ÆMONA LENA*, sp. nov. (Plate XII. fig. 1.)

Upperside:—*Fore wings* pale brownish grey, crossed by a dark brown band, interrupted by the nervures from before the apex to near the posterior margin at two-thirds of its length from the base, beyond the band darker, with a slightly marked and incomplete submarginal line, before which is a series of five pale lanceolate blotches between the nervures directed towards the outer margin. All the nervures tinged with yellow and more or less dark-bordered. *Hind wings*: anterior portion from base to outer margin pale, posterior portion bright yellow, crossed by a submarginal series of three dark-bordered white blotches, and a fourth fainter blotch between the nervures, forming a short interrupted band from near the apex to the second median nervure. The submedian nervure fringed from its origin to near its extremity with long yellowish hairs, longest and most conspicuous towards its extremity.

Underside:—Both wings crossed by a dark ferruginous band with sharply defined outer edge from the costa of the fore wing near the apex to near the extremity of the submedian nervure of the hind wing, and having a faintly traced submarginal line, before which is a series of blind white-centred ocelli. The cell of the fore wing crossed near its middle by a curved ferruginous band. Hind wing crossed by a ferruginous band near the base.

Antennæ ferruginous; palpi and legs tawny yellow.

Expanse of wings $3\frac{1}{4}$ inches.

Hab. Yunan. Collected by Dr. J. Anderson, 1868.

2. *ZOPHOESSA ANDERSONI*, sp. nov. (Plate XII. fig. 3.)

Upperside brown. *Fore wing* crossed by two pale bands rising from the costa and directed towards the posterior angle, but not reaching it; the first beyond the extremity of the cell, the second intermediate between the first and the exterior margin. *Hind wing*

with a pale submarginal belt containing a series of incomplete ocelli. The first and third median nervures produced into short tails.

Underside bright ferruginous. *Fore wing* crossed by three silvery-white bands; the first cutting the middle of the cell at right angles, the second and third corresponding to the pale bands on the upperside. Exterior to the third band a series of rudimentary ocelli reduced to four dark points. The exterior marginal lines bordered within by yellow. *Hind wing* crossed by two silvery-white bands; the first cutting the lower part of the cell and corresponding to the first band of the fore wing, the second equidistant between the first and the exterior margin, and corresponding to the second band of the fore wing; at either end of the second band and within it are ocelli, the upper with one and the lower with two white pupils ringed with black. Exterior to the second band a series of four white-pupilled ocelli, their outer edge forming an interrupted yellowish-white band. The exterior margin sharply defined by two fine black lines divided by a yellow line, and bordered within by bright yellow. Fringe yellow.

Antennæ brown, with ferruginous tips.

Expanse of wings $2\frac{1}{4}$ inches.

Hab. Yunan. Collected by Dr. J. Anderson, 1868.

3. PLESIONEURA LILIANA, sp. nov. (Plate XII. fig. 2.)

Upperside dark fuliginous brown. *Fore wing* crossed from the middle of the costa to the posterior angle by a broad white semi-transparent band irregularly angled outwardly and narrowing from the middle hindwards. A recurved series of five angular white spots between the band and the anterior angle. Fringe brown, with a grey spot below the anterior angle, and two others near the posterior angle. *Hind wing* without markings, the fringe barred with greyish white between the nervures.

Underside:—*Fore wing* with band and spots as above, but suffused with grey scales towards the apex, and pale towards the posterior angle below the band. *Hind wing* suffused with greyish scales and crossed by irregular broken bands of grey, which give it a mottled appearance; two white dots near the base.

Palpi grey below, brown above.

Expanse of wings $2\frac{1}{4}$ inches.

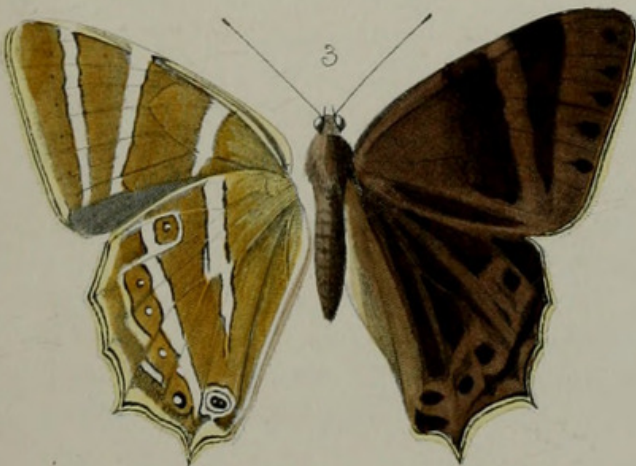
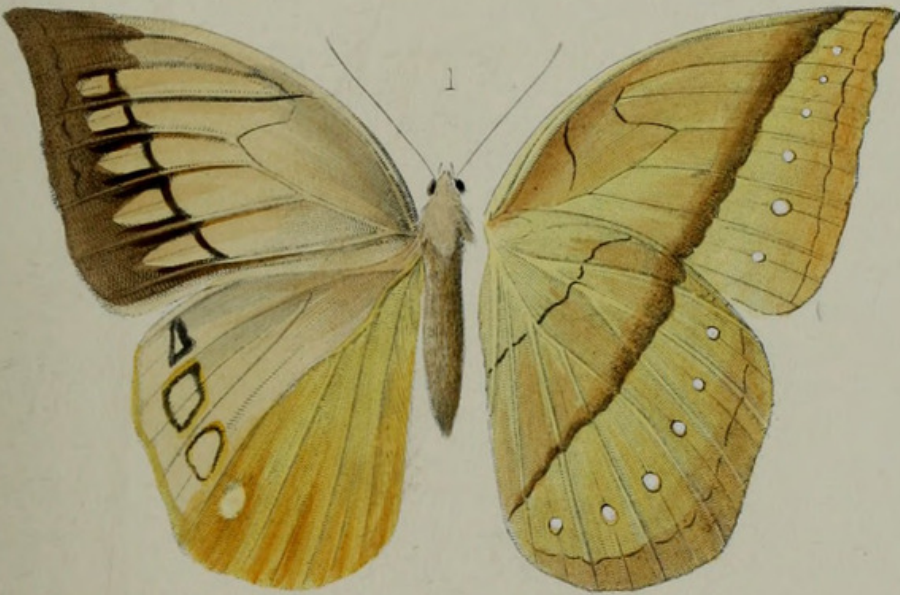
Hab. Yunan. Collected by Dr. J. Anderson, 1868.

DESCRIPTION OF PLATE XII.

Fig. 1. *Æmona lena*, p. 215.

2. *Plesioneura liliana*, p. 216.

3. *Zophoessa andersoni*, p. 215.



E.W. Robinson, Sc. 1871.



Atkinson, W. S. 1871. "5. Descriptions of three New Species of Diurnal Lepidoptera from Western Yunan collected by Dr. Anderson in 1868." *Proceedings of the Zoological Society of London* 1871, 215–216.

View This Item Online: <https://www.biodiversitylibrary.org/item/90542>

Permalink: <https://www.biodiversitylibrary.org/partpdf/144781>

Holding Institution

Natural History Museum Library, London

Sponsored by

Natural History Museum Library, London

Copyright & Reuse

Copyright Status: Public domain. The BHL considers that this work is no longer under copyright protection.

This document was created from content at the **Biodiversity Heritage Library**, the world's largest open access digital library for biodiversity literature and archives. Visit BHL at <https://www.biodiversitylibrary.org>.