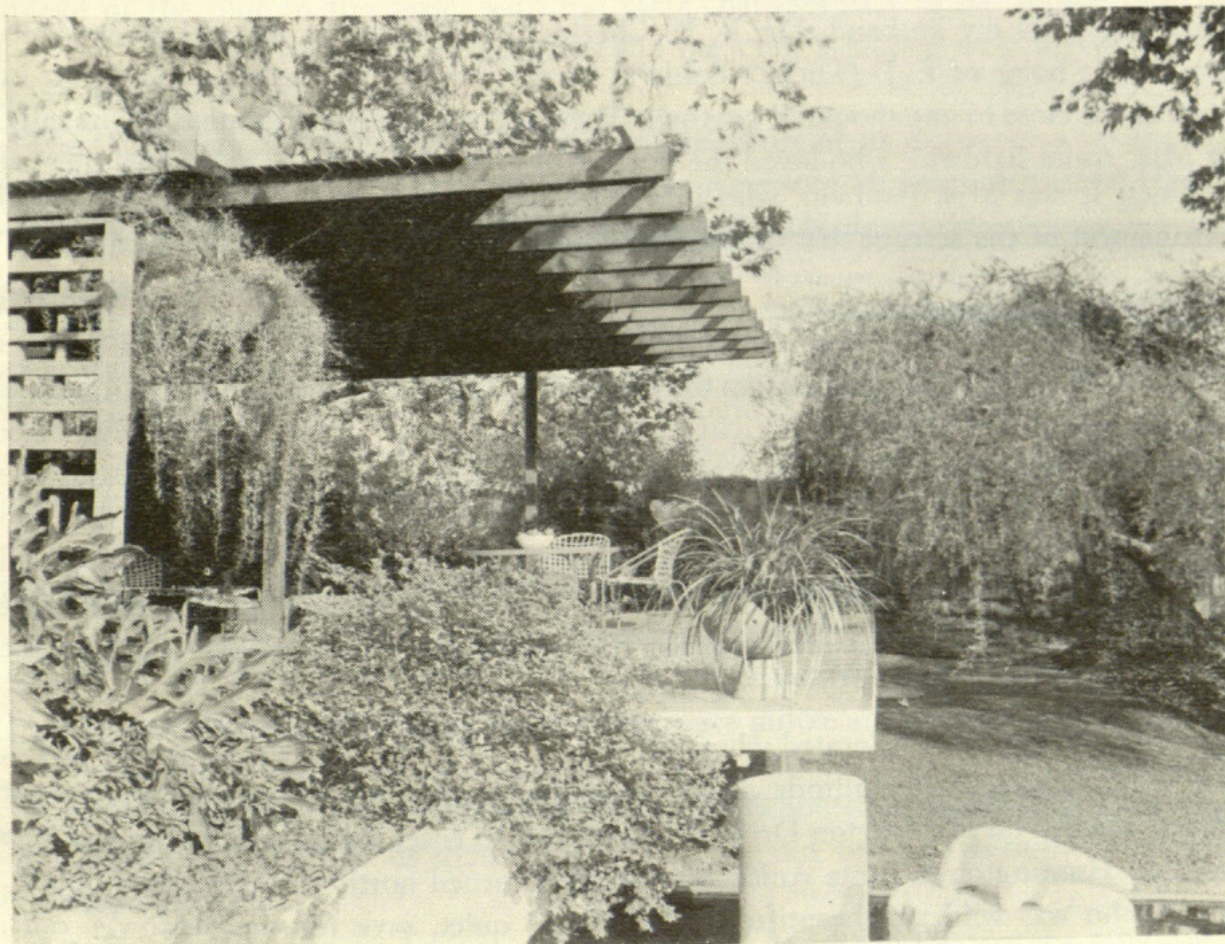


Growing Notes

By GEORGE SPALDING



Loropetalum chinense shown growing over the wall (center foreground) in the Arboretum Demonstration Garden.

NAME — *Loropetalum chinense*

COMMON NAME — Chinese Fringe Flower

CLASSIFICATION — Semi-evergreen Shrub

EXPOSURE — Full sun in Coastal Areas or very light filtered shade in Inland Areas.

COLOR OF FLOWER — White

This beautiful shrub from South East China has been grown in Southern California for many years. However, it appears and disappears from nurseries and is too frequently unavailable. The probable reason is an undeserved reputation for being temperamental. This could be true while plants are in containers, but is certainly not true when planted in the garden. The important factors are good drainage and adequate water.

The Fringe Flower is very hardy. It is one of the finest shrubs for use under windows and in other places where a 3' to 4' shrub is desirable. While 3'-4' is the usual height, plants have been known to grow much taller. It is broad and spreading and can be used to hang over a low wall or bank. Pruning is simple as a light thinning is all that is required to maintain the desired height. *Loropetalum* will also respond well to shearing or formal clipping.

In the fall an added dividend is promised by the leaves which turn bright red, a few at a time—widely scattered over the shrub giving the appearance of brilliant flowers.



Spaulding, George H. 1964. "Growing notes [Winter 1964]." *Lasca leaves* 14, 15.

View This Item Online: <https://www.biodiversitylibrary.org/item/130954>

Permalink: <https://www.biodiversitylibrary.org/partpdf/146778>

Holding Institution

Missouri Botanical Garden, Peter H. Raven Library

Sponsored by

Los Angeles Arboretum

Copyright & Reuse

Copyright Status: In copyright. Digitized with the permission of the rights holder.

Rights Holder: The Arboretum Library at the Los Angeles County Arboretum and Botanic Garden

License: <http://creativecommons.org/licenses/by-nc-sa/4.0/>

Rights: <https://www.biodiversitylibrary.org/permissions>

This document was created from content at the **Biodiversity Heritage Library**, the world's largest open access digital library for biodiversity literature and archives. Visit BHL at <https://www.biodiversitylibrary.org>.