

GROUNDS DEVELOPMENT AND CAPITAL IMPROVEMENTS

THE LOS ANGELES STATE AND COUNTY ARBORETUM HAS JUST PAST THROUGH ANOTHER SUCCESSFUL YEAR --- A YEAR MARKED BY CONSIDERABLE ADVANCEMENT TOWARDS BRINGING INTO LIVING REALITY, MORE AND MORE OF THE MASTER PLAN.

A BRIEF SURVEY COVERING THE VARIOUS GEOGRAPHICAL AND SPECIAL SECTIONS OF THE ARBORETUM WILL INDICATE THAT OUR HORTICULTURAL PROGRAM HAS BEEN CARRIED ON TO THE FULLEST PRACTICAL EXTENT WITH THE EXISTING FACILITIES.

BALDWIN AVENUE ESPLANADE

THE FORTY FOOT WIDE STRIP ON THE EAST SIDE OF BALDWIN AVENUE, FROM COLORADO BOULEVARD SOUTH TO THE RACE TRACK FENCE, BELONGS TO THE ARBORETUM. TWO YEARS AGO, WE PLANTED A HEDGE OF CEANOTHUS AND ACACIAS BETWEEN THIS AREA AND THE ADJACENT PRIVATE PROPERTIES TO THE EAST. THIS HEDGE IS APPROXIMATELY SIX FEET HIGH NOW, AND GIVES PROMISE OF EXCELLENT BLOOM NEXT SPRING. WE'VE RECEIVED NUMEROUS COMMENTS OF APPROVAL AND REAL PLEASURE FROM THE RESIDENTS WHOSE PROPERTY BORDERS THIS PLANTING.

ON THE WEST SIDE OF BALDWIN AVENUE, FROM COLORADO BOULEVARD SOUTH TO THE MAIN ENTRANCE, THERE ARE TWO TYPES OF DECORATIVE AND VALUABLE HORTICULTURAL DISPLAY PLANTINGS.

FIRST, IN THE NORTHWEST CORNER (COLORADO & BALDWIN) IS A COLLECTION OF SPECIMEN ACACIAS. THE STRIKING GLOW OF COLOR PRODUCED BY THE MYRIADS OF YELLOW BALLS OF FLOWERS THIS SPRING, RESULTED IN MANY INQUIRIES BY THE PUBLIC FOR INFORMATION CONCERNING THE KIND OF PLANTS AND METHODS FOR THEIR CULTURE. ALTHO, THIS PLANTING IS BUT TWO YEARS OLD, IT HAS NEEDED THINNING, AND WILL AGAIN BE A BEAUTY SPOT NEXT YEAR.

SECOND, THE DIVIDING STRIP, BETWEEN PARKING LOT AND BALDWIN AVENUE, AND THE FENCE LINE AREA JUST WEST OF THE PARKING LOT, HAS BEEN ENHANCED BY LOW MAINTENANCE PLANTINGS. THE DIVERSIFICATION IN PLANT SPECIES OF WIDE RANGE GIVES COLOR HERE AND THERE ALONG THE ESPLANADE THROUGHOUT THE YEAR.

WE'RE JUSTLY PROUD OF THE GARDENER WHO HAS BEEN IN CHARGE OF THIS PARTICULAR AREA FOR THE PRIDE HE OBVIOUSLY TAKES IN MAINTAINING THE ATTRACTIVE "FRONT YARD" OF THE ARBORETUM.

AUSTRALIAN SECTION

MORE THAN 200 EUCALYPTUS (IN SOME 30 SPECIES AND VARIETIES) WERE ADDED TO THIS BIT OF AUSTRALIA IN ARCADIA. MEASUREMENTS OF SOME OF THE ESTABLISHED



## GROUNDS DEVELOPMENT AND CAPITAL IMPROVEMENTS - continued

TREES, INDICATED THAT CERTAIN SPECIMENS GREW MORE THAN SIX FEET IN A SINGLE YEAR. WE'VE BEEN A LITTLE SHY OF ADEQUATE WATER LINES IN THIS AREA --- 500 FEET OF HOSE WERE NEEDED TO REACH CERTAIN NEW PLANTINGS --- HOWEVER, THIS DID NOT DETER OUR PROGRESS. NEXT YEAR WE FEEL CERTAIN SUCH CONDITIONS WILL BE CORRECTED.

LAST YEAR, THE COLORFUL BOTTLEBRUSH GROUP WAS ALMOST UNNOTICED. THIS YEAR, NO ONE COULD MISS THE LACY, NEEDLE-LIKE FOLIAGE OR THE VIVID REDS, SOFT PINKS, THE MAGENTAS, OR WHITE "BRUSHES" (THE FLOWERS) OF THIS COLLECTION. WE HAVE LEARNED SOMETHING OF THE WATER REQUIREMENTS OF THESE PLANTS WHILE ENJOYING THEIR BLOOMS.

ANOTHER AUSTRALIAN NATIVE -- ANIGOZANTHUS -- WAS TRANSPLANTED FROM A FIELD NURSERY TO ITS PERMANENT HOME IN THIS SECTION. RE-ESTABLISHMENT WAS RAPID AND EXTREMELY SUCCESSFUL.

THERE IS AN ACACIA COLLECTION INSIDE THE GROUNDS, AS WELL AS, OUTSIDE. SOME OF THE MORE RARE SPECIES OF THIS GROUP BLOOMED FOR THE FIRST TIME. RESULTING SEED WILL BE COLLECTED FOR OUR OWN USE AND FOR EXCHANGE PURPOSES.

### SOUTH AFRICAN SECTION

SOUTH AFRICA IS THE HOME OF MANY BRIGHTLY FLOWERING PLANTS BELONGING TO THE COMPOSITE FAMILY. A VIGOROUS BEGINNING HAS BEEN MADE IN BRINGING THIS SECTION UP TO SUCH COLOR. BOTH WATERING PROBLEMS AND SOIL STUBBORNNESS HAVE PLAGUED THIS AREA FROM THE BEGINNING. THE YOUNG ARBORETUM GARDENER IN CHARGE OF THIS SECTION HAS DONE VERY COMMENDABLE WORK IN THE INITIAL STAGES OF DEVELOPING "SOUTH AFRICA".

### MEDITERRANEAN SECTION

THIS SECTION IS THE LEAST DEVELOPED AND MOST OBVIOUSLY SO. BUT THERE'S AN EXCELLENT REASON. THROUGH A GREATER PORTION OF THIS AREA, THE ARCADIA WASH FLOOD CONTROL CHANNEL WILL BE CONSTRUCTED, DURING 1956. WE HAVE TRIED TO ADD SOME INTEREST HERE, NEVERTHELESS, BY PLANTING NATIVE CISTUS OR ROCK ROSE SPECIES IN SMALL BAYS ALONG THE ROAD EDGE.

### JUNGLE SECTION

THE SCREECHING OF MONKEYS, THE HOOTING OF OWLS, THE ROAR OF A LION AND POSSIBLY A HYENA'S LAUGH ARE SOUNDS OFTEN HEARD FROM THE JUNGLE. TRULY, THESE NOISES ARE EXPRESSIONS OF IMAGINATION BY THE CHILDREN TOURING THE



## GROUND'S DEVELOPMENT AND CAPITAL IMPROVEMENTS - continued

JUNGLE. IT'S A FASCINATING, UNIQUE, AND EVER POPULAR SPOT. IT'S THE ONLY REAL JUNGLE IN SOUTHERN CALIFORNIA. EACH YEAR, WE ADD SPECIMEN PLANTS OF A TROPICAL NATURE -- COFFEE TREES, GINGER, SWAMP IRIS, BIRDS-OF-PARADISE, BEGONIAS, EPIPHYLLUMS -- TO HIGH LIGHT WITH COLOR (ALSO TO TEST FOR HARDINESS) THIS AREA LIGHTED IN SHADES OF GREEN.

APPROACHES TO THE EAST AND WEST ENDS OF THE JUNGLE HAVE BEEN PLANTED WITH ADDITIONAL TROPICAL SPECIES THIS YEAR, AND IN TIME THESE PLANTS WILL BECOME THE "LOW" JUNGLE.

A SPECIMEN COLLECTION OF ORNAMENTAL GRASSES -- PAPYRUS, PAMPUS, LEMON -- LEAD AWAY FROM THE WEST END OF THE JUNGLE ALONG THE EDGE OF THE LAGOON.

### BAMBOO & PALM SECTION

SOUTH ALONG BALDWIN AVENUE FROM THE MAIN ENTRANCE OF THE ARBORETUM AND CONTINUING WEST ALONG THE SOUTH FENCE TO THE FOOT OF TALLAC KNOLL, SINOCALAMUS OLDHAMI, ONE OF THE TALLER BAMBOOS, WAS PLANTED THREE YEARS AGO TO FORM A HEDGE. THIS PLANTING IS RAPIDLY FILLING IN, SCREENING FROM THE ARBORETUM VISITOR BOTH HIGHWAY NOISE AND THE WORKING END OF A LOCAL RACE TRACK.

ADDITIONAL SPECIES OF BAMBOOS AND PALMS (SEE ARBOR WEEK) HAVE BEEN PLANTED IN THIS SECTION, INCREASING THE VALUE AND INTEREST OF THESE TWO PLANT TYPES WHICH ARE NOT OF THE SHOWY FLOWER VARIETY.

### DOMESTIC LANDSCAPE SECTION

THIS AREA, PLANTED EARLY IN THE ARBORETUM'S DEVELOPMENT IS BEGINNING TO TAKE ON THE LOOK OF MATURITY. PLANTS FROM ALL PARTS OF THE WORLD WHICH GIVE PROMISE OF LANDSCAPE VALUE ARE BEING PLANTED TOGETHER. SOME OF THEM WILL BE FOUND ELSEWHERE IN THEIR PROPER GEOGRAPHICAL SETTINGS.

IN THIS AREA ALSO IS A LESSON IN GENETICS COMBINED IN ONE PLANTING. ONE PACKET OF SEED PRODUCED BOTH LOW AND HIGH GROWING SHRUBS. A FORM OF ICE PLANT, THE FLOWERS OF WHICH BLAZE WHEN TOUCHED BY THE BRIGHT SUN. REDS, YELLOWS, ORANGE, MAGENTA, LAVANDER, AND PINK FAIRLY BLIND THE OBSERVER AT NOON. THE MANY PETALLED FLOWERS SEEM COATED WITH A WAXY SUBSTANCE WHICH ACCOUNTS FOR THE GLITTER AND SPARKLE. CUTTINGS FROM THESE PLANTS HAVE BEEN PLANTED TO FORM LOW BORDERS ALONG THE MAIN ENTRANCE AND SPOTS IN THE NORTH BALDWIN PARKING STRIP.

### OLD FASHIONED ROSE GARDEN

A COMPANION OF THE HERB GARDEN, BUT AS YET VERY EMBRYONIC. THIS GARDEN WILL FEATURE ROSES INTRODUCED PRIOR TO 1905.



ALSO BLOOMED THIS YEAR. IN VARIOUS SPOTS ARE PLANTED THE SPECIMENS OF THE  
 FIGUS GROUP -- A DONATION OF DR. CORBET

### HERB GARDEN



IT MAY WELL BE THAT THE HERB GARDEN IS THE "STAR" OF THE ARBORETUM THIS YEAR.

BASIC GRADING WAS COMPLETED IN APRIL AND AS WE REACH THE END OF JUNE, THE GENERAL PATTERN IS CLEARLY EVIDENT. THE OUTLINE OF THE KNOT GARDEN HAS EMERGED AND THE KITCHEN GARDEN IS WELL ALONG. PRELIMINARY SKETCHES FOR A DIPPING WELL IN THE KITCHEN GARDEN HAVE BEEN DRAWN AND THE OUTLINE FOR THE MEDIEVAL WALLED GARDEN HAS BEEN DEVELOPED. THE HEADERS FOR THE PATHS THROUGHOUT THE GARDEN HAVE

BEEN PUT IN AND THE MAJOR PATHS COVERED WITH CRUSHED ROCK. THE PATTERN AND PLAN OF SUCH A DIFFERENT GARDEN WILL, IN ITSELF, STRIKE THE MODERN VISITOR AS UNIQUE AND PLEASURABLE: BUT MORE THAN THIS --- HERE'S A USEFUL BIT OF HORTICULTURE WHICH REACHES BACK TO THE VERY EARLIEST OF BOTANY AND PLANT LORE. THIS GARDEN IS A LIVING SYMBOL OF MAN'S PROGRESS (HORTICULTURALLY AT LEAST) THROUGH THE AGES.

WE ARE ALL GRATEFUL TO MEMBERS OF THE SOUTHERN CALIFORNIA UNIT OF THE HERB SOCIETY OF AMERICA FOR THEIR WILLINGNESS AND ACTUAL ASSISTANCE IN DEVELOPING THIS GARDEN. THEY NOT ONLY SHOULDERED THE FINANCIAL BURDEN OF THE BOXWOOD PLANTS, THE REDWOOD HEADERS, AND THE CRUSHED ROCK; BUT IN ADDITION, FURNISHED DATA ON THE CULTURE OF HERBS. MISS EDNA NEUGABAUER GAVE US AN OUTSTANDING COLLECTION OF LAVANDER SPECIES AND VARIETIES. MRS. A. D. RICHARDSON, 1954-55 PRESIDENT, HAS DIRECTED THE SOCIETY'S WORK, GIVING CONSTANT ENCOURAGEMENT TO THE ARBORETUM COMMITTEE ABLY HEADED BY MISS RUTH RANDALL. WE EXTEND OUR SINCERE THANKS TO ALL THE MEMBERS AND LOOK FORWARD TO ANOTHER FINE YEAR OF COOPERATION WITH THE SOUTHERN CALIFORNIA UNIT UNDER THEIR NEW PRESIDENT, MRS. CECELIA WILLARD WILCOX.

### TROPICAL GARDEN

HERE, WE REALLY ARE EXPERIMENTING! IN THIS ABANDONED EARTH RESERVOIR, ATOP TALLAC KNOLL, THE CYMBIDIUMS PLANTED ON THE SLOPING INNER WALL BLOOMED PROFUSELY THIS YEAR. FURTHER, AROUND THE SIDE, THE SPECIES BEGONIAS IMPART YEAR AROUND COLOR. WIRED TO TRUNK AND LIMB, HARDY ORCHIDS AND BROMELIADS ARE BEING TESTED FOR A LIFE OUT-OF-DOORS, UNDER SOME PROTECTION. SOME OF THESE



## GROUND DEVELOPMENT AND CAPITAL IMPROVEMENTS - continued

ALSO BLOOMED THIS YEAR. IN VARIOUS SPOTS ARE PLANTED TREE SPECIMENS OF THE FICUS GROUP --- A DONATION OF DR. CONDIT ---.

THE REALLY OUTSTANDING EVENT IN THIS AREA WAS THE LEAFING OUT AND BLOOMING OF THE SOUTH AMERICAN TABEBUIAS (SEE ARBORETUM PUBLICATIONS, DR. SEIBERT). IF THESE TREES CAN BE GROWN TO MATURITY, THE ARBORETUM WILL HAVE BROUGHT A SPECTACULAR SPLASH OF COLOR AND GRACEFUL BEAUTY TO SOUTHERN CALIFORNIA.

MUCH INFORMATION WILL BE GLEANED FROM THIS SPECIAL SECTION, VALUABLE TO THE HOME OWNER WHO WISHES COLOR AND INTERESTING FOLIAGE WITH HARDINESS.

### THE BUILDINGS

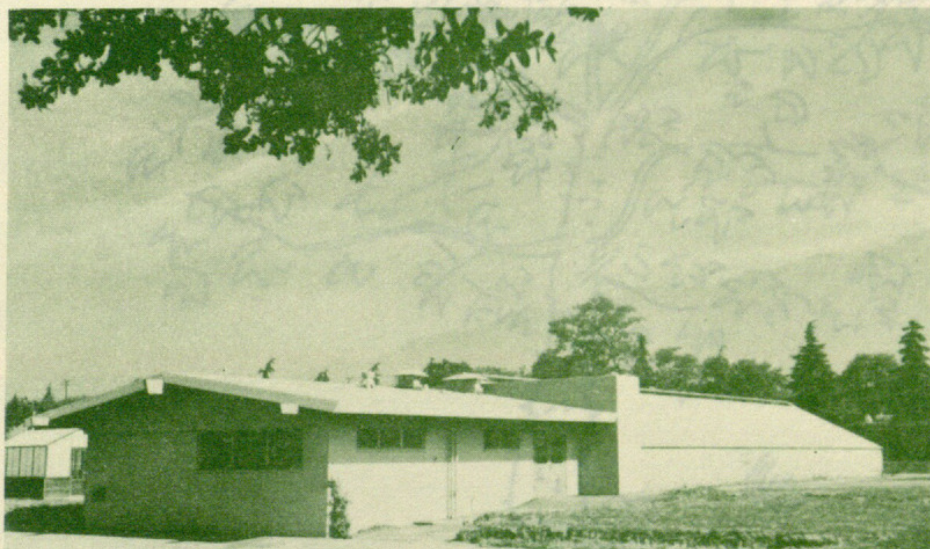
THIS FISCAL YEAR SAW THE COMPLETION OF THREE PERMANENT BUILDINGS. 1) THE HEADHOUSE, CONTAINING A POTTING ROOM, SHOWER AND LOCKER ROOM, PLANT RECORDS OFFICE AND UTILITY ROOM WHICH HOUSES THE STEAM GENERATING PLANT USED FOR STERILIZING SOIL, POTS, AND OTHER EQUIPMENT. 2) THE PUBLIC RESTROOMS. 3) THE FIRST WING OF OUR SERVICE UNIT. THIS UNIT CONTAINS DOUBLE GARAGES, A TOOL ROOM, RESTROOM, AND AN ELECTRICAL VAULT. ALL ELECTRICAL AND TELEPHONE WIRES ON THE ARBORETUM GROUNDS WILL ENTER FROM THIS VAULT. THESE NEW BUILDINGS HAVE ENABLED US TO INCREASE OUR EFFICIENCY OF OPERATION AND THE PLANTS WILL MOVE INTO THE PERMANENT PLANTINGS AT AN EVER INCREASING PACE.

AS WITH ANY VIGOROUSLY GROWING ORGANIZATION, BUILDING FACILITIES ALWAYS SEEM TO LAG BEHIND THE IDEAS AND AMBITIONS OF THE PERSONNEL. ADDITIONAL GREENHOUSE AND SERVICE SPACE AND EQUIPMENT ARE URGENTLY NEEDED IN SPITE OF THE NEWNESS OF THE ABOVE CONSTRUCTIONS.

WE FEEL CONFIDENT THAT A FORWARD LOOKING COUNTY ADMINISTRATION AND INCREASING PUBLIC USE AND INTEREST PRESAGES A BRIGHT FUTURE FOR THE ARBORETUM.

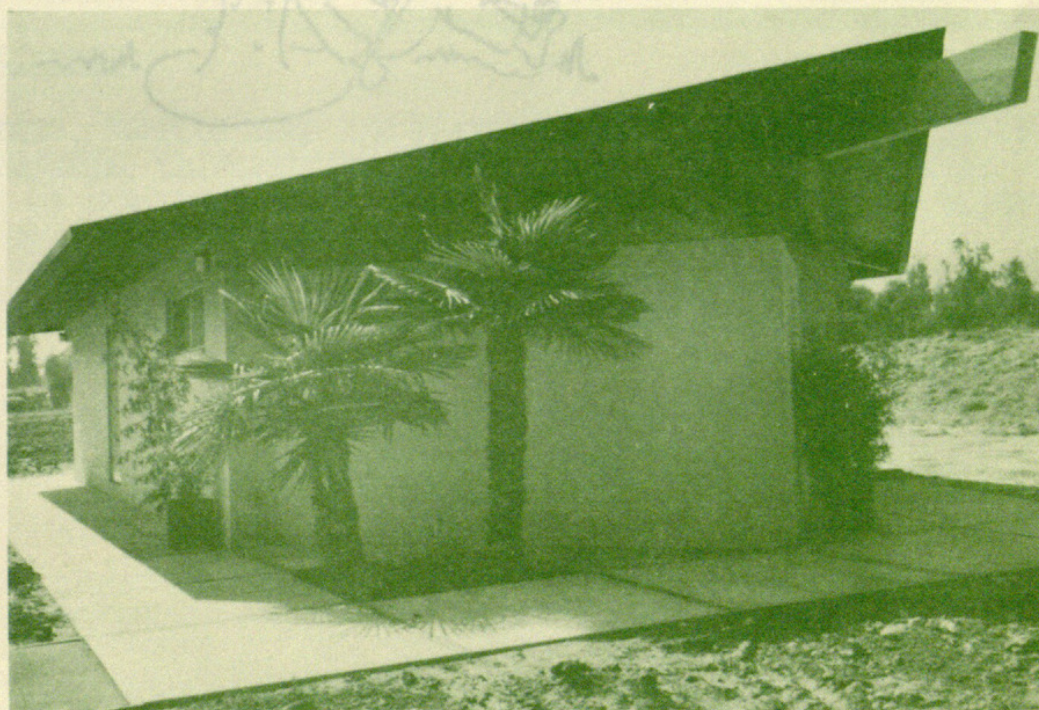


SERVICE  
BUILDING



HEADHOUSE  
AND  
GREENHOUSE

PUBLIC  
RESTROOM







1955. "Grounds development and capital improvements." *LASCA miscellanea* 3, 6–11.

**View This Item Online:** <https://www.biodiversitylibrary.org/item/129408>

**Permalink:** <https://www.biodiversitylibrary.org/partpdf/146977>

**Holding Institution**

The Arboretum Library at the Los Angeles County Arboretum and Botanic Garden

**Sponsored by**

Good Family Foundation

**Copyright & Reuse**

Copyright Status: In copyright. Digitized with the permission of the rights holder.

License: <http://creativecommons.org/licenses/by-nc-sa/3.0/>

Rights: <https://www.biodiversitylibrary.org/permissions>

This document was created from content at the **Biodiversity Heritage Library**, the world's largest open access digital library for biodiversity literature and archives. Visit BHL at <https://www.biodiversitylibrary.org>.