

## Taxonomic variation in larval mandibular structure in Palaeartic Notodontidae (Noctuoidea)

IRINA V. DOLINSKAYA

Schmalhausen Institute of Zoology, National Academy of Sciences of Ukraine, UA-01601 Kiev MSP, Ukraine; e-mail: idolinskaya@izan.kiev.ua

**Abstract.** The mandibles of the 1<sup>st</sup> to 5<sup>th</sup> instar larvae of 61 species belonging to 32 genera of Palaeartic Notodontidae from Ukraine and Primorskii krai (Far East of Russia) were examined with the use of a scanning electron microscope. The characters of the mandibular margin, retinaculum and mandibular carina are discussed. A comparative morphological analysis is provided for all these structures. Apomorphic and plesiomorphic states of the different characters are argued in relation to the different taxa. The results are compared to the recent classifications of Notodontidae.

**Zusammenfassung.** Die Mandibeln der ersten bis fünften Larvenstadien von 61 Arten und 32 Gattungen paläarktischer Notodontidae aus der Ukraine und dem Primorski Krai in Russland sind rasterelektronenmikroskopisch untersucht. Merkmale des Mandibelrandes, des Retinaculums und der Mandibelcarina werden diskutiert. Eine vergleichende morphologische Analyse wird für diese Merkmale gegeben. Die apomorphen und plesiomorphen Zustände der einzelnen Merkmale werden in Beziehung zu den einzelnen Taxa diskutiert. Die Ergebnisse werden mit rezenten Klassifikationen der Notodontidae verglichen.

**Résumé.** Les mandibules des chenilles de plusieurs Notodontidés paléarctiques ont été étudiés à l'aide du microscope électronique à balayage. L'étude est fondée sur les chenilles des stades I-V appartenant à 61 espèces de 32 genres provenant de l'Ukraine et de la Région d'Ussuri (au sud de l'Extrême est de la Russie). La morphologie des caractères tels que la marge mandibulaire, le retinaculum et la carène mandibulaire a été comparée. Une argumentation concernant les états de ces caractères en tant qu'apomorphies et plésiomorphies est fournie. Les récentes classifications des Notodontidés sont comparées en regard des résultats obtenus.

### Introduction

The mandibles of final instar notodontid larvae have been described in certain publications (Godfrey 1984; Godfrey et al. 1989; Miller 1991), but our knowledge concerning other instars, particularly the morphological peculiarities of the first instar, is insufficient. Faunal coverage is also inadequate; most information treats notodontid species from North America (Weller 1987; Dockter 1993). This study is an attempt to, at least partly, close this gap.

### Materials and Methods

This research is based on material that I have collected in Ukraine and Primorskii krai (Far East of Russia). Eggs were obtained from females captured in the field. Hatched larvae were reared to pupae. The epicrania left by caterpillars after moulting as well as fresh material stored in alcohol were studied. Mandibles were separated from the epicranium and then examined with a scanning electron microscope (SEM) as well as a binocular light microscope (MBS-9). The mandibular structures of 1<sup>st</sup> through 5<sup>th</sup> larval instars belonging to 61 notodontid species from the following genera were studied: *Euhampsonia* Dyar, *Furcula* Lamarck, *Uropyia* Staudinger, *Stauropus* Germar, *Cnethodonta* Staudinger, *Harpyia* Ochsenheimer, *Dicranura* Reichenbach, *Fentonia* Butler, *Drymonia* Hübner, *Notodonta* Ochsenheimer, *Peridea* Stephens, *Nerice*



Walker, *Semidonta* Staudinger, *Pheosia* Hübner, *Leucodonta* Staudinger, *Lophocosma* Staudinger, *Pheosiopsis* Bryk, *Shaka* Matsumura, *Pterostoma* Germar, *Ptilodon* Hübner, *Lophontosia* Staudinger, *Hagapteryx* Matsumura, *Allodonta* Staudinger, *Hexafrenum* Matsumura, *Epodonta* Matsumura, *Phalera* Hübner, *Spatalia* Hübner, *Gluphisia* Boisdual, *Pygaera* Ochsenheimer, *Gonoclostera* Butler, *Clostera* Samouelle and *Micromelalopha* Nagano. The taxonomic arrangement of these genera follows Schintlmeister (1989) (Table 1).

## Results

Table 1 gives a summary of the distribution of the character states found during my investigations of the mandibular margin, retinaculum, and mandibular carina of the investigated Palaearctic genera of Notodontidae.

**Mandibular margin.** The presence of mandibles with a serrate cutting edge in the first larval instar, which then becomes smooth in the last instar, has been previously recorded (Weller 1987; Godfrey et al. 1989). Miller (1991) considered this smooth mandibular margin of Notodontidae to be an apomorphic character of the family.

The 1<sup>st</sup> instar mandibular margin in most species possesses 6 acutely-angled denticles. These are either narrow or broad and they vary in length. The middle denticles are the largest, while the 6<sup>th</sup> is usually indistinct (Fig. 1).

First instar larvae show taxonomic differences in mandibular edge structure. First of all, there is a trend toward smoothing out of the cutting edge. Thus, in most species the first instar mandibular edge shows 6 acutely-angled narrow denticles (*Hagapteryx*, *Pheosiopsis*, *Furcula*, and others). Some species of Notodontinae have smooth, broad and more rounded denticles (e.g., *Pheosia*, *Phalera*, Fig. 2). In some taxa, the number of denticles is reduced to 4, the denticles are broad (perhaps due to fusion of separate denticles) and flattened. Thus, in genus *Cnethodonta* there are 4 large broad denticles (Fig. 3), while the denticles in species of *Stauropus* are almost indistinct (Fig. 4). Weller (1987: 189, fig. 2) recorded only 3 finger-like denticles for *Litodonta hydromeli* Harvey. Since the third denticle is broad, it is assumed to represent a fusion of two denticles.

My studies show that the mandibular margin of Notodontidae becomes smooth in the 2<sup>nd</sup> through 5<sup>th</sup> instars (Fig. 5). However, in some genera serrate mandibles do not completely disappear by the 2<sup>nd</sup> instar, but instead gradually disappear during subsequent instars, becoming absent by the final instar. For example, *Clostera*, *Gonoclostera*, *Pygaera*, *Micromelalopha*, and *Gluphisia* have 6 denticles in the 1<sup>st</sup> instar (Figs 6, 7) and retain 5 or 6 of them in the 2<sup>nd</sup> instar, though they become broader (Fig. 8). These genera have a smooth mandibular margin beginning in the 3<sup>rd</sup> instar.

In *Nerice* and *Dicranura*, 6 denticles persist in the 2<sup>nd</sup> instar. In *Nerice* they are short and rounded (Figs 9, 10) in the 2<sup>nd</sup> instar, but are expressed as 6 fused but distinct denticles in subsequent instars (Fig. 11). In *Dicranura*, the 2<sup>nd</sup> instar shows 5 or 6 indistinct denticles (Fig. 12). The mandibular margin in the 3<sup>rd</sup> instar is expressed as 5 fused less distinct denticles (Fig. 13), while the 4<sup>th</sup> instar mandibular edge is wavy (Fig. 14).



Tab. 1. Character states of the larval mandibles of Palaearctic Notodontidae.

Species	Mandibular margin			Retinaculum	Mandibular carina
	1 <sup>st</sup> instar	2 <sup>nd</sup> instar	3–5 <sup>th</sup> instars		
<i>Euhampsonia cristata</i> (Butler)	6A	S	S	2 i, L	E
<i>Euhampsonia splendida</i> (Oberthür)	6A	S	S	2 i, L	E
<i>Furcula furcula</i> (Clerck)	6A	S	S	2 i, L	E
<i>Furcula bicuspis</i> (Borkhausen)	6A	S	S	2 i, L	E, M
<i>Furcula bifida</i> (Brahm)	6A	S	S	2 i, L	E
<i>Uropygia meticulodina</i> (Oberthür)	6A	S	S	2 i, H	E
<i>Stauropus fagi</i> (Linnaeus)	4B	S	S	1 i, L	E, M
<i>Stauropus basalis</i> Moore	4B	S	S	1 i, L	E
<i>Cnethodonta grisea</i> Staudinger	4B	S	S	1 i, L	E, M
<i>Harpyia milhauseri</i> (Fabricius)	6A	S	S	2 i, L	E
<i>Harpyia umbrosa</i> (Staudinger)	6A	S	S	2 i, L	E
<i>Dicranura ulmi</i> (Denis & Schiffermüller)	6A	T	W**	3 i, H	M
<i>Fentonia ocypete</i> (Bremer)	6A	S	S	2 i, L	E
<i>Drymonia dodonaea</i> [Denis & Schiffermüller]	6A	S	S	2 i, L	E
<i>Notodonta torva</i> (Hübner)	6A	S	S	2 i, L	E
<i>Notodonta dromedarius</i> (Linnaeus)	6A	S	S	2 i, L	E
<i>Notodonta dembowskii</i> Oberthür	6A	S	SW	2 i, L	E
<i>Notodonta tritophus phoebe</i> (Siebert)	6A	S T	S	2 i, L	E
<i>Notodonta ziczac</i> (Linnaeus)	6A	S	S	2 i, L	E
<i>Peridea anceps</i> (Goeze)	6A	S	S	2 i, L	E
<i>Peridea lativitta</i> (Wileman)	6A	S	S	2 i, L	E
<i>Peridea elzet</i> Kiriakoff	6A	S	S	2 i, L	E
<i>Peridea graeseri</i> (Staudinger)	6A	S	S	2 i, L	E



Tab. 1. Continuation.

Species	Mandibular margin			Retinaculum	Mandibular carina
	1 <sup>st</sup> instar	2 <sup>nd</sup> instar	3–5 <sup>th</sup> instars		
<i>Peridea moltrechti</i> (Oberthür)	6A	S	S	2 i, L	E
<i>Peridea oberthueri</i> (Staudinger)	6A	S	S	2 i, L	E
<i>Nerice davidi</i> Oberthür	6A	T	T	2 i, H	M
<i>Nerice leechi</i> Staudinger	6A	T	T	2 i, H	M
<i>Semidonta biloba</i> (Oberthür)	6A	S	S	2 i, L	E
<i>Pheosia tremula</i> (Clerck)	6B	S	S	2 i, L	E
<i>Pheosia gnoma</i> (Fabricius)	6B	ST	S	2 i, L	E, M
<i>Pheosia rimosa</i> Packard	6B	S	S	2 i, L	E
<i>Leucodonta bicoloria</i> (Den. & Schiffermüller)	6A	S	S	2 i, L	E
<i>Lophocosma atriplaga</i> Staudinger	6A	S	S	2 i, L	E
<i>Pheosiopsis cinerea</i> (Butler)	6A	S	S	2 i, L	E
<i>Shaka atrovittatus</i> (Bremer)	6A	S	S	2 i, L	E
<i>Pterostoma palpina</i> (Clerck)	6A	ST	S	2 i, L	E
<i>Pterostoma sinicum</i> Moore	6A	S	S	2 i, L	E
<i>Pterostoma griseum</i> (Bremer)	6A	S	S	2 i, L	E
<i>Ptilodon capucina</i> (Linnaeus)	6A	S	S	2 i, L	E, M
<i>Ptilodon hoegei</i> (Graeser)	6A	S	S	2 i, L	E
<i>Ptilodon cucullina</i> (Denis & Schiffermüller)	6A	S	S	2 i, L	E
<i>Ptilodon ladislai</i> (Oberthür)	6A	S	S	2 i, L	E
<i>Lophontesia cuculus</i> (Staudinger)	6A	S	S	2 i, L	E
<i>Hagapteryx admirabilis</i> (Staudinger)	6A	S	S	2 i, L	E
<i>Allodonta plebeja</i> (Oberthür)	6A	S	S	2 i, L	E, M
<i>Hexafrenum leucodera</i> (Staudinger)	6A	S	S	2 i, L	E, M



Tab. 1. Continuation.

Species	Mandibular margin			Retinaculum	Mandibular carina
	1 <sup>st</sup> instar	2 <sup>nd</sup> instar	3–5 <sup>th</sup> instars		
<i>Epodonta lineata</i> (Oberthür)	6A	ST	SW	2 i, L	E
<i>Phalera bucephala</i> (Linnaeus)	6B	S	S	2 i, LH	M
<i>Spatalia argentina</i> (Denis & Schiffermüller)	6A	S	S	2 i, L	E
<i>Spatalia doerriesi</i> Graeser	6A	S	S	2 i, L	E
<i>Spatalia plusiotis</i> (Oberthür)	6A	S	S	2 i, L	E
<i>Spatalia dives</i> Oberthür	6A	S	S	2 i, L	E, M
<i>Gluphisia crenata</i> (Esper)***	6A	T	S	3–4 i, L	E
<i>Pygaera timon</i> (Hübner)	6A	T	S	4 i, L	M
<i>Gonoclostera timoniorum</i> (Bremer)	6A	T	S	2 i, L	E
<i>Clostera curtula</i> (Linnaeus)	6A	T	S	2 i, L	M
<i>Clostera albosigma curtuloides</i> (Erschoff)	6A	T	S	2 i, L	M
<i>Clostera pigra</i> (Hufnagel)	6A	T	S	2 i, L	M
<i>Clostera anachoreta</i> [Denis & Schiffermüller]	6A	T	S	2 i, L	M
<i>Clostera anastomosis</i> (Linnaeus)	6A	T	S	2 i, L	M
<i>Micromelalopha troglodyta</i> (Graeser)	6A	T	S	2 i, L	M

Mandibular margins with 6 acutely-angled narrow denticles (6A), with 6 broad, flattened denticles (6B), with 4 broad, flattened denticle (4B), smooth (S), toothed (T), or wavy (W).

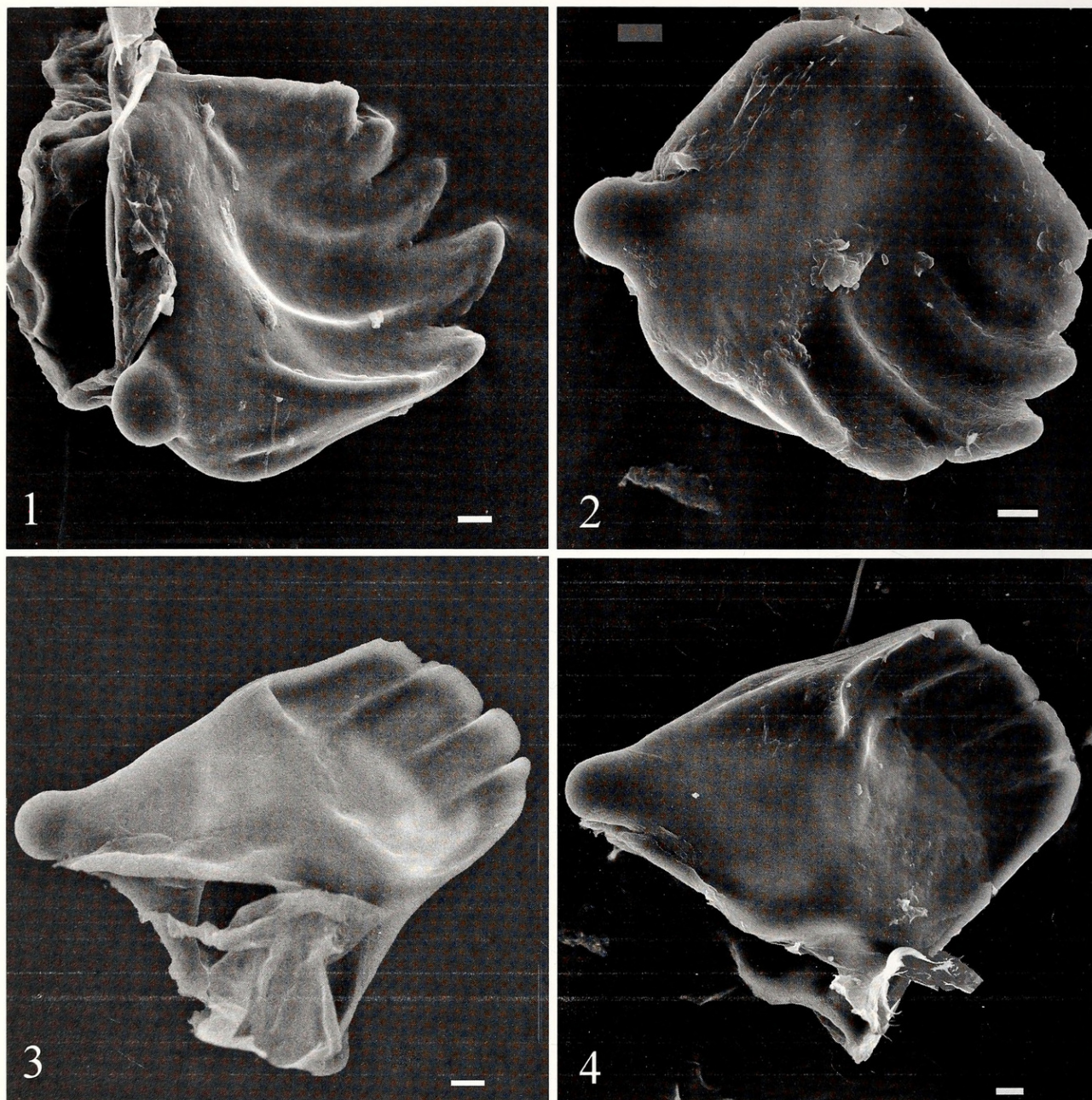
Retinaculum flattened or with small projection (L) or with large, high comb (H). The presence of a retinaculum in the 1<sup>st</sup> instar (1i), in the 2<sup>nd</sup> instar (2i), in the 3<sup>rd</sup> instar (3i), in the 4<sup>th</sup> instar (4i).

Mandibular carina weakly expressed (E) or clearly expressed (M). Average situation between two extremes (ST, SW, EM).

\*\* The mandibular margin in the 3<sup>rd</sup> instar is expressed as 5 fused, less distinct denticles, while the 4<sup>th</sup> instar mandibular edge is wavy.

\*\*\* did not have the 3<sup>rd</sup> instar larva and I do not know its characteristics.





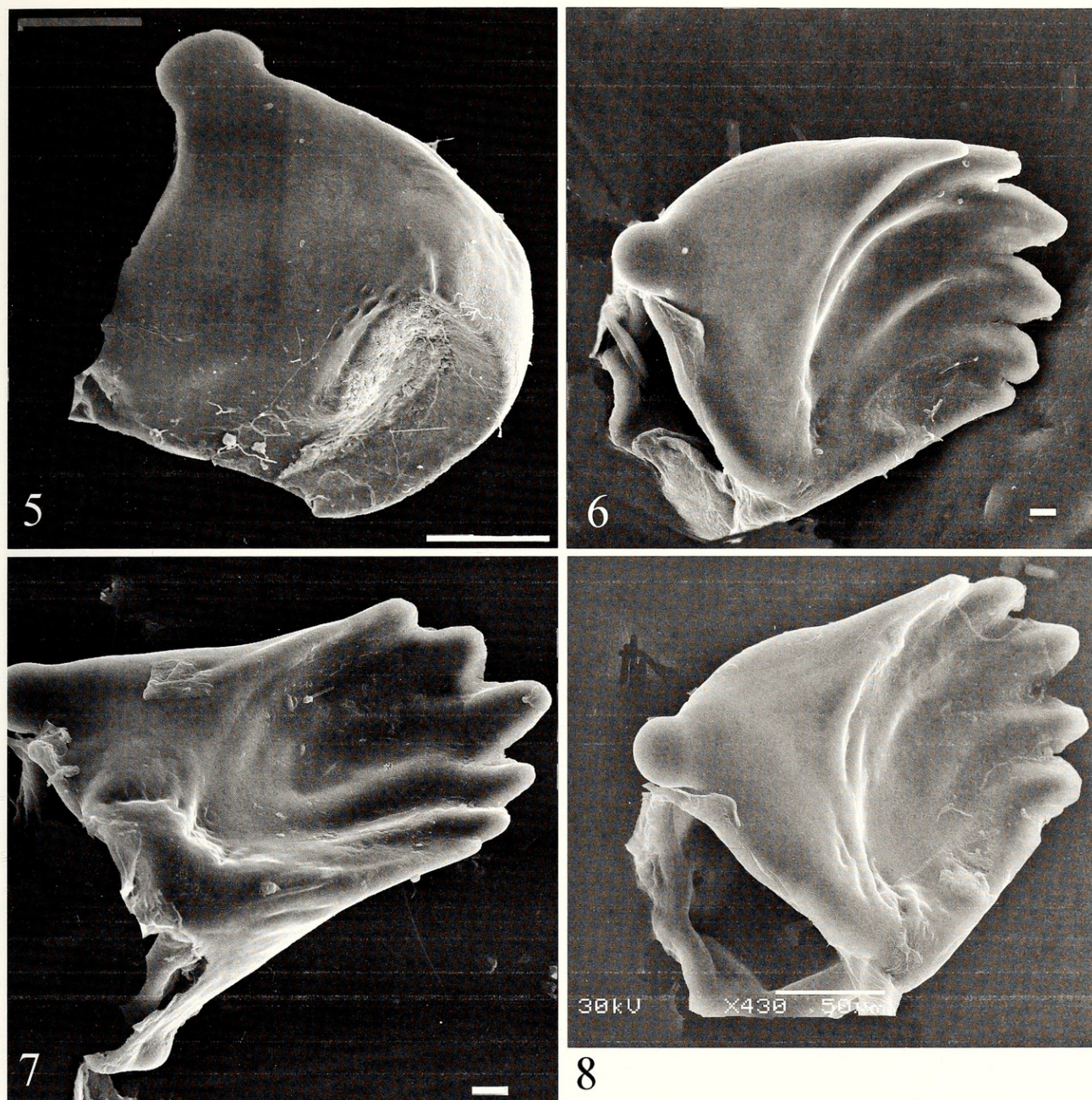
**Figs 1–4.** Oral surface of mandibles of 1<sup>st</sup> instar Notodontidae larvae. **1.** *Ptilodon hoegei* (left mandible, 600 ×). **2.** *Phalera bucephala* (left mandible, 720 ×). **3.** *Cnethodonta grisea* (right mandible, 600 ×). **4.** *Stauropus fagi* (right mandible, 480 ×).

Dockter (1993: 37, 38, Fig. 8) pointed out that in 1<sup>st</sup> instar larvae of *Heterocampa guttivitta* Walker the “third and fourth teeth have flanges on the bases of their ventrolateral edges”. My studies of 1<sup>st</sup> instar larvae show that most species in which the mandibles have acutely-angled narrow denticles, also have a large medial comb on the inner surface. These imitate “flanges” on separate denticles (Figs 9, 15, 16).

**Retinaculum.** The mandibles of Notodontidae have a retinaculum located on the oral surface. My investigations show that the retinaculum is not yet formed in the 1<sup>st</sup> instar, except in the highly specialized genera *Stauropus* and *Cnethodonta*, where it is distinct but not sclerotized (Figs 3, 4).

Dockter (1993) noted the presence of a retinaculum in the 2<sup>nd</sup> instar for two species of *Heterocampa* Doubleday from North America. The Palaearctic species I studied have a





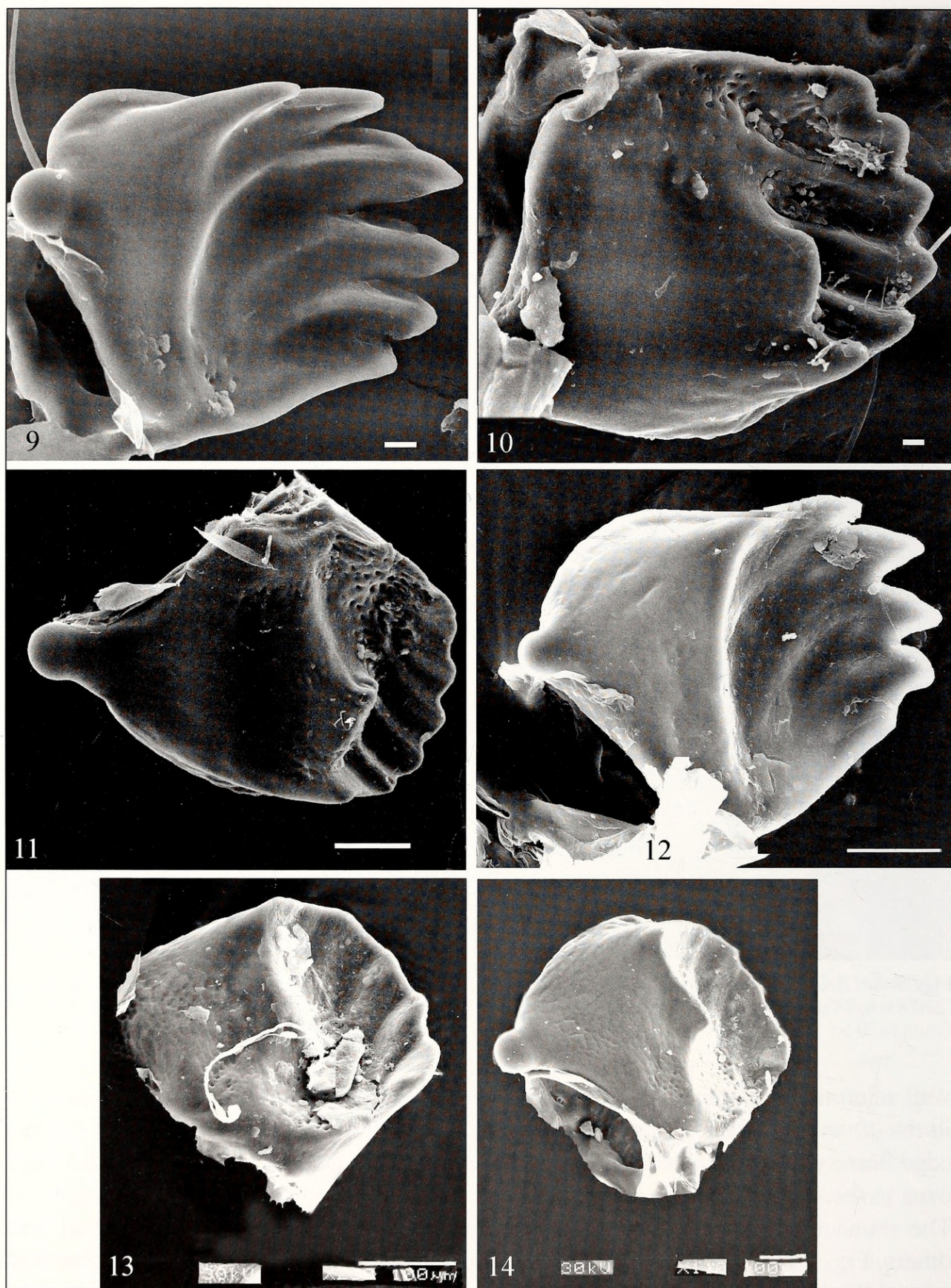
**Figs 5–8.** Oral surface of right mandible of Notodontidae larvae. **5.** 4<sup>th</sup> instar *Gonoclostera timoniorum* (220 ×). **6.** 1<sup>st</sup> instar *Clostera anachoreta* (480 ×). **7.** 1<sup>st</sup> instar *Pygaera timon* (600 ×). **8.** 2<sup>nd</sup> instar *Pygaera timon* (430 ×).

well sclerotized retinaculum in the 2<sup>nd</sup> instar which becomes more heavily sclerotized in the 4<sup>th</sup> and 5<sup>th</sup> instars, thus providing additional strength for the mandibular cutting edge. Rarely the retinaculum appears not in the 2<sup>nd</sup> but in the 3<sup>rd</sup> instar (*Dicranura*) and even in the 4<sup>th</sup> (*Pygaera*).

The retinaculum may be flattened (*Pterostona*, *Micromelalopha*, *Gonoclostera*, and others, Fig. 5), with a small projection (*Semidonta*, *Euhampsonia* and others), or with a large, high comb (*Uropyia*, *Dicranura*, *Nerice*, Figs 11, 14), which increases in the 3<sup>rd</sup> and 4<sup>th</sup> instars.

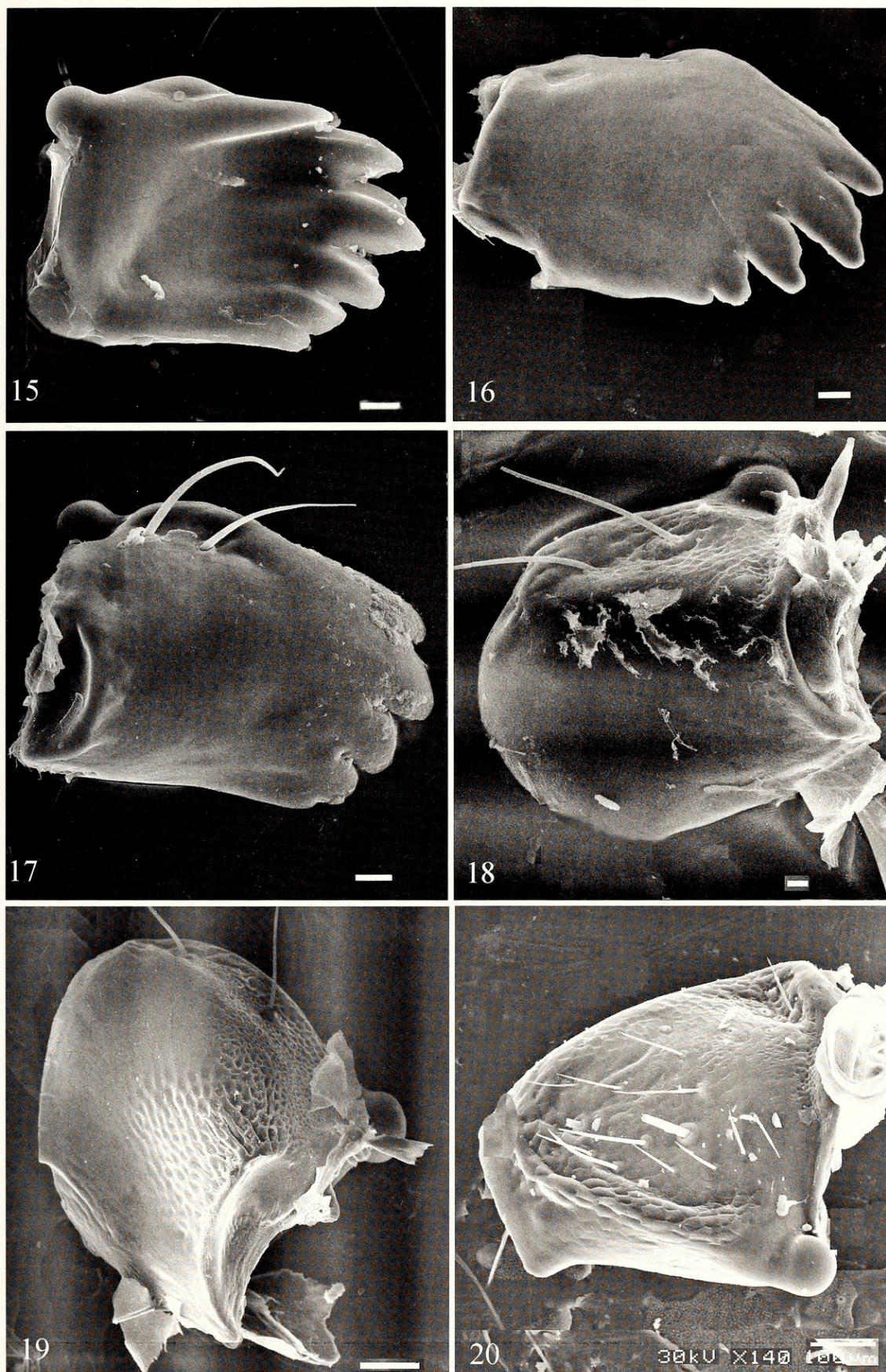
**Mandibular carina.** The presence of a mandibular carina and its disposition on the ventrolateral mandibular surface of some species of Notodontidae has been noted by Miller (1991: 124, 125, Figs 395–397). My studies show that this structure looks like a





**Figs 9–14.** Oral surface of mandibles of Notodontidae larvae. **9–11.** *Nerice davidi* (right mandible). **9.** 1<sup>st</sup> instar (660 ×). **10.** 2<sup>nd</sup> instar (440 ×). **11.** 3<sup>rd</sup> instar (160 ×). **12–14.** *Dicranura ulmi*. **12.** 2<sup>nd</sup> instar (right mandible, 450 ×). **13.** 3<sup>rd</sup> instar (left mandible, 230 ×). **14.** 4<sup>th</sup> instar (right mandible, 110 ×).





**Figs 15–20.** Surface of mandibles of Notodontidae larvae. **15.** Oral surface of right mandible of 1<sup>st</sup> instar *Clostera pigra* (660 ×). **16.** Lateral surface of left mandible of 1<sup>st</sup> instar *Furcula bifida* (600 ×). **17.** Lateral surface of left mandible of 1<sup>st</sup> instar *Notodonta torva* (780 ×). **18.** Part of mandibular carina (above side) of right mandible of 2<sup>nd</sup> instar *Spatalia dives* (440 ×). **19.** Part of mandibular carina (above side) of right mandible of 4<sup>th</sup> instar *Uropygia meticulodina*. **20.** Ventrolateral surface (area limited by mandibular carina) of left mandible of 4<sup>th</sup> instar *Dicranura ulmi* (140 ×).



comb, limited to the ventrolateral surface of the mandible (see Fig. 20). Most genera of Notodontidae have a more or less developed carina (Figs 17–20) and only some have a clearly expressed carina (*Dicranura*, *Phalera*, *Nerice*, *Clostera*, and others). This character is difficult for taxonomic interpretation.

**Mandibles with secondary setae.** Gardner (1943) and Miller (1991) noted the presence of secondary setae on the mandibles of Thaumetopoeinae. I found secondary setae on the mandibles in 4<sup>th</sup> and 5<sup>th</sup> instar larvae of *Dicranura* (Fig. 20), but nowhere else among the taxa studied.

## Discussion

The classification of the Notodontidae is in dire need of improvement. In the systems proposed by different authors an uncertainty about the number of subfamilies as well as the classification of their genera remains until now. The recent classifications of the Notodontidae (Tikhomirov 1981; Schintlmeister 1985; Miller 1991) have the best argumentations. Now I want to show how the results of my original investigations agree or disagree with the above-mentioned classifications.

The larval mandibles of the majority of the investigated genera of Notodontidae are uniform. Their mandibular margin possesses 6 acutely-angled denticles in the first instar, which then becomes smooth in the 2<sup>nd</sup> through 5<sup>th</sup> instars. Such structure is present in 21 genera, namely *Euhampsonia*, *Furcula*, *Uropyia*, *Harpyia*, *Fentonia*, *Drymonia*, *Notodonta*, *Peridea*, *Semidonta*, *Leucodonta*, *Lophocosma*, *Pheosiopsis*, *Shaka*, *Pterostoma*, *Ptilodon*, *Lophontosia*, *Hagapteryx*, *Allodonta*, *Hexafrenum*, *Epodonta*, and *Spatalia*. In this case my data are mostly coordinated with the system of Tikhomirov (1981) where these genera, except *Furcula* are included into subfamily Notodontinae. Genus *Furcula* in the classifications of Tikhomirov (1981) and Schintlmeister (1985) is placed in the derived subfamily Cerurinae. On the other hand, Miller (1991) transferred this genus to subfamily Notodontinae, in tribe Dicranurini. My data of the larval mandible structure do not contradict this opinion.

The placement of genus *Harpyia* in the Notodontinae by Tikhomirov (1981) is supported by characters of the structure of the larval mandibles whereas other peculiarities of the larva, egg, and pupa characterize this genus as highly specialized (Dolinskaya 1986, 1987 a, c; Dolinskaya & Plushch 2003), which is reflected in the classifications proposed by Schintlmeister (1985) and Miller (1991). The first author placed this genus into subfamily Stauropinae while the second included it into the Heterocampinae, Stauropini.

Genera *Pheosia* and *Phalera* as well as the above-mentioned 21 genera are characterized by mandibles with 6 acutely-angled denticles in the first instar; however, they are not narrow and acute, but broad and flattened. Tikhomirov (1981) included both genera into subfamily Notodontinae and noted that *Pheosia* is characterized by the highest specialization among the Notodontinae. The genus is characterized also by a rather specialized sculpture of the egg chorion (Dolinskaya 1987 b, c). The taxonomic position of the genus is intended to be investigated further. There are two opinions concerning the position of genus *Phalera* in the notodontid classification. Tikhomirov (1981) consid-



ers that it must be included within the Notodontinae while the other authors suggested that it belongs to the Phalerinae (Schintlmeister 1985; Miller 1991).

Genera *Stauropus* and *Cnethodonta* have flattened, broad mandibles with 4 denticles in the 1<sup>st</sup> instar. I consider this state to be apomorphic because most representatives of the outgroup (Noctuidae, Lymantriidae, Arctiidae) have the mandibular edge with 5–6 acutely-angled, narrow denticles in the 1<sup>st</sup> instar. Besides, these genera have a retinaculum in the 1<sup>st</sup> instar. In this case my conclusions are consistent with those of the other authors. Miller (1991) included these two genera into the Heterocampinae, Stauropini, while Schintlmeister (1985) and Tikhomirov (1981) placed only genus *Stauropus* into their Stauropinae. Tikhomirov (1981), based on characters of the functional morphology of the genitalia retains *Cnethodonta* in the less advanced Notodontinae, i.e. *Cnethodonta* is regarded by him as the less advanced genus relative to *Stauropus*, and this fact is also corroborated here (the denticles of the 1<sup>st</sup> instar larvae are less flattened).

In genera *Clostera*, *Gonoclostera*, *Pygaera*, *Micromelalopha*, *Gluphisia*, *Dicranura*, and *Nerice*, as opposed to the other notodontid larvae, the serrate mandibles do not disappear in the 2<sup>nd</sup> instar and there is a smooth process of their transformation to the last instar. I consider such state to be plesiomorphic because of the presence of mandibular denticles in 1–5<sup>th</sup> instars in most representatives of the outgroup. The mandibular margin becomes smooth in the 3<sup>rd</sup> instar in *Clostera*, *Gonoclostera*, *Pygaera*, *Micromelalopha*, and *Gluphisia*. In the 4<sup>th</sup> instar of *Dicranura* the mandibular edge becomes sinuous. In *Nerice* the mandibular edge looks like 6 fused distinct denticles until the 5<sup>th</sup> instar. The above-mentioned genera have common characters as well as specific peculiarities.

For example, *Clostera*, *Pygaera*, *Micromelalopha*, *Dicranura*, and *Nerice* have a well expressed carina. In *Gonoclostera* and *Gluphisia* the mandibular carina is weakly expressed. *Pygaera*, *Gluphisia*, and *Dicranura* may be united by the absence of the retinaculum in the 2<sup>nd</sup> instar, whereas in the rest of the genera this structure is present. Besides that, *Clostera*, *Pygaera*, and *Micromelalopha* have the retinaculum with only a small projection while *Dicranura* and *Nerice* have a large, high comb. In addition, *Dicranura* have secondary setae on the mandibles in the 4<sup>th</sup> and 5<sup>th</sup> instars.

Concerning genera *Clostera*, *Gonoclostera*, *Pygaera*, and *Micromelalopha* my data coincide with the classifications of the three above-mentioned authors. In the classifications of Tikhomirov (1981) and Schintlmeister (1985) these genera are included into the primitive subfamily Pygaerinae. Miller (1991) placed into this subfamily only genus *Clostera* and said that following further investigation genera *Micromelalopha*, *Pygaera*, and *Gonoclostera* perhaps will be included into Pygaerinae also. It must be noted that the mandibular denticles of *Micromelalopha* in the 2<sup>nd</sup> instar are rather broadened, flattened, and rounded in comparison with those of *Clostera*, *Gonoclostera*, and *Pygaera*. I consider this state of the denticles to represent an apomorphy for this genus.

*Gluphisia* requires additional research. The peculiarities of the mandibles and pupa (Dolinskaya 1986, 1989) show similarities with genus *Clostera*, *Gonoclostera*, *Pygaera*, and *Micromelalopha*. The data that I obtained do not match with any of the published classifications. Packard (1895) placed *Gluphisia* into the separate subfamily Gluphisiinae; Tikhomirov (1981) and Miller (1991) into subfamily Notodontinae.



Schintlmeister (1985) placed *Dicranura* into the derived Stauropinae together with *Harpyia* and *Stauropus*. The results of my studies are not concordant with this point of view. I consider that *Dicranura* has a complex of primitive attributes that are characteristic of the Pygaerinae and Thaumetopoeinae, as well as a complex of specialized features that are characteristic only to the genus. Thus, it is necessary to undertake more detailed investigations.

The position of genus *Nerice* in the Notodontidae remains unclear. Among all known classifications its status is discussed only by Packard (1895) and Tikhomirov (1981) who include it into the Notodontinae.

Summarizing the above-discussed characters of the Notodontidae it can be concluded that the morphology of the larval mandibles allows to unravel related groups within the family. The genera with more specialized morphology, as a rule, possess apomorphic states of the mandibular characters. However, the reconstruction of the Notodontidae phylogeny is not the main goal of the present paper, and a well-argued classification should be based on a phylogenetic analysis involving a complex of characters, including larval, but also characters of the eggs, pupae, and imagoes.

### Acknowledgements

I am very grateful to Z. A. Panina (Department of Electronic Microscopy, N. G. Kholodny Institute of Botany, National Academy of Sciences of Ukraine, Kiev) for her help with the SEM and to V. V. Zhuravlev (Schmalhausen Institute of Zoology, National Academy of Sciences of Ukraine, Kiev) for the help arranging the illustrations. I am obliged to Mr I. Kostyuk (Zoological Museum of the Shevchenko National University in Kiev), to Dr A. Schintlmeister (Germany), and to Dr G. L. Godfrey (Center for Biodiversity, Illinois Natural History Survey, USA) for their assistance with literature.

### References

- Dockter, D. E. 1993. Developmental changes and wear of larval mandibles in *Heterocampa guttivitta* and *H. subrotata* (Notodontidae). – Journal of the Lepidopterists' Society **47** (1): 32–48.
- Dolinskaya, I. V. 1986. Chrysalid morphology of certain Notodontid moth species (Lepidoptera, Notodontidae) of the fauna of the USSR. – Vestnik zoologii **2**: 59–66 [in Russian].
- Dolinskaya, I. V. 1987a. Morphology of the eggs of the Notodontidae (Lepidoptera) of the fauna of the USSR. Communication 1. – Vestnik zoologii **1**: 65–74 [in Russian].
- Dolinskaya, I. V. 1987b. Morphology of the eggs of the Notodontidae (Lepidoptera) of the fauna of the USSR. Communication 2. – Vestnik zoologii **2**: 50–60 [in Russian].
- Dolinskaya, I. V. 1987c. Morphology of the eggs of certain Notodontid moth species (Lepidoptera, Notodontidae). Pp. 40–42. – In: E. N. Savchenko (ed.), Fauna i biocenoticheskie svyazi nasekomykh Ukrainy. – Naukova Dumka, Kiev [in Russian].
- Dolinskaya, I. V. 1989. Morphology of the pupae of the Notodontidae (Lepidoptera) from Russian Far East. – Vestnik zoologii **5**: 60–67 [in Russian].
- Dolinskaya, I. V. & I. G. Plushch 2003. Review of the main morphological characters of the palaearctic notodontid larvae (Lepidoptera, Notodontidae). Communication 1. – Lambillionea **103**: 607–624.
- Gardner, J. C. M. 1943. Immature stages of Indian Lepidoptera. – Indian Journal of Entomology **5**: 89–102.
- Godfrey, G. L. 1984. Notes on the larva of *Cargida pyrrha* (Notodontidae). – Journal of the Lepidopterists' Society **38** (2): 88–91.
- Godfrey, G. L., J. S. Miller & D. J. Carter 1989. Two mouthpart modifications in larval Notodontidae (Lepidoptera): their taxonomic distributions and putative functions. – Journal of the New York Entomological Society **97** (4): 455–470.



- Miller, J. S. 1991. Cladistics and classification of the Notodontidae (Lepidoptera: Noctuoidea) based on larval and adult morphology. – Bulletin of the American Museum of Natural History **204**: 1–230, 541 Figs, 8 Tbls.
- Packard, A. S. 1895. Monograph of the bombycine moths of America north of Mexico including their transformations and origin of the larval markings and armature. Part 1, Notodontidae. Memoirs of the National Academy of Sciences **7**: 3–291, 49 pls.
- Schintlmeister, A. 1985. Beitrag zur Systematik und Klassifikation der europäischen Notodontidae (Lepidoptera, Notodontidae). – Deutsche entomologische Zeitschrift, N. F. **32** (1–3): 43–54.
- Schintlmeister, A. 1989. Zoogeographie der palaearktischen Notodontidae (Lepidoptera). – Neue entomologische Nachrichten **25**: 3–117.
- Tikhomirov, A. M. 1981. Taxonomic structure of the family Notodontidae and its position in the system of Lepidoptera with regard of functional morphology of genitalia of species from the Far East. – Trudy zoologicheskogo Instituta AN SSSR (Leningrad) **103**: 62–72 [in Russian].
- Weller, S. J. 1987. *Litodonta hydromeli* Harvey (Notodontidae): description of life stages. – Journal of the Lepidopterists' Society **41** (4): 187–194.





Dolinskaya, Irina V. 2008. "Taxonomic Variation in Larval Mandibular Structure in Palearctic Notodontidae (Noctuoidea)." *Nota lepidopterologica* 31, 165–177.

**View This Item Online:** <https://www.biodiversitylibrary.org/item/179934>

**Permalink:** <https://www.biodiversitylibrary.org/partpdf/147332>

**Holding Institution**

Smithsonian Libraries and Archives

**Sponsored by**

Biodiversity Heritage Library

**Copyright & Reuse**

Copyright Status: In Copyright. Digitized with the permission of the rights holder

License: <http://creativecommons.org/licenses/by-nc-sa/3.0/>

Rights: <https://www.biodiversitylibrary.org/permissions/>

This document was created from content at the **Biodiversity Heritage Library**, the world's largest open access digital library for biodiversity literature and archives. Visit BHL at <https://www.biodiversitylibrary.org>.