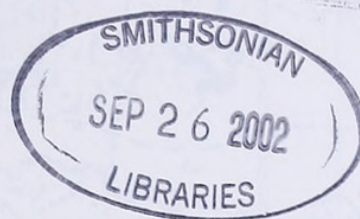


Molluscan fauna of the “Miocene” Maéjima Formation in Maéjima Island, Okayama Prefecture, southwest Japan

TAKASHI MATSUBARA

Division of Natural History, Museum of Nature and Human Activities, Hyogo, 6 Yayoigaoka, Sanda 669-1546, Japan (e-mail: matsu@nat-museum.sanda.hyogo.jp)

Received August 2, 2001; Revised manuscript accepted January 15, 2002



Abstract. Molluscan fauna of the “Miocene” Maéjima Formation is examined from taxonomical, biostratigraphical and paleozoogeographical points of view. It is composed of four gastropods and 14 bivalves including a new species. Two assemblages, the *Isognomon* and the *Megangulus-Acila* assemblage, were discriminated. The *Isognomon* assemblage is autochthonous or para-autochthonous and is composed of elements inhabited the littoral to upper sublittoral gravelly to rocky bottom in a warm sea. The *Megangulus-Acila* assemblage represents a mixed composition between muddy sand and gravelly to rocky bottom elements, and was formed in an upper sublittoral muddy bottom near a rocky shore. Occurrences of *Megangulus maximus* (Nagao), *Isognomon (Hippochaeta) hataii* Noda and Furuichi and *Chlamys (Leochlamys) namigataensis* (Ozaki) indicate the age of the Maéjima Formation as the Paleogene, not the Miocene. The molluscan fauna of the Paleogene Maéjima Formation contains both Tethyan Indo-Pacific elements and Northern Pacific elements. Taxonomy of selected molluscan taxa including a new arcid, *Arca (Arca) uedai* sp. nov., is described or discussed.

Key words: *Arca (Arca) uedai* sp. nov., First Setouchi Series, Maéjima Formation, molluscan fauna, Paleogene

Introduction

The First Setouchi (or Setouti) Series (Kasama and Huzita, 1957) is the generic name for the Miocene strata scattered in the median zone of southwestern Japan (or the Setouchi Geologic Province; Ikebe, 1957), and all of its constituent formations had been regarded as uppermost lower to lower middle Miocene mainly on the basis of the lithology, sedimentary cycle and molluscs (e.g. Huzita, 1962; Itoigawa and Shibata, 1973, 1986, 1992; Ishida, 1979). It has been known that the “Miocene” molluscan assemblages in the coastal area of the eastern Seto Inland Sea (= Setouchi-Éngan Belt; Yano *et al.*, 1995a) are different from those in the neighboring backbone area (= Bihoku Belt; Yano *et al.*, 1995a), both in the western Setouchi Geologic Province (e.g. Huzita, 1962; Itoigawa, 1969, 1971, 1983; Ueda, 1991; Yano *et al.*, 1995a). There are two current interpretations explaining this difference; some paleontologists have postulated the existences of different water masses in the two areas in the late early to early middle Miocene (e.g. Itoigawa, 1983), while others have assumed a paleogeographic barrier between the two areas in the late early to early middle Miocene except during times of maximum transgression (e.g. Ueda, 1991; Takayasu

et al., 1992; Yano *et al.*, 1995a).

On the other hand, it is becoming clear that constituent formations of the First Setouchi Series around the eastern part of the Seto Inland Sea are of Eocene to Oligocene, not Miocene age, as a result of studies during the last fifteen years (Matsuo, 1987; Ozaki and Matsuura, 1988; Suzuki *et al.*, 1995; Ozaki *et al.*, 1996; Yamamoto *et al.*, 2000b; Kurita *et al.*, 2000, 2001). Yamamoto *et al.* (2000b) found latest middle to late Eocene calcareous nannofossils and dinoflagellate cysts from the “Miocene” Iwaya Formation of the Kobe Group in Awajishima Island, and considered that the difference between the “Miocene” molluscan assemblages in the coastal area of the eastern Seto Inland Sea and those from the backbone area in the western Setouchi Geologic Province is due to chronologic difference. However, their opinion conflicts with the previous molluscan data because the Miocene species have often been listed from the First Setouchi Series in the eastern part of the Seto Inland Sea (Huzita, 1962; Saito, 1962; Saito *et al.*, 1970; Bando and Furuichi, 1978; Itoigawa, 1983; Huzita and Maeda, 1984; Mizuno *et al.*, 1990; Okumura and Sato, 1999). However, most of these studies are unaccompanied by either figures or descriptions of molluscan taxa. Thus, it is necessary to reinvestigate the molluscan

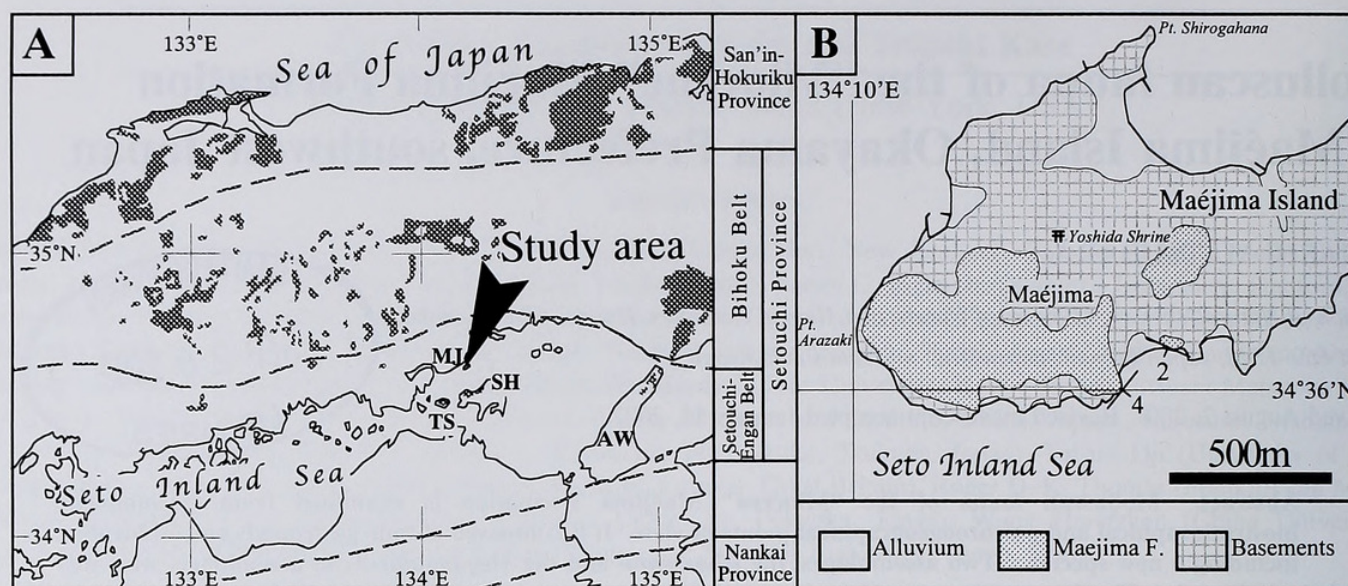


Figure 1. Location and geologic maps of the study area. **A.** Location of study area (arrow) and distribution of the "Miocene" sediments (hatched area; modified from Shibata and Itoigawa, 1980). The geologic province division follows Yano *et al.* (1995a) partly modified after Seto *et al.* (2000). AW: Awajishima Island, MJ: Maéjima Island, SH: Shodoshima Island, TS: Teshima Island. **B.** Geologic map of the western part of Maéjima Island, Okayama Prefecture.

fauna of the area, especially from the taxonomical point of view.

The Maéjima Formation is the Tertiary in the western part of Maéjima Island, Ushimado Town, Oku County, southeastern Okayama Prefecture (Figure 1A, B), and has been regarded as one of the constituents of the Miocene First Setouchi Series (e.g. Itoigawa, 1969, 1983; Itoigawa and Shibata, 1986). The distribution of the Tertiary in this island was for the first time reported by Sato (1938), and the stratigraphy was established recently by Yamamoto (2001). Although molluscan assemblages resembling those from other "Miocene" formations in the coastal areas in the eastern part of the Seto Inland Sea have been reported by Itoigawa (1969, 1971, 1983) and Yamamoto (2001) provisionally, precise constituents and faunal characteristics still remain unclear. In this paper, I taxonomically review the molluscan fauna of the "Miocene" Maéjima Formation and discuss the geologic age and its paleogeographical and paleozoogeographical implications.

Geological setting

The Maéjima Formation (Itoigawa and Shibata, 1986, as Maeshima Formation; revised by Yamamoto, 2001) is distributed in the southwestern part of Maéjima Island, unconformably overlying the pre-Tertiary plutonic rocks (Figures 1B, 2). Although Yamamoto (2001) subdivided the Maéjima Formation into the Lower Conglomerate and Sandstone and the Upper Sandstone Member, they are

treated herein as the lower and the upper part with a revision of the boundary (Figure 2A).

The lower part of the Maéjima Formation is less than 10 m in thickness and is composed mainly of granule to pebble conglomerate with numerous fragments of balanids, brachiopods, calcareous algae and molluscs. This part is well exposed on the southwestern coast of Maéjima Island, which is designated to be the type locality of the formation.

The upper part (30 m+) consists mainly of siltstone to muddy very fine-grained sandstone and is associated with calcareous medium- to coarse-grained sandstone. The upper part abuts on the basement and is conformably underlain by the lower part. Outcrop of the upper part is little exposed because it is distributed only in the hilly area with a low relief.

The age of the Maéjima Formation is not known precisely, which indicates an age of Yamamoto *et al.* (2000a) preliminarily reported a Sr isotope value of about 0.7077, which indicates an age of late Eocene or older.

Material

Molluscan samples were collected from eight localities; five from the lower part and three from the upper part (Figure 2A, B). The preservation of fossil molluscs is quite poor and shell material of most specimens examined was dissolved away except for pectinids and an ostreid. Thus, hydrophilic vinyl polysiloxane impression materials (PROVIL novo, Putty®, regular set, Heraeus Kulzer, Inc.,

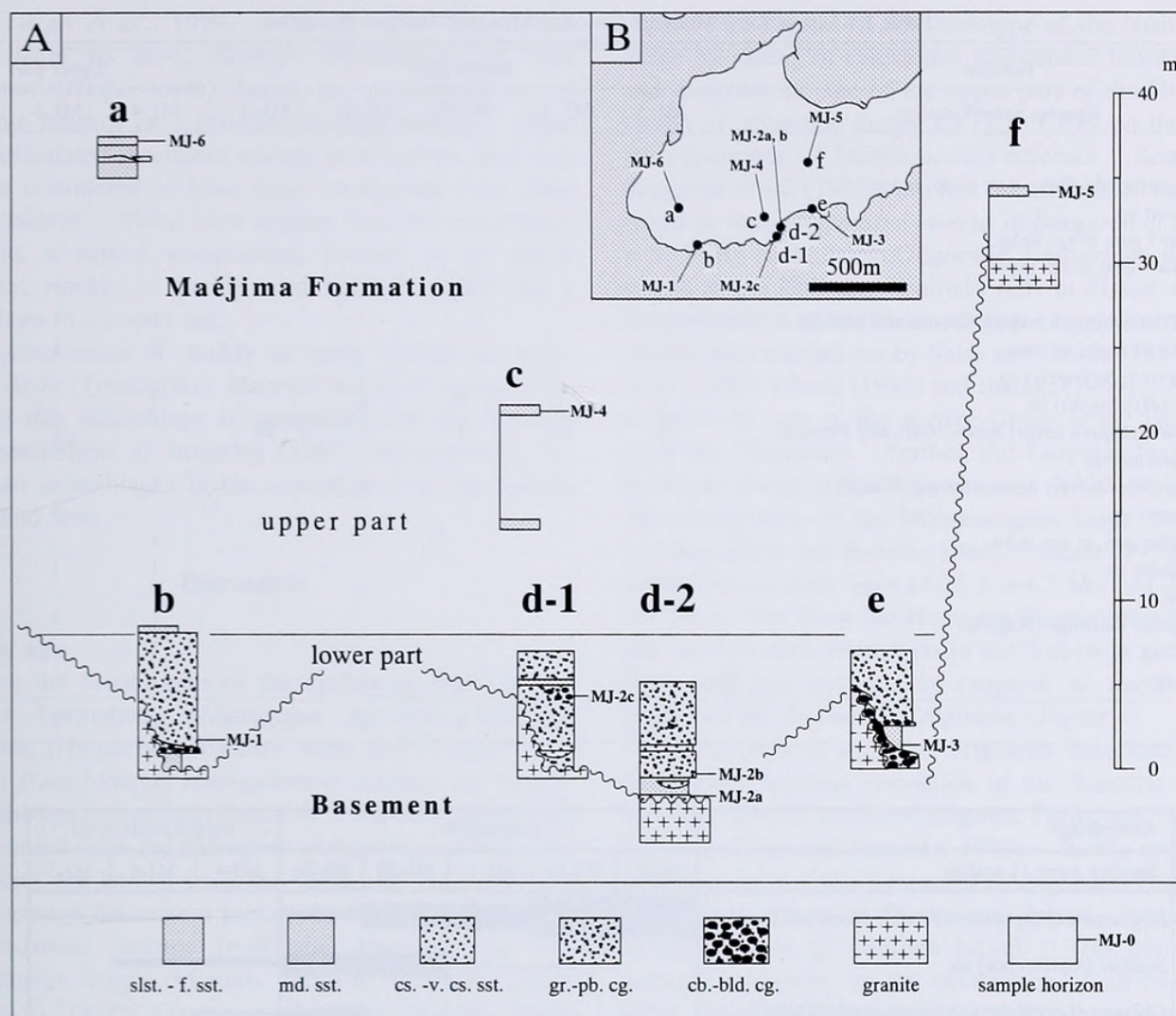


Figure 2. Columnar sections of the Maéjima Formation and locations of measured points and fossil localities. **A.** Columnar sections of the Maéjima Formation. Abbreviations. slst.: siltstone; sst.: sandstone (f.: fine-grained; m.: medium-grained; cs.: coarse-grained; v.cs.: very coarse-grained); cg.: conglomerate (gr.: granule; pb.: pebble; cb.: cobble; bld.: boulder). **B.** Map showing the points where the geologic columns (a through f) were made and fossil localities. Mapped area same as Figure 1B.

Ltd. and EXAFINE® Putty Type, GC Co., Ltd.) were used for the examination of molds.

Molluscan fauna

Four species of Gastropoda and 14 species of Bivalvia including a new species were discriminated as a result of the examination (Table 1). On the basis of the dominant and associated species, the following two assemblages are discriminated (Figure 3).

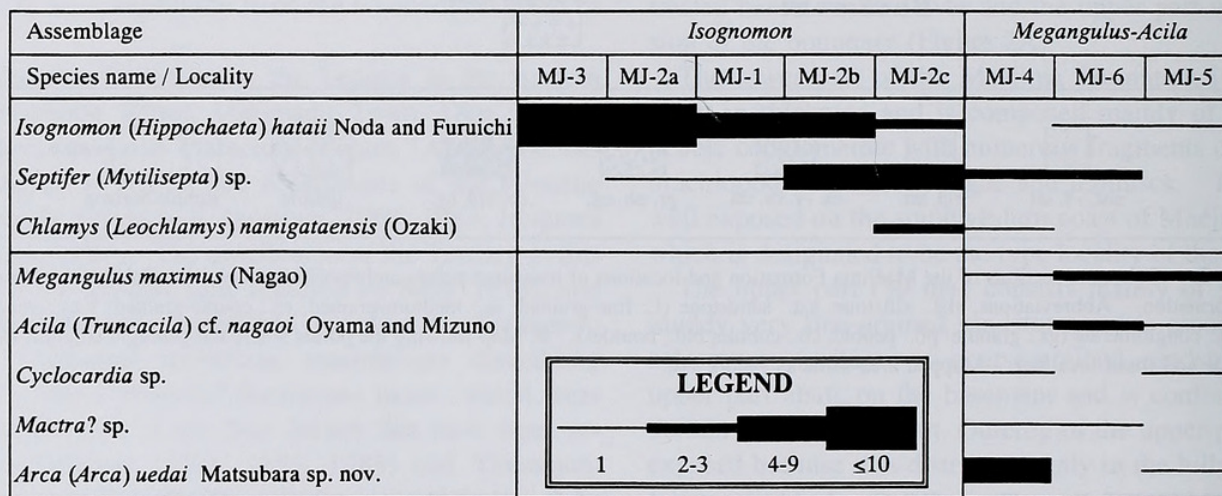
A. *Isognomon* assemblage

This assemblage is characterized by an abundant occurrence of *Isognomon* (*Hippochaeta*) *hataii* Noda and Furuichi, and is generally associated with a few specimens

of *Septifer* (*Mytilisepta*) sp. The *Isognomon* assemblage occurred from conglomerate to conglomeratic sandstone in the lower part of the Maéjima Formation (Locs. MJ-1, 2a, 2b, 2c and 3). At Loc. 3, *I. (H.) hataii* occurs abundantly in the matrix of boulder conglomerate without any associated species, and most of the specimens are articulated. At other localities, although most specimens of this species are disarticulated, they are less broken and a few articulated valves are included. Consequently, this assemblage is regarded to be autochthonous or para-autochthonous in broad sense. Taking the lithology of rocks in which the assemblage occurs and the habitat of the Recent homologues of these two species into account (Higo *et al.*, 1999), this assemblage inhabited littoral to upper sublittoral, gravelly to rocky bottom of an open sea.

Table 1. List of fossil Mollusca from the "Miocene" Maéjima Formation.

Horizon	Lower part					Upper part		
	MJ-1	MJ-2a	MJ-2b	MJ-2c	MJ-3	MJ-4	MJ-5	MJ-6
Gastropoda								
Patellogastropoda, fam., gen. et sp. indet.								1
<i>Calyptrea</i> sp.						2		1
Naticidae? gen. et sp. indet.								1
Muricidae? gen. et sp. indet.						1		
Bivalvia								
<i>Acila</i> (<i>Truncacila</i>) cf. <i>nagaoi</i> Oyama and Mizuno						1	1	2
<i>Arca</i> (<i>Arca</i>) <i>uedai</i> sp. nov.						6	1	
<i>Glycymeris</i> (<i>glycymeris</i>) sp.								1
<i>Septifer</i> (<i>Mytilisepta</i>) sp.	1	1	3	4		2		2
<i>Isognomon</i> (<i>Hippochaeta</i>) <i>hataii</i> Noda and Furuichi	6	12	4	2	26		1	1
<i>Delectopecten</i> sp.								1
<i>Chlamys</i> (<i>leochlamys</i>) <i>namigataensis</i> (Ozaki)				2		1		
<i>Crassastrea</i> sp.			1					
Luchinidae gen. et sp. indet.						1		1
<i>Cyclocardin</i> sp.						1	1	
<i>Glans</i> sp.								2
<i>Megangulus maximus</i> (Nagano)						1	3	3
<i>Mactra</i> ? sp.						1		3
<i>Tapes</i> ? sp.								2
TOTAL	7	13	8	8	26	17	7	21

**Figure 3.** Molluscan assemblages of the Maéjima Formation. Number in legend indicates that of individuals.

The *Ostrea-Balanus* assemblage of Itoigawa (1969) probably corresponds to the *Isognomon* assemblage. But only a single specimen of *Crassostrea* sp. was collected from Loc. MJ-2c among all the localities examined in the present study. Consequently, the occurrence of the *Ostrea-Balanus* Assemblage from the Maéjima Formation is not supported.

B. *Megangulus-Acila* assemblage

The *Megangulus-Acila* assemblage occurred from siltstone to medium-grained sandstone in the upper part of

the Maéjima Formation (Locs. MJ-4, 5 and 6). This assemblage is characterized by infaunal Bivalvia species, *Megangulus maximus* (Nagao) and *Acila* (*Truncacila*) cf. *nagaoi* Oyama and Mizuno. Most shells of these species are disarticulated and are arranged parallel to the bedding plane. However, a few articulated specimens of *M. maximus*, *A. (T.)* cf. *nagaoi*, *Cyclocardia* sp. and *Mactra*? sp. are recognized. This fact indicates that most shells of these species have not been transported a great distance from their original habitat. These species are regarded as shallow burrowers in an upper sublittoral, muddy to sandy

bottom (Higo *et al.*, 1999). On the other hand, *Arca* (*Arca*) *uedai* sp. nov., *Septifer* (*Mytilisepta*) sp. and *Isognomon* (*Hippochaeta*) *hataii* are considered to be epibyssate benthos on a gravelly to rocky bottom. There are no articulated specimens among these species, and thus they are considered to have been transported from their original habitat. These facts suggest that this assemblage represents a mixed composition formed in an upper sublittoral, muddy to muddy sand bottom neighboring a rocky shore in an open sea.

The occurrences of muddy to sandy bottom elements such as *Acila* (*Truncacila*), *Mactra*? and *Cyclocardia* indicate that this assemblage is compared with the *Mactra-Acila* assemblage of Itoigawa (1983) characterizing the molluscan assemblages in the coastal area of the eastern Seto Inland Sea.

Discussion

Geologic age

Among the constituents of the molluscan fauna of the Maéjima Formation, *Megangulus maximus* (Nagao), *Isognomon* (*Hippochaeta*) *hataii* Noda and Furuichi, and *Chlamys* (*Leochlamys*) *namigataensis* (Ozaki) are important for the age estimation (Figure 4). The first species has been recorded from the Paleogene of Kyushu and the other two species are known from the "Miocene" of southwest Honshu around the eastern part of the Seto Inland Sea.

M. maximus occurs from the Funazuan to the Nishisonogian Stages (Mizuno, 1962) of southwest Japan (e.g. Nagao, 1928b; Oyama *et al.*, 1960; Mizuno, 1964; Okamoto and Imamura, 1964; Okamoto, 1970; Shuto and Shiraishi, 1971; Kamada, 1980; Fuse and Kotaka, 1986; Shuto, 1991). Although the precise age of the stratotype of the Funazuan Stage, the Funazu Sandstone Member of the Iojima Formation in the Takashima Coalfield, west Kyushu, is unknown, a calcareous nannofossil biostratigraphy of the correlate Matsushima Group in the Sakito-Matsushima Coalfield (SK-MT in Figure 4) was studied by Okada (1992). Okada (1992) assigned this group to the Subzone CP 15b to CP 16a of Okada and Bukry (1980). In addition, Okada (1992) also correlated the Oniike Formation of the Sakasegawa Group in the Amakusa Coalfield (AM in Figure 4) and the Yotsuyama Formation of the Manda Group in the Miike Coalfield (MK in Figure 4), both of which are referred to the Okinoshiman Stage below the Funazuan Stage (Mizuno, 1964), to CP 14b to CP 15b. These calcareous nannofossil biostratigraphic data suggest that the lower limit of the Funazuan Stage is in CP 15b. According to Berggren *et al.* (1995), this calcareous nannofossil zone ranges from 36.0 to 34.3 Ma or the late Eocene. Okada (1992) also studied the age of the Nishisonogi Group in the Sakito-Matsushima Coalfield

(SK-MT in Figure 4), the stratotype of the Nishisonogian Stage by means of calcareous nannofossil biostratigraphy, and assigned the age of the upper part of the Nishisonogi Group to sometime during CP 17 to CP 19 on the basis of the occurrence of *Dictyococcites bisectus*. According to Berggren *et al.* (1995), the last occurrence of this species (cited as *Reticulofenestra bisecta* in Berggren *et al.*, 1995) is 23.9 Ma or the latest Oligocene. Concerning the Ashiya Group in the Chikuhō Coalfield (CH in Figure 4), one of the correlatives of the Nishisonogian Stage, biostratigraphic studies were carried out by Saito and Okada (1984), Tsuchi *et al.* (1987), Okada (1992) and Ibaraki (1994). According to them, the age of the Ashiya Group is the late early to early late Oligocene. Further, the Taoyama Formation of the Hioki Group in the Yuyawan area (YY in Figure 4), another correlative of the Nishisonogian Stage, contains *D. bisectus* (Fuse and Kotaka, 1986). Ozaki (1999) also reported fission-track ages of 25.2 ± 1.7 Ma and 23.1 ± 1.6 Ma (error: 1σ) from the Hitomaru Formation which overlies the Taoyama Formation in the Yuyawan area. Taking these data into account, the range of *M. maximus* is regarded as late Eocene to Oligocene (Figure 4).

I. (H.) hataii is a species originally described from the "Miocene" Teshima Formation of the Tonosho Group in Teshima Island, northern Kagawa Prefecture (SH-TS in Figure 4; Noda and Furuichi, 1972). Bando and Furuichi (1978) correlated this formation to the Shikai Formation of the Tonosho Group in Shodoshima Island, situated several kilometers east of Teshima Island. This correlation is strongly supported by the occurrence of an endemic bivalve, *Tapes nagahamaensis* Saito, Bando and Noda, 1970, recorded only from the Teshima and Shikai Formations. Saito *et al.* (1970), Noda and Furuichi (1972), Bando and Furuichi (1978), Itoigawa and Shibata (1992) and Okumura and Sato (1999) all regarded the Tonosho Group distributed in Shodoshima and Teshima Islands as of early middle Miocene age. However, Kurita *et al.* (2000) reported the Eocene dinoflagellate cysts from the Shikai Formation. Consequently, the age of the Teshima Formation, which contains *I. (H.) hataii*, is also considered to be Eocene (Figure 4).

C. (L.) namigataensis was originally described from the "Miocene" Namigata Formation in Ibara City, Okayama Prefecture (NM in Figure 4; Ozaki, 1956). The age of the Namigata Formation has been considered to be the lowest middle Miocene (e.g. Shibata and Itoigawa, 1980; Itoigawa, 1983; Yano *et al.*, 1995a, b). Yano *et al.* (1995b) discriminated four benthic foraminiferal assemblages characterized by such species as *Elphidiella momiyamaensis* Uchio, *Pseudononion japonicum* Asano, *Hanzawaia tagaensis* Asano and *Cibicidoides pseudongerianus* (Cushman) from the Namigata Formation. They pointed out that these assemblages are comparable with

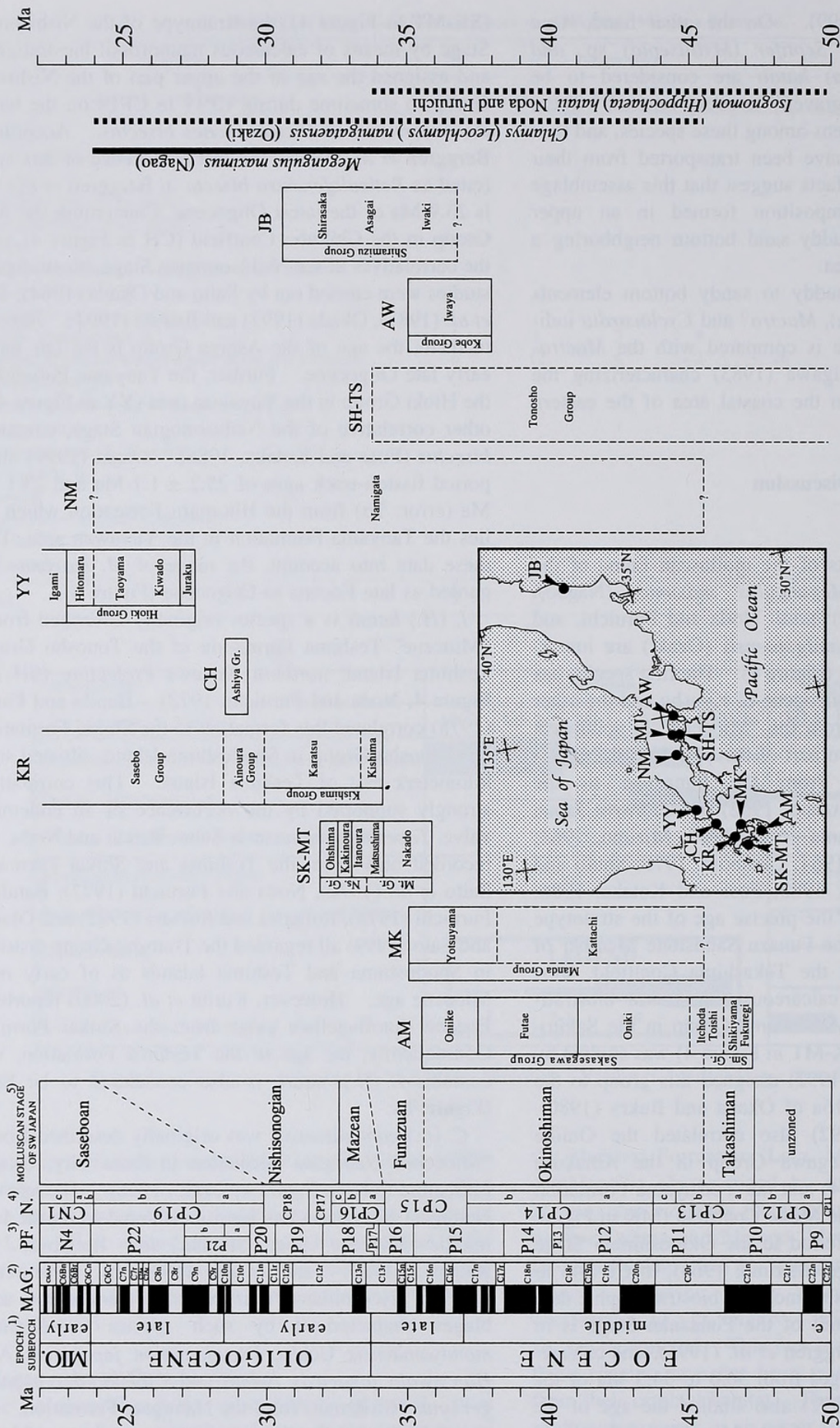


Figure 4. Correlation of the selected Paleogene strata in Japan and chronologic range of molluscan species discussed in the text. Time scale: 1) Berggren *et al.* (1995); 2) Cande and Kent (1995) and Berggren *et al.* (1995); 3) Blow (1969); 4) Okada and Bukry (1980); 5) Mizuno (1962, 1964). e.: early; MAG.: Magnetic polarity; MIO.: Miocene; N.: Calcareous nannofossils; PL.: Planktonic foraminifera. AM: Amakusa Coalfield (Okada, 1992); AW: Awajishima area (Yamamoto *et al.*, 2000b); CH: Chikuhō Coalfield (Saito and Okada, 1984; Tsuchi *et al.*, 1987; Okada, 1992; Ibaraki, 1994); JB: Joban Coalfield (Tomida, 1986; Yanagisawa and Suzuki, 1987); KR: Karatsu Coalfield (Sakai *et al.*, 1990; Miyachi and Sakai, 1991; Okada, 1992; Ibaraki, 1994); MK: Miike Coalfield (Okada, 1992); NM: Namigata area (Nishimoto and Itoigawa, 1977; SH-TS: Shidoshima-Teshima area (Kurita *et al.*, 2000); SK-MT: Sakito-Matsushima Coalfield (Okada, 1992); YY: Yuyawan area (Fuse and Kotaka, 1986; Ozaki, 1999). Mt.Gr.: Matsushima Group; Ns.Gr.: Nishisonogi Group; Sm.Gr.: Shimoshima Group.

those of the *Miogypsina kotoi-Operculina complanata* Assemblage Zone of Nomura (1992), being assigned to the latest early to early Middle Miocene. However, *E. momiyamaensis*, *H. tagaensis* and *C. pseudoungerianus* were also reported from the Iwaya Formation of the Kobe Group by Tai (1959), from which Yamamoto *et al.* (2000b) reported Eocene calcareous nannofossils and dinoflagellate cysts. In addition, the benthic foraminiferal assemblages from the Namigata Formation do not include *Ammonia tochiensis* (Uchio) which is one of the representative species in the Miocene benthic foraminiferal zone (Yano *et al.*, 1995b). Consequently, the benthic foraminiferal data do not indicate a Miocene age for the Namigata Formation.

On the other hand, Nishimoto and Itoigawa (1977) preliminarily reported *Carcharodon angustidens* (Agassiz) from the Namigata Formation in addition to the upper lower Oligocene Yamaga Formation of the Ashiya Group and the upper Oligocene Taoyama Formation of the Hioki Group. This fossil shark has very characteristic teeth with distinct anterior and posterior cusps. Yabumoto and Uyeno (1994) indicated that in Japan *C. angustidens* has been restrictedly found from the middle Eocene to the upper Oligocene of southwest Japan. Consequently, the age of the Namigata Formation is regarded to be somewhere during the middle Eocene to the late Oligocene, not the Miocene (Figure 4).

Although *C. (L.) namigataensis* was also recorded from the middle Miocene Kawazu Formation in Shimane Prefecture by Masuda (1962), his figured specimen (Masuda, 1962, pl. 21, fig. 1) is not referred to *Pecten (Chlamys) namigataensis* Ozaki, 1956 (see systematic paleontology to be discussed below). Recently, *C. (L.) namigataensis* was for the first time found from the Paleogene Iwaki Formation of the Shiramizu Group in the Joban Coalfield (JB in Figure 4), northeast Honshu, Japan. Nemoto and O'Hara (2001) figured a right valve of *Chlamys ashiaensis* (Nagao) from this formation, but their figured specimen is, in my opinion, *C. (L.) namigataensis* (see systematic paleontology). The age of the Iwaki Formation of the Shiramizu Group is considered to be the late Eocene or the early Oligocene on the basis of the occurrence of *Entelodon cf. orientalis* Dashzeveg (Tomida, 1986) and the planktonic microfossils age of the Shirasaka Formation (early Oligocene; Yanagisawa and Suzuki, 1987), the uppermost constituents of the Shiramizu Group.

Taking these facts into account, the geologic age of the Maéjima Formation is judged to be Paleogene, somewhere between the middle Eocene and late Oligocene.

Implications of the molluscan fauna of Maéjima Formation

Itoigawa (1983) grouped the "Miocene" molluscan as-

semblages from the First Setouchi Series in the coastal area of the eastern part of the Seto Inland Sea, including the Maéjima Formation, into four types, the *Cyclina-Barbatia*, the "*Ostrea*", the *Mactra-Acila* and the *Cyclocardia-Nuculana* assemblages. Constituents of these assemblages were considered to have inhabit the intertidal to uppermost sublittoral sandy mudbottom, uppermost to upper sublittoral rocky bottom, upper sublittoral sandy bottom, and upper sublittoral muddy bottom, respectively (Itoigawa, 1983). An assemblage comparable in generic composition to the *Mactra-Acila* assemblage was also recognized in the Maéjima Formation, namely, the *Megangulus-Acila* assemblage. Recent studies on planktonic microfossils (Kurita *et al.*, 2000, 2001; Yamamoto *et al.*, 2000b) indicate that some of the formations yielding these assemblages are of Eocene age, which concords with the results of the present study for age assignment.

It has been known that the four assemblages of Itoigawa (1983) have little similarity in not only specific but also generic compositions to the Miocene molluscan assemblages from the neighboring backbone area (e.g. Huzita, 1962; Itoigawa, 1969, 1971, 1983; Ueda, 1991; Yano *et al.*, 1995a). The latter assemblages are represented by the embaymental arcid-potamid [potamidid] fauna of Tsuda (1965). Yamamoto *et al.* (2000b) preliminarily considered that the difference between the assemblages from the coastal area of the Seto Inland Sea and those from the backbone area is chronological taking account of the Eocene planktonic microfossils from the Iwaya Formation of the Kobe Group, while previous researchers explained it by paleoenvironmental or paleogeographic factors in Miocene time (e.g. Itoigawa, 1983; Ueda, 1991; Takayasu *et al.*, 1992; Yano *et al.*, 1995a). The result of the present study supports the view of Yamamoto *et al.* (2000b), and both indicate that the Miocene First Seto Inland Sea (Ikebe, 1957) was not invaded in the coastal area of today's eastern part of the Seto Inland Sea, and that the "Miocene" shallow marine area in the eastern part of the Seto Inland Sea in the judgment of previous researchers (e.g. Shibata and Itoigawa, 1980; Itoigawa and Shibata, 1992; Takayasu *et al.*, 1992) was in fact of Paleogene age. Consequently, it is necessary to revise the Tertiary paleogeography of southwest Japan on the basis of the precise geochronologic data in near future.

It is notable that the molluscan fauna of the Paleogene Maéjima Formation contains both Tethyan Indo-Pacific elements and Northern Pacific elements of Honda (1991, 1994). The former are represented by such genera as *Isognomon* and *Septifer*, and the latter by, for example, *Cyclocardia* and *Megangulus* (Honda, 1994; Ogasawara, 1996). Honda (1994) revealed the northward migration of the Tethyan Indo-Pacific elements in the middle Eocene and the southward migration of the Northern Pacific ele-

ments during the late early Oligocene to early Miocene. However, the precise timing and mode of migration of the molluscan fauna have not fully been clarified because Paleogene shallow marine sediments were accepted to be almost lacking in the area between Kyushu and the Pacific coast of northeast Honshu. Although the precise geologic age of the Maéjima Formation was not determined by the molluscan evidence in the present study, further geochronological studies of the Paleogene shallow marine sediments in the coastal area of the eastern part of the Seto Inland Sea and taxonomical studies of the molluscan fauna will provide a reliable basis for elucidation of the successive changes of the Paleogene molluscan fauna in the Northwest Pacific region.

Concluding remarks

Until the middle of 1990s, Paleogene marine sediments in southwest Japan had been considered to be restricted mostly to the Southern Shimanto Belt (Taira *et al.*, 1980) in the back arc of the Japanese Islands, except for Kyushu. Honda (1991, 1994) discriminated the North Japan-Western Okhotsk, Central Japan and Taiwan-South Japan Provinces from north to south for the western Pacific Paleogene molluscan faunal provinces. The Central Japan Province, in particular, was proposed on the basis of fragmental molluscan records from the accretionary sediments deposited in the lower sublittoral zone or at greater depths. Consequently, the characteristics of the shallow marine molluscan faunas in this province have been less than clear. The result of the present study strongly supports the age estimation based on planktonic microfossils by Kurita *et al.* (2000, 2001) and Yamamoto *et al.* (2000b) that the constituent formations of the "Miocene" First Setouchi Series in the coastal area of the eastern part of the Seto Inland Sea are in fact Paleogene, not Miocene (Kurita *et al.*, 2000, 2001; Yamamoto *et al.*, 2000b).

Systematic description of selected taxa

All the illustrated specimens are housed at the Museum of Nature and Human Activities, Hyogo (MNHAH). The following institutional abbreviations are also used in this paper: IGPS: Institute of Geology and Paleontology, Tohoku University, Sendai; NSMT: National Science Museum, Tokyo; UMUT: University Museum, the University of Tokyo.

Class Bivalvia
Subclass Paleotaxodonta
Order Nuculoida
Superfamily Nuculoidea
Family Nuculidae

Genus *Acila* H. & A. Adams, 1858
Subgenus *Truncacila* Grant and Gale, 1931,
ex Schenck MS

Acila (Truncacila) sp. cf. *A. (T.) nagaoui*
Oyama and Mizuno, 1958

Figure 5.4

Compare.—

Acila nagaoui Mizuno (MS). Mizuno, 1956, pl. 2, fig. 1.
[nomen nudum]

Acila (Truncacila) nagaoui Oyama and Mizuno, 1958, p. 7–8.
pl. 1. figs. 14, 15.

Material.—MNHAH reg. no. D1-018895 (from MJ-5).

Discussion.—The specimens from the Maéjima Formation are comparable with *Acila (Truncacila) nagaoui* Oyama and Mizuno, 1958, in having a small, rather longer than high, posteriorly oblique, oval shell with a beak situated at four-fifths of the shell length from the anterior end and a weak posterior ridge. They are not sufficiently well preserved to allow a precise species assignment.

Subclass Pteriomorphia
Order Arcoida
Superfamily Arcoidea
Family Arcidae
Subfamily Arcinae
Genus *Arca* Linnaeus, 1758
Subgenus *Arca* Linnaeus, 1758

Arca (Arca) uedai sp. nov.

Figure 5.5, 5.7a-c, 5.12

Type specimens.—MNHAH reg. nos. D1-018896 (Holotype); D1-018897 through D1-018903 (Paratypes).

Type locality.—Loc. MJ-4. A small outcrop exposure on its northern side about 400m south-southeast of Yoshida Shrine, Maéjima Island, Ushimado Town, Oku County, Okayama Prefecture (34° 36' 2'' N, 134° 10' 29'' E).

Diagnosis.—Rather small-sized *Arca (Arca)* with a low umbonal area, low crescent-shaped ligamental area, narrow hinge plate and shell surface sculptured by fine, low, numerous radial ribs.

Description.—Shell rather small (less than 40 mm in shell length), transversely elongate quadrate, inequilateral, moderately inflated; hinge line straight, long; beak blunt, prosocline, situated about two-fifths anteriorly of shell length; posterior ridge distinct, shell strongly depressed behind it; posteroventral margin obliquely truncated; central part of shell weakly depressed; shell surface sculptured by about 60 fine, low radial ribs; ribs generally with a fine intercalary rib on interspace; growth lines fine, generally

Table 2. Measurements of *Arca (Arca) uedai* sp. nov.

MNHANreg.no.	Length (mm)	Height (mm)
D1-018896*	34.2	18.8
D1-018897**	24.5***	12.3***
D1-018898**	35.0+***	15.2***
D1-018899**	30.9+	15.9

*holotype. **paratype. ***deformed

weak but rather strengthen on central depressed area; ligamental area low crescentic in shape, smooth except for one or a few, rather deep, chevron-shaped ligamental grooves; adductor muscle scars moderate in size, ovate (type A of Noda, 1966), weakly impressed; pallial line shallow, weakly impressed; inner ventral margin not crenated.

Etymology.—The present new species is named in honor of the late Tetsuro Ueda of Niigata University, who contributed to the molluscan paleontology of the First Setouchi Series during the middle 1980s to early 1990s.

Discussion.—*Arca (Arca) uedai* sp. nov. closely resembles *A. (A.) miurensis* Noda, 1966, from the Pleistocene Koshiba Formation in Kanagawa Prefecture. However, the present new species possesses a narrower hinge plate and lower ligamental area.

A. (A.) sakamizuensis Hatai and Nisiyama, 1952, from the Oligocene Sakamizu Formation of the Ashiya Group in Fukuoka Prefecture, Kyushu, is similar to the present new species in having fine radial ribs. The former is discriminated from the latter by having a more produced umbonal area and a higher ligamental area.

A. (A.) washingtoniana Dickerson, 1917, from the Oligocene Gries Ranch Formation of Washington, U.S.A., is another allied species, but is distinguished from *Arca (Arca) uedai* sp. nov. by having coarser radial ribs on the younger shell and stronger teeth.

The Recent *A. (A.) boucardi* Jousseaume is easily distinguished by having a larger shell with a stronger posterior ridge, coarser, less numerous radial ribs, and a higher umbonal area.

Measurements.—Table 2.

Order Mytiloida
Superfamily Mytiloidea
Family Mytilidae
Genus *Septifer* Récluz, 1848
Subgenus *Mytilisepta* Habe, 1951

Septifer (Mytilisepta) sp. indet.

Figure 5.8, 5.9, 5.14

Material.—MNHAH reg. nos. D1-18905 through D1-18907 (from MJ-2b), D1-018908 and D1-018909 (from

MJ-2c), D1-018910 (from MJ-4), and D1-018911 (from MJ-6).

Discussion.—Several poor specimens have been obtained. The occurrence of a septum in the subumbonal region and inner ventral margin lacking fine crenations indicate this species is referred to the subgenus *Mytilisepta* Habe, 1951.

Septifer (Mytilisepta) sp. from the Maéjima Formation is similar in general shell shape to *Septifer (Septifer) nagaoi* Oyama, 1951, which was introduced as a new name for *Mytilus hirsutus* Lamarck of Yokoyama, 1927 from the Oligocene Nishisonogi Group in Nagasaki Prefecture. However, the holotype designated by Oyama (1951) (UMUT reg. no. CM24987) has a very finely crenated inner ventral margin, as Mizuno (1952) described.

The present species is easily distinguished from the Recent species, *Septifer (Mytilisepta) keenae* Nomura, 1936 distributed in southern Hokkaido and southward, in having a larger shell with finer radial ribs and weakly curved anteroventral margin.

Order Pterioidea
Superfamily Pterioidea
Family Isognomonidae
Genus *Isognomon* [Lightfoot, 1786]
Subgenus *Hippochaeta* Philippi, 1844

Isognomon (Hippochaeta) hataii
Noda and Furuichi, 1972

Figures 5.15-5.17, 6.13, 6.14

Isognomon (Isognomon) hataii Noda and Furuichi, 1972, p. 120, text-fig. 1.

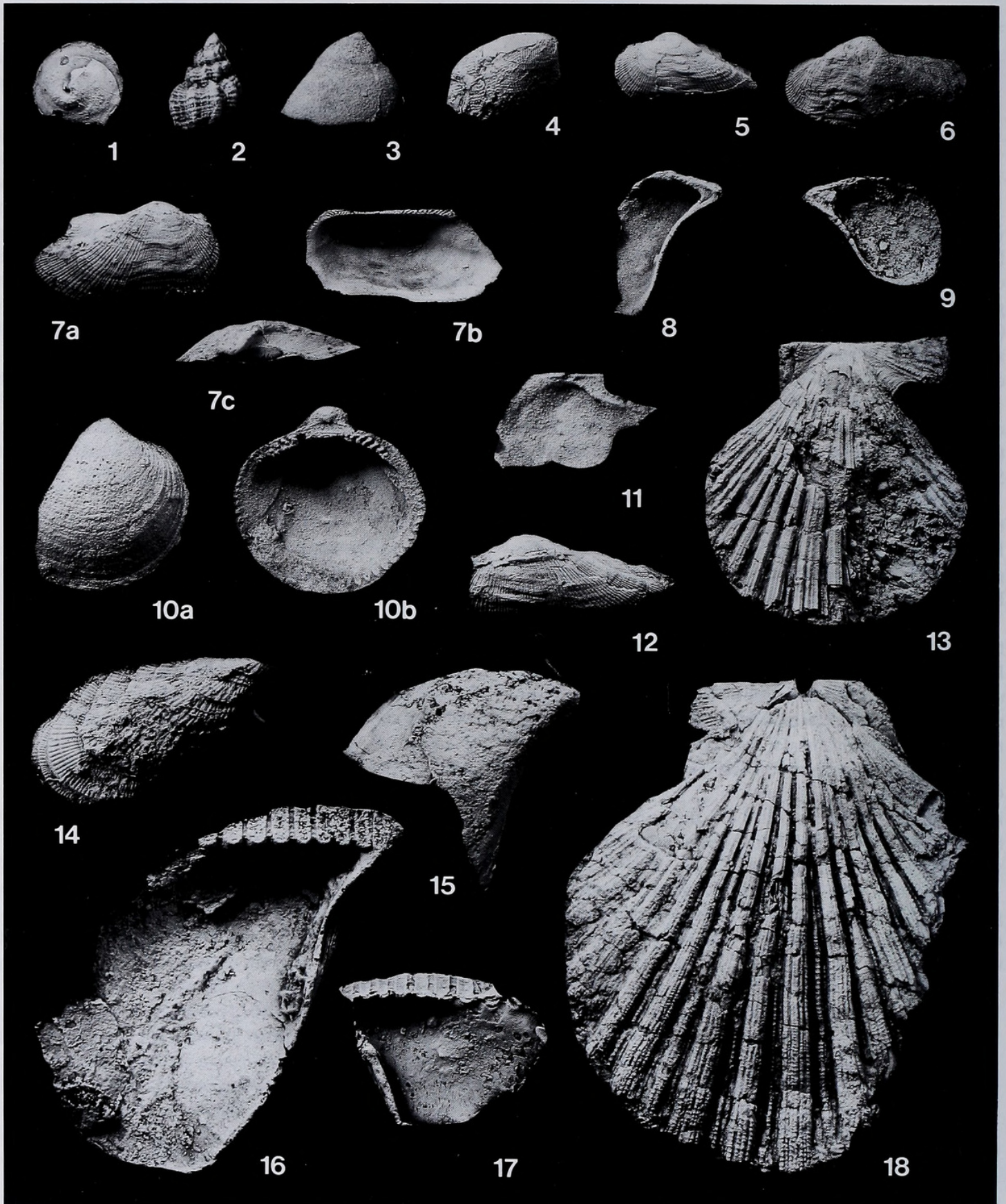
Isognomon (Isognomon) hataii Noda and Furuichi. Kaikiri and Nishimoto, 1995, p. 204.

Type specimen.—IGPS coll. cat. no. 91766 (Holotype).

Material.—MNHAH reg. nos. D1-018912 through D1-018918 (from MJ-1), D1-018919 through D1-018924 (from MJ-2a), D1-018925 through D1-018941 (from MJ-3), and D1-018942 (from MJ-6).

Emended diagnosis.—Shell of large size, mytiliform, rather thin except for ligamental area, moderately inflated; shell surface nearly smooth except for very fine, irregular, dense growth lines; byssal sinus roundly depressed; ligamental part rather thick; ligamental area rather broad, with 8 to 12 deeply concave resilifer grooves; lamellar ligament attachment area broader than groove, weakly depressed, surrounded by a fine ridge.

Description.—Shell rather large in size for the genus, mytiliform, rather thin except for ligamental area, moderately inflated; apical angle about 60°; byssal sinus rather depressed; posterodorsal margin nearly straight or weakly



curved; posteroventral margin nearly parallel to anterior one, weakly curved; centroventral margin arcuate and smoothly continuing to antero- and posteroventral margin; shell surface nearly smooth, sculptured only by very fine, irregular, dense growth lines; ligamental part thick; ligamental area rather broad, weakly annulated, with 8 to 12 resilifer grooves on fully grown individuals; resilifer grooves subequal, perpendicular to posterodorsal margin; lamellar ligament attachment areas weakly depressed, broader than resilifer grooves, surrounded by a fine ridge, with U-shaped inner margin; three byssal-pedal retractor muscle scars on subligamental part of internal shell; pallial line shallow, coarse, irregularly dotted near beak; adductor muscle scar indistinct.

Discussion.—The broad and shallow lamellar ligament attachment areas, narrow resilifer grooves and three byssal-pedal retractor muscle scars on the inner dorsal area indicate the Maéjima specimens are referred to the subgenus *Hippochaeta*. The ligamental area of the type species, *Perna maxillata* Lamarck, is well figured in Cox (1969) and Savazzi (1995).

The examined specimens from the Maéjima Formation can be referred to *Isognomon* (*Isognomon*) *hataii* Noda and Furuichi, 1972. This species was originally described from the Teshima Formation of the Tonosho Group in Teshima Island, Kagawa Prefecture, on the basis of a single incomplete left valve. Unfortunately, the shell features such as shape, thickness and surface sculpture are unknown because the holotype (IGPS coll. cat. no. 91766) is an internal mold lacking both shell material and the posterior half of the ventral area. Comparison with the holotype shows that apical angle and ligamental features are identical. Consequently, *I. (I.) hataii* is transferred here to the subgenus *Hippochaeta*, and the holotype is a fragmental juvenile specimen having less diagnostic characters.

Earlier Matsubara (2001) preliminarily identified *Isognomon* from the Maéjima Formation as *Pedalion murayamai* Yokoyama, 1932, originally described from the "Bed III" (= ? middle Eocene Krasnopolievskaya Forma-

tion, after Kafanov and Amano, 1997) in the Dorogawa-Hishitori Region, south Sakhalin. However, it becomes clear that the Maéjima specimens have deeper resilifer grooves, less depressed lamellar ligament attachment areas, coarser pallial line, and a much more indistinct adductor muscle scar than *P. murayamai*. In addition, the byssal area of *P. murayamai* is rather distinctly bent, while that of the Maéjima specimens is gently curved. Consequently, the Maéjima specimens are not referred to this species. It may be noted that the holotype of *P. murayamai* (UMUT reg. no. CM27020) is missing.

The present species is also similar in shell shape to *Pedalion tomiyasui* Nagao, 1928a, from the middle Eocene Iojima Formation of the Okinoshima Group of Kyushu. However, it is easily distinguished from the latter species by having a larger shell with narrower resilifer grooves and weakly compressed lamellar ligament attachment areas.

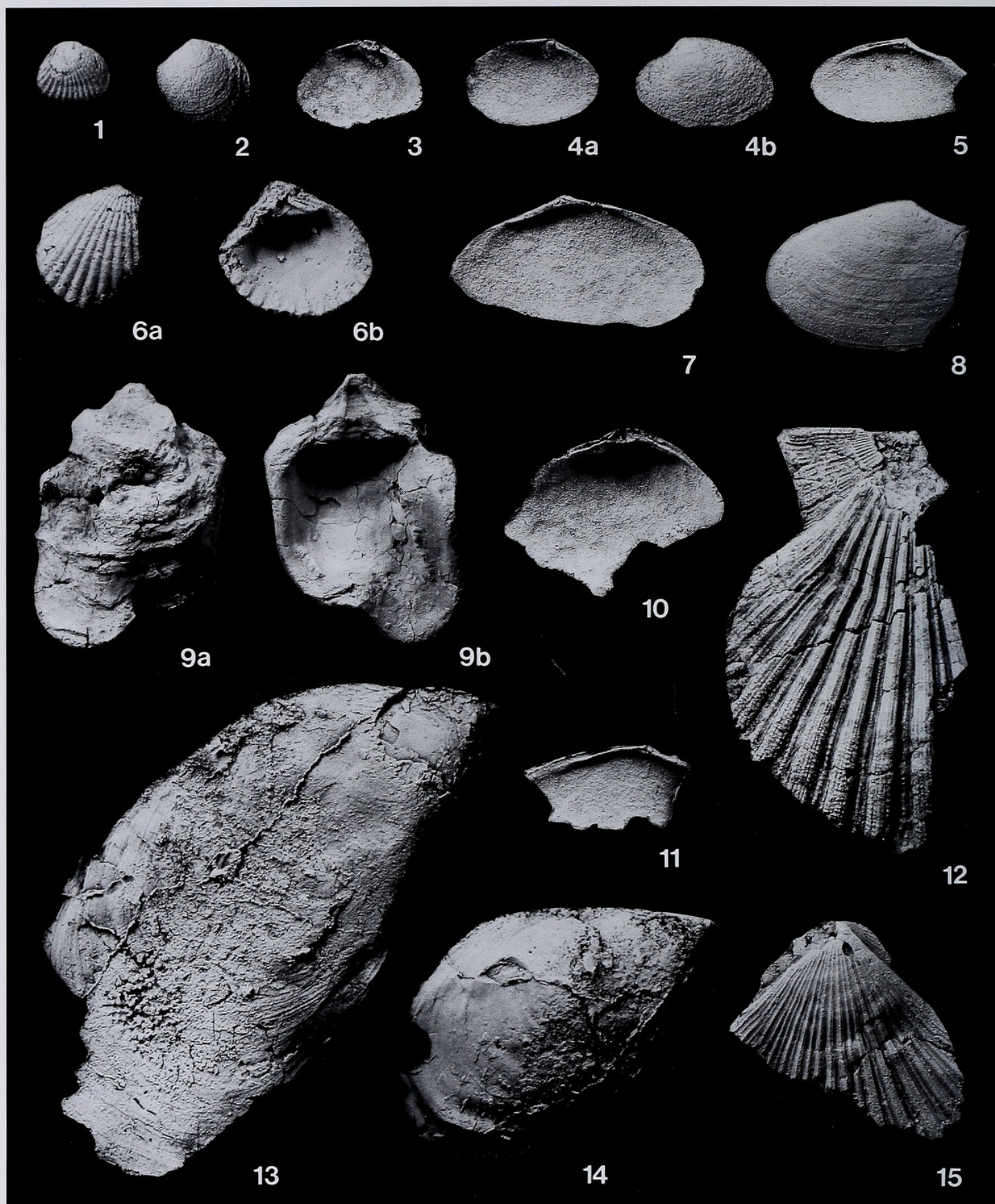
Pedalion clarki Effinger, 1938, originally described from the Oligocene Gries Ranch Formation of Washington, U.S.A., is another allied species, but differs in having more numerous resilifer grooves.

Pedalion tugaruense Nomura, 1935a, originally described from the lower middle Miocene Tanosawa Formation in Aomori Prefecture, northeast Japan, is easily distinguished from *I. (H.) hataii* by its thicker, much more longitudinally elongate shell with higher ligamental area and much blunter umbonal angle.

Distribution.—Teshima Formation of the Tonosho Group in Kagawa Prefecture, Eocene; Maéjima Formation in Okayama Prefecture, Eocene or Oligocene.

Order Ostreoida
Superfamily Pectinoidea
Family Pectinidae
Subfamily Chlamydinae
Tribe Chlamidini
Genus *Chlamys* [Röding, 1798]
Subgenus *Leochlamys* MacNeil, 1967

← **Figure 5.** Mollusca from the Maéjima Formation (1). All specimens in natural size, unless otherwise stated. All specimens whiten by magnesium oxide. 1. *Calyptrea* sp. Dorsal view of internal mold, MNHAH reg. no. D1-018890, $\times 1.5$. 2. Muricidae? gen. and sp. indet. Dorsal view, MNHAH reg. no. D1-018893, silicon rubber cast, $\times 1.5$. 3. Naticidae? gen. and sp. indet. Dorsal view, rather compressed, MNHAH reg. no. D1-018891, silicon rubber cast, $\times 1.5$. 4. *Acila* (*Truncacila*) cf. *nagaoi* Oyama and Mizuno. Left valve, MNHAH reg. no. D1-018895, silicon rubber cast. 5, 6, 7a-c, 12. *Arca* (*Arca*) *uedai* sp. nov. 5. Left valve, MNHAH reg. no. D1-018897 (paratype). 6. Left valve, MNHAH reg. no. D1-018899, $\times 1.5$. 7a-c. Right valve, MNHAH reg. no. D1-018896 (holotype), silicon rubber cast. 7a. External view. 7b. Internal view. 7c. Umbonal view. 12. Left valve MNHAH reg. no. D1-018898 (paratype), compressed umbonal-ventrally. All specimens silicon rubber casts. 8, 9, 14. *Septifer* (*Mytilisepta*) sp. 8. Internal view of left valve, MNHAH reg. no. D1-018911. 9. Internal view of right valve, MNHAH reg. no. D1-018905. 14. Right valve, MNHAH reg. no. D1-018908. All specimens silicon rubber casts. 10a-b. *Glycymeris* (*Glycymeris*) sp. Left valve, MNHAH reg. no. D1-018904, silicon rubber cast. 10a. External view. 10b. Internal view showing especially strong teeth and ligamental area with chevron sculpture. 11. *Delectopecten* sp. Internal view of left valve, MNHAH reg. no. D1-018943, silicon rubber cast, $\times 2$. 13, 18. *Chlamys* (*Leochlamys*) *namigataensis* (Ozaki). 13. Right valve, MNHAH reg. no. D1-018945. 18. Left valve, MNHAH reg. no. D1-018944. 15, 16, 17. *Isognomon* (*Hippochaeta*) *hataii* Noda and Furuichi. 15. Right valve lacking ventral part. MNHAH reg. no. D1-018929. 16. Internal view of left valve. MNHAH reg. no. D1-018926. 17. Internal view of right valve, showing ligamental area. MNHAH reg. no. D1-018916. All specimens silicon rubber casts.



Leochlamys MacNeil, 1967, p. 9–10.

Azumapecten Habe, 1977, p. 82.

Type species.—*Chlamys* (*Leochlamys*) *tugidakensis* MacNeil, 1967, by original designation. Unnamed "Pliocene" in Tugidak Island, Alaska, U.S.A.

Discussion.—Habe (1977) proposed the subgenus *Azumapecten* on the basis of the following description: "Shell of small to moderate size; right valve rather inflated, with irregular, spiny radial ribs; left valve rather compressed; anterior and posterior auricles intercalating a beak between them, rather large; posterior auricle rather oblique; byssal notch on anterior part of right valve" (translated from Japanese by the present writer). *Pecten* (*Chlamys*) *farreri* Jones and Preston, 1904, living in the Northwest Pacific was designated as the type species.

The original description of *Azumapecten* involves several obscurities in the diagnosis and is not associated with any comparison to allied genera or subgenera. However, many malacologists have treated *Azumapecten* as a valid genus or subgenus (e.g. Habe, 1981; Waller, 1993; Hayami and Matsumoto, 1995; Wang, 1996; Higo *et al.*, 1999; Hayami, 2000).

On the other hand, MacNeil (1967) proposed the subgenus *Leochlamys* which was typified by *Chlamys* (*Leochlamys*) *tugidakensis* MacNeil, 1967. MacNeil (1967) and Sinelnikova (1975) also referred "*Chlamys nipponensis* Kuroda" (= *P. (C.) farreri*) to the subgenus *Leochlamys*. Indeed, the large anterior auricle, deep byssal notch, relatively strong ctenolium, irregular spiny radial ribs on shell surface, shagreen microsculpture at least on interspaces of ribs, and absence of distinct crenulations on the inner ventral margin are common to both subgenera. Consequently, *Azumapecten* Habe, 1977, is a junior synonym of *Leochlamys* MacNeil, 1967.

***Chlamys* (*Leochlamys*) *namigataensis* (Ozaki, 1956)**

Figures 5.13, 5.18, 6.12, 6.15

Pecten (*Chlamys*) *namigataensis* Ozaki, 1956, p. 7–8, pl. 2, fig. 4.

Chlamys (*Mimachlamys*) *namigataensis* (Ozaki). Kaikiri and

Nishimoto, 1995, p. 204.

Chlamys ashiyaensis (Nagao). Nemoto and O'Hara, 2001, pl. 2, fig. 2. [not of Nagao, 1928b]

not *Chlamys* (*Mimachlamys*) *namigataensis* (Ozaki). Masuda, 1962, p. 188, pl. 21, fig. 1. [*Chlamys* sp.]

Type specimens.—NSMT reg. no. P1-4379 (Holotype and paratypes). Although Ozaki (1956) noted a specimen registered under this number as the holotype, two unfigured specimens are also registered under the same number. They are paratypes.

Material.—MNHAH reg. nos. D1-018944 through D1-018951 (from MJ-2c), and D1-018952 (from MJ-4).

Emended diagnosis.—Moderate-sized *Chlamys* (*Leochlamys*) with 15 to 19 highly elevated radial ribs; fine radial threads appearing above ribs on ventral half of disc; left valve with an intercalary rib; radial sculptures densely imbricated; anterior auricle large, with a deep byssal notch and strong byssal fasciole on right valve; shell surface sculptured by a shagreen microsculpture.

Description.—Shell moderate in size, slightly higher than long, suborbicular, rather thin; apical angle between 85° and 95°; both valves with a shagreen microsculpture; lacking internal rib carinae.

Right valve weakly inflated; radial ribs 18 to 19, rather irregular, highly elevated, with three radial striations making ridges; ribs on both dorsal parts finer than those on center, finely imbricated; interspace of ribs rather deep, with or without an intercalary rib; anterior auricle large, sculptured by 6 to 7 fine radial ribs; byssal notch deep; ctenolium several in number, strong; byssal fasciole broad, strongly annulated; posterior auricle about half the length of the anterior one, with 7 to 8 radial ribs, weakly oblique anteriorly; resilifer pit moderate in size, with a weak resilifer tooth on both dorsal flanks; anterior dorsal tooth weak, long.

Left valve also weakly inflated; radial ribs 15 to 18, highly elevated, rather regular, with three sharp primary striations; an intercalary rib on each interspace; postero-dorsal part sculptured by fine, imbricated, radial striations; secondary radial striations appearing at about 40 mm from

← **Figure 6.** Mollusca from the Maéjima Formation (2). All specimens natural size, unless otherwise stated. All specimens whitened by magnesium oxide. **1, 6a–b.** *Cyclocardia* sp. 1. Left valve, MNHAH reg. no. D1-018956, $\times 2$. 6a–b. Right valve. MNHAH reg. no. D1-018955. 6a. External view lacking umbonal and antero-ventral parts. 6b. Internal view, especially showing transported cardinal teeth, both of $\times 1.5$. Both specimens silicon rubber casts. **2.** *Lucinidae* gen. and sp. indet. Left valve, MNHAH reg. no. D1-018954, silicon rubber cast, $\times 2$. **3, 10.** *Mactra*? sp. 3. Internal view of left valve, MNHAH reg. no. D1-018969, 10. Internal view of right valve, MNHAH reg. no. D1-018968. Both specimens silicon rubber casts, $\times 2$. **4a–b.** *Tapes*? sp. MNHAH reg. no. D1-018971, $\times 2$. 4a. Internal view. 4b. External view. Silicon rubber cast. **5, 7, 8, 11.** *Megangulus maximus* (Nagao). 5. Internal view of right valve, MNHAH reg. no. D1-018965, $\times 2$. 7. Internal view of left valve, MNHAH reg. no. D1-018964, $\times 1.5$. 8. Left valve lacking posterior part of shell, MNHAH reg. no. D1-018961, $\times 1.5$. 11. Internal view of right valve lacking ventral part, MNHAH reg. no. D1-018962, $\times 2$. All specimens silicon rubber casts. **9a–b.** *Crassostrea* sp. Left valve. MNHAH reg. no. D1-018953. 14a. External view. 14b. Internal view. **12, 15.** *Chlamys* (*Leochlamys*) *namigataensis* (Ozaki). 12. Left valve lacking posterior half of shell. MNHAH reg. no. D1-018946. 15. Left valve lacking ventral part and anterior auricle. MNHAH reg. no. D1-018947. **13, 14.** *Isognomon* (*Hippochaeta*) *hataii* Noda and Furuichi. 13. Right valve, slightly compressed. MNHAH reg. no. D1-018928. 14. Right valve. MNHAH reg. no. D1-018925. Both specimens silicon rubber casts.

beak; striations on radial ribs and internal ribs tending to become imbricated ventralward with growth; anterior auricle sculptured by 10 to 14 fine, imbricated radial ribs; posterior auricle as in right valve.

Discussion.—Masuda (1962) considered the present species to be a member of the subgenus *Mimachlamys* Iredale, 1929, as a result of examination of a single right valve collected from the middle Miocene Kawazu Formation in Shimane Prefecture. However, his specimen has lower radial ribs, a shallower byssal notch and a broader apical angle, and is not referred to the present species.

The specimens from the Maéjima Formation have a large anterior auricle, deep byssal notch with strong ctenolium, and distinct shagreen microsculpture. The shagreen microsculpture is one of the diagnostic features of the tribe Chlamidini (Waller, 1993). Thus, the present species is referred to the subgenus *Leochlamys* MacNeil, 1967. The diagnosis of the present species is emended as above, adding the right valve features.

Recently, Nemoto and O'Hara (2001) figured a right valve specimen identified as *Chlamys ashiyaensis* (Nagao, 1928b) from the upper Eocene or lower Oligocene Iwaki Formation of the Shiramizu Group in the Joban Coalfield, northeast Honshu, Japan. Their figured specimen (Nemoto and O'Hara, 2001, pl. 2, fig. 2) is, however, unmistakably referred to the present species. *Pecten* (*Chlamys*) *ashiyaensis* Nagao, 1928b is distinguished from *Chlamys* (*Leochlamys*) *namigataensis* (Ozaki) by having a more compressed shell with more numerous, lower, more irregular radial ribs lacking dense imbrications.

Distribution.—Namigata Formation in Okayama Prefecture, Paleogene; Iwaki Formation of the Shiramizu Group in Fukushima Prefecture, late Eocene or early Oligocene; Maéjima Formation in Okayama Prefecture, Eocene or Oligocene.

Subclass Heterodonta
Order Veneroida
Superfamily Carditoidea
Family Carditidae
Subfamily Venericardiinae
Genus *Cyclocardia* Conrad, 1867

Cyclocardia sp. indet.

Figure 6.1, 6.6a–b

Material.—MNHAH reg. nos. D1-018955 (from MJ-4), D1-018956 and D1-018957 (from MJ-5).

Description.—Shell small, ovate, longer than high, inequilateral, oblique anteriorly, weakly inflated; radial ribs 19 to 23, rather low, round-topped, less curved; radial ribs on anterior two-thirds of shell subequal to their interspaces and broader than them on posterior part; pallial line dis-

tinct; anterior adductor muscle scar ovate, distinct; posterior adductor muscle scar oblong, weakly impressed; inner ventral margin crenated.

Discussion.—A single articulated specimen and two right valves have been obtained. It is interesting that one specimen has a transposed hinge (Figure 6.6b).

Cyclocardia sp. from the Maéjima Formation closely resembles *Cyclocardia takedai* (Honda, 1980) (new name for *Venericardia elliptica* Takeda, 1953), from the middle to upper Eocene Poronai Formation of Hokkaido. However, the former species has round-topped radial ribs while those of the latter species are flat-topped.

Cyclocardia tokunagai (Yokoyama, 1924) from the lower Oligocene Asagai Formation in Fukushima Prefecture is another allied species. However, this species is distinguished from *Cyclocardia* sp. from the Maéjima Formation by having a more triangular, more inequilateral shell with longer posterodorsal margin, less curved ventral margin and more numerous radial ribs. The present species differs from *Cyclocardia siogamensis* (Nomura, 1935b), recorded from the lower-middle Miocene of Japan and Korea, in having a less inflated shell with lower and broader radial ribs.

Superfamily Tellinoidea
Family Tellinidae
Subfamily Tellininae
Genus *Megangulus* Afshar, 1969

Megangulus maximus (Nagao, 1928) comb. nov.

Figure 6.5, 6.7, 6.8, 6.11

Tellina maxima Nagao, 1928b, p. 80, pl. 4, figs. 8–10.

Angulus (*Tellinides*) *maximus* (Nagao). Oyama *et al.*, 1960, p. 200–201, pl. 61, fig. 6; Kamada, 1980, p. 333, pl. Pg-18, fig. 7; p. 334, pl. Pg-19, figs. 15, 16; p. 335, pl. N-93, fig. 4; Fuse and Kotaka, 1986, pl. 18, figs. 20, 21.

? *Angulus* (*Tellinides*) *maxima* (Nagao). Matsumoto, 1964, p. 106, pl. 1, fig. 14.

Type specimens.—IGPS coll. cat. nos. 36412 (Holotype) and 36452 (Paratypes).

Material.—MNHAH reg. nos. D1-018960 (from MJ-4), D1-018961 through D1-018963 (from MJ-5), and D1-018964 through D1-018965 (from MJ-6).

Description.—Shell rather small, transversely elongate subelliptical, thin, slightly inequilateral, compressed; anterodorsal margin weakly curved; anterior dorsoventral margin rounded; posterodorsal margin nearly straight, narrowly depressed along ligament; posterior end oblique, narrow, subtruncated; beak low, pointed, weakly opisthocline, situated slightly posterior to middle of shell; posterior ridge weak; shell surface nearly smooth, sculptured by faint, very

fine, commarginal growth lines which are periodically strengthened; growth lines also rather strengthened on ventral part; hinge plate narrow; both valves with two small cardinal teeth and a weak, thin, long lateral tooth; posterior tooth of right valve and anterior tooth of left valve weakly bifid; nymph low; adductor muscle scars and pallial line indistinct.

Discussion.—Oyama *et al.* (1960) transferred the generic position of *Tellina maxima* Nagao, 1928b to *Angulus* (*Tellinides*) without discussion. Indeed, a thin, compressed shell with small cardinal teeth and weak posterior ridge of the present species could well be identical with those of the type species of *Tellinides*, *Tellina timorensis* Lamarck. However, the anterolateral tooth of the present species is much longer and less oblique than that of the latter. *Tellina nitidula* Dunker (= *Fabulina hokkaidoensis* Habe, 1961), the type species of *Nitidotellina* Scarlato, 1961, also resembles *T. maxima* in having a thin, compressed shell, but the anterior end of the anterolateral tooth on the right valve is angularly pointed ventralward (see Habe, 1977, pl. 41, fig. 5). The most appropriate genus for *T. maxima* is *Megangulus* Afshar, 1969. Although the members of this genus generally have a larger and thicker shell with surface sculptured by commarginal grooves, I assign *Tellina maxima* Nagao, 1928b to it on the basis of the cardinal properties (see Matsukuma *et al.*, 1988 for precise internal shell features of the Recent species).

Megangulus maximus (Nagao, 1928b) is closely similar to *Peronidia ochii* Kamada, 1962, originally described from the upper Eocene or lower Oligocene Iwaki and Asagai formations in Joban Coalfield, Fukushima Prefecture, northeast Japan. However, the former species presents a shorter shell with a more rounded posteroventral margin than the latter one.

Angulus okumurai Taguchi, 1992, from the lower Miocene Yoshino Formation in Okayama Prefecture, also resembles the present species. However, the former species is distinguished from it in having a larger, more equilateral shell with orthogyrus beak and more rounded posterior margin. The precise generic position of *A. okumurai* is also dubious because the cardinal properties have not been sufficiently examined.

Tellina (*Peronidea*) *lutea t-matsumotoi* Otuka, 1940, originally described from the Miocene "Wakkauanbetu Formation" of northern Hokkaido is distinguished from the present species in having a larger shell with a beak situated more anteriorly, and longer, more produced posterior dorsoventral margin.

Tellina vestalioides Yokoyama, 1920 is easily distinguished from the present species by having a more inflated shell with a stronger posterior ridge, weakly concave posteroventral margin behind a posterior ridge, more distinctly truncated posteroventral margin, and stronger cardi-

nal teeth.

Although Matsumoto (1964) reported *Angulus* (*Tellinides*) *maximus* (Nagao) from the lower Miocene Ôga Formation in Shizuoka Prefecture, his figured specimen has a more inflated shell with a beak situated slightly anterior to the middle of the shell, and is not referred to the present species. The specimen from the Ôga Formation of Matsumoto (1964) is probably conspecific with *Hiatula minoensis* (Yokoyama) sensu Shibata and Kato (1988).

Distribution.—Funazu Sandstone Member of the Iojima Formation of the Okinoshima Group in Nagasaki Prefecture, late Eocene; Kishima Formation in Saga Prefecture, latest late Eocene to earliest early Oligocene; Yamaga Formation of the Ashiya Group in Fukuoka Prefecture, latest early to early late Oligocene; Kiwado and Taoyama Formations of the Hioki Group in Yamaguchi Prefecture, late Oligocene; Maéjima Formation in Okayama Prefecture, Eocene or Oligocene.

Superfamily Mactroidea

Family Mactridae

Subfamily Mactrinae

Genus *Mactra* Linnaeus, 1767

Mactra? sp. indet.

Figure 6.3, 6.10

Material.—MNHAH reg. nos. D1-018967 (from MJ-4), and D1-018968 through D1-018970 (from MJ-6).

Description.—Shell rather small, roundly subtrigonal, slightly longer than high, moderately inflated; hinge plate narrow; cardinal and lateral teeth rather weak; anterior and posterior lateral teeth thin; resilifer small, shallowly depressed.

Discussion.—On the basis of cardinal properties, this species is unmistakably referred to the family Mactridae. Unfortunately, the presence or absence of a lamellar plate between resilifer and nymph, and the mode of pallial sinus were not examined in the present material due to poor preservation. Thus, the generic assignment is provisional.

"*Mactra* sp." was regarded as one of the characteristic elements of the *Mactra-Acila* assemblage from the "Miocene" around the eastern part of the Seto Inland Sea (Itoigawa, 1983).

Acknowledgments

I would like to express my appreciation to Y. Yamamoto (Okayama University) for his valuable suggestions on the fossil localities and stratigraphy of the Maéjima Formation. Acknowledgments are also due to T. Kase (National Science Museum, Tokyo), J. Nemoto (Tohoku University), T. Sasaki (University Museum, University of Tokyo) and

H. Kato (Natural History Museum and Institute, Chiba) for their kind assistance in examining specimens. I am indebted to H. Saegusa (Museum of Nature and Human Activities, Hyogo Himeji Institute of Technology) and Y. Suzuki (National Science Museum, Tokyo) for their cooperation in collecting references. I am grateful to G. J. Vermeij (University of California at Davis) and K. Amamo (Joetsu University of Education) for reviewing the manuscript and providing valuable comments. This study was supported by a Grant-in-Aid for Scientific Research from the Japan Society for the Promotion of Sciences (no. 12740293).

References

- Adams, H. and Adams, A., 1854–1858: *The Genera of Recent Mollusca; Arranged According to Their Organisation*. Vol. 2, 660p. John Van Voorst, London.
- Afshar, F., 1969: Taxonomic revision of the superspecies groups of the Cretaceous and Cenozoic Tellinidae. *Memoirs of the Geological Society of America*, no. 119, p. 1–215, pls. 1–45.
- Bando, Y. and Furuichi, M., 1978: On the marine Tertiary formations (Tonosho Group) in Teshima, Kagawa Prefecture. *Memoirs of the Faculty of Education, Kagawa University*, Series 2, vol. 28, no. 2, p. 65–80. (in Japanese with English abstract)
- Berggren, W. A., Kent, D. V., Swisher, C. C., III and Aubry M.-P., 1995: A revised Cenozoic geochronology and chronostratigraphy. In: Berggren, W. A., Kent, D. V., Aubry, M.-P. and Hardenbol, J., eds., *Geochronology, Time Scales and Global Stratigraphic Correlation (SEPM Special Publication, no. 54)*, p. 129–212.
- Blow, W. H., 1969: Late middle Eocene to Recent planktonic foraminiferal biostratigraphy. In: Bronnimann, P. and Renz, H. H., eds., *Proceedings of the First International Conference on Planktonic Microfossils (Geneva, 1967)*, vol. 1, p. 199–421.
- Cande, S. C. and Kent, D. V., 1995: Revised calibration of the geomagnetic polarity timescale for the Late Cretaceous and Cenozoic. *Journal of Geophysical Research*, vol. 100, no. B4, p. 6093–6095.
- Conrad, T. A., 1867: Description of a new genus of Astartidae. *American Journal of Conchology*, vol. 3, no. 2, p. 191.
- Cox, L. R., 1969: Family Isognomonidae Woodring, 1925. In: Moore, R. C. and Teichert, C., eds., *Treatise on Invertebrate Paleontology, Part N. Mollusca 6*, p. N321–N326. University of Kansas and Geological Society of America.
- Dickerson, R. E., 1917: Climate and its influence upon the Oligocene faunas of the Pacific coast, with descriptions of some new species from the *Molopophorus lincolnensis* Zone. *Proceedings of the California Academy of Sciences, 4th Series*, vol. 7, no. 6, p. 157–193.
- Effinger, W. L., 1938: The Gries Ranch Fauna (Oligocene) of western Washington. *Journal of Paleontology*, vol. 12, no. 4, p. 355–390, pls. 45–47.
- Fuse, K. and Kotaka, T., 1986: The molluscan assemblages from the Hioki Group, Yamaguchi Prefecture, southwest Japan. *Monograph of the Mizunami Fossil Museum*, no. 6, p. 119–141, pls. 17, 18. (in Japanese with English abstract)
- Grant, U. S. IV and Gale, H. R., 1931: Catalogue of the marine Pliocene and Pleistocene Mollusca of California and adjacent regions, with notes on their morphology, classification, and nomenclature, and a special treatment of the Pectinidae and Turridae (including a few Miocene and Recent species), together with a summary of the stratigraphic relations of the formations involved. *Memoirs of the San Diego Society of Natural History*, vol. 1, p. 1–1036.
- Habe, T., 1951–1952: *Genera of Japanese Shells. Pelecypoda Nos. 1–3*. 278 p. Kairui Buken Kankô-kai, Kyoto. (in Japanese)
- Habe, T., 1961: *Colored Illustrations of the Shells of Japan <II>*. ix+3+182+46 p., 66 pls. Hoikusha Pub., Osaka. (in Japanese)
- Habe, T., 1977: *Systematics of Mollusca in Japan. Bivalvia and Scaphopoda*. xiii + 372p. Zukan-no-Hokuryukan, Tokyo. (in Japanese)
- Habe, T., 1981: Bivalvia. In: Koyama, Y., Yamamoto, T., Toki, Y. and Minato, H., eds., *A Catalogue of Molluscs of Wakayama Prefecture, the Province of Kii. I. Bivalvia, Scaphopoda and Cephalopoda*, p. 25–196, pls. 1–13. Publishing Association of the “Catalogue of Molluscs of Wakayama Prefecture”, Wakayama.
- Hatai, K. and Nisiyama, S., 1952: Check list of Japanese Tertiary marine Mollusca. *Science Reports of Tôhoku University, Sendai, 2nd Series (Geology), Special Volume*, no. 3, 464p.
- Hayami, I., 2000: Pectinidae. In: Okutani, T., ed., *Marine Mollusks in Japan*, p. 897–911. Tokai University Press, Tokyo. (in Japanese with English explanation)
- Hayami, I. and Matsumoto, M., 1998: Phylogenetic classification of scallops and evaluation of their taxonomic characters. *Fossils (Palaeontological Society of Japan)*, no. 64, p. 23–35. (in Japanese with English abstract)
- Higo, S., Callomon, P. and Gotô, Y., 1999: *Catalogue and Bibliography of the Marine Shell-bearing Mollusca of Japan. Gastropoda, Bivalvia, Polyplacophora, Scaphopoda*. 749p. Elle Scientific Publications, Yao.
- Honda, Y., 1980: *Venericardia (Cyclocardia) takedai*, new name for *Venericardia (Cyclocardia) elliptica* Takeda, 1953 (preoccupied). *Transactions and Proceedings of the Palaeontological Society of Japan, New Series*, no. 120, p. 466.
- Honda, Y., 1991: Paleogene Molluscan biogeography of Japan. *Saito Ho-on Kai Special Publication*, no. 3 (*Proceedings of Shallow Tethys 3, Sendai 1990*), p. 490–506.
- Honda, Y., 1994: History of the Paleogene molluscan fauna of Japan: a paleogeographic approach. *Palaeogeography, Palaeoclimatology, Palaeoecology*, vol. 108, p. 295–309.
- Huzita, K., 1962: Tectonic development of the Median Zone (Setouti) of southwest Japan, since the Miocene. With special reference to the characteristic structure of central Kinki area. *Journal of Geosciences, Osaka City University*, vol. 4, p. 103–144.
- Huzita, K. and Maeda, Y., 1984: *Geology of the Suma District*. 101p., 5 pls., with a geologic map drawn to a scale of 1:50,000. Geological Survey of Japan, Tsukuba. (in Japanese with English abstract)
- Ibaraki, M., 1994: Age and paleoenvironment of the Tertiary in northwestern Kyushu on the basis of the planktonic foraminifers. *Chikyu Monthly*, vol. 16, no. 3, p. 150–153. (in Japanese, title translated)
- Ikebe, N., 1957: Cenozoic sedimentary basin of Japan—with special reference to the Miocene sedimentary provinces—. *Shinseidai-no-Kenkyu (Cenozoic Research)*, nos. 24–25, p. 1–10. (in Japanese, title translated)
- Iredale, T., 1929: Mollusca from the continental shelf of eastern Australia. No. 2. *Records of the Australian Museum*, vol. 17, no. 4, p. 157–189, pls. 38–41.
- Ishida, S., 1979: A contribution to the paleogeography of the First

- Setouchi Sea in southwest Japan. *News of Osaka Micropaleontologists (NOM)*, no. 7, p. 1-18. (in Japanese)
- Itoigawa, J., 1969: Miocene molluscan fauna from the eastern part of the Setouchi region, Japan. *Fossils (Palaeontological Society of Japan)*, no. 17, p. 50-55. (in Japanese)
- Itoigawa, J., 1971: Miocene molluscan fauna from the eastern district of Chugoku, Southwest Japan. *Fossils (Palaeontological Society of Japan)*, no. 22, p. 29-36. (in Japanese)
- Itoigawa, J., 1983: Miocene molluscan fauna of the eastern part of the Seto Inland Sea coast, Japan. *Bulletin of the Mizunami Fossil Museum*, no. 10, p. 29-39. (in Japanese with English abstract)
- Itoigawa, J. and Shibata, H., 1973: Paleoenvironmental change and correlation based on molluscan assemblages. *Memoirs of the Geological Society of Japan*, no. 8, p. 125-135. (in Japanese with English abstract)
- Itoigawa, J. and Shibata, H., 1986: Molluscan fauna of the Setouchi Miocene Series, southwest Japan. *Palaeontological Society of Japan, Special Papers*, no. 29, p. 149-159, pls. 16, 17.
- Itoigawa, J. and Shibata, H., 1992: Miocene paleogeography of the Setouchi Geologic Province, Japan, a revision. *Bulletin of the Mizunami Fossil Museum*, no. 19, p. 1-12. (in Japanese with English abstract)
- Jones, K. H. and Preston, H. B., 1904: List of Mollusca collected during the commission of H.M.S. "Waterwitch" in the China seas, 1900 - 1903, with description of new species. *Proceedings of the Malacological Society of London*, vol. 6, no. 3, p. 138-151.
- Kafanov, I. A. and Amano, K., 1997: Check list of Cenozoic marine Bivalvia (Mollusca) of Sakhalin and Kurile Islands described by Japanese paleontologists during 1925-1990. *Bulletin of the Mizunami Fossil Museum*, no. 24, p. 11-25.
- Kaikiri, K. and Nishimoto, H., 1995: A catalog of the Miocene Mollusca from the Bihoku and Katsuta Groups in Hiroshima and Okayama Prefectures. (1) New species described from these groups. *Miscellaneous Reports of the Hiwa Museum for Natural History*, no. 33, p. 185-212. (in Japanese)
- Kamada, Y., 1962: Tertiary marine Mollusca from the Joban Coal-field, Japan. *Palaeontological Society of Japan, Special Papers*, no. 8, p. 1-187, pls. 1-32.
- Kamada, Y., 1980: Tertiary molluscan fossils from the coal-fields of Kyushu. *Atlas of Japanese Fossils*, no. 56, p. 331-336. Tsukiji Shokan Publishing, Tokyo. (in Japanese)
- Kasama, T. and Huzita, K., 1957: Cenozoic depositional provinces in Japan and their transitions (1). —Characteristic of the Setouchi Geologic Province and its transitions—. *Shinseidai-no-Kenkyū (Cenozoic Research)*, nos. 24-25, p. 11-18. (in Japanese, title translated)
- Kurita, H., Matsubara, T. and Yamamoto, Y., 2000: An Eocene age of dinoflagellate cysts from the Shikai Formation, Tonosho Group, Shodoshima Island, Kagawa, southwest Japan, and its implications. *Abstracts with Programs, the 149th Regular Meeting, the Palaeontological Society of Japan*, p. 57. (in Japanese)
- Kurita, H., Matsuo, H. and Matsubara, T., 2001: An Eocene age of dinoflagellate cysts from the Tainohata Formation, Kobe Group, western Kobe area, southwest Japan, and its implications. *Abstracts with Programs, the 2001 Annual Meeting, the Palaeontological Society of Japan*, p.184. (in Japanese)
- Lightfoot, J., 1786: *A Catalogue of the Portland Museum, Lately the Property of the Duchess Dowager of Portland, Deceased, Which will be sold by Auction, by Mr. Skinner and Co.* viii + 194p. London.
- Linnaeus, C. von, 1758: *Systema naturae per regna tria naturae, secundum classes, ordines, genera, species, cum characteribus, differentiis, synonymis, locis, Editio decima, reformata, Tome 1.* iv + 823p. Stockholm, Sweden.
- Linnaeus, C. von, 1767: *Systema naturae per regna tria naturae, secundum classes, ordines, genera, species, cum characteribus, differentiis, synonymis, locis, Editio decima, reformata, Tome 1.* Pars 2, p. 533-1327. Stockholm, Sweden.
- MacNeil, F. S., 1967: Cenozoic pectinids of Alaska, Iceland and other northern regions. *U. S. Geological Survey Professional Paper 553*, p. 1-57, pls. 1-25.
- Masuda, K., 1962: Tertiary Pectinidae of Japan. *Science Reports of Tohoku University, Sendai, 2nd Series (Geology)*, vol. 33, no. 2, p. 117-238, pls. 18-27.
- Matsubara, T., 2001: Molluscan fauna from the Tertiary Maejima Formation in Maejima Island, Okayama Prefecture, southwest Japan. *Abstracts with Programs, the 150th Regular Meeting, the Palaeontological Society of Japan*, p. 86. (in Japanese)
- Matsukuma, A., Goshima, S. and Kuwahara, Y., 1988: Taxonomy and geographical distribution of *Megangulus* (Mollusca: Bivalvia) from the northern Pacific. *Memoirs of the National Science Museum, Tokyo*, no. 21, p. 113-122.
- Matsumoto, E., 1964: The Asagai-Poronaian molluscs from Shizuoka Prefecture, central Japan. *Memoirs of the College of Science, University of Kyoto, Series B*, vol. 31, no. 2, p. 95-112, pl. 2.
- Matsuo, H., 1987: *Excavating Fossils from the Kobe Group*. 138 p. Kôbe Shizenshi Shuppankai, Kobe. (in Japanese, title translated)
- Miyachi, M. and Sakai, H., 1991: Zircon fission-track ages of some pyroclastics rocks from the Tertiary formations in northwest Kyushu, Japan. *Journal of the Geological Society of Japan*, vol. 97, no. 8, p. 671-674. (in Japanese)
- Mizuno, A., 1952: Descriptions of the Paleogene molluscs from Sakito, Nagasaki Prefecture, Japan. *Transactions and Proceedings of the Palaeontological Society of Japan, New Series*, no. 5, p. 185-193, pl. 17.
- Mizuno, A., 1956: A preliminary note on the megafaunal zones of the Paleogene in northwestern Kyûshû, Japan (for correlation of the Paleogene formations in Japan). *Bulletin of the Geological Survey of Japan*, vol. 7, no. 6, p. 261-270, pls. 1, 2. (in Japanese with English abstract)
- Mizuno, A., 1962: Paleogene and lower Neogene biochronology of western Japan. II. On the correlation and biochronologic division of the Paleogene strata in the vicinity of the Nishisonogi Peninsula, northwestern Kyûshû. *Journal of the Geological Society of Japan*, vol. 68, no. 807, p. 687-693. (in Japanese with English abstract)
- Mizuno, A., 1964: Paleogene and early Neogene molluscan faunas in west Japan. *Geological Survey of Japan, Report*, no. 204, p. 1-72.
- Mizuno, K., Hattori, H., Sangawa, A. and Takahashi, Y., 1990: *Geology of the Akashi District*. 90p., with a geologic map drawn to a scale of 1: 50,000. Geological Survey of Japan, Tsukuba. (in Japanese with English abstract)
- Nagao, T., 1928a: Palaeogene fossils from the Island of Kyûshû, Japan. Part 1. *Science Reports of Tôhoku Imperial University, Sendai, 2nd Series (Geology)*, vol. 9, no. 3, p. 97-128, pls. 18-22.
- Nagao, T., 1928b: Palaeogene fossils from the Island of Kyûshû, Japan. Part 2. *Science Reports of Tôhoku Imperial University, Sendai, 2nd Series (Geology)*, vol. 12, no. 1, p. 11-140, pls. 1-17.

- Nemoto, N. and O'Hara, S., 2001: Molluscan assemblages and sedimentary environments of the Shiramizu Group in the northern area of the Joban district. *Taira Chigaku Dôkôkai Kaihō*, no. 23, p. 21–51. (in Japanese, with English abstract)
- Nishimoto, H. and Itoigawa, J., 1977: Temporal succession of the Cenozoic selachian assemblages in southwest Japan. *Bulletin of the Mizunami Fossil Museum*, no. 4, p. 144–146, tab. 2. (in Japanese, title translated)
- Noda, H., 1966: The Cenozoic Arcidae of Japan. *Science Reports of Tohoku University, Sendai, 2nd Series (Geology)*, vol. 38, no. 1, p. 1–161, 2p. indices, pls. 1–14.
- Noda, H. and Furuichi, M., 1972: A new species of *Isognomon* from the Miocene Teshima Formation, Shodo-gun, Kagawa Prefecture, southwestern Japan. *Venus (Japanese Journal of Malacology)*, vol. 31, no. 3, p. 119–121. (in Japanese, with English abstract and description)
- Nomura, R., 1992: Miocene benthic foraminifera from the Bihoku Group: the geologic age of the Foram. Sharp Line in southwest Japan and the relation to the opening of the Sea of Japan. *Journal of the Geological Society of Japan*, vol. 98, no. 7, p. 587–610.
- Nomura, S., 1935a: Miocene Mollusca from the Nisi-Tugaru District, Aomori-ken, northeast Honshû, Japan. *Saito Ho-on Kai Museum, Research Bulletin*, no. 6, p. 19–81, pls. 2–8.
- Nomura, S., 1935b: Miocene Mollusca from Siogama, northeast Honshû, Japan. *Saito Ho-on Kai Museum, Research Bulletin*, no. 6, p. 193–234, pls. 16, 17.
- Nomura, S., 1936: A new species of the genus *Septifer* from Japan (*S. keeni*). *Venus (Japanese Journal of Malacology)*, vol. 6, no. 4, p. 205–208.
- Ogasawara, K., 1996: Notes on adaptational process of cold-water molluscs on the basis of Japanese Cenozoic molluscan records. *Annali dei Musei Civici di Rovereto Sezione Archaeologia, Storia e Scienze Naturali*, vol. 11 Supplemento (Reports of Shallow Tethys 4, International Symposium, Albrechtsberg (Austria), 8–11 September, 1994), p. 277–286.
- Okada, H., 1992: Calcareous nannofossils and biostratigraphy of the Paleogene sequences of the northern Kyushu, Japan. *Journal of the Geological Society of Japan*, vol. 98, no. 6, p. 509–528.
- Okada, H. and Bukry, D., 1980: Supplementary modification and introduction of code numbers to the low-latitude coccolith biostratigraphic zonation (Bukry, 1973; 1975). *Marine Micropaleontology*, vol. 5, p. 321–325.
- Okamoto, K., 1970: Tertiary formations in the area around Kottoharbor, Hôhoku-machi, Toyoura-gun, Yamaguchi Prefecture. *Journal of the Geological Society of Japan*, vol. 76, no. 5, p. 235–246. (in Japanese with English abstract)
- Okamoto, K. and Imamura, S., 1964: Tertiary formations in the environs of Yuya-wan, Yamaguchi Prefecture. *Geological Report of Hiroshima University*, no. 13, p. 42, pls. 1–6. (in Japanese with English abstract)
- Okumura, K. and Sato, A., 1999: Molluscan assemblages from the early or middle Miocene Tonosho Group in Shodo-shima and Te-shima, in [the] Seto Inland Sea, western Japan. *Research Bulletin of Natural Sciences, Naruto University of Education*, vol. 14, p. 1–14. (in Japanese with English abstract)
- Otuka, Y., 1940: Miocene Mollusca from Tesio Province, Hokkaidô. *Japanese Journal of Geology and Geography*, vol. 17, nos. 1–2, p. 91–99, pl. 11.
- Oyama, K., 1951: Three new fossil shells from [the] Palaeogene of Kyûshû. *Kôbutsu-to-Chishitsu (Mineral and Geology)*, vol. 4, nos. 1–2, p. 56. (in Japanese)
- Oyama, K. and Mizuno, A., 1958: On the new forms of Paleogene molluscs from Japan. *Bulletin of the Geological Survey of Japan*, vol. 9, no. 9, p. 1–18, pls. 1–4.
- Oyama, K., Mizuno, A. and Sakamoto, T., 1960: *Illustrated Handbook of Japanese Paleogene Molluscs*, 244 p., 71 pls., Geological Survey of Japan, Kawasaki.
- Ozaki, H., 1956: Two new fossils from the Namigata Formation in Okayama Prefecture, Japan. *Bulletin of the National Science Museum (Tokyo), New Series*, vol. 3, no. 1, p. 7–8, pl. 2.
- Ozaki, M., 1999: Fission-track ages of the Hioki and Yuyawan Groups in northwestern Yamaguchi Prefecture, southwest Japan —Reconsideration of stratigraphic position of the Igami Formation—. *Earth Science (Chikyu Kagaku)*, vol. 53, p. 393–398. (in Japanese)
- Ozaki, M. and Matsuura, N., 1988: *Geology of the Sanda District*. 93 p., 2pls., with a geologic map drawn to a scale of 1: 50,000. Geological Survey of Japan, Tsukuba. (in Japanese with English abstract)
- Ozaki, M., Matsuura, N. and Sato, Y., 1996: Geologic age of the Kobe Group. *Journal of the Geological Society of Japan*, vol. 102, no. 2, p. 73–83. (in Japanese, with English abstract)
- Phillippi, R. A., 1844: *Enumeratio molluscorum Siciliae cum viventium tum in tellure tertiaria fossilium quae in itinere suo observavit*. Tom 2. iv + 303p., 13–28 pls. Eduard Anton, Halle, Germany.
- Récluz, M. C., 1848: Description d'un nouveau genre de coquilles bivalves nommé Septifère (Septifer). *Revue zoologique par la société cuvierienne*, 1848, p. 275–279.
- Röding, P. F., 1798: *Museum Boltenianum, sive catalogus cimeliorum e tribus regnis naturae quae olim collegerat Joa. Fried. Bolten M.D.p.d., Pars Secunda*. viii–199p. Johan Cristi Trappii, Hamburg.
- Saito, M., 1962: The geology of Kagawa and northern Ehime Prefectures, Shikoku, Japan. *Memoirs of the Faculty of Agriculture, Kagawa University*, no. 10, p. 74, pls. 1–17, 3 append. maps.
- Saito, M., Bando, Y. and Noda, H., 1970: Fossil molluscs from Teshima, Shôdo-gun, Kagawa Prefecture, southwest Japan. *Transactions and Proceedings of the Palaeontological Society of Japan, New Series*, no. 77, p. 276–289, pl. 31.
- Saito, T. and Okada, H., 1984: Oligocene calcareous planktonic microfossil biostratigraphy of the Ashiya Group, northern Kyushu. In, Saito, T., Okada, H. and Kaiho, K., eds., *Biostratigraphy and International Correlation of the Paleogene System in Japan*, p. 85–87. Yamagata University, Yamagata. (in Japanese, title translated)
- Sakai, H., Nishi, H. and Miyachi, M., 1990: Geologic age of the unconformity between the Sasebo and the Nojima Groups, northwest Kyushu and its tectonic significances. *Journal of the Geological Society of Japan*, vol. 96, no. 4, p. 327–330.
- Sato, M., 1938: *Explanatory Text of the Geologic Map of Japan, Saidaiji*. 54 + vii p., with a geologic map drawn to a scale of 1: 75,000. Geological Survey of Japan, Tokyo. (in Japanese with English abstract)
- Savazzi, E., 1995: Parasite-induced teratologies in the Pliocene bivalve *Isognomon maxillatus*. *Palaeogeography, Palaeoclimatology, Palaeoecology*, vol. 116, p. 131–139.
- Scarlato, O. A., 1961: The bivalvian molluscs of the superfamily Tellinacea of the Chinese seas. *Studia Marina Sinica*, no. 8, p. 31–114, pls. 1–13. (in Chinese, with Russian abstract and description of new taxa)
- Seto, K., Yano, T., Matsumoto, T., Yamamoto, Y., Nakano, Y. and Fujii, K., 2000: Geotraverse of the Chugoku Mountains (1): Sedimentary environment change of the Miocene series

- (Bihoku Group and equivalent formations). *Field Guide Book, the 107th Annual Meeting of the Geological Society of Japan*, p. 1–22. (in Japanese)
- Shibata, H. and Itoigawa, J., 1980: Miocene paleogeography of the Setouchi Province, Japan. *Bulletin of the Mizunami Fossil Museum*, no. 7, p. 1–49, append. figs. 38–43. (in Japanese with English abstract)
- Shibata, H. and Kato, S., 1988: Miocene molluscs from the Oga Formation of Shimada City, Shizuoka Prefecture, Japan. *Bulletin of the Mizunami Fossil Museum*, no. 15, p. 7–38, pls. 2, 3.
- Shuto, T., 1991: Origin of the Oligocene Ashiya Fauna — A paleoceanographical consideration —. *Saito Ho-on Kai, Special Publication*, no. 3 (*Proceedings of Shallow Tethys 3, Sendai 1990*), p. 269–281.
- Shuto, T. and Shiraishi, N. (sic), 1971: A note on the community-paleoecology of the Ashiya Group. *Science Reports of Kyushu University*, vol. 10, p. 253–270. (in Japanese with English abstract) [Shiraishi, S.]
- Sinelnikova, V. N., 1975: Mio-Pliocene Pectinidae of Kamchatka. *Transactions of the Academy of Sciences, USSR*, vol. 229, 140 p., 25 pls. (in Russian)
- Suzuki, S., Tanaka, H., Danbara, T. and Sawada, S., 1995: Discovery of the Paleogene tuff beds from the "Mountain Gravels". *Abstracts, the 102nd Annual Meeting of the Geological Society of Japan*, p. 129. (in Japanese)
- Taguchi, E., 1992: Five new species of fossil Mollusca from the Miocene Katsuta Group in Okayama Prefecture, southwest Japan. *Venus (Japanese Journal of Malacology)*, vol. 51, no. 3, p. 163–174.
- Tai, Y., 1959: Miocene microbiostratigraphy of west Honshu, Japan. *Journal of Science of Hiroshima University, Series C*, vol. 2, no. 4, p. 265–395, pls. 37–43.
- Taira, A., Tashiro, M., Okamura, M. and Katto, J., 1980: The geology of the Shimanto Belt in Kochi Prefecture, Shikoku, Japan. In: Taira, A. and Tashiro, M., eds., *Geology and Paleontology of the Shimanto Belt, Shikoku, Japan (Prof. J. Katto Memorial Volume)*, p. 319–389. Kochi Branch, Rin'ya Kousai-kai, Kochi. (in Japanese with English abstract)
- Takayasu, K., Yamazaki, H., Ueda, T., Akagi, S., Matsumoto, T., Nomura, R., Okada, S., Sawada, Y., Yamauchi, S. and Yoshitani, A., 1992: Miocene stratigraphy and paleogeography of the San'in district, southwest Japan. *Memoirs of the Geological Society of Japan*, no. 37, p. 97–116. (in Japanese with English abstract)
- Takeda, H., 1953: The Poronai Formation (Oligocene Tertiary) of Hokkaido and South Sakhalin and its fossil fauna. *Studies on Coal Geology*, no. 3, p. 1–103 (English part), p. 1–45 (Japanese part), pls. 1–13.
- Tomida, Y., 1986: Recognition of the genus *Entelodon* (Artiodactyla, Mammalia) from the Joban Coalfield, Japan, and the age of the Iwaki Formation. *Bulletin of the National Science Museum, Tokyo, Series C*, vol. 12, no. 4, p. 165–170.
- Tsuchi, R., Shuto, T. and Ibaraki, M., 1987: Geologic ages of the Ashiya Group, north Kyushu from view point of planktonic foraminifera. *Reports of the Faculty of Science, Shizuoka University*, vol. 21, p. 109–119.
- Tsuda, K., 1965: Neogene molluscan assemblages in the Inner Zone of northeast Japan — with special reference to the middle Miocene assemblages. *Fossils (Palaeontological Society of Japan)*, no. 10, p. 18–23. (in Japanese)
- Ueda, T., 1991: The Miocene Bihoku Group in the Miyoshi-Shobara area, Hiroshima Prefecture, west Japan — molluscan assemblages and paleoenvironment —. *Journal of the Geological Society of Japan*, vol. 97, no. 4, p. 279–295. (in Japanese with English abstract)
- Waller, T. R., 1993: The evolution of "*Chlamys*" (Mollusca: Bivalvia: Pectinidae) in the tropical western Atlantic and eastern Pacific. *American Malacological Bulletin*, vol. 10, no. 2, p. 195–249.
- Wang, Zh., 1996: Family Pectinidae. In: Qi, Z. ed., *Economic Mollusca of China*, p. 181–189. Zhongguo Nongye Pub., Beijing. (in Chinese)
- Yabumoto, K. and Uyeno, T., 1994: Late Mesozoic and Cenozoic fish faunas of Japan. *The Island Arc*, vol. 3, p. 255–269.
- Yamamoto, Y., 2001: Shallow marine paleoenvironments reconstructed from the Tertiary formation in Ushimado-Maejima, Okayama Prefecture, SW Japan. *Humans and Nature*, no. 12, p. 13–30. (in Japanese with English abstract)
- Yamamoto, Y., Jiju, K., Matsubara, T. and Kagami, H., 2000a: Strontium isotope ages of the Tertiary fossil carbonates from the Western Setouchi Province, Japan. *Abstracts with Programs, the 149th Regular Meeting, the Palaeontological Society of Japan*, p. 56. (in Japanese)
- Yamamoto, Y., Kurita, H. and Matsubara, T., 2000b: Eocene calcareous nannofossils and dinoflagellate cysts from the Iwaya Formation in Awajishima Island, Hyogo Prefecture, southwest Japan, and their geologic implications. *Journal of the Geological Society of Japan*, vol. 106, no. 6, p. 379–382. (in Japanese with English abstract)
- Yanagisawa, Y. and Suzuki, Y., 1987: Diatoms and silicoflagellates from the Oligocene Shirasaka Formation of the Joban Coalfield, northeast Japan. *Bulletin of the Geological Survey of Japan*, vol. 38, no. 2, p. 81–98. (in Japanese with English abstract)
- Yano, T., Moriyama, K., Okimura, Y. and Seto, K., 1995a: Sedimentation on a rocky coast and sea level change — Sedimentary environment of the Miocene Namigata Formation, Okayama Prefecture, Japan —. *Earth Science (Chikyu Kagaku)*, vol. 49, no. 2, p. 115–142. (in Japanese with English abstract)
- Yano, T., Moriyama, K., Seto, K. and Okimura, Y., 1995b: A condensed section of non-tropical limestone — Sedimentary environment of the limestone in the Miocene Namigata Formation, Okayama Prefecture, Japan —. *Earth Science (Chikyu Kagaku)*, vol. 49, no. 1, 17–31. (in Japanese with English abstract)
- Yokoyama, M., 1920: Fossils from the Miura Peninsula and its immediate north. *Journal of the College of Science, Imperial University of Tokyo*, vol. 39, art. 6, p. 1–193, pls. 1–20.
- Yokoyama, M., 1924: Molluscan remains from the lowest part of the Jo-Ban Coal-Field. *Journal of the College of Science, Imperial University of Tokyo*, vol. 45, art. 3, p. 1–22, pls. 1–5.
- Yokoyama, M., 1927: Tertiary fossils from western Hizen. *Journal of the Faculty of Science, Imperial University of Tokyo, Section 2*, vol. 2, pl. 50, p. 183–190, pl. 50.
- Yokoyama, M., 1932: Neogene shells from South Karafuto. *Imperial Geological Survey, Report*, no. 111, p. 1–15 (Japanese part), p. 1–12 (English part), pls. 1–4.



Matsubara, Takashi. 2002. "Molluscan fauna of the "Miocene" Maéjima Formation in Maéjima Island, Okayama Prefecture, southwest Japan." *Paleontological research* 6, 127–145.

View This Item Online: <https://www.biodiversitylibrary.org/item/124608>

Permalink: <https://www.biodiversitylibrary.org/partpdf/148362>

Holding Institution

Smithsonian Libraries and Archives

Sponsored by

Biodiversity Heritage Library

Copyright & Reuse

Copyright Status: In Copyright. Digitized with the permission of the rights holder.

License: <http://creativecommons.org/licenses/by-nc-sa/3.0/>

Rights: <https://www.biodiversitylibrary.org/permissions/>

This document was created from content at the **Biodiversity Heritage Library**, the world's largest open access digital library for biodiversity literature and archives. Visit BHL at <https://www.biodiversitylibrary.org>.