

GEOGRAPHIC VARIATION IN THE LEAF ESSENTIAL OILS OF *TAXODIUM* (CUPRESSACEAE)

Robert P. Adams

Biology Department, Baylor University, Box 97388, Waco, TX
76798, USA Robert_Adams@baylor.edu

Michael A. Arnold and Andrew R. King

Department of Horticultural Sciences, TAMU 2133
Texas A & M University, College Station, TX 77843-2133

and

Geoffrey C. Denny

G. C. Denny Horticulture, 12905 Co. Rd. 675, Parrish, FL 34219

ABSTRACT

Volatile leaf oils of *Taxodium distichum*, *T. d.* var. *imbricarium* and *T. mucronatum* were found to be high in α -pinene (27-83%), except from the Texas Hill country, where the oil was lower in α -pinene (5-17%) and very high in β -phellandrene (59-78%). Both *T. d.* var. *distichum* and var. *imbricarium* appear to have chemical races: high/low α -pinene and low/high limonene/ β -phellandrene. Based on the leaf terpenoids, *T. mucronatum* in Mexico appears to have two variants: Durango and Oaxaca-Guatemala. The oils of *T. distichum* have two regional groups: South Central USA and Texas Hill Country - Rio Grande Valley. The oil of the putative *T. mucronatum* from Bolleros, MX was found to be more similar to *T. distichum* than to any *T. mucronatum* in the study. Putative *T. d.* var. *imbricarium* from Fowl River, AL was found to have oil like *T. d.* var. *distichum*, not like *T. d.* var. *imbricarium* from Tampa, FL. *Phytologia* 94(1): 53-70 (April 2, 2012).

KEY WORDS: *Taxodium distichum*, *T. d.* var. *imbricarium* (*T. ascendens*), *T. mucronatum*, terpenes, leaf essential oil composition, geographic variation.

Taxodium Rich. is a small genus with one to three species. Britton (1926), Dallimore & Jackson (1966) and Rehder (1940) all recognized three species: bald cypress, *T. distichum* (L.) Rich., pond cypress, *T. ascendens* Brongn. and Montezuma or Mexican bald cypress, *T. mucronatum* Ten. Watson (1985) treated *T. ascendens* as *T. d.* var. *imbricarium* (Nutt.) Croom. Both Farjon (2005) and Eckenwalder (2009) recognized *T. distichum*, *T. d.* var. *imbricarium* and *T. mucronatum*. Denny (2007) treated the genus as monotypic with one species, *T. distichum* and two varieties: var. *imbricarium* and var. *mexicanum* (Carr.) Gord. (= *T. mucronatum*). Denny (2007) and Denny and Arnold (2007) give a lucid discussion of the historical nomenclature of the genus.

There has been surprisingly little research on the leaf essential oils of *Taxodium*. A very early paper on the volatile oil from the seed cones of *T. distichum* (Odell, 1912) reported dextro pinene (85%), dextro limonene (5%), a "pseudo terpene alcohol (2%), carvone (3%) and a tricyclic sesquiterpene (3%) with a yield of 1-2%. Flamini et al. (2000) examined the essential oils from seed cones, leaves and branches from cultivated trees of *T. distichum* in North Tuscany, Italy. They found the oils from seed cones, leaves and branches were dominated by α -pinene (71.3, 79.9, 57.3%, respectively). The oils shared most components, but the seed cones were higher in limonene (18.7%). El Taunawy et al. (1999) reported that essential oil from seed cones of *T. distichum* grown in Giza, Egypt contained α -pinene (87.3%), camphene (1.0%), β -pinene (1.7%), myrcene (2.0%), limonene (1.3%) and thujopsene (3.7%) with 38 trace components. Ogunwande et al. (2007), in a study of cytotoxic effects of *T. distichum* seed cone and leaf oils from a tree cultivated in Ibadan, Nigeria, reported 60.5% α -pinene, 17.6% thujopsene, and 29 other compounds in seed cones, but only 0.9% α -pinene in leaves! In fact, α -pinene accounted for nearly all the monoterpene fraction.

No study of leaf oils of *Taxodium* from native materials in the United States, Mexico and Guatemala was found in the literature. The purpose of this study was to report on leaf essential oils of *Taxodium distichum*, *T. d.* var. *imbricarium* and *T. mucronatum* and examine geographic variation in these oils.

MATERIALS AND METHODS

Plant material: Seeds were collected by Denny (2007) in late summer and fall, 2003 and germinated and grown in containers in spring, 2004. Subsequently, seedlings were transplanted to the Texas A & M University Horticulture Farm, College Station, Texas (30°37'38.222" N, 96°22'18.505" W). The site soil was a Boonville Series, fine, smectitic, thermic chromic vertic albaqualf, with a mean soil pH of 6.4. From the 22 *Taxodium* collection sources, 9 were sampled for this study (Fig. 1) as follows:

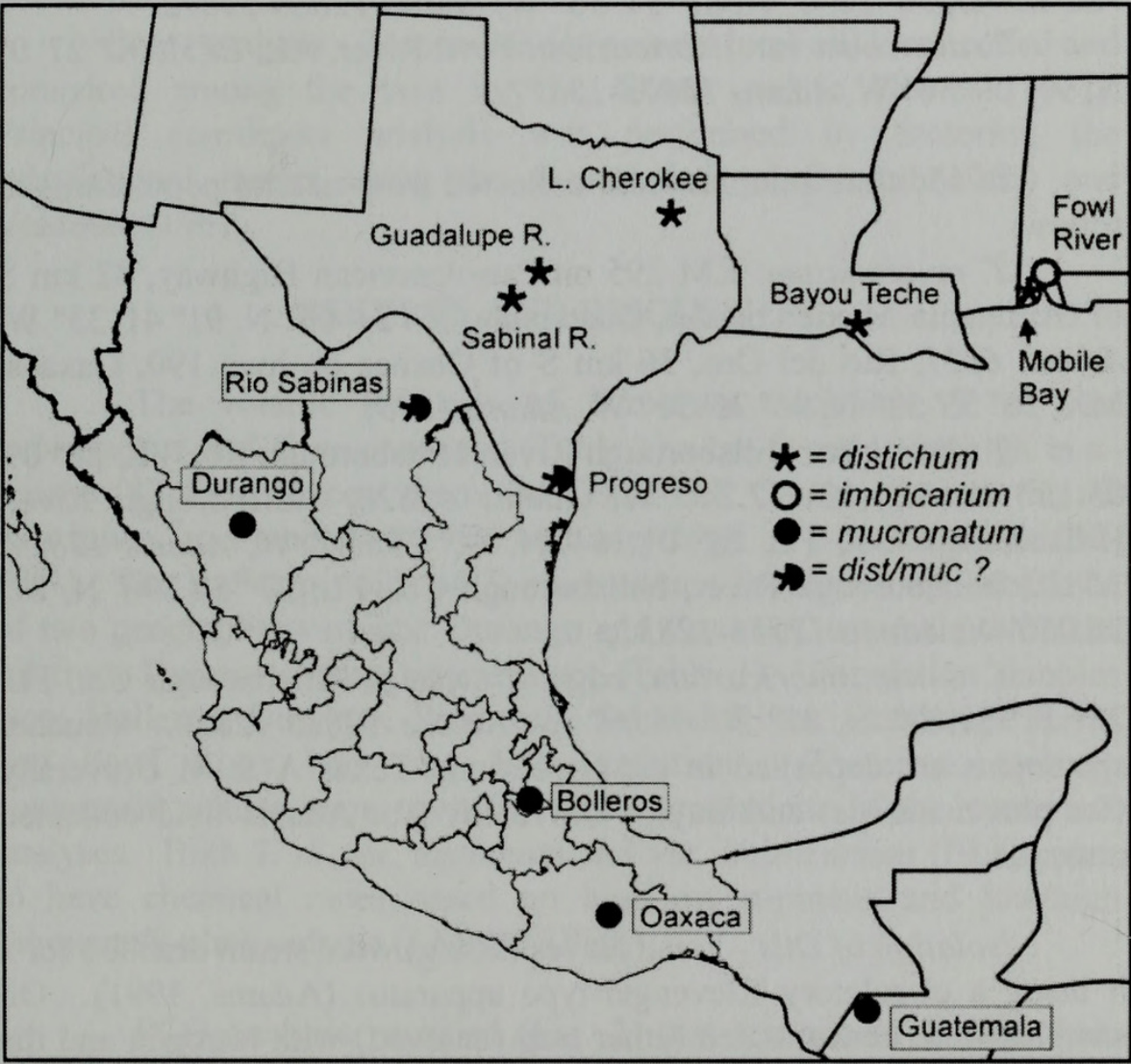


Figure 1. Locations of populations sampled for this study. Sites at Tampa, FL not shown, see text for details.

T. mucronatum: Rio Nazas, Durango, MX, MX2M, 25° 18' 36" N, 104° 38' 24" W, *Adams* 12833-12837; Rio Sabinas, Coah., MX, *Adams* 13039-13043, Bolleros, DF, MX, MX3M, 19° 30' 0" N, 98° 54' 36" W, *Adams* 12838-12842; Progreso, TX, MX5M, 26° 4' 12" N, 97° 54' 36" W, *Adams* 12843-12847.

T. distichum: Guadalupe River, TX, TX2D, 30° 4' 12" N, 99° 17' 24" W, *Adams* 12848-12852; Sabinal River, TX, TX5D, 29° 9' 36" N, 99° 28' 12" W, *Adams* 12853-12857; Lake Cherokee, TX, EP1D, 32° 20' 24" N, 94° 42' 0" W, *Adams* 12858-12862; Bayou Teche, LA, EP3D, 29° 5' 24" N, 91° 12' 6" W, *Adams* 12863-12867; Mobile Bay, AL, EP4D, 30° 36' 0" N, 87° 54' 36" W, *Adams* 12868-12872.

T. distichum var. *imbricarium*: Fowl River, AL, EP5I, 30° 27' 0" N, 99° 06' 36" W, *Adams* 12873-12877.

In addition, samples were collected from natural populations as follow:

T. mucronatum: KM 295 on Pan-American Highway, 42 km S of Guatemala-Mexico border, Guatemala, 15° 24' 05" N, 91° 41' 33" W, *Adams* 6857, Rio del Oro, 36 km S of Oaxaca on hwy 190, Oaxaca, MX, 16° 55' 52" N, 96° 25' 31" W, *Adams* 6873;

T. distichum: Hillsborough River, Hillsborough Co., FL, 28° 09' 05.15" N, 82° 13' 37.24" W, *Adams* 12828, Hillsborough River, Hillsborough Co., FL, 28° 01.164' N, 82° 27.881' W, *Adams* 12829-12830, Hillsborough River, Hillsborough Co., FL, 27° 59.796' N, 82° 28.010' W, *Adams* 12831-12832;

T. d. var. *imbricarium*: edge of swamp, Hillsborough Co., FL, 28° 11' 39.80" N, 82° 30' 54.09" W, *Adams* 12823-12827. Voucher specimens are deposited in the Herbarium, Texas A & M University (for plot materials) and Baylor University (for *Adams* field collected materials).

Isolation of Oils - Fresh leaves (200 g) were steam distilled for 2 h using a circulatory Clevenger-type apparatus (*Adams*, 1991). Oil samples were concentrated (ether trap removed) with nitrogen and the samples stored at -20°C until analyzed. Extracted leaves were oven dried (100°C, 48 h) for determination of oil yields.

Chemical Analyses - Oils from 10-15 trees of each of the taxa were analyzed and average values reported. Oils were analyzed on a

HP5971 MSD mass spectrometer, scan time 1/ sec., directly coupled to a HP 5890 gas chromatograph, using a J & W DB-5, 0.26 mm x 30 m, 0.25 micron coating thickness, fused silica capillary column (see Adams, 2007 for operating details). Identifications were made by library searches of our volatile oil library (Adams, 2007), using the HP Chemstation library search routines, coupled with retention time data of authentic reference compounds. Quantitation was by FID on an HP 5890 gas chromatograph using a J & W DB-5, 0.26 mm x 30 m, 0.25 micron coating thickness, fused silica capillary column using the HP Chemstation software.

Data Analysis - Terpenoids (as percent total oil) were coded and compared among the taxa by the Gower metric Gower (1971). Principal coordinate analysis was performed by factoring the associational matrix using the formulation of Gower (1966) and Veldman (1967).

RESULTS AND DISCUSSION

The volatile leaf oils of *Taxodium distichum*, *T. d.* var. *imbricarium* and *T. mucronatum* (Table 1) were found to be high in α -pinene (27-83%), except from the Texas Hill Country, where the oil was lower in α -pinene (5-17%) and very high in β -phellandrene (59-78%). The leaf terpenoids of *T. mucronatum* in Mexico appears to be of two geographic variants: Durango and Oaxaca-Guatemala, with the oil from Durango being very distinct (Table 1). Population samples from Bolleros, Durango, Progreso, Sabinal River, Guadalupe River and Fowl River had very little variation. Therefore, average component values were used for these populations in the numerical analyses. Both *T. d.* var. *distichum* and var. *imbricarium* (FL) appear to have chemical races based on high/low α -pinene and low/high limonene/ β -phellandrene (LMNN/BPHL).

PCO analysis revealed (Fig. 2) that the oils of *T. distichum* appear to be composed of two regional groups: South Central USA and Texas Hill Country - RGV (Rio Grande Valley). Putative *T. mucronatum* from Bolleros, MX is more similar to *T. distichum* than to any *T. mucronatum* in the study. Rio Sabinas samples consisted of four low α -pinene samples that were very similar to the Hill Country/ RGV

samples and one high α -pinene tree that has affinities to the Durango and Bolleros trees (Fig. 2). Guatemala - Oaxaca plants form a group (Fig. 2). Durango trees have the most distinct oil (Table 2, Fig. 2).

The low α -pinene trees from the South Central USA cluster with Texas Hill Country - RGV trees (Fig. 2), but have a link to the high α -pinene South Central USA plants. It may be that these low α -pinene trees represent a genotype transplanted from the Hill Country, introgression or a chemical polymorphism. The Progresso, TX and Rio Sabinas (low α -pinene) trees cluster with the Texas Hill country trees (Sabinal R., TX; Guadalupe R.) and not with any *T. mucronatum* in the study (Fig. 2).

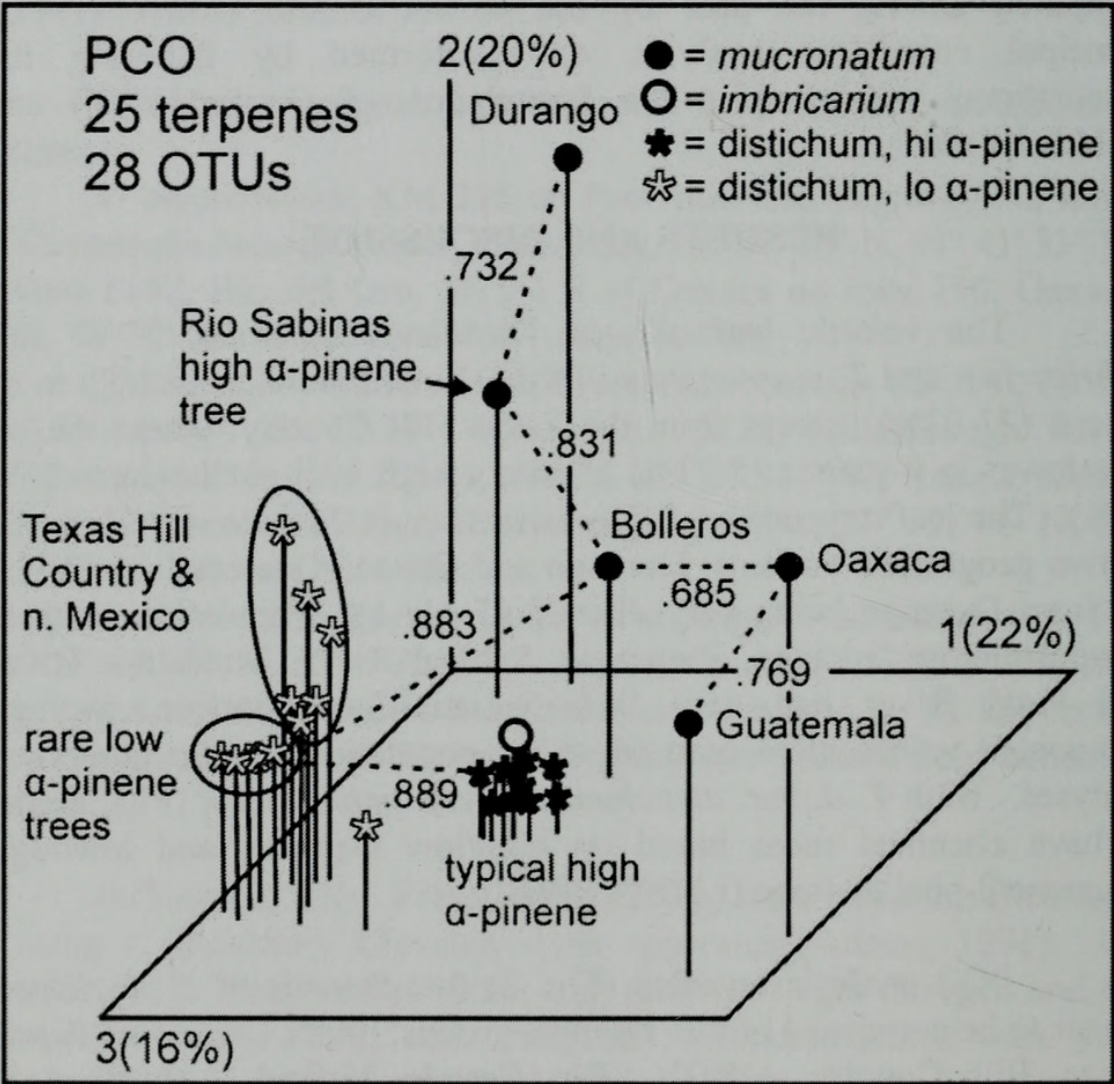


Figure 2. PCO based on 25 terpenes. Numbers next to dotted lines (minimum links) are similarities.

The imbricate leafed trees (cf. *T. distichum* var. *imbricarium*) from Fowl River, AL, have a leaf oil like that of *T. d.* var. *distichum* (Fig. 2).

To supplement the aforementioned samples, additional materials of *T. d.* var. *imbricarium* and *T. d.* var. *distichum* were collected from near Tampa, FL. Surprisingly, the oils of var. *imbricarium* contained both hi- and low α -pinene types (Table 2). A minimum spanning network without the intermediate oils, shows that the oils of var. *imbricarium* (FL) have a distinctive terpene pattern (Fig. 3, Table 1, see germacrene D, α -muurolene, δ -cadinene, α -cadinol). However, *imbricarium* (AL) is essentially the same as var. *distichum* from the South Central USA.

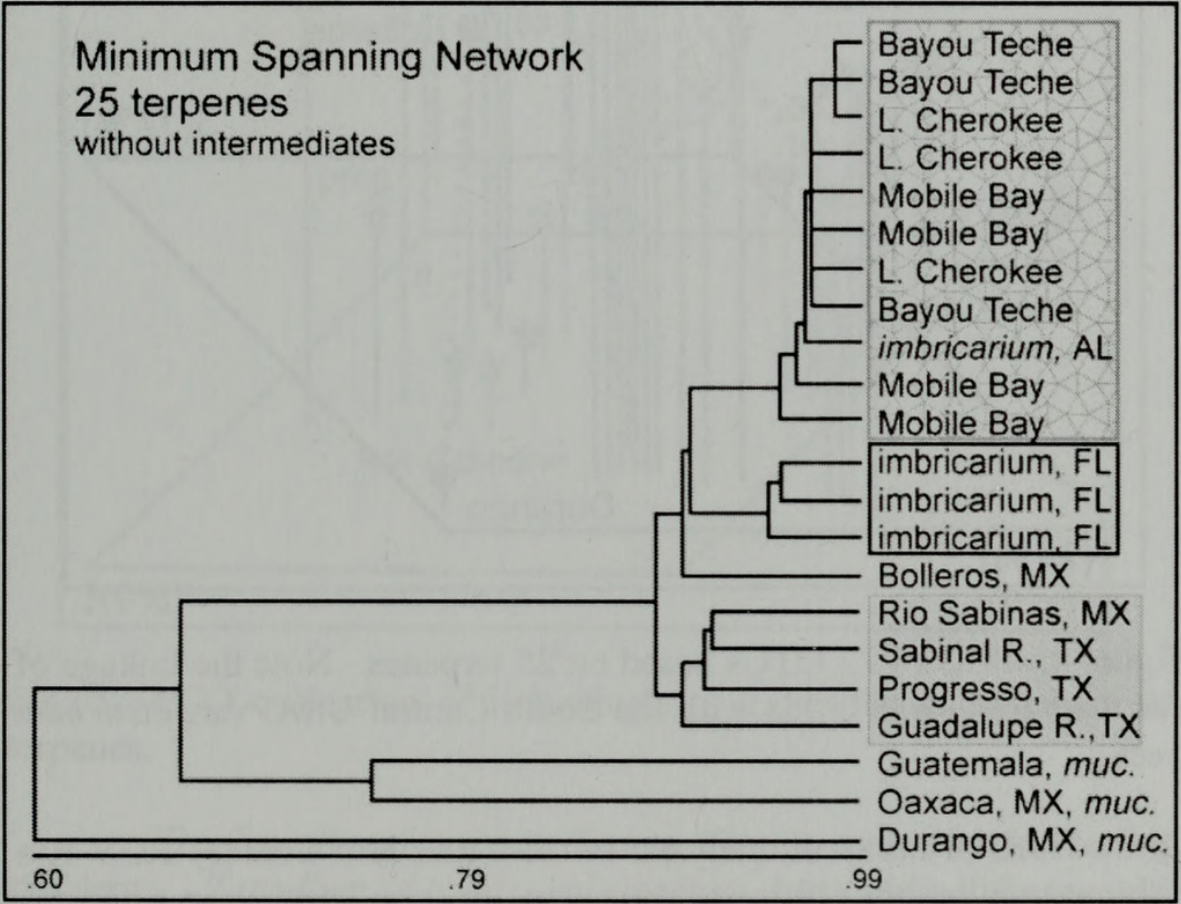


Figure 3. Minimum spanning network showing the placement of var. *imbricarium*, FL.

PCO of these 22 OTUs (Fig. 4) shows that the oils of the Florida var. *imbricarium* trees are most similar to var. *distichum* from

the South Central USA. The Texas Hill Country-n Mexico oils are quite distinct, as are the Durango and Guatemala-Oaxaca oils (Fig. 4).

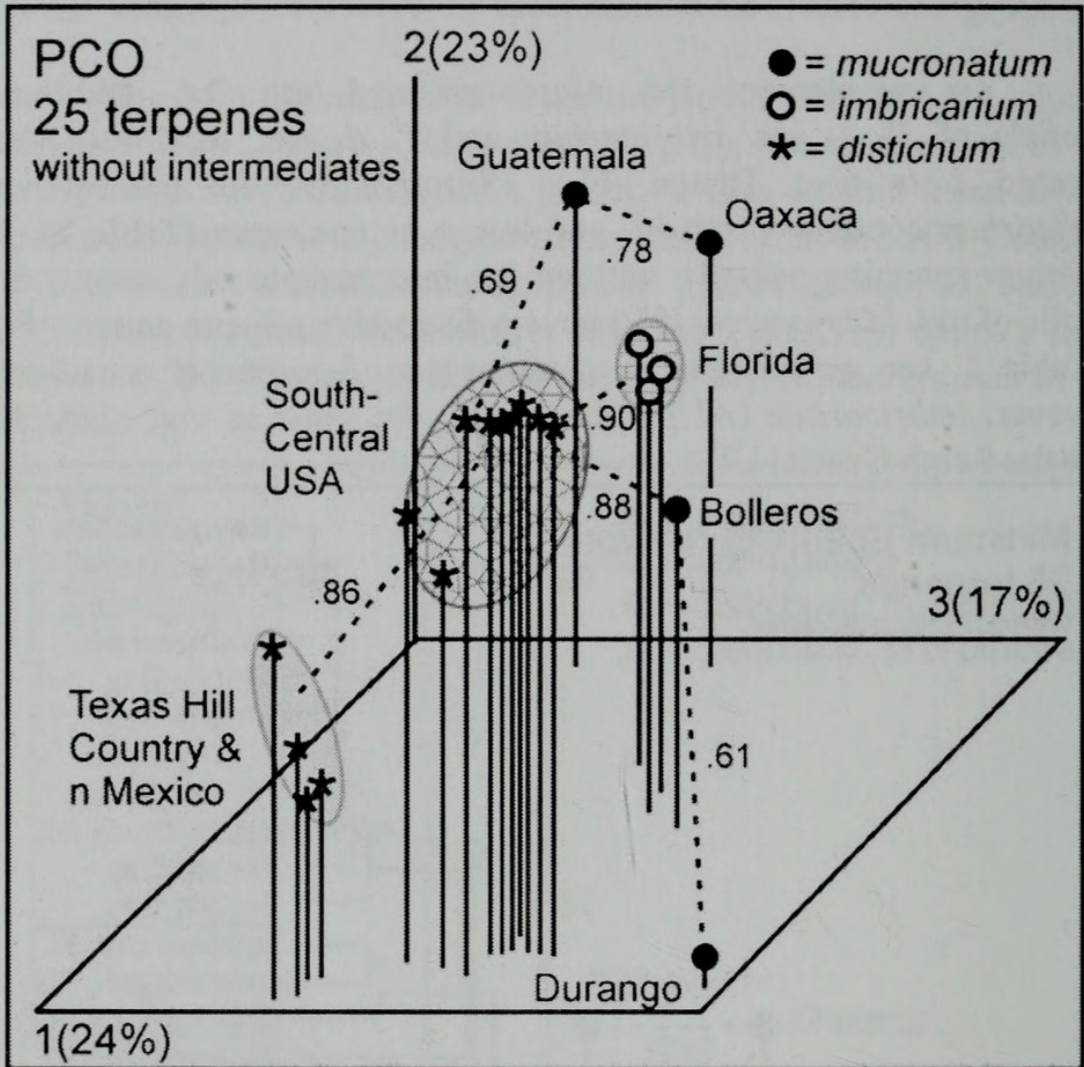


Figure 4. PCO of 22 OTUs based on 25 terpenes. Note the linkage of var. *imbricarium*, Florida with the South Central USA, var. *distichum* trees.

All of the trees analyzed in the Texas Hill Country-RGV-Rio Sabinas populations (20 trees) were very uniform and low in α -pinene, except one unusual individual at Rio Sabinas. However, all the Central South region populations contained mostly high α -pinene trees with one or two low α -pinene trees (Fig. 5). PCO of these individual *T. distichum* trees (Fig. 5) clearly separates low and high α -pinene trees (axis 1, 40%). Four low α -pinene individuals [Lake Cherokee (2), Bayou Teche (1), Mobile Bay (1)] cluster with typical Texas Hill Country - n Mexico trees (Fig. 5). No intermediate oil types are seen in

Fig. 5, suggesting that these individuals are not hybrids or introgressants, but more likely a chemical polymorphism. Additional sampling will be necessary to fully address this problem.

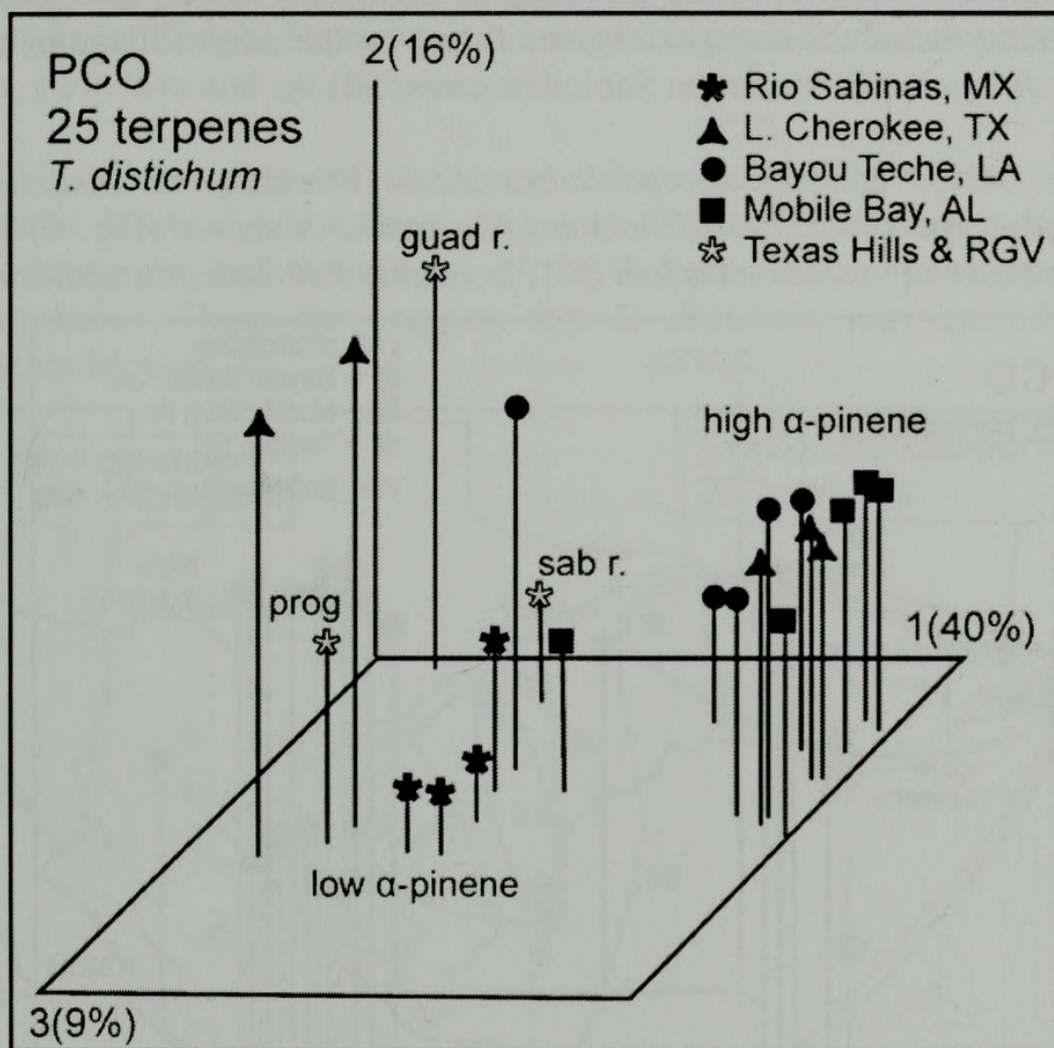


Fig. 5. PCO ordination of individuals of *T. distichum* based on 25 terpenes.

The *Taxodium* from near Tampa, Florida present an interesting problem. *Taxodium d.* var. *imbricarium* has adult foliage with imbricate leaves. Examination of trees on the edge of a swamp north of Tampa revealed that young trees first appear to produce alternate, lanceolate leaves, then produce adult, imbricate leaves. Many of the putative *T. d.* var. *distichum* trees, growing in the river rapids and at streamside on the Hillsborough River, had typical alternate, lanceolate leaves, but some trees had imbricate leaves. This heteroblastic change has also been observed during nursery production of *T. d.* var.

imbricarium seedlings. It appears that var. *distichum* and *T. mucronatum* are fixed in neoteny for the alternate, lanceolate leaves. This is similar to the situation in *Juniperus saxicola* Britt. and P. Wilson that is fixed for juvenile (whip or decurrent) leaves, as opposed to having the adult, scale-like leaves found on the adult foliage of the other *Juniperus* L. in section *Sabina* (Adams, 2011).

PCO analysis of var. *imbricarium* (Florida), var. *distichum* (Florida) and other var. *distichum* (AL and LA) shows (Fig. 6) the distinctness of var. *imbricarium* (FL) from var. *distichum*. In addition,

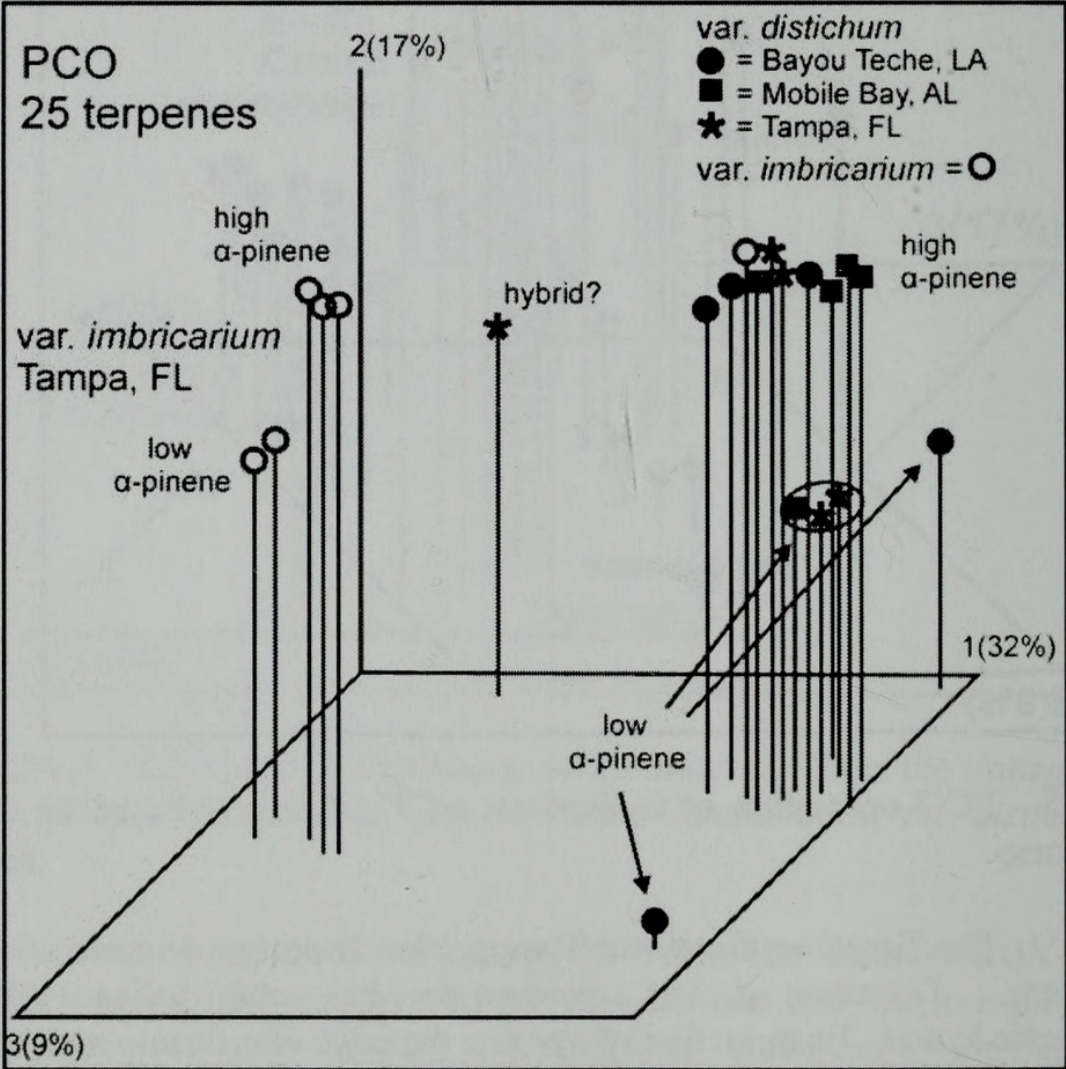


Figure 6. PCO of var. *imbricarium* (Florida) and var. *distichum* plants.

high/ low α -pinene var. *imbricarium* form a loose cluster, as do high/ low α -pinene var. *distichum* plants. Two trees from the Bayou TecheTeche population with low α -pinene are ordinated as outliers. These may be just trees with unusual oils. In addition, one of the var. *distichum*, Tampa, FL ordinated in a hybrid position midway between var. *distichum* and var. *imbricarium*.

Contouring the clustering order reveals (Fig. 7) the South Central USA, *T. distichum* group, the Texas Hill Country-northern Mexico group and the affinity of the Bolleros, MX population to *T. distichum*. These data suggest that *T. distichum* may extend into eastern Mexico.

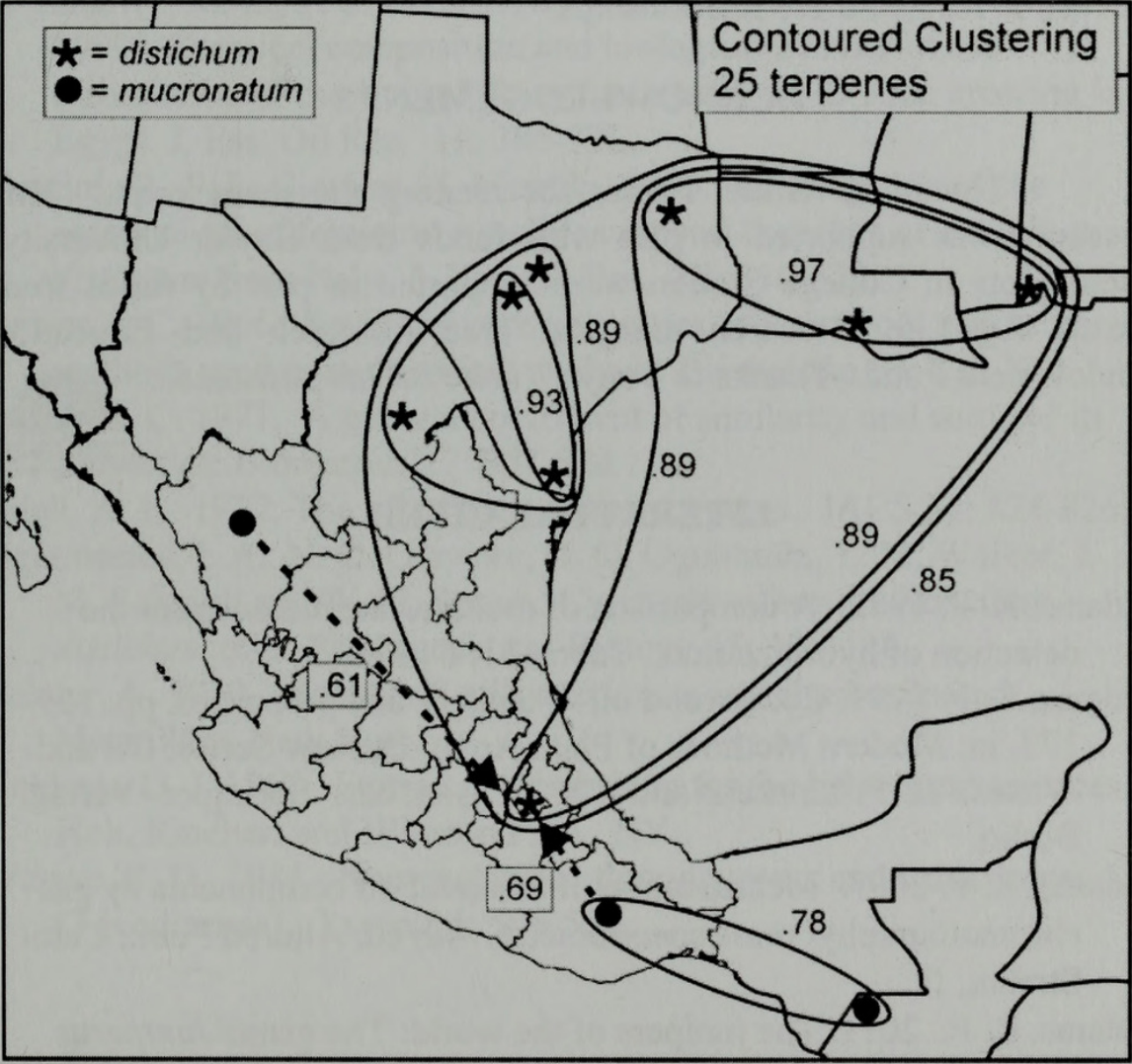


Figure 7. Contoured clustering based on 25 terpenes.

Of course, the Bolleros, MX population, with oils like var. *distichum* might have been derived from germplasm of var. *distichum* introduced from the USA (Fig. 7).

Based on analyses of the oils, it appears that *T. distichum* var. *distichum* from the South Central USA is distinct from var. *imbricarium* in Florida, but individuals with imbricate leaves from Fowl River, AL (cf. var. *imbricarium*) had oil patterns like var. *distichum*. *Taxodium d.* var. *distichum* appears to have 2 geographic chemical groups in the area studied: South Central USA and Texas Hill Country-northern Mexico (Fig. 7). Two types of oil patterns appear to be indigenous to Mexico: Durango and Oaxaca-Guatemala (Fig. 7). Additional research (in progress) using DNA sequencing will be needed to resolve these relationships.

ACKNOWLEDGEMENTS

Thanks to Billie Turner for reading the manuscript. This research was supported in part with funds from Baylor University. Field plots in College Station were supported in part by funds from Texas AgriLife Research and the Tree Research and Education Endowment Fund. Thanks to Tonya Yanke for lab assistance.



LITERATURE CITED

- Adams, R. P. 1982. A comparison of multivariate methods for the detection of hybridization. *Taxon* 31: 646-661.
- Adams, R. P. 1991. Cedarwood oil - Analysis and properties. pp. 159-173. in: *Modern Methods of Plant Analysis, New Series: Oil and Waxes*. H.-F. Linskens and J. F. Jackson, eds. Springer-Verlag, Berlin.
- Adams, R. P. 2007. Identification of essential oil components by gas chromatography/ mass spectrometry. 4th ed. Allured Publ., Carol Stream, IL.
- Adams, R. P. 2011. The junipers of the world: The genus *Juniperus*. 3rd ed. Trafford Publ., Victoria, BC.
- Britton, N. L. 1926. The swamp cypresses. *J. NY Bot. Gard.* 27: 205-207.

- Dallimore, W. and A. B. Jackson. 1966. Handbook of Coniferae and Ginkgoaceae, 4th ed., Arnold Press, London.
- Denny, G. C. 2007. Evaluation of selected provenances of *Taxodium distichum* for drought, alkalinity and salinity tolerance. Ph. D. Dissertation, Texas A & M University, College Station, TX
- Denny, G. C. and M.A. Arnold. 2007. Taxonomy and nomenclature of baldcypress and Montezuma cypress: one, two, or three species? HortTechnology 17:125-127.
- Eckenwalder, J. E. 2009. Conifers of the world. Timber Press, Portland, OR.
- Farjon, A. 2005. A monograph of Cupressaceae and Sciadopitys. Royal Botanic Gardens, Kew Press. London.
- El Tantawy, M. E., F. S. El Sakhawy, M. A. El Sohly and S. A. Ross. 1999. Chemical composition and biological activity of the essential oil of the fruit of *Taxodium distichum* L. Rich growing in Egypt. J. Ess. Oil Res. 11: 386-392.
- Flamini, G., P. L. Cioni and I. Morelli. 2000. Investigation of the essential oil of feminine cones, leaves and branches of *Taxodium distichum* from Italy. J. Ess. Oil Res. 12: 310-312.
- Gower, J. C. 1966. Some distance properties of latent root and vector methods used in multivariate analysis. Biometrika 53: 326-338.
- Gower, J. C. 1971. A general coefficient of similarity and some of its properties. Biometrics 27: 857-874
- Odell, A. F. 1912. The oil of the southern cypress. JACS 34: 824-826.
- Ogunwande, I. A., N. O. Olawore, O. O. Ogunmola, T. M. Walker, J. M. Schmidt and W. N. Setzer. Cytotoxic effects of *Taxodium distichum* oils. Pharmaceutical Biology 45: 106-110.
- Rehder, A. 1940. Manual of cultivated trees and shrubs, 2nd ed., Macmillan, New York.
- Veldman D. J. 1967. Fortran programming for the behavioral sciences. Holt, Rinehart and Winston Publ., NY.
- Watson, F. D. 1985. Nomenclature of pondcypress and baldcypress (Taxodiaceae). Taxon 34: 506-509.

Table 1. Leaf essential oil composition of populations of *Taxodium*. muc Dur = *mucronatum*, Durango, MX; muc Oax = *mucronatum*, Oaxaca, MX; muc Bol = *mucronatum*, Bolleros, MX; dist Guad = *distichum*, Guadalupe River, TX, dist Mob = *distichum*, Mobile Bay, AL, imb FL = var. *imbricarium*, Tampa, FL. Compounds in boldface appear to separate taxa and were used in numerical analyses. KI = Kovats Index (linear) on DB-5 column. Compositional values less than 0.1% are denoted as traces (t). Unidentified components less than 0.5% are not reported. For unknown compounds, four ions are listed, with the largest ion underlined.

| KI | compound | muc Dur | muc Oax | muc Boll | dist Guad | dist Mob | imb FL |
|-------------|--|-------------|-------------|-------------|-------------|-------------|-------------|
| 921 | tricyclene | 0.2 | 0.6 | 0.3 | t | 0.2 | 0.3 |
| 924 | α-thujene | 1.1 | - | - | 0.4 | t | - |
| 932 | α-pinene | 27.3 | 42.9 | 76.6 | 5.3 | 72.8 | 79.3 |
| 946 | camphene | 0.9 | 0.2 | 1.0 | t | 0.7 | 0.4 |
| 969 | sabinene | 16.9 | 0.4 | 0.2 | 1.9 | 0.2 | 0.3 |
| 974 | 1-octen-3-ol | - | - | - | - | - | 0.6 |
| 974 | β -pinene | 0.9 | 1.2 | 3.0 | 0.3 | 2.1 | 1.4 |
| 988 | myrcene | 3.8 | 2.2 | 4.2 | 3.9 | 3.0 | 2.3 |
| 1002 | α -phellandrene | 0.2 | t | t | t | t | t |
| 1014 | α-terpinene | 4.4 | t | 0.1 | 0.9 | t | 0.1 |
| 1020 | p-cymene | 0.5 | 1.2 | 1.9 | 0.1 | t | t |
| 1024 | limonene | 1.2 | 0.6 | 1.0 | t | 6.0 | 0.9 |
| 1025 | β-phellandrene | 1.2 | 0.6 | 0.9 | 61.5 | 5.0 | 0.6 |
| 1044 | (E)- β -ocimene | t | - | - | t | - | - |
| 1054 | γ-terpinene | 7.3 | 0.1 | 0.1 | 1.6 | 0.1 | 0.2 |
| 1065 | cis-sabinene hydrate | 0.3 | - | - | t | - | - |
| 1086 | terpinolene | 2.3 | 0.3 | 0.5 | 0.8 | 0.4 | 0.9 |
| 1098 | linalool | - | t | t | - | - | - |
| 1098 | trans-sabinene hydrate | 0.3 | - | - | t | - | - |
| 1100 | n-nonanal | - | - | - | t | - | - |
| 1102 | perrilene | t | - | - | - | - | - |
| 1114 | endo-fenchol | t | - | - | - | - | - |
| 1118 | cis-p-menth-2-en-1-ol | 0.9 | - | - | 0.2 | - | - |
| 1122 | α -campholenal | - | t | t | - | - | - |
| 1135 | trans-pinocarveol | - | t | t | - | - | t |
| 1136 | trans-p-menth-2-en-1-ol | 0.5 | - | - | 0.1 | - | - |
| 1141 | camphor | - | t | t | - | - | t |
| 1145 | camphene hydrate | - | t | t | - | - | t |

| KI | compound | muc Dur | muc Oax | muc Boll | dist Guad | dist Mob | imb FL |
|------|----------------------------|------------|------------|-------------|--------------|-------------|-----------|
| 1165 | borneol | t | 0.2 | 0.1 | - | - | - |
| 1166 | p-mentha-1,5-dien-8-ol | - | - | - | t | t | 0.1 |
| 1174 | terpinen-4-ol | 15.5 | 0.2 | 0.3 | 3.3 | 0.2 | 0.4 |
| 1186 | α -terpineol | 1.1 | 0.8 | 0.8 | 0.3 | 0.8 | 1.0 |
| 1195 | cis-piperitol | 0.2 | - | - | - | - | - |
| 1207 | trans-piperitol | 0.3 | - | - | t | - | - |
| 1215 | trans-carveol | - | - | - | t | - | - |
| 1287 | bornyl acetate | - | 1.7 | 1.2 | 0.1 | 0.6 | 0.4 |
| 1298 | trans-pinocarvyl acetate | 0.1 | 0.2 | 0.2 | t | 0.1 | t |
| 1324 | myrtenyl acetate | - | - | - | - | t | 0.1 |
| 1339 | trans-carvyl acetate | - | - | - | 0.2 | t | - |
| 1345 | α -cubebene | - | t | t | - | - | - |
| 1346 | α -terpinyl acetate | t | - | - | - | - | - |
| 1373 | α -ylangene | - | t | - | - | - | - |
| 1374 | α -copaene | - | t | - | - | - | - |
| 1387 | β -bourbonene | - | 0.1 | t | - | - | - |
| 1390 | β -elemene | - | 0.2 | t | - | - | - |
| 1396 | duvalene acetate | t | - | - | 0.2 | 0.2 | t |
| 1410 | α -cedrene | t | - | - | t | - | - |
| 1419 | β -cedrene | 0.1 | 0.2 | 0.1 | t | - | - |
| 1417 | (E)-caryophyllene | - | 1.6 | 0.2 | 0.9 | 0.9 | 1.0 |
| 1429 | cis-thujopsene | 3.3 | 6.9 | 3.2 | 1.7 | - | - |
| 1452 | α -humulene | - | 0.3 | t | 0.1 | 0.1 | 0.2 |
| 1476 | β -chamigrene | 0.2 | - | - | t | - | - |
| 1478 | γ -muurolene | - | 1.2 | 0.2 | - | - | 0.1 |
| 1480 | germacrene D | 0.2 | 0.8 | - | - | - | 4.0 |
| 1495 | γ -amorphene | - | 0.3 | - | | - | - |
| 1500 | α -muurolene | - | 0.8 | 0.3 | | - | 0.1 |
| 1500 | β -himachalene | 0.3 | - | - | 0.1 | - | - |
| 1502 | α -chamigrene | 0.1 | - | - | - | - | - |
| 1504 | cuparene | 0.2 | 0.4 | 0.2 | 0.2 | - | - |
| 1505 | β -bisabolene | - | t | - | - | - | - |
| 1512 | α -alaskene | t | - | - | - | - | - |
| 1513 | γ -cadinene | - | 0.8 | t | - | - | 0.1 |
| 1522 | δ -cadinene | t | 1.9 | t | - | - | 0.5 |
| 1532 | γ -cuparene | 0.2 | - | - | t | - | - |
| 1533 | trans-cadina-1,4-diene | - | 0.4 | t | t | - | - |
| 1537 | α -cadinene | - | 0.1 | - | - | - | - |
| 1542 | δ -cuparene | t | - | - | t | - | - |

| KI | compound | muc Dur | muc Oax | muc Boll | dist Guad | dist Mob | imb FL |
|-------------|--|------------|------------|-------------|--------------|-------------|------------|
| 1550 | occidenol | - | 0.2 | - | - | - | - |
| 1561 | (E)-nerolidol | t | - | - | 0.1 | - | - |
| 1562 | β -calacorene | - | t | - | - | - | - |
| 1574 | germacrene D-4-ol | - | - | - | - | - | t |
| 1582 | caryophyllene oxide | 0.2 | 1.1 | 0.3 | 7.3 | 3.6 | 0.2 |
| 1589 | allo-cedrol | 0.1 | - | - | 0.2 | - | - |
| 1599 | widdrol | 2.0 | 0.6 | 0.7 | 1.2 | - | - |
| 1600 | cedrol | 0.8 | 1.2 | 1.5 | 1.3 | - | - |
| 1607 | β -oplopenone | 0.1 | - | - | - | - | - |
| 1608 | humulene epoxide II | - | 0.1 | t | 0.8 | - | - |
| 1618 | junenol | - | - | - | - | - | t |
| 1638 | epi- α -cadinol | - | 0.5 | - | - | - | 0.2 |
| 1638 | epi- α -muurolol | - | 0.5 | - | - | - | 0.2 |
| 1639 | caryophylla-4(12),8(13)-dien-5-α-ol | - | - | - | 0.6 | 0.3 | 0.3 |
| 1644 | α -muurolol | - | 0.3 | - | - | - | 0.1 |
| 1649 | β -eudesmol | - | 0.2 | - | - | - | - |
| 1652 | α-cadinol | 0.3 | 2.0 | t | - | - | 1.0 |
| 1653 | 3-thujopsenone | - | - | - | 0.3 | - | - |
| 1662 | 43,79,187,220 | - | - | - | 0.6 | 0.2 | 0.3 |
| 1674 | 43,79,187,220 | - | - | - | 0.6 | 0.3 | 0.4 |
| 1683 | epi-α-bisabolol | 0.4 | 0.4 | 0.3 | 0.4 | - | - |
| 1685 | germacra-4(15),5,10(14)-trien-1-al | 0.1 | 0.6 | - | - | - | 0.6 |
| 1905 | isopimara-9(11),15-diene | 0.1 | - | - | 0.2 | 0.1 | 0.2 |
| 1959 | hexadecanoic acid | - | 1.7 | 0.2 | - | - | - |
| 1978 | manoyl oxide | t | - | 0.1 | 0.3 | - | t |
| 2055 | abietatriene | t | 0.3 | 0.1 | 0.2 | t | t |
| 2056 | manool | - | 0.2 | - | - | - | - |
| 2087 | abietadiene | t | - | - | - | - | - |
| 2132 | linoleic acid | - | 1.7 | - | - | - | - |
| 2184 | sandaracopimarinol | - | t | - | - | - | - |
| 2231 | diterpene, 41,81,273,318 | - | 0.7 | - | - | - | - |
| 2268 | diterpene, 41,81,273,318, iso. | - | 0.8 | - | - | - | - |
| 2329 | 6,7-dehydro-ferruginol | - | 1.1 | t | t | t | t |
| 2331 | trans-ferruginol | - | 7.5 | 0.1 | t | 0.2 | 0.3 |
| 2350 | diterpene acid,41,55,301,316 | - | 1.4 | - | - | - | - |
| 2365 | communic acid | - | 0.4 | - | - | - | - |

Table 2. Leaf essential oil composition plants with high/low amounts of α -pinene /low/high limonene- β -phellandrene (LMNN/BPHL). dist Prog = *distichum*, Progresso, TX, dist Guad = *distichum*, Guadalupe R., Mob hi LI = Mobile Bay, high LMNN/BPHL, Mob hi AP = Mobile Bay, high α -pinene, imb hi AP = *imbricarium* (FL), high α -pinene, imb hi LI = *imbricarium* (FL)/, high LMNN/BPHL.

| KI | compound | dist Prog | dist Guad | Mob hi LI | Mob hi AP | imb hi AP | imb hi LI |
|------|--------------------------|--------------|--------------|--------------|--------------|--------------|--------------|
| 921 | tricyclene | t | t | 0.1 | 0.2 | 0.3 | 0.1 |
| 924 | α -thujene | 0.3 | 0.4 | t | t | - | t |
| 932 | α -pinene | 5.1 | 5.3 | 25.6 | 72.8 | 79.3 | 51.0 |
| 946 | camphene | t | t | 0.4 | 0.7 | 0.4 | 0.3 |
| 969 | sabinene | 1.4 | 1.9 | 0.4 | 0.2 | 0.3 | 0.2 |
| 974 | β -pinene | 0.2 | 0.3 | 1.2 | 2.1 | 1.4 | 1.8 |
| 988 | myrcene | 3.4 | 3.9 | 2.8 | 3.0 | 2.3 | 3.8 |
| 1002 | α -phellandrene | t | t | t | t | t | t |
| 1014 | α -terpinene | 0.2 | 0.9 | 0.1 | t | 0.1 | 0.1 |
| 1020 | p-cymene | t | 0.1 | t | t | t | t |
| 1024 | limonene | t | t | 29.0 | 6.0 | 0.9 | 11.0 |
| 1025 | β -phellandrene | 78.2 | 61.5 | 28.7 | 5.0 | 0.6 | 10.0 |
| 1054 | γ -terpinene | 1.2 | 1.6 | 0.3 | 0.1 | 0.2 | 0.2 |
| 1086 | terpinolene | 0.6 | 0.8 | 0.4 | 0.4 | 0.9 | 0.9 |
| 1118 | cis-p-menth-2-en-1-ol | t | 0.2 | - | - | - | - |
| 1174 | terpinen-4-ol | 2.6 | 3.3 | 0.5 | 0.2 | 0.4 | 0.3 |
| 1186 | α -terpineol | 0.3 | 0.3 | 0.5 | 0.8 | 1.0 | 1.0 |
| 1287 | bornyl acetate | 0.3 | 0.1 | 0.8 | 0.6 | 0.4 | 0.4 |
| 1298 | trans-pinocarvyl acetate | t | t | t | 0.1 | t | t |
| 1396 | duvalene acetate | 0.1 | 0.2 | 0.3 | 0.2 | t | t |
| 1417 | (E)-caryophyllene | 0.3 | 0.9 | 0.6 | 0.9 | 1.0 | 0.2 |
| 1429 | cis-thujopsene | t | 1.7 | - | - | - | - |
| 1452 | α -humulene | t | 0.1 | t | 0.1 | 0.2 | 0.2 |
| 1478 | γ -muurolene | - | - | - | - | 0.1 | 0.4 |
| 1480 | germacrene D | - | - | - | - | 4.0 | 4.5 |
| 1500 | α -muurolene | - | - | - | - | 0.1 | 0.2 |
| 1504 | cuparene | - | 0.2 | - | - | - | - |
| 1513 | γ -cadinene | - | - | - | - | 0.1 | 0.3 |
| 1522 | δ -cadinene | - | - | - | - | 0.5 | 0.9 |
| 1574 | germacrene D-4-ol | - | - | - | - | t | 0.2 |
| 1582 | caryophyllene oxide | 2.5 | 7.3 | 3.6 | 3.6 | 0.2 | t |
| 1589 | allo-cedrol | - | 0.2 | - | - | - | - |

| KI | compound | dist Prog | dist Guad | Mob hi LI | Mob hi AP | imb hi AP | imb hi LI |
|------|--|--------------|--------------|--------------|--------------|--------------|--------------|
| 1599 | widdrol | t | 1.2 | - | - | - | - |
| 1600 | cedrol | t | 1.3 | - | - | - | - |
| 1608 | humulene epoxide II | 0.3 | 0.8 | - | - | - | - |
| 1638 | epi- α -cadinol | - | - | - | - | 0.2 | 0.5 |
| 1638 | epi- α -muurolol | - | - | - | - | 0.2 | 0.4 |
| 1639 | caryophylla-4(12),8(13)-dien-5- α -ol | t | 0.6 | 0.3 | 0.3 | 0.3 | - |
| 1644 | α -muurolol | - | - | - | - | 0.1 | 0.2 |
| 1652 | α -cadinol | - | - | - | - | 1.0 | 2.3 |
| 1653 | 3-thujopsenone | t | 0.3 | - | - | - | - |
| 1662 | 43,79,187,220 | t | 0.6 | 0.2 | 0.2 | 0.3 | - |
| 1674 | 43,79,187,220 | t | 0.6 | 0.3 | 0.3 | 0.4 | - |
| 1683 | epi- α -bisabolol | - | 0.4 | - | - | - | - |
| 1685 | germacra-4(15),5,10(14)-trien-1-al | - | - | - | - | 0.6 | 1.1 |
| 1789 | 1-octadecene | t | t | 0.2 | t | - | - |
| 1905 | isopimara-9(11),15-diene | 0.2 | 0.2 | 0.2 | 0.1 | 0.2 | t |
| 1978 | manoyl oxide | 0.2 | 0.3 | - | - | t | - |
| 2055 | abietatriene | 0.1 | 0.2 | t | t | t | - |
| 2105 | isoabienol | - | - | - | - | - | 1.0 |
| 2184 | sandaracopirmaryl | - | - | - | - | - | 0.5 |
| 2329 | 6,7-dehydro-ferruginol | t | t | 0.2 | t | t | t |
| 2331 | trans-ferruginol | t | t | 0.3 | 0.2 | 0.3 | 1.7 |



Adams, Robert P. et al. 2012. "Geographic variation in the leaf essential oils of *Taxodium* (Cupressaceae p." *Phytologia* 94, 53–70.

View This Item Online: <https://www.biodiversitylibrary.org/item/181560>

Permalink: <https://www.biodiversitylibrary.org/partpdf/184439>

Holding Institution

Harvard University Botany Libraries

Sponsored by

BHL-SIL-FEDLINK

Copyright & Reuse

Copyright Status: In copyright. Digitized with the permission of the rights holder.

Rights Holder: Phytologia

License: <http://creativecommons.org/licenses/by-nc-sa/3.0/>

Rights: <https://biodiversitylibrary.org/permissions>

This document was created from content at the **Biodiversity Heritage Library**, the world's largest open access digital library for biodiversity literature and archives. Visit BHL at <https://www.biodiversitylibrary.org>.