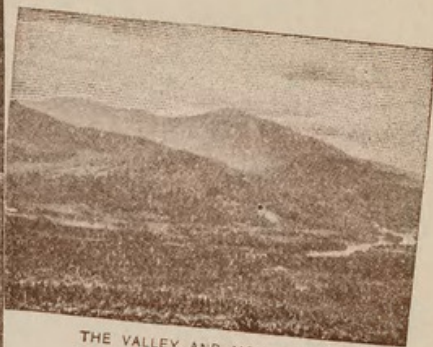




THE INTERVALLE FROM THE
PINE GROVE



PHILBROOK FARM



THE VALLEY AND MOUNTAINS
FROM CABOT

SHELBURNE, N. H.

June 13² 1910

My dear Mr. Deane

Please accept my appreciative
thanks for your two letters and the vor-
ious publications which are of much
interest. We have been trying hard
for the last week to keep out of the
rain, but have found it very difficult
until today when a compromise
in rain and sunshine enabled us
to go to Bowls & Pitches - a delightful
walk varied by an abundance of winter-
green berries as large as marbles, a fine
collection of Cyprinodon aculeatus and
shades of color and a beautiful deer
which stood at gaze for some moments

and seemed in no hurry to get out of
the way. He expects Mrs. Lincoln
and the two children ^{very} soon. We shall
be delighted to see you and
Mrs. Deane in Shelburne.

Mrs. Burhollow joins with me in
warm regards to you both

Truly yours

W. V. Burhollow



Penhallow, D. P. 1910. "Penhallow, David Pearce Jun. 13, 1910." *Walter Deane correspondence*

View This Item Online: <https://www.biodiversitylibrary.org/item/252349>

Permalink: <https://www.biodiversitylibrary.org/partpdf/269983>

Holding Institution

Harvard University Botany Libraries

Sponsored by

IMLS

Copyright & Reuse

Copyright Status: Public domain. The BHL considers that this work is no longer under copyright protection.

This document was created from content at the **Biodiversity Heritage Library**, the world's largest open access digital library for biodiversity literature and archives. Visit BHL at <https://www.biodiversitylibrary.org>.