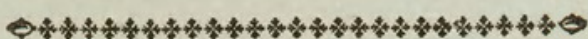


# CHAMA GIGAS.



## CHARACTER GENERICUS.

*Animal* Tethys.

*Testa* bivalvis, grossior.

*Cardo* callo gibbo, oblique inserto fossulæ obliquæ.

## CHARACTER SPECIFICUS, &c.

CHAMA testa oblonga, plicata fornicato-squamosa.

CHAMA squamata.

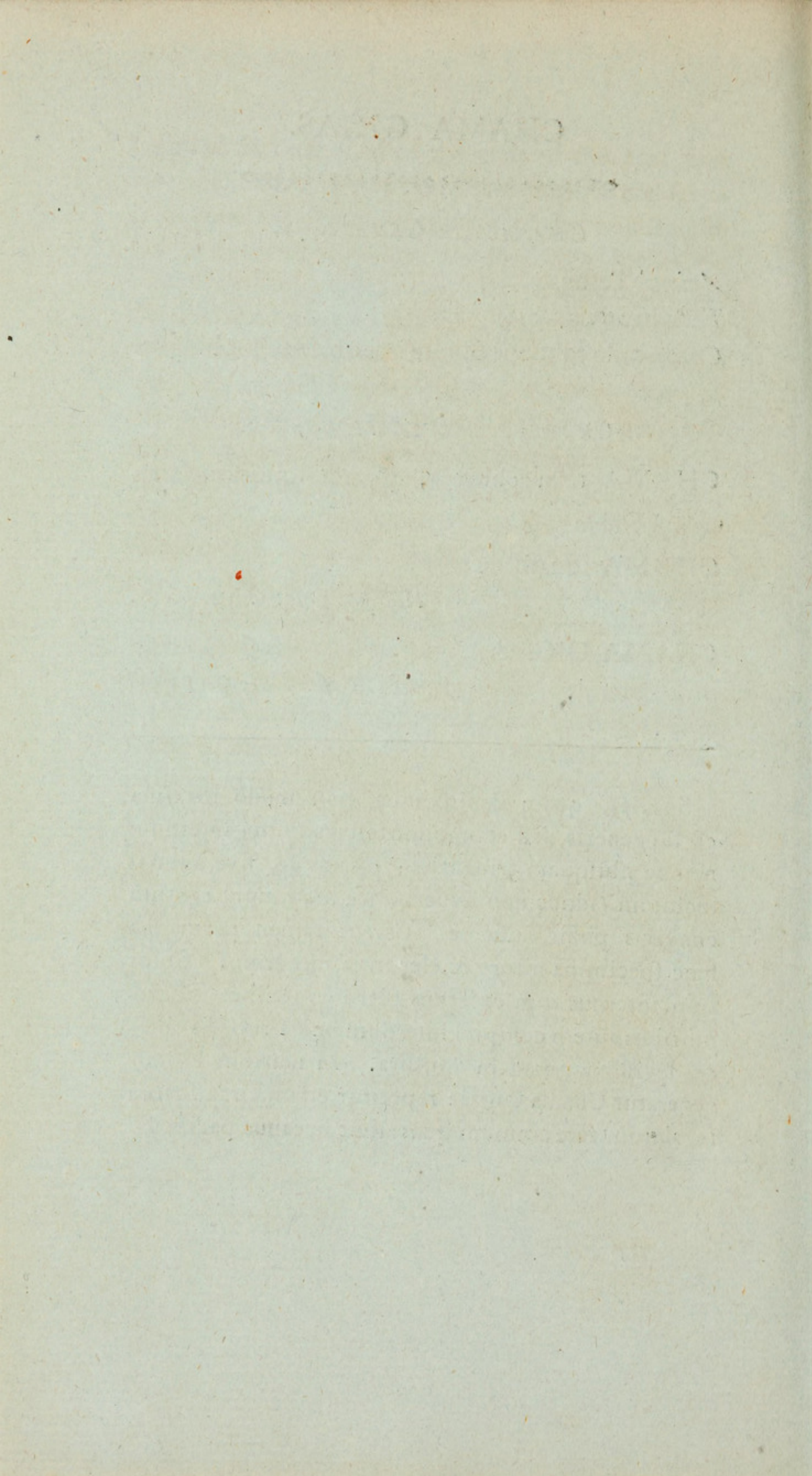
*Rumph. mus.* t. 42. A. B.

CHAMA GIGAS,

*Lin. Syst. Nat.* p. 1137.

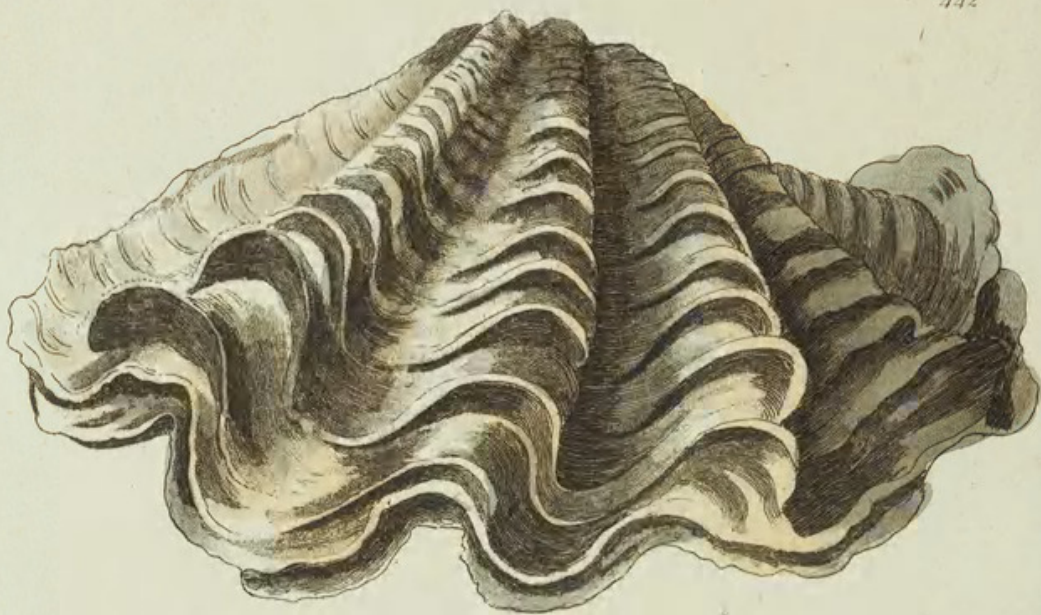
---

Species, quam depinximus, non modo maxima est sui generis, sed et omnium testaceorum; interdum nempe plusquam tripedalis; ostreaque, sive animal inclusum (idque non hyperbolice loquimur) centum convivis possit sufficere. Carent tamen permagna hæc specimina nitore & elegantia minorum. Color tum internus tum externus plerumque albet. In junioribus autem conspici interdum possit ruboris rosei levissima quædam mistura. In maribus Indicis generatur Chama Gigas: reperitur etiam circa littora insularum fere omnium quas alluit oceanus pacificus.









A.N.

London Published August 1<sup>st</sup> 1800 by T. B. Nodder, Newman Street.



THE  
GREAT CHAMA.



GENERIC CHARACTER.

*Animal* resembling a Tethys.

*Shell* bivalve, thick.

*Hinge* furnished with a gibbous callus obliquely  
inserted into an oblique fossule.

SPECIFIC CHARACTER, &c.

Great whitish oblong plaited CHAMA, with  
arched scales.

The GREAT CHAMA, or Giant Clamp.

---

The shell represented on the plate is not only the largest of the genus to which it belongs, but of the whole testaceous tribe, having been sometimes seen of the length of more than three feet, with the included animal sufficient to afford a meal for upwards of an hundred persons. These large specimens however are by far less regular and beautiful than the smaller ones. The color is commonly white, both internally and externally; but, when young, a slight tinge of rose-color is sometimes visible. It is a native of the Indian seas, and is met with on the shores of most of the islands in the great southern or pacific ocean.



Shaw, George. 1800. "The Great Chama, Chama gigas [Pl. 442]." *The Naturalist's Miscellany* 11(CXXXII), <https://doi.org/10.5962/p.310889>.

**View This Item Online:** <https://www.biodiversitylibrary.org/item/276496>

**DOI:** <https://doi.org/10.5962/p.310889>

**Permalink:** <https://www.biodiversitylibrary.org/partpdf/310889>

**Holding Institution**

Museums Victoria

**Sponsored by**

Atlas of Living Australia

**Copyright & Reuse**

Copyright Status: Public domain. The BHL considers that this work is no longer under copyright protection.

This document was created from content at the **Biodiversity Heritage Library**, the world's largest open access digital library for biodiversity literature and archives. Visit BHL at <https://www.biodiversitylibrary.org>.