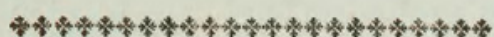


CANCER SCYLLARUS.



CHARACTER GENERICUS.

Pedes octo (rarius sex aut decem;) insuper
manus duæ chelatæ.

Oculi duo, distantes, plurimis pedunculati;
elongati, mobiles.

Cauda articulata, inermis.

CHARACTER SPECIFICUS, &c.

CANCER macrourus articularis, manibus adac-
tylis, ventricosis rectis angulatis introrsum
tridentatis.

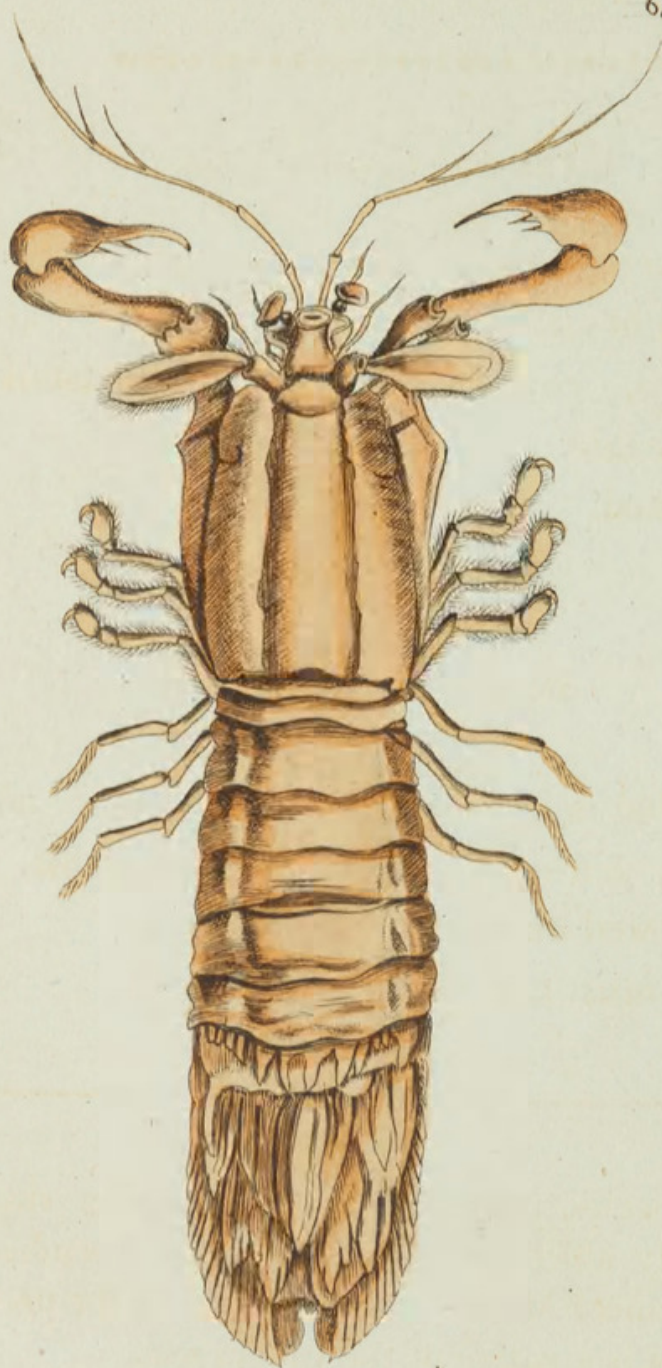
Lin. Syst. Nat. p. 1054.

SQUILLA arenaria.

Seb. mus. 3. t. 20. f. 6.

Cancro *Manti*, quem in opere hoc nostro non
ita pridem repræsentavimus, licet longe minor sit
Cancer Scyllarus, in aliis tamen conjungi videtur
cum eo propinqua cognatione. In maribus enutri-
tur Indicis,

626



RPN

THE
OVAL-TAILED CRAB.



GENERIC CHARACTER.

Legs generally eight, (in some species six or ten,) besides two claspers or chelated arms.

Eyes two, commonly distant; footstalked, moveable.

Tail jointed.

SPECIFIC CHARACTER, &c.

Long-tailed many-jointed CRAB, with adactyle, ventricose, strait, angular arms, tridentated on the inner side.

Rumph. mus. t. 3. f. F.

This species, though of much smaller size, is very nearly allied in point of general resemblance to the Cancer Mantis lately figured in the present work, and is a native of the Indian seas.



Shaw, George. 1805. "The Oval-Tailed Crab, *Cancer scyllarus* [Pl. 655]." *The Naturalist's Miscellany* 16(CLXXXVI), <https://doi.org/10.5962/p.311096>.

View This Item Online: <https://www.biodiversitylibrary.org/item/281942>

DOI: <https://doi.org/10.5962/p.311096>

Permalink: <https://www.biodiversitylibrary.org/partpdf/311096>

Holding Institution

Museums Victoria

Sponsored by

Atlas of Living Australia

Copyright & Reuse

Copyright Status: Public domain. The BHL considers that this work is no longer under copyright protection.

This document was created from content at the **Biodiversity Heritage Library**, the world's largest open access digital library for biodiversity literature and archives. Visit BHL at <https://www.biodiversitylibrary.org>.