

A REVISION OF THE FUR MITES MYOBIIDAE (ACARINA) (SUITE).

By Charles D. RADFORD, Hon. D. Sc., F. Z. S.

(MEMBRE CORRESPONDANT DU MUSÉUM D'HISTOIRE NATURELLE, PARIS)

**Radfordia lancearia** (Poppe, 1908)

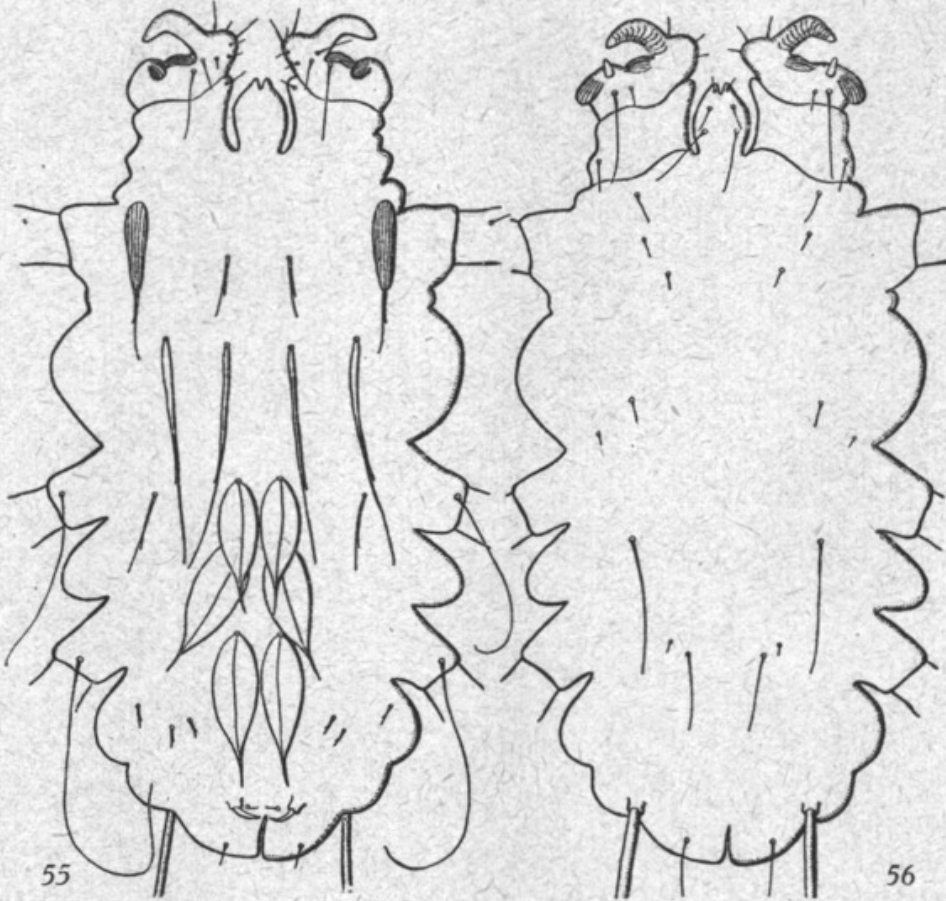
*Myobia lancearia* Poppe, 1908 in Fahrenholz (1908) *Abh. nat. Ver. Bremen*. 19 : 3, 367.

The male dorsum has lateral spines I midway between coxae I and II, extending beyond bases of lateral spines II ; lateral spines II longer, placed close to posterior edge of coxae II, extending beyond posterior edge of coxae III, closer to median line of body ; lateral spines III level with coxae III, almost twice the length of lateral spines I, extending to coxae IV, Sub-median spines I level with coxae II, reaching beyond bases of lateral spines II ; sub-median spines II between coxae II and III, much smaller than preceding spines ; sub-median spines III level with coxae III, similar to preceding spines. Posterior to coxae IV is a row of four spines ; on the posterior edge of the body are two small spines anterior to the terminal bristles. Genital pore placed between sub-median spines II and III. Penis long tapering, extending from coxae IV to the genital pore.

The female dorsum (fig. 55) has lateral spines I very broad at base, almost leaf like, with a long, slender tip, two-jointed, extending from anterior of coxae II to midway between coxae II and III ; lateral spines II posterior to coxae II, long, slender, two-jointed, extending to midway between coxae III and IV ; lateral spines III level with middle of coxae III, short, slender, two-jointed ; only the first pair of these spines is striated. Sub-median spines I almost level with posterior edge of coxae II, short, two-jointed ; sub-median spines II almost level with lateral spines II, sub-similar ; sub-median spines III, IV and V broadly leaf-like ; sub-median spines III level with middle of coxae III ; sub-median spines IV posterior to coxae III ; sub-median spines V level with middle of coxae IV. Posterior to coxae IV are three pairs of small, two-jointed spines. Genital pore level with terminal bristles, flanked laterally by the genital claws. Anterior to the pore are six small spines with a pair of spines on the caudal lobe,

The female venter (fig. 56) has three pairs of spines on the capitulum ; two pairs of spines anterior to coxae II ; two pairs of spines level with coxae II ; a pair of small spines on lateral edge of body posterior to coxae II ; two pairs of spines anterior to coxae III ;

a pair of long spines posterior to coxae III ; level with coxae IV are two pairs of spines, the lateral pair being the shorter. Level with the terminal bristles are two pairs of spines with a pair of long spines close to posterior edge of body. Tarsus II with two claws ; tarsus III and IV each with one claw.



*Radfordia lancearia* (Poppe, 1908).  
FIG. 55, ♀ dorsum. — FIG. 56, ♀ venter.

Type host : Wood mouse (*Apodemus sylvaticus* L.).

Type locality : ? Common on the type host throughout its range.

Measurements : ♂ 0.27 mm × 0.15 mm ; ♀ 0.37 mm × 0.17 mm.

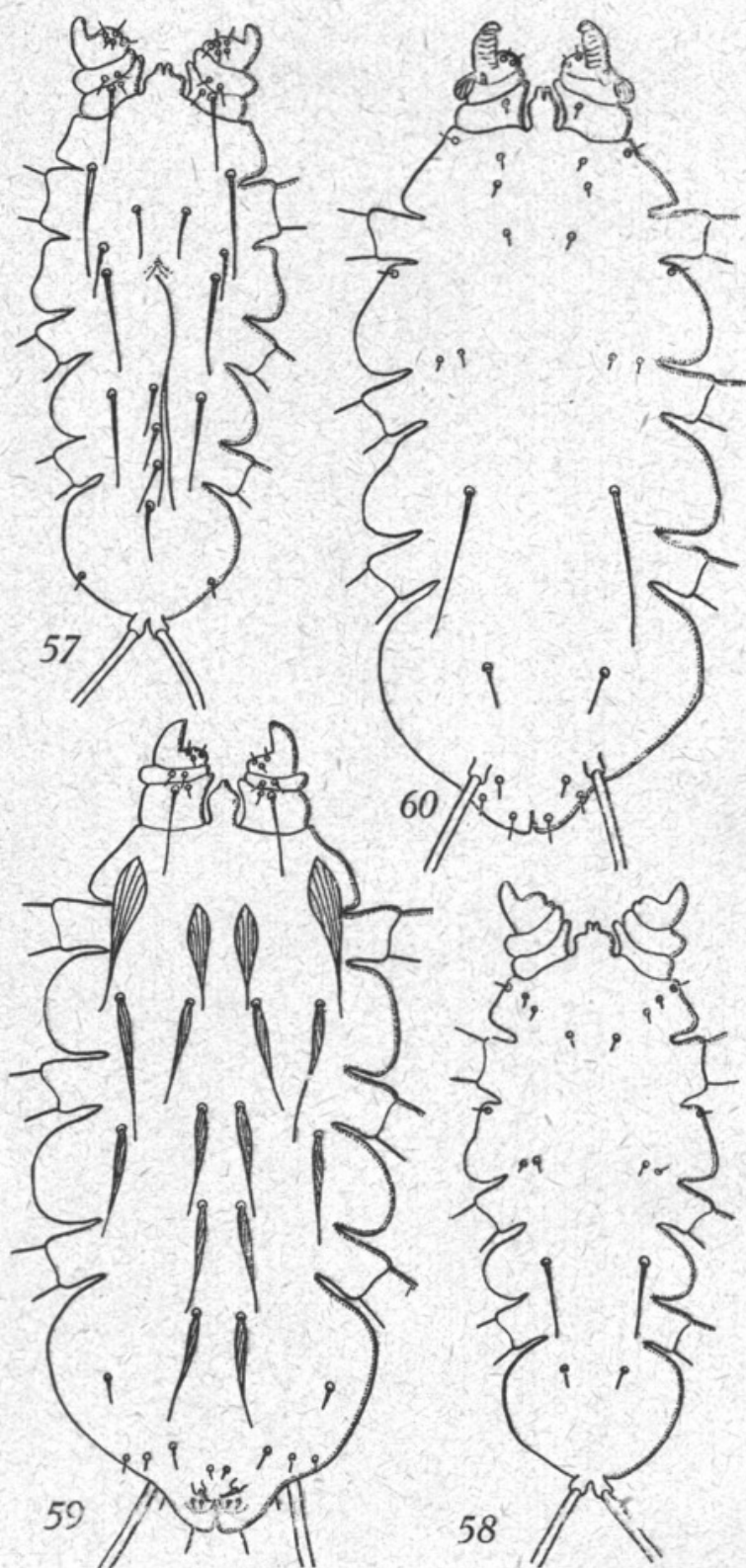
Nymph 0.312 mm × 0.177 mm. (Fahrenholz, 1908, p. 367).

***Radfordia oudemansi* (Poppe, 1908).**

*Myobia oudemansi* Poppe, 1908 in Fahrenholz (1908) *Abh. nat. Ver. Bremen*, :19 3, 360.

The male dorsum (fig. 57) has lateral spines I anterior to coxae II, two-jointed, not foliate, extending to the genital pore ; lateral spines





*Radfordia oudemansi* (Poppe, 1908).

FIG. 57, ♂ dorsum. — FIG. 58, ♂ venter. — FIG. 59, ♀ dorsum. — FIG. 60, ♀ venter

II anterior to genital pore, two-jointed, extending to posterior edge of coxae III; lateral spines III level with coxae III, two-jointed, extending to coxae IV; lateral spines IV, almost on posterior edge of body. Sub-median spines I level with anterior edge of coxae II, two-jointed, extending to genital pore. Anterior to lateral spines II is a pair of accessory spines. Median spine I level with coxae III, long, simple; median spine II lying between coxae III and IV; median spine III level with coxae IV; median spine IV between coxae IV and lateral spines IV, its free, distal end level with these spines. Genital pore midway between coxae II and III. Penis extending from level of lateral spines IV reaching forwards to the pore.

The male venter (fig. 58) has three pairs of spines anterior to coxae II; a pair of spines at lateral edge of body posterior to coxae II; anterior to coxae III are two pairs of spines; midway between coxae III and IV is a pair of long spines; anterior to coxae IV is a pair of spines. Tarsus II, III and IV each with one claw.

The female dorsum (fig. 59) has lateral spines I anterior to coxae II, broadly foliate at base, with long tapering ends, striated, reaching to midway between coxae II and III; lateral spines II lying between coxae II and III, narrower than preceding pair, extending beyond posterior edge of coxae III; lateral spines III posterior to coxae III, shorter than preceding pair of spines; lateral spines IV and V short, simple, anterior to terminal bristles. Sub-median spines I level with anterior edge of coxae II, foliate, striated; sub-median spines II level with lateral spines II, stout, peg-like, reaching posterior edge of coxae III; sub-median spines III level with posterior edge of coxae III, extending to anterior edge of coxae IV; anterior to coxae IV lies sub-median spines IV; sub-median spines V lying posterior to coxae IV. Genital pore level with bases of terminal bristles and, in addition to the paired genital claws, has three pairs of small spines. Anterior to the pore is a transverse row of four spines; there is a pair of spines on the posterior tip of the body.

The female venter (fig. 60) has three pairs of small spines anterior to coxae II; a pair of small spines between coxae II; posterior to coxae II is a pair of spines on lateral edge of body; anterior to coxae III are two pairs of spines; midway between coxae III and IV is a pair of very long spines; midway between coxae IV and terminal bristles is a pair of spines. Between terminal bristles and posterior tip of body are three pairs of spines. Tarsus II, III and IV each bears one long claw.

Type host : Dormouse (*Muscardinus avellanarius* L.)

Type locality : Oppendorf, Holstein, Germany.

Measurements : ♂ 0.33 mm × 0.16 mm ; ♀ 0.4 mm × 0.2 mm.

(*A suivre.*)



Radford, Charles D. 1950. "A revision of the fur Mites Myobiidæ (Acarina) (suite)." *Bulletin du Muse*

*um national d'histoire naturelle* 22(3), 360–363.

**View This Item Online:** <https://www.biodiversitylibrary.org/item/237339>

**Permalink:** <https://www.biodiversitylibrary.org/partpdf/330378>

#### **Holding Institution**

Muséum national d'Histoire naturelle

#### **Sponsored by**

Muséum national d'Histoire naturelle

#### **Copyright & Reuse**

Copyright Status: In copyright. Digitized with the permission of the rights holder.

Rights Holder: Muséum national d'Histoire naturelle

License: <http://creativecommons.org/licenses/by-nc-sa/4.0/>

Rights: <https://biodiversitylibrary.org/permissions>

This document was created from content at the **Biodiversity Heritage Library**, the world's largest open access digital library for biodiversity literature and archives. Visit BHL at <https://www.biodiversitylibrary.org>.