

1160 W. Orange Grove Ave., Arcadia, California 91006, U.S.A.

© Copyright 1975

HABITAT: *PIERIS OCCIDENTALIS NELSONI* (PIERIDAE)

ARTHUR M. SHAPIRO

Department of Zoology, University of California, Davis, California 95616

NELSON'S WHITE, *Pieris occidentalis nelsoni* W. H. Edwards, is the Alaskan subspecies of the widespread Western White and appears to represent a phenotypic transition to the Palearctic taxon *P. callidice* Hübner, whose range has recently been extended to northeastern Siberia (K. Philip, *pers. comm.*). Like Californian *P. o. occidentalis* Reakirt and lowland *P. protodice* Boisduval and LeConte, *P. o. nelsoni* is preadapted to the highly disturbed habitats created by man (compare Shapiro 1975a,b,c). The photographs offer two views of the east end of the railroad yard complex at Fairbanks, Alaska, where *P. o. nelsoni* was found commonly in July 1974. The highly disturbed sandy soil supports a large stand of the weed annual Crucifer *Lepidium densiflorum* Schrad. var. *bourgeauanum* (Thell.) C. L. Hitchc. on which the butterfly was breeding. Larvae of *Euchloe ausonides* Lucas were also found here on this plant. *Pieris napi* L. occurred in the nearby forest and occasionally ventured into the railroad yard, but did not appear to be breeding there. Other butterflies found in the railroad yard were *Colias gigantea* Strecker, *C. philodice* Latreille, *Lycaena helloides/dorcas* complex, *Plebeius saepiolus* Boisduval, and *Limenitis arthemis* Drury.

LITERATURE CITED

- SHAPIRO, A. M. 1975a. Ecological and behavioral aspects of coexistence in six Crucifer-feeding Pierid butterflies in the central Sierra Nevada. *American Midland Naturalist* 93: 424-433.
- 1975b. Habitat: *Pieris occidentalis* (Pieridae). *J. Res. Lepid.*
- 1975c. Notes on the biology of a "weedy" butterfly, *Pieris occidentalis* (Lepidoptera: Pieridae) at Fairbanks, Alaska. *Arctic and Alpine Research* 7:



Fig. 1.—Railroad yard at Fairbanks, Alaska, looking east. Virtually the entire area from the trees at left to the road is a solid stand of *Lepidium densiflorum*.

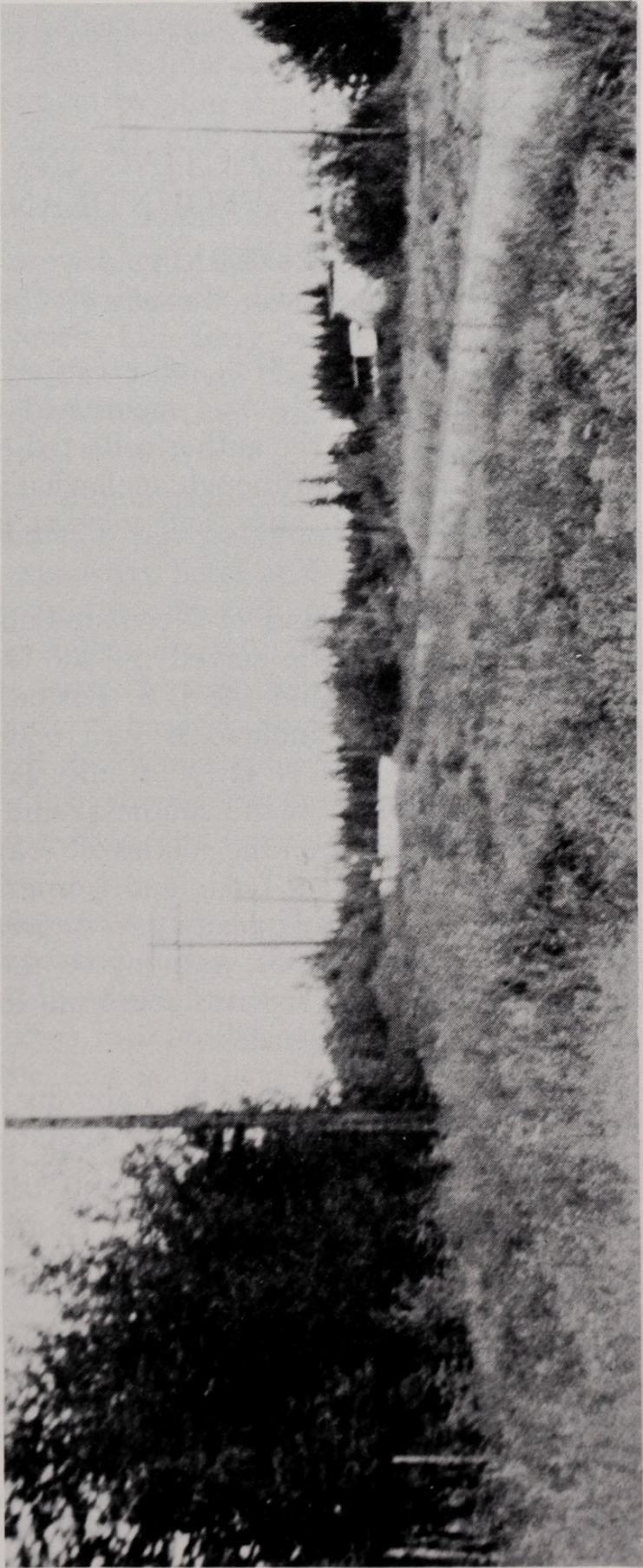


Fig. 2.—Same area, looking south. In broken cloudiness *P. occidentalis nelsoni* thermoregulatory behavior was readily observed on bare soil among *Lepidiums*, foreground.



Shapiro, Arthur M. 1976. "Habitat: *Pieris occidentalis Nelsoni* (Pieridae)." *The Journal of Research on the Lepidoptera* 15(2), 103–105.

<https://doi.org/10.5962/p.333715>.

View This Item Online: <https://www.biodiversitylibrary.org/item/238345>

DOI: <https://doi.org/10.5962/p.333715>

Permalink: <https://www.biodiversitylibrary.org/partpdf/333715>

Holding Institution

Harvard University, Museum of Comparative Zoology, Ernst Mayr Library

Sponsored by

Harvard University, Museum of Comparative Zoology, Ernst Mayr Library

Copyright & Reuse

Copyright Status: In copyright. Digitized with the permission of the rights holder.

Rights Holder: The Lepidoptera Research Foundation, Inc.

License: <http://creativecommons.org/licenses/by-nc-sa/4.0/>

Rights: <http://biodiversitylibrary.org/permissions>

This document was created from content at the **Biodiversity Heritage Library**, the world's largest open access digital library for biodiversity literature and archives. Visit BHL at <https://www.biodiversitylibrary.org>.