

## FURTHER OBSERVATIONS AND RECORDS FOR BUTTERFLIES (LEPIDOPTERA) IN NORTHERN AUSTRALIA

S.J. JOHNSON<sup>1</sup> and P.S. VALENTINE<sup>2</sup>

<sup>1</sup>Oonoonba Veterinary Laboratory, PO Box 1085, Townsville, Qld 4810

<sup>2</sup>Tropical Environment Studies and Geography, James Cook University, Townsville, Qld 4811

### Abstract

*Euploea netscheri* Snellen and *Prosotas gracilis* (Rober) are recorded within Australian limits in Torres Strait for the first time. The female of *Charaxes latona* Butler from Iron Range is illustrated and range extensions are given for *Taractrocera ina* Waterhouse and *Nacaduba calauria calauria* (Felder). New foodplants are recorded for *Neohesperilla crocea* (Miskin), *Euploea alcatheae monilifera* (Moore) and *Neopithecops lucifer heria* (Fruhstorfer).

### Introduction

Since 1989 the authors have been undertaking a biological survey of the butterfly fauna of northern Australia and interesting discoveries have been reported previously (Valentine and Johnson 1992, Johnson 1993, Johnson *et al.* 1994, 1995). This paper reports new records, information or range extensions for eight species of butterflies in northern Australia.

### HESPERIIDAE

#### *Neohesperilla crocea* (Miskin)

At Heathlands on Cape York Peninsula adult females were commonly observed ovipositing on the prostrate grass *Schizachyrium pachyarthron* C.A. Gardner (Poaceae) and early instar larvae readily established shelters and fed on the plant. Rearing of larvae to maturity was not attempted.

#### *Taractrocera ina* Waterhouse

Two males collected at Kalumburu in March 1990 and another from the Mitchell Plateau (14°36'S 125°47'E) in April 1995 are the first records of this species from Western Australia. Previously it was known as far west as the Daly River in the Northern Territory (Common and Waterhouse 1981).

### NYMPHALIDAE

#### *Euploea alcatheae monilifera* (Moore)

Adults were common on Saibai and Dauan Islands in Torres Strait in April 1994 and May 1995. Two adults were reared from large silver pupae collected from the introduced *Nerium oleander* (Apocynaceae) on Dauan Island.

#### *Euploea netscheri* Snellen

A male (Figs 1, 2) collected on Dauan Island, Torres Strait in May 1995 is the first record of this species within Australian limits. It is superficially similar to males of *E. alcatheae*, *E. algea* and *E. sylvester* with which it was flying. It can be separated by the narrower fore wings, the pale margins of the wings and the large single sex brand located apically in the expanded cell CuA<sub>2</sub> (Ackery and Vane-Wright 1984).



*Charaxes latona* Butler

This species has been collected regularly at Iron Range since it was first recorded in 1978 (Johnson and De Baar 1980), but only the male has been known previously from Australia. During 1995 and 1996 numerous females were observed and several were captured.

The female (Figs 3, 4) is larger than the male and on the upperside the fore wing terminal band is broken into discrete spots. On the hind wing the small white spots on the terminal band extend from the tornus to the apex and the tail is slightly spatulate. On the underside the ground colour is ochre with prominent purplish subterminal and submedian bands.

A female collected in December 1995 was confined for 10 days on *Cryptocarya triplinervis* (Lauraceae) and *Celtis paniculata* (Ulmaceae) in Townsville but failed to oviposit. On dissection the abdomen contained 51 eggs.

## LYCAENIDAE

*Nacaduba calauria calauria* (Felder)

Reported previously from Murray Island (Johnson *et al.* 1994), a single male collected on Dauan Island in April 1994 extends the distribution of the species within Torres Strait. A female from Murray Island previously identified as *Nacaduba* sp. nr *mioswara* by Lambkin and Knight (1990) has been examined by us and is *N. c. calauria*.

*Prosotas gracilis* (Rober)

A pair (Figs 5-8) collected on Dauan Island, Torres Strait in April 1994 is the first record of this species within Australian limits. They were feeding at blossom of *Pongamia pinnata* (Fabaceae) in company with *Anthea seltuttus* and *Arhopala* spp.. Elsewhere it occurs from Sumatra eastwards to West Irian and Papua New Guinea (Tite 1963). The Australian specimens appear closest to the nominotypical race and can be distinguished from *P. nora* by the larger size, lack of hindwing tails, broader bands and distinctive brown underside. In the male genitalia the valvae are much broader than in other *Prosotas* spp.

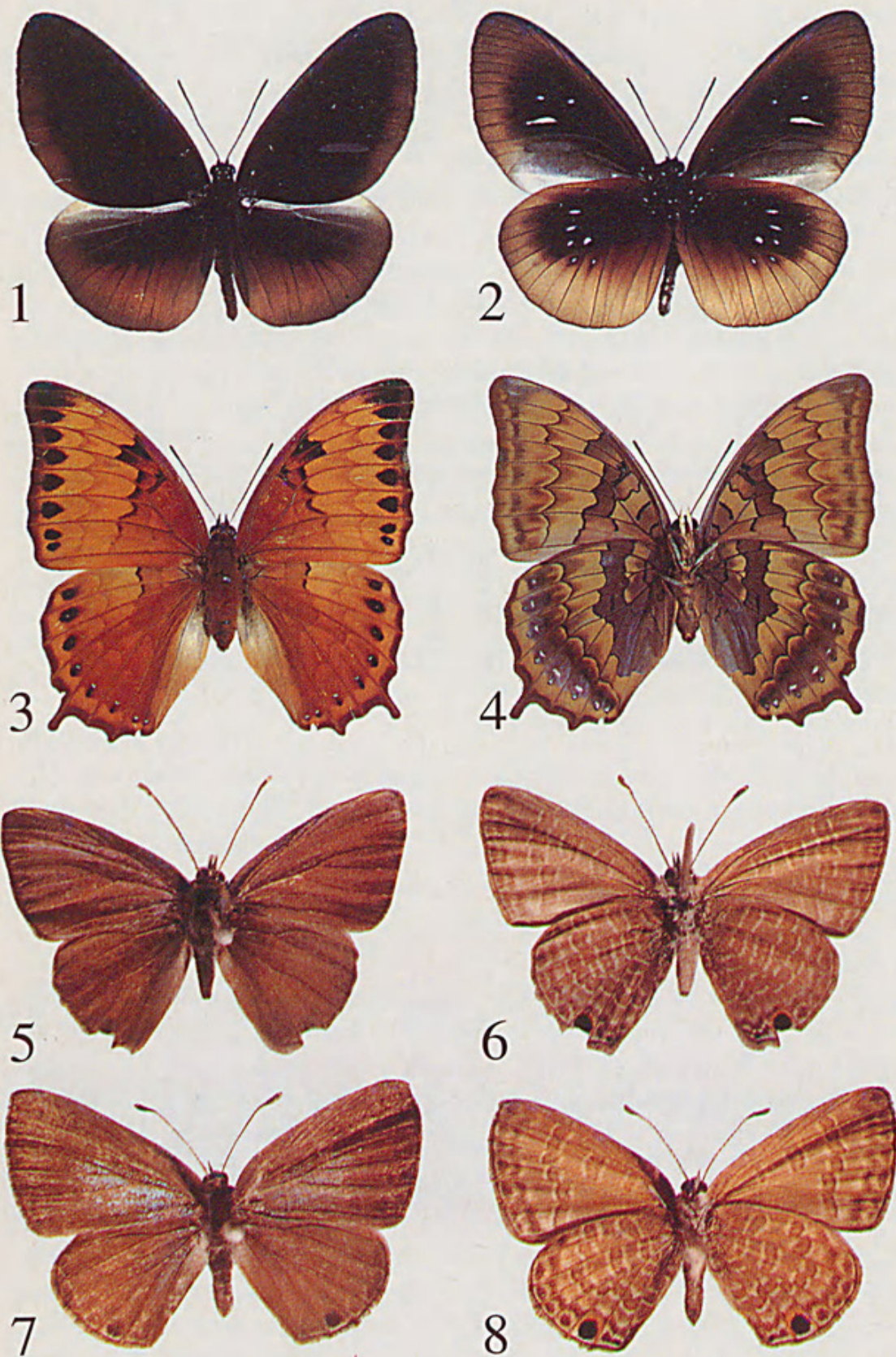
*Neopithecops lucifer heria* (Fruhstorfer)

Several adults were reared from larvae feeding on *Glycosmis trifoliata* (Blume) Spreng (Rutaceae) on Darnley Island in May 1995. The larvae fed on juvenile foliage of plants growing in deep shade in rainforest on the island.

**Acknowledgments**

We thank the Queensland Herbarium for identification of host plants and the Department of Environment and Heritage for permits to undertake work in areas under their control.





**Figs 1-8.** (1-2) *Euploea netscheri*, Dauan Island: (1) upperside, (2) underside. (3-4) *Charaxes latona* female: (3) upperside, (4) underside. (5-8) *Prosotas gracilis*, Dauan Island: (5) male upperside, (6) male underside, (7) female upperside, (8) female underside. Forewing lengths (1-2) 41mm; (3-4) 49mm; (5-8) 15mm.



## References

- ACKERY, P.R. and VANE-WRIGHT, R.I. 1984. Milkweed Butterflies. Pp.ix + 425. British Museum (Natural History), London.
- COMMON, I.F.B. and WATERHOUSE, D.F. 1981. *Butterflies of Australia*. Pp. xiv + 682. Angus and Robertson, Sydney.
- JOHNSON, S.J. 1993. Butterfly records of interest from northern Australia. *Australian Entomologist* 20: 75-76.
- JOHNSON, S.J. and DE BAAR, M. 1980. First record of *Charaxes latona* Butler (Lepidoptera: Nymphalidae) from Australia. *Australian Entomological Magazine* 6: 94-96.
- JOHNSON, S.J., JOHNSON, I.R. and VALENTINE, P.S. 1994. New and interesting butterfly records (Lepidoptera) from Torres Strait islands. *Australian Entomologist* 21: 121-124.
- JOHNSON, S.J., JOHNSON, I.R. and VALENTINE, P.S. 1995. Notes on the early stages of *Orsotriaena medus moira* Waterhouse & Lyell and *Melanitis constantia* Cramer (Lepidoptera: Nymphalidae: Satyrinae) from Torres Strait, Australia. *Australian Entomologist* 22: 65-68.
- LAMBKIN, T.A. and KNIGHT, A.I. 1990. Butterflies recorded from Murray Island, Torres Strait, Queensland. *Australian Entomological Magazine* 17: 101-112.
- TITE, C.E. 1963. A synonymic list of the genus *Nacaduba* and allied genera (Lepidoptera: Lycaenidae). *Bulletin of the British Museum (Natural History), Entomology* 13: 69-116.
- VALENTINE, P.S. and JOHNSON, S.J. 1992. Late dry season butterflies on Cape York Peninsula. *Victorian Entomologist* 22: 87-91.



Johnson, S J and Valentine, P S. 1997. "Further observations and records for butterflies (Lepidoptera) in northern Australia." *The Australian Entomologist* 24(4), 155–158.

**View This Item Online:** <https://www.biodiversitylibrary.org/item/307381>

**Permalink:** <https://www.biodiversitylibrary.org/partpdf/344016>

**Holding Institution**

Entomological Society of Queensland

**Sponsored by**

Atlas of Living Australia

**Copyright & Reuse**

Copyright Status: In copyright. Digitized with the permission of the rights holder.

Rights Holder: Entomological Society of Queensland

License: <http://creativecommons.org/licenses/by-nc-sa/4.0/>

Rights: <http://biodiversitylibrary.org/permissions>

This document was created from content at the **Biodiversity Heritage Library**, the world's largest open access digital library for biodiversity literature and archives. Visit BHL at <https://www.biodiversitylibrary.org>.