

V. Enumeration of the *Heteroptera* (*Rhynchota*) collected by Signor Leonardo Fea in Burma and its vicinity.
By W. L. DISTANT.

PART I.

Family PENTATOMIDÆ.

[Read April 3rd, 1901.]

THIS enumeration refers to the whole of the Pentatomidæ excepting the sub. fam. *Plataspinae* which has already been studied by A. L. Montandon ("Annali Museo Civico di Storia Naturale di Genova," vol. xxxiv, 1894, pp. 119–144). The collection made by Sign. Fea in this Family alone is a very representative one, and with a few specimens collected by Capt. D. Comotto comprises no fewer than 136 species, which, with the addition of the 19 *Plataspinae* enumerated by Montandon, gives a total of 155 species. They are all contained in the Genoa Museum, and are distributed in the following subfamilies:—

| | | | | | |
|-----------------|------------|------------|----------|-------------|-----------|
| Scutellerinæ | 16 | | | | |
| Graphosominæ | 5 | | | | |
| Cydninæ | 17 | New Genera | 2 | New Species | 4 |
| Pentatominae | 54 | . | 1 | . | 8 |
| Asopinæ | 7 | | | | |
| Tessaratominae | 9 | . | 1 | . | 2 |
| Dinidorinæ | 10 | . | | . | 1 |
| Phyllocephalinæ | 10 | . | | . | 2 |
| Urolabidinæ | 4 | . | | . | 1 |
| Acanthosominæ | 4 | | | | |
| | <u>136</u> | | <u>4</u> | | <u>18</u> |

The new genera will be figured in a forthcoming volume of Mr. Blanford's "Fauna of British India," on which I am now engaged, and which will be devoted to the order Rhynchota.

Family PENTATOMIDÆ.

Subfamily SCUTELLERINÆ.

Solenostethium rubropunctatum, Guér., Tenasserim; Meetan.

Cantao ocellatus, Thunb., Burma; Carin, Asciuii Cheba, 1200–1300 m.

Pacilocoris latus, Dall., Burma; Carin Cheba, 900–1100 m.

Pacilocoris hardwicki, Westw., Burma; Carin Cheba, 900–1100 m.

Pacilocoris druræi, Linn., Burma; Catcin Cauri, Asciuii Cheba, 1200–1300 m.; Carin Cheba, 900–1100 m.

Pacilocoris rufigenis, Dall., Burma; Carin Cheba, 900–1100 m.

Pacilocoris interruptus, Westw., Burma; Carin Cheba, 900–1100 m.

Scutellera nobilis, Fabr., Tenasserim; Moulmein.

Brachyaulax oblonga, Westw., Burma; Bhamo, Mitanga.

Chrysocoris grandis, Thunb.

var. *baro*, Fabr., Burma; Carin Cheba, 900–1100 m.; Tenasserim; Mt. Mooleyit, 600–1200 m.

var. *pallens*, A. and S., Burma; Bhamo.

Chrysocoris stolii, Wolff, Burma; Carin Cheba, 900–1100 m. Bhamo, Toungoo. Pegu; Palon. Tenasserim, Thagata, Malewoon.

Chrysocoris eques, Fabr., Burma; Carin Cheba, 900–1100 m.

Chrysocoris fascialis, White; Burma; Carin Cheba, 900–1100 m.

Lamprocoris lateralis, Guér., Burma; Carin Cheba, 900–1100 m.

Lamprocoris spinigera, Dall., Burma; Catcin Cauri.

Hotea curculionides, Herr. Schaeff., Burma; Carin Cheba, 900–1100 m.; Burma; Bhamo. Tenasserim; Meetan. Pegu; Palon.

Subfamily *GRAPHOSOMINÆ*.

Podops affinis, Hagl., Burma; Carin Cheba, 900–1100.

Podops obscura, Dall., Tenasserim; Malewoon.

Podops coarctata, Fabr., Burma; Rangoon, Bhamo, Teinzo.

Podops limosa, Walk., Burma; Rangoon. Tenasserim; Kawkareet.

Aspidestrophus lineola, Voll., Burma; Carin Cheba, 900–1100 m.

Subfamily *CYDNINÆ*.

Stibaropus callidus, Schiedte, Burma; Schwego-Myo Toungoo, Katha, Rangoon. Pegu; Palon.

Stibaropus minor, Walk., Burma; Katha, Bhamo.

Stibaropus molginus, Schiedte, Burma; Sheninaga.

- Lactistes truncato-serratus*, Sign., Burma ; Rangoon, Teinzo, Carin Cheba. Tenasserim ; Thagata. Pegu ; Palon.
- Lactistes rastellus*, Schiöedte, Burma ; Rangoon, Toungoo, Prome, Carin.—Minhla (Comotto). Pegu ; Palon, Tenasserim ; Thagata.
- Adrisa magna*, Uhler, Burma ; Asciuii Ghecu. Tenasserim ; Meetan.
- Cydnus perpunctatus*, Sign., Burma ; Schwego-Myo. Pegu ; Palon.
- Cydnus indicus*, Westw., Burma ; Teinzo.
- Cydnus nigratus*, Fabr., Burma ; Carin Cheba, Mandalay, Rangoon.
- Gampsotes parallelus*, Sign., Burma ; Toungoo, Schwego-Myo, Rangoon, Katha. Pegu ; Palon.
- Macroscytus subæneus*, Dall., Burma ; Carin Cheba, Katha, Schwego-Myo. Tenasserim ; Thagata, Kawkareet. Pegu ; Palon.
- Geotomus pygmæus*, Dall., Burma ; Bhamo, Toungoo, Rangoon, Mandalay, Shennagon, Carin Cheba, Katha, Teinzo. Pegu ; Palon.
- Cydnopeltus incisus*, sp. n., Burma ; Teinzo.
- Cydnopeltus minutus*, sp. n., Burma ; Asciuii Ghecu.
- Nishadana typica*, Dist., Burma ; Rangoon.
- Heurnius typicus*, gen. n., sp. n., Burma ; Asciuii Ghecu.
- Heurnius erebus*, sp. n., Burma ; Rangoon. Pegu, Palon.

Subfamily *PENTATOMINÆ*.

- Dalpada oculata*, Fabr., Burma ; Bhamo, Carin Cheba.—Minhla (Comotto). Tenasserim ; Malewoon. Pegu ; Palon.
- Dalpada clavata*, Fabr., Burma ; Bhamo, Teinzo.—Minhla (Comotto). Pegu ; Palon.
- Dalpada jugatoria*, Leth., Burma, Carin Cheba, 900–1100 m.
- Erthesina fullo*, Thunb., Burma ; Mt. Heanlain. Pegu ; Palon.
- Surenus normalis*, gen. n., sp. n., Burma ; Carin Cheba, 900–1100 m.
- Asyla feæ*, sp. n., Burma ; Catcin Cauri.
- Belopis unicolor*, Dist., Burma ; Carin Cheba, 900–1100 m.
- Halyabbas unicolor*, Dist., Burma ; Metanja.
- Laprius antennatus*, sp. n., Burma ; Asciuii Cheba.
- Ædnus obscurus*, Dall., Burma ; Bhamo. Pegu ; Palon.
- Ænaria elongata*, Dall., Burma ; Teinzo. Tenasserim ; Kawkareet.

Ochrophara montana, Dist., Burma; Bhamo, Carin Cheba.

Odius obscurus, sp. n., Burma; Katha, Teinzo.

Plexippus fulvescens, Dall., Burma; Bhamo, Teinzo, Rangoon, Carin Cheba.

Plexippus vittatus, sp. n., Burma; Carin Cheba, 900–1100 m.

Cappæa taprobanensis, Dall., Burma; Carin Cheba, 900–1100 m.

Niphe subferruginea, Westw., Burma; Asciuii Cheba. Pegu; Palon.

Halyomorpha picus, Fabr., Burma; Asciuii Cheba. Pegu; Palon.

Tolumnia latipes, Dall., Burma; Bhamo, Carin Cheba.

[*Adria parvula*, Dall.] Burma.—Minhla (Comotto).

Æschrocoris tuberculatus, Stål., Burma; Carin Cheba, Bhamo. Pegu; Palon.

Æschrocoris obscurus, Dall., Burma; Carin Cheba.

Eysarcoris guttigera, Thunb., Burma; Bhamo, Catcin Cauri, Carin Cheba.—Minhla (Comotto). Tenasserim, Plapoo, Malewoon. Pegu; Palon.

Eysarcoris ventralis, Westw., Burma; Teinzo, Yenang-young, Bhamo.

Eysarcoris rosaceus, sp. n., Burma; Carin Cheba, 900–1100 m.

Carbula crassiventris, Dall., Burma; Rangoon, Catcin Cauri, Carin Cheba. Tenasserim; Mt. Mooleyit.

Carbula scutellata, Dist., Tenasserim; Moulmein.

Carbula producta, sp. n., Burma; Carin Cheba.

Cratonotus coloratus, Dist., Burma; Carin Cheba.

Agnoscelis nubila, Fabr., Tenasserim; Malewoon.

Eurydema pulchra, Westw., Burma; Teinzo, Bhamo.

Eurydema liturifera, Walk., Burma; Teinzo.

[*Stenozygum speciosum*, Dall.] Burma.—Minhla (Comotto).

Cinxia limbata, Fabr., Burma; Catcin Cauri. Tenasserim; Thagata.

Strachia crucigera, Hahn., Burma; Teinzo, Bhamo, Schwego-Myo.

Alcimus coronatus, Stål., Burma; Teinzo, Bhamo; Carin Cheba.

Hoplistodera incisa, Dist., Burma; Carin Cheba.

Hoplistodera virescens, Dall., Burma; Asciuii Ghecu, Carin Cheba.

Catacanthus incarnatus, Dru., Burma; Bhamo.—Minhla (Comotto).

- Nezara viridula*, Linn., Burma; Catcin Cauri, Carin Cheba. Tenasserim; Thagata.
- Hyllus florens*, Walk., Tenasserim; Malewoon.
- Plautia fimbriata*, Fabr., Burma; Bhamo, Teinzo, Carin Cheba.
- Critheus lineatifrons*, Stål., Burma; Carin Cheba. Tenasserim; Kawkareet. Pegu; Palon.
- Antestia anchora*, Thunb., Burma; Carin Cheba, Bhamo. Tenasserim; Thagata.
- Antestia pulchra*, Dall., Burma; Carin Cheba. Tenasserim; Thagata.
- Antestia degenera*, Walk., Burma; Teinzo, Bhamo, Rangoon, Katha.
- Menida histrio*, Fabr., Burma; Bhamo, Schwego-Myo.
- Menida formosa*, Westw., Burma; Bhamo, Carin Cheba.
- Brachycoris insignis*, Dist., Burma; Rangoon. Pegu; Palon.
- Rhyncocoris humeralis*, Thunb., Burma; Bhamo.
- Priassus exemptus*, Walk., Tenasserim; Mt. Mooleyit.
- Fernelius indicus*, Dist., Burma; Carin Cheba.
- Sennertus typicus*, gen. n., sp. n.; Burma; Carin Cheba.
- Placosternum taurus*, Fabr., Burma; Bhamo.

Subfamily *ASOPINÆ*.

- Zicrona cærulea*, Linn., Burma, Carin Cheba.
- Blachia ducalis*, Walk., Burma; Carin Cheba.
- Cazira verrucosa*, Westw., Burma; Schwego-Myo, Bhamo. Carin Cheba.—Minhla(Comotto), Tenasserim; Meetan, Thagata. Pegu; Palon.
- Canthecona furcellata*, Wolff., Burma; Bhamo, Teinzo, Carin Cheba.
- Canthecona tibialis*, Dist., Burma; Bhamo.
- Picromerus obtusus*, Walk., Burma; Carin Cheba.
- Asopus malabaricus*, Fabr., Burma; Bhamo. Pegu; Palon.

Subfamily *TESSARATOMINÆ*.

- Tessaratomya javanica*, Thunb., Burma; Carin Cheba. Tenasserim; Meetan.
- Eusthenes polyphemus*, Stål., Burma; Carin Cheba.
- Eusthenes eurytus*, Dist., Burma; Catcin Cauri.
- Eusthenes rubefactus*, sp. n., Burma; Carin Cheba.
- Vitruvius insignis*, gen. n., sp. n., Burma; Rangoon.
- Eurostus ochraceous*, Montand., ? Burma; Carin Cheba.

- Pycanum rubens*, Fabr., Tenasserim ; Mooleyit, Thagata.
Pycanum ochraceum, Dist., Burma, Carin Cheba.
Pycanum ponderosum, Stål., Tenasserim ; Malewoon.

Subfamily *DINIDORINÆ*.

- Cyclopelta obscura*, Lep. and Serv., Burma ; Carin Cheba.
Cyclopelta siccifolia, Westw., Burma ; Metauja, Teinzo, Bhamo, Rangoon.—Minhla (Comotto).
 [*Aspongopus janus*, Fabr.] Burma.—Minhla (Comotto).
Aspongopus circumcinctus, Walk., Burma ; Carin Cheba, Catein Cauri.
Aspongopus fuscus, Westw., Tenasserim ; Meetan.
Aspongopus nepalensis, Westw., Burma ; Bhamo. Tenasserim ; Malewoon.
Aspongopus brunneus, Thunb., Burma ;—Minhla (Comotto).
Megymenum brevicorne, Fabr., Burma ; Rangoon.
Megymenum subpurpurascens, Westw., Burma ; Bhamo, Carin Cheba. Pegu ; Palon.
Byrsodepsus nigritus, sp. n., Pegu ; Palon.

Subfamily *PHYLLOCEPHALINÆ*.

- Cressona valida*, Dall., Burma ; Carin Cheba, Bhamo.
Dalsira scabrata, sp. n., Burma ; Carin Cheba, Asciuii Cheba.
Dalsira glandulosa, Wolff, Burma ; Bhamo.
Gonopsis coccinea, Walk., Burma ; Bhamo, Carin Cheba. Pegu ; Palon.
Gonopsis lunata, sp. n., Burma ; Carin Cheba.
Diplorhinus quadricornis, Stål, Burma ; Rangoon.
Tetroda histeroides, Fabr., Burma ; Bhamo, Carin Cheba.
Megarhynchus limatus, Herr. Schæff., Burma ; Bhamo.
Megarhynchus truncatus, Westw., Pegu ; Palon.
Megarhynchus rostratus, Fabr., Burma ; Teinzo, Carin. Tenasserim ; Malewoon. Pegu ; Palon.

Subfamily *UROLABIDINÆ*.

- Urolabida histrionica*, Westw., Burma ; Bhamo, Rangoon.
Urostylis fumigata, Walk., Burma ; Carin Cheba.
Urostylis gracilis, Dall., Burma, Carin Cheba.
Urostylis farinaria, sp. n., Burma ; Rangoon, Carin Cheba.

Subfamily ACANTHOSOMINÆ.

Microdeuterus megacephalus, Herr. Schaeff., Pegu ; Palon.

Sastragala javanensis, Dist., Burma ; Carin Cheba.

Anaxandra compacta, Dist., Burma ; Carin Cheba.

Anaxandra sigillata, Stål., Burma ; Carin Cheba.

DESCRIPTIONS OF NEW GENERA AND SPECIES.

Cydnopeltus incisus, sp. n.

Black, shining. Head with the lateral marginal areas thickly and coarsely punctate, the disk more sparsely punctate ; antennæ dark castaneous the apices of the joints somewhat paler ; pronotum glabrous with a deep straight discal transverse impression ; scutellum with a basal series of punctures, the lateral margins coarsely and lineately punctate from a little beyond base, the disk rugulose and with some scattered very deep punctures ; corium coarsely punctate excepting the inner apical area which is levigate ; membrane very pale brown.

Long. 6 millim. Lat. 4 millim.

Habitat. BURMA ; Teinzo (Fea).

Allied to the Javan *C. horvathi*, Sign., but differing by the transversely impressed pronotum, different punctuation, etc.

Cydnopeltus minutus, sp. n.

Pale castaneous ; antennæ with the apices of the joints distinctly paler ; head somewhat irregularly, coarsely and longitudinally carinate ; pronotum depressed and levigate near anterior margin where there is a distinct central longitudinal incision, remaining area sparingly punctate, and with a transverse central incision ; scutellum sparingly punctate and transversely wrinkled from beyond base, depressed near apex ; corium sparingly punctate, the internal area and lateral margin ochraceous ; membrane pale ochraceous.

Long. 3 millim.

Habitat. BURMA ; Carin, Asciuii Ghecu (Fea).

Heurnius, gen. nov.

Body elongate, apex of abdomen slightly attenuated narrower than pronotum. Head truncate anteriorly, the lateral lobes reflexed and somewhat concave. Pronotum broader than long, the lateral

margins straight but convexly rounded towards apical angles, posterior margin straight, anterior margin moderately concave. Scutellum small, triangular, about one-third the length of abdomen. Corium small the apical margin concavely sinuate; membrane large, a little more than half the length of abdomen. Anterior tibiae dilated and spined at apices.

This genus is allied to *Blæna*, Walk. (= *Macrhymenus*, Sign.), from which it can be at once separated by the shape of the scutellum.

Heurnius typicus, sp. n.

Black; posterior margin of the pronotum, the scutellum and the corium dark castaneous; antennæ ochraceous; membrane greyish; legs castaneous, the tarsi ochraceous.

Body above thickly and very coarsely punctate; central lobe of head with the apical angles prominent.

Long. 4 millim.

Habitat. BURMA; Carin, Asciuii Ghecu (Fea).

Heurnius erebus, sp. n.

Black, shining; antennæ pale castaneous; legs dark castaneous, tarsi ochraceous; membrane pale greyish.

Body above very thickly and coarsely punctate; pronotum with a discal transverse impression.

Long. $3\frac{1}{2}$ millim.

Habitat. BURMA; RANGOON (Fea); PEGU; Palon, (Fea).

Broader and less elongate than the preceding species, colour also different.

Surenus, gen. n.

Moderately ovate and elongate. Head long and moderately broad, the lateral lobes much longer than the central and broadly cleft between their apices which are obliquely subtruncate, lateral margins concavely sinuate and reflexed; eyes prominent. Antennæ hirsute, five-jointed, basal joint robust and reaching the apex of the head, second and fifth joints subequal in length. Rostrum reaching the intermediate coxæ. Pronotum about twice as broad as long between the lateral angles which are subprominent, the lateral margins dentate and moderately sinuate, the anterior angles subspinous,

posterior margin very slightly rounded. Scutellum more than half the length of the abdomen, its apex narrowed and subacute. Corium not quite reaching the margins of the connexivum which is moderately angulated at the segmental incisures; apical margins of corium a little concavely sinuate, apical angle acutely produced. Membrane with longitudinal veins. Abdomen beneath globose; tibiæ sulcate but not dilated.

I have placed this genus near *Apodiphus* with which it has many affinities.

Surenus normalis, sp. n.

Head, pronotum and scutellum piceous or very dark olivaceous, corium paler olivaceous, membrane dark cupreous, apex of scutellum narrowly ochraceous; abdomen beneath piceous, castaneous on disk; sternum and head beneath dark olivaceous; legs castaneous; antennæ castaneous the apical joint stramineous.

Head thickly and rather coarsely punctate; pronotum finely granulate with an indistinct central impression. Scutellum finely granulate and transversely wrinkled. Corium thickly and finely punctate.

Long. 20 millim. Exp. pronot. angl. 11 millim. Max. exp. abd. 12 millim.

Habitat. BURMA; Carin Cheba (Fea).

Asyla feæ, sp. n.

Brownish-ochraceous; head, pronotum, and scutellum transversely rugulose and coarsely punctate. Head with the central lobe more or less margined with black punctures; antennæ with the first, second and third joints black (remaining joints mutilated); corium thickly and finely punctate; membrane fuscous; head beneath and sternum brownish-ochraceous; rostrum legs and abdomen testaceous.

Head with the lateral margins slightly sinuate and moderately reflexed, antennæ with the second joint distinctly shorter than the third; pronotum with the lateral margins crenulate, the lateral angles moderately prominent, their apices broadly subacute, their margins non-crenulate. Membrane with six longitudinal veins, asymmetrically bifurcate; abdomen obscurely centrally sulcate on the second and third segments; rostrum reaching the base of the third abdominal segment, its apex black.

Long. 20 millim. Exp. pronot. angl. 9 millim.

Habitat. BURMA; Catcin Cauri (Fea).

Strongly diverging from the only other and typical representative of the genus *A. indicatrix*, Walk., by the more flattened body and much less basal convexity of the pronotum, the lateral angles of which are much less produced; the head is narrower especially at apex and the lateral margins less sinuate; veins to membrane more bifurcate, etc.

Characters not mentioned by Walker in his diagnosis of the genus *Asyla* are the obscure basal sulcation to the abdomen, and the presence of a small but distinct spine on the inner margin of the anterior tibiæ at about one-third from apex.

The affinities of *Asyla* are not with *Galedanta* and *Euschistus* as stated by Walker, but with the genera allied to *Atelocera* in the group separated by Dallas as *Halydidæ*.

Laprius antennatus, sp. n.

Ochraceous, somewhat thickly, coarsely, and blackly punctate; antennæ fuscus, basal joint somewhat testaceous, bases of third, fourth and fifth joints luteous; eyes black on the inner margins of which is an impunctate space; pronotum with a distinct central pale carination; scutellum with a pale levigate spot in each basal angle, and faint indications of a central pale carination; basal costal margin to corium pale levigate; body beneath somewhat thickly blackly punctate, the punctures thicker and more fasciate towards the lateral margins, with a series of raised elongate pale levigate spots before the stigmata; femora reddish-ochraceous, blackly punctate, tibiæ luteous, their apices and the tarsi piceous.

Antennæ with the first and third joints shortest, the pronotum and scutellum rugulose; rostrum reaching the posterior coxæ, its apex black.

Long. 12 millim.

Habitat. BURMA; Carin, Asciuii Cheba (Fea).

Allied to *L. varicornis*, Dall., and differing by the coloration of the antennæ, the somewhat broader body and more rugulose pronotum and scutellum, the punctures much coarser, and the pale ante-stigmatal spots larger and more elongate.

Odius obscurus, sp. n.

Dull ochraceous, thickly covered with coarse black punctures; antennæ fuscous, the base of apical joints luteous; abdomen above fuscous violaceous, connexium thickly blackly punctate; membrane

smoky hyaline, the longitudinal veins fuscous; body beneath piceous; legs ochraceous, coarsely punctate. Head cleft at apex between the apices of the lateral lobes; antennæ with the second joint a little shorter than the third, fourth joint longest; pronotum with the lateral margins strongly recurved, and with a faint central longitudinal levigate line which is continued throughout the scutellum.

Long. 12 millim. Exp. pronot. angl. 6 millim.

Habitat. BURMA; Katha, Teinzo (Fea).

Plexippus vittatus, sp. n.

Dull ochraceous, thickly and darkly punctate, the coloration distinctly darker on the head and anterior half of pronotum which is separated by a transverse levigate fascia; body beneath pale ochraceous, the lateral areas of the sternum, a longitudinal fascia on each side of abdomen, the stigmata, and a spot on apical segment piceous; legs ochraceous, antennæ ochraceous, apex of third joint, more than apical half of fourth joint, and apical half of fifth joint piceous; second and third joints sub-equal in length.

Long. 11 millim. Exp. pronot. angl. $6\frac{1}{2}$ millim.

Habitat. BURMA; Carin Cheba (Fea).

Allied to *P. affinis*, Dist., but differing by the relative lengths of the second and third joints of the antennæ, the fasciate sternum and abdomen, the distinct transverse levigate fascia crossing centre of pronotum, etc.

Eysarcoris rosaceus, sp. n.

Ochraceous, thickly and darkly punctate, finely and very thickly on head, more coarsely and sparingly on pronotum, scutellum and corium; head with a central pale levigate longitudinal line not quite reaching apex; antennæ ochraceous; pronotum with the anterior and lateral margins palely levigate, the lateral angles rosaceous, two clusters of dark punctures on each side of the anterior area; pronotum with a large rounded pale levigate spot near each basal angle; membrane pale brownish hyaline. Body beneath ochraceous, thickly and darkly punctate; abdomen with a broad central greenish-black fascia, its lateral margins somewhat paler, with the stigmata and a series of small marginal spots, black; legs ochraceous finely spotted with black.

The head is long, almost as long as the pronotum; the lateral angles are strongly and robustly produced, their apices broadly sub-acute.

Long. $6-6\frac{1}{2}$ millim. Exp. pronot. angl. $5-5\frac{1}{2}$ millim.

Habitat. BURMA; Carin Cheba (Fea).

A species to be recognized by the produced and roseate lateral angles of the pronotum.

Carbula producta, sp. n.

Ochraceous, coarsely punctate; head very thickly and darkly punctate, the apex of the central lobe ochraceous; antennæ with the first, second and third joints ochraceous, fourth and fifth joints black with their bases ochraceous; pronotum coarsely and darkly punctate the lateral angles black; scutellum coarsely and darkly punctate with a small levigate luteous spot in each basal angle; corium more thickly punctate and slightly rugulose; membrane pale hyaline. Body beneath and legs ochraceous, lateral areas of the sternum and abdomen with scattered dark punctures, stigmata and an abdominal lateral marginal series of small spots, black; legs more or less finely black spotted.

Head somewhat narrow, long, and tapering; lateral angles of the pronotum strongly and robustly produced; second and third joints of the antennæ, and the fourth and fifth joints sub-equal in length.

Long. $7\frac{1}{2}$ –8 millim. Exp. pronot. angl. 6 millim.

Habitat. BURMA; Carin Cheba (Fea).

A species in which the elongate head resembles that of *C. trinotata*, Herr. Schæff.; the rest of the body more allied to *C. obtusangula*, Reut., but with the pronotal angles narrower and with their apices more acute.

Sennertus, gen. nov.

Head subtriangular, considerably longer than broad, the lateral lobes much larger than the central lobe and strongly cleft between their apices, lateral margins nearly straight. Antennæ with the basal joint short, robust, not nearly reaching apex of head, fourth joint longest, third and fifth joints subequal in length. Pronotum about twice as broad as long, the lateral angles prominent, robust, and obtusely angulated, the lateral margins moderately concave and serrate, anterior margin concave, posterior margin nearly straight. Scutellum about half the length of abdomen, moderately convex at basal area, narrowed at about one-third from apex which is angularly rounded, membrane with longitudinal veins. Abdomen gradually narrowing to apex. Rostrum with the second joint a little shorter than the third; fourth joint very slender. Mesosternum centrally carinate. Abdomen unarmed. Odoriferous aperture long and slender.

Allied to the Genus *Amyntor*, Stål., from which it differs by its more robust form; lateral margins of head not sinuated; anterior margin of the pronotum concave.

Sennertus typicus, sp. n.

Brownish-ochraceous, thickly and coarsely punctate, more sparsely on the head where there is a levigate ochraceous spot on the inner margin of each eye; lateral margins of head and pronotum very narrowly fuscous, posterior margins of lateral angles narrowly ochraceous; posterior margin narrowly levigate; scutellum with a small black spot in each lateral angle; corium with the lateral area more finely punctate than on disk; body beneath ochraceous with scattered brown punctures, stigmata and a double series of small segmental spots on each side, piceous; legs and antennæ reddish-ochraceous, femora spotted with fuscous.

Long. 22 millim. Exp. pronot. angl. 12 millim.

Habitat. BURMA; Carin Cheba (Fea).

Eusthenes rubefactus, sp. n.

Above dark castaneous tinged with olivaceous; body beneath with legs pale bright castaneous or ochraceous; abdomen above purplish-red; connexivum olivaceous spotted with ochraceous at segmental bases; antennæ piceous, with the basal joint—excluding apex—reddish-ochraceous; eyes inwardly margined with reddish-ochraceous.

Head with the lateral lobes obliquely striate, the basal area slightly rugulose; antennæ with the third joint shorter than the second or fourth joints, extreme apex of apical joint ochraceous. Pronotum with the lateral margins strongly wrinkled, the lateral angles sub-prominent and subacute.

♂. Posterior femora strongly incrassated, with a long and strong spine at less than half the length from base, a series of small spines on inner margin of apical area and with a prominent stout spine or tooth at apex.

Long. 27–33 millim. Exp. pronot. angl. 12–15 millim.

Habitat. BURMA; Carin Cheba (Fea).

The spotted connexivum, and the colour of the body beneath and legs will at once distinguish this species. In structure it is allied to *E. eurytus*, Dist.

Vitruvius, gen. nov.

Body ovate, moderately gibbous, attenuated posteriorly. Head small, deflected, lateral lobes meeting in front of central lobe, lateral

margins reflexed, anterior margin subtruncate, posterior margin truncate, well inserted in the pronotum; ocelli rather nearer to eyes than to each other. Rostrum reaching the intermediate coxæ, second joint longest. Antennæ five-jointed, basal joint stout, not quite reaching apex of head, second and third joints longest and subequal in length, fourth and fifth joints a little shorter and subequal. Pronotum convex, deflected anteriorly, broader than long, the whole lateral area produced into a broad subacute angulation; scutellum convex, more than half the length of the abdomen, its apex narrowed and rounded. Corium with its lateral margin convex, its apical margin slightly rounded. Membrane with longitudinal veins emitted from basal cellular areas. Abdomen with the lateral margins entire, not projecting beyond corium. Prosternum longitudinally sulcate, mesosternum obscurely carinate; metasternum obscurely elevated. Legs moderately robust; tibiæ sulcated, tarsi three-jointed.

A very distinct genus of the Tessaratominæ belonging to the Division Eusthenina, Stål., and not closely allied to any genus with which I am at present acquainted.

Vitruvius insignis, sp. n.

Ochraceous; anterior lateral margins of pronotum, lateral margins of corium near base, some obscure longitudinal series of punctures to pronotum in about six series, a double discal series at base of scutellum, and some scattered punctures on disk of corium and apical area of scutellum, black. Body beneath luteous, legs ochraceous. Head finely wrinkled and punctate, pronotum more coarsely so and with two elongate transverse impunctate spaces near anterior margin; scutellum distinctly transversely wrinkled, with a faint and broad central impression; corium somewhat thickly and finely punctate, but longitudinally levigate on disk.

Long. 17 millim. Exp. pronot. angl. $10\frac{1}{2}$ millim.

Habitat. BURMA; Rangoon (Fea).

Byrsodepsus nigrinus, sp. n.

Piceous; rostrum and apical joint of antennæ—excluding base—brownish-ochraceous.

Antennæ with the second joint longest, third joint prominently dilated and slightly shorter than fourth joint; head coarsely and rugosely punctate, the lateral lobes long and well separated internally; pronotum rugosely punctate, a broad transverse impression on anterior area which becomes foveate at lateral margins which are

obscurely crenulate ; posterior margin concave in front of scutellum ; scutellum transversely rugose ; corium thickly and finely punctate ; femora robust armed on each side with a strong spine near apex.

Long. 12 millim. Exp. pronot. angl. $5\frac{1}{2}$ millim.

Habitat. PEGU ; Palon (Fea).

Dalsira scabrata, sp. n.

Very dark castaneous ; connexivum and abdomen beneath testaceous ; antennæ fuscous, fourth and fifth joint pale luteous, rather more than apical half of fifth joint fuscous ; membrane brownish-ochraceous.

Head very coarsely punctate, somewhat tessellate on basal half ; second joint of antennæ a little shorter than third, third and fourth subequal, fifth longest ; pronotum very coarsely rugose with a distinct transverse ridge between the lateral angles beyond which it is deflected anteriorly and distinctly transversely foveate, the lateral margins strongly and coarsely dentate, the lateral angles a little prominent, broadly rounded and coarsely dentate ; scutellum transversely rugose ; corium very finely punctate and slightly wrinkled ; rostrum dull ochraceous and reaching the anterior coxæ.

Long. 17 millim. Exp. pronot. angl. 10–11 millim.

Habitat. BURMA ; Carin Cheba and Asciuii Cheba (Fea).

A species with no near ally.

Gonopsis lunata, sp. n.

Sanguineous ; antennæ luteous—sometimes tinged with sanguineous—apical joint black with its base luteous ; ocelli luteous ; pronotum with a transverse fascia between the lateral angles bright luteous—in some specimens this fascia is concolorous—and with two transverse dull ochraceous patches on anterior area ; scutellum with the lateral and apical areas more or less ochraceous ; membrane pale hyaline ; body beneath and legs sanguineous.

Head triangular the lateral lobes meeting well in front of the central lobe, their margins and the central lobe coarsely punctate ; pronotum with the lateral angles very prominently and sublunately produced, their apices subacute, directed forwardly and a little upwardly, the lateral margins dentate, a distinct ridge between the lateral angles, behind which the surface is distinctly rugulose, between the ridge and the anterior margin it is deflected, with scattered coarse dark punctures, the dull ochraceous patches being foveate ; scutellum transversely rugose ; corium thickly and finely punctate, its basal lateral margin slightly crenate ; antennæ with the second and third

joints short and subequal in length, fourth and fifth joints longer and subequal in length.

Long. 15-18 millim. Exp. pronot. angl. 11-13 millim.

Habitat. BURMA; Carin Cheba (Fea).

A species to be recognised by the widely extended and lunate lateral pronotal angles. I possess a series of specimens from Upper Assam, collected by Mr. Doherty.

Urostylis farinaria, sp. n.

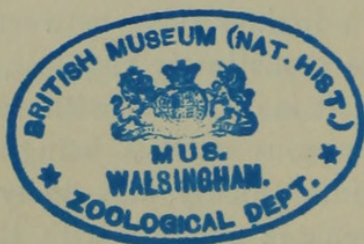
Very pale luteous in some specimens inclining to ochraceous; eyes, apical areas of third, fourth and fifth joints of antennæ, and a spot near centre of apical margin to corium, black.

Antennæ with the third joint shortest; pronotum and scutellum somewhat sparingly but coarsely punctate; inner and outer claval margins with a longitudinal series of coarse punctures; corium with the inner area impunctate, the outer area coarsely but sparingly punctate.

Long. 10-12 millim.

Habitat. BURMA; Carin Cheba, Rangoon (Fea).

APRIL 30, 1901.





Distant, William Lucas. 1901. "V. Enumeration of the Heteroptera (Rhynchota) collected by Signor Leonardo Fea in Burma and its vicinity." *Transactions of the Entomological Society of London* 49, 99–114.

<https://doi.org/10.1111/j.1365-2311.1901.tb02734.x>.

View This Item Online: <https://www.biodiversitylibrary.org/item/130127>

DOI: <https://doi.org/10.1111/j.1365-2311.1901.tb02734.x>

Permalink: <https://www.biodiversitylibrary.org/partpdf/36451>

Holding Institution

Natural History Museum Library, London

Sponsored by

Natural History Museum Library, London

Copyright & Reuse

Copyright Status: Public domain. The BHL considers that this work is no longer under copyright protection

This document was created from content at the **Biodiversity Heritage Library**, the world's largest open access digital library for biodiversity literature and archives. Visit BHL at <https://www.biodiversitylibrary.org>.