

Special Exhibit, December 1-31 . . .

THE PEOPLES LIVING IN U.S. TRUST TERRITORY AND GUAM

By ALEXANDER SPOEHR
CURATOR OF OCEANIC ETHNOLOGY

DURING DECEMBER the Museum will present an exhibit on the peoples of the United States Trust Territory of the Pacific Islands and of Guam. The Trust Territory, Guam, and the adjacent Gilbert

Today the United States, by virtue of the trusteeship created by the United Nations, is responsible for the well-being of the peoples of the United States Trust Territory as well as of those on Guam, an American possession since 1899. A principal purpose of the exhibit is to call the attention of the

The background of island culture is further portrayed by exhibits of material from the Museum collections. The photographs on this page and page 2 are by Raymond Sato.

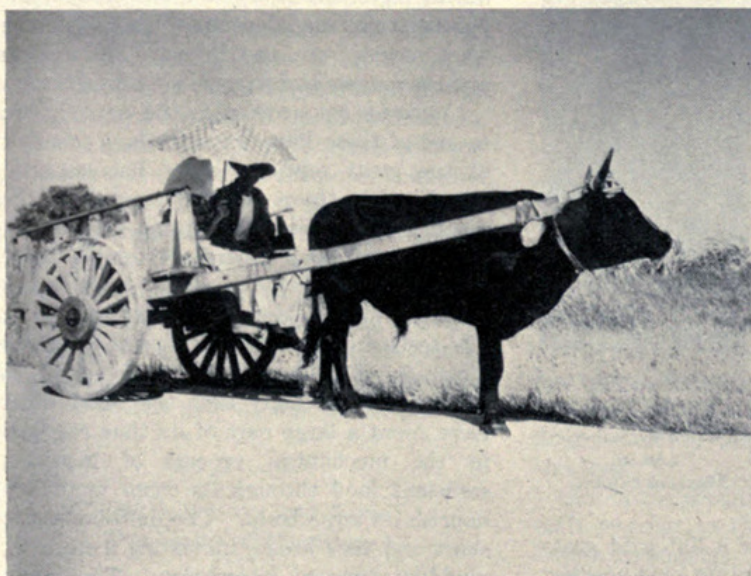
Prior to the opening of the exhibit, a special preview will be held from 1 to 4 o'clock on the



YAPESE GENTLEMAN AT SOLITAIRE; CHILDREN 'KIBITZING'



A PONAPE FAMILY IN OUTRIGGER CANOE



ON SAIPAN THERE IS NO HURRYING



A HOME ON A PACIFIC LAGOON

Islands (a British possession) constitute a major region of the Pacific called *Micronesia*, which covers some three million square miles of ocean dotted with small islands.

Although for four years American forces fought a series of bitter land, sea, and air battles across the vast expanse of the Pacific and although the names of islands virtually unknown in the United States before World War II are now in the common vocabulary, knowledge of the Pacific and of American responsibilities in this area remains confined primarily to specialists.

public to this American responsibility, to show visually the people who live on these islands, and to communicate the essential facts of their way of life. The exhibit is designed not as an academic curiosity but to serve an important educational function.

The Museum is fortunate in securing for this exhibit a splendid series of paintings and drawings by Joseph Feher and photographs by Raymond Sato, assembled and generously loaned by the Honolulu Academy of Arts. These depict the peoples and island setting of the Trust Territory and Guam.

afternoon of Friday, November 30, for Museum Members and their guests. Dr. Alexander Spoehr, Curator of Oceanic Ethnology, and Phillip H. Lewis, University of Chicago Museum Fellow, will be present in Stanley Field Hall to answer questions.

Museum Admission Tax Removed

Effective from November 1, by act of the recent Congress, the 20 per cent federal tax on museum admission charges, imposed since October 1, 1941, is no longer to be collected.



Spoehr, Alexander. 1951. "The People Living in the U.S. Trust Territory and Guam." *Bulletin* 22(12), 3-3.

View This Item Online: <https://www.biodiversitylibrary.org/item/25639>

Permalink: <https://www.biodiversitylibrary.org/partpdf/370829>

Holding Institution

University Library, University of Illinois Urbana Champaign

Sponsored by

University of Illinois Urbana-Champaign

Copyright & Reuse

Copyright Status: In copyright. Digitized with the permission of the Chicago Field Museum.
For information contact dcc@library.uiuc.edu.

Rights Holder: Field Museum of Natural History

This document was created from content at the **Biodiversity Heritage Library**, the world's largest open access digital library for biodiversity literature and archives. Visit BHL at <https://www.biodiversitylibrary.org>.