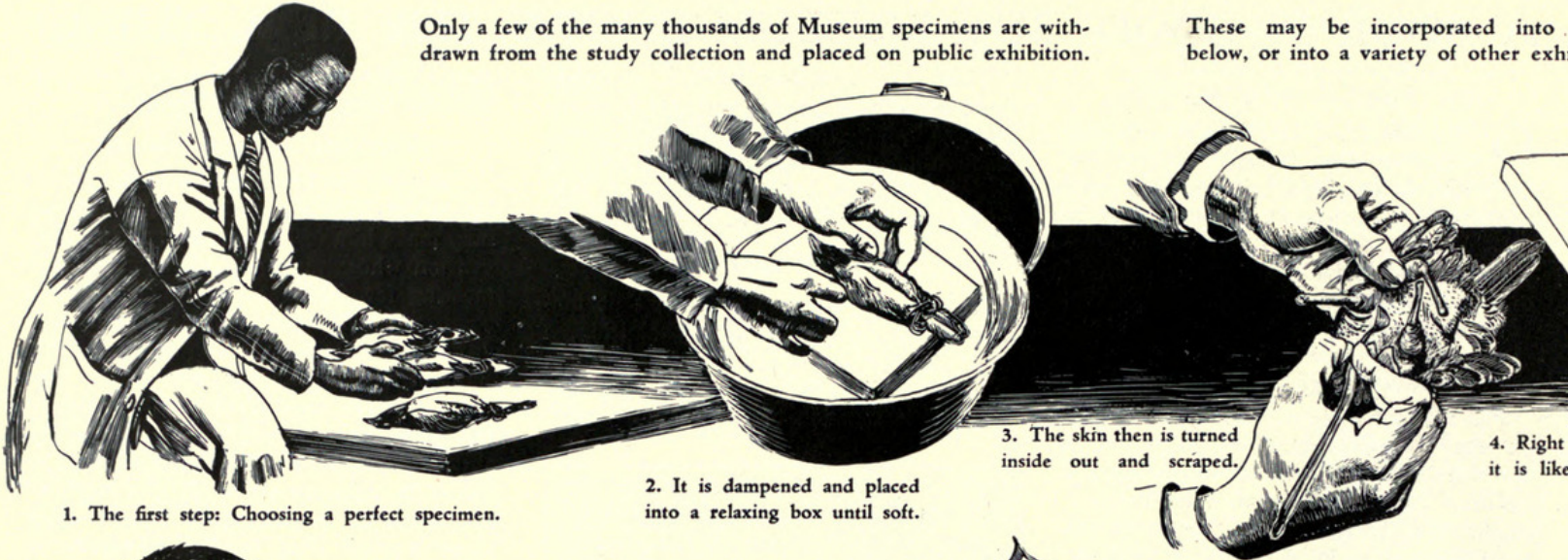


# EXHIBITS: ONE OF THE MUSEUM'S P

BY AUSTIN L. RAND      ILLUSTRATED BY E. JOHN PFIFFNER

Only a few of the many thousands of Museum specimens are withdrawn from the study collection and placed on public exhibition.

These may be incorporated into below, or into a variety of other exhibits.

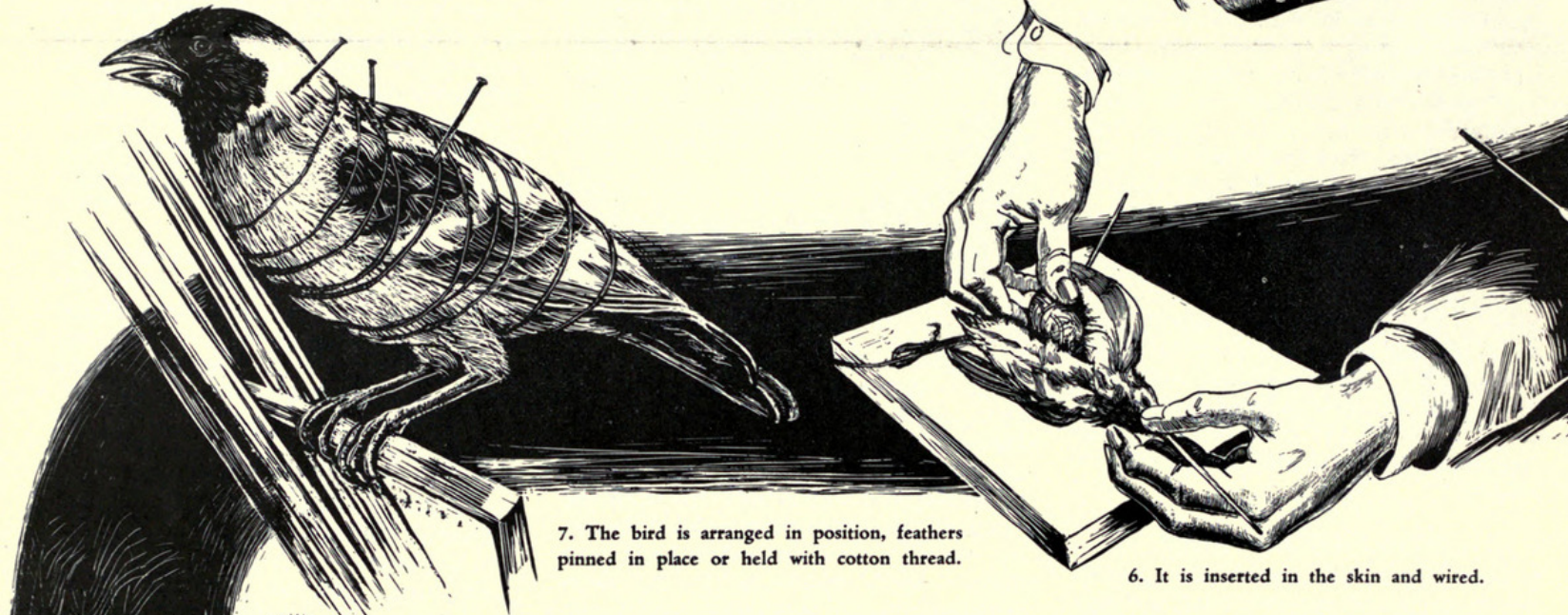


1. The first step: Choosing a perfect specimen.

2. It is dampened and placed into a relaxing box until soft.

3. The skin then is turned inside out and scraped.

4. Right it is like



5. The bird is arranged in position, feathers pinned in place or held with cotton thread.

6. It is inserted in the skin and wired.



8. Finished birds ready for the exhibit.

9. A background is painted, using photographs as a guide. 10. Leaves of lilies are made of wax and cotton.



# PRODUCTS

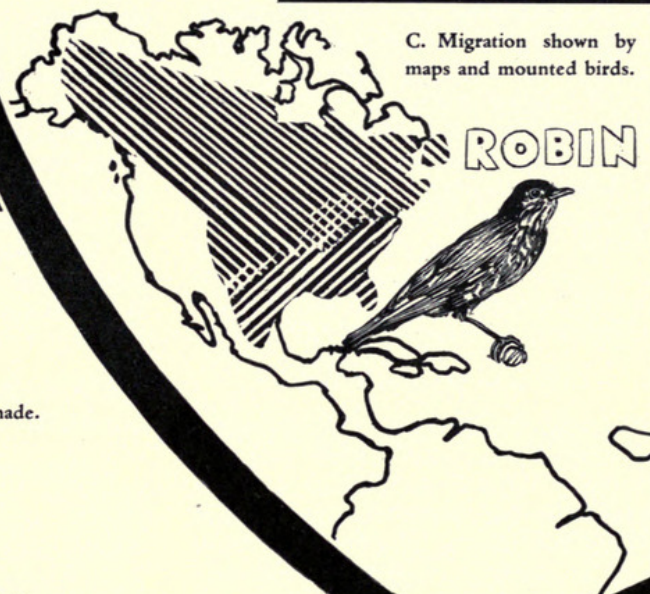
groups as shown  
illustrated at the right.



5. An artificial body of excelsior is made.



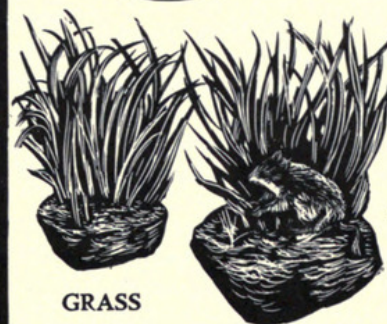
A. A transparent mirror turns a white winter ptarmigan to a 'brown summer' one.



C. Migration shown by maps and mounted birds.

## ENERGY FROM THE SUN

B. Links in the web of life  
sun — grass — mouse — owl



GRASS

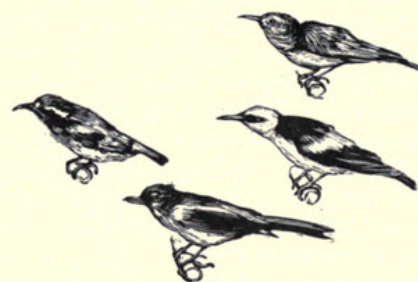
MOUSE



OWL

13. Specimens illustrate various things: the interdependence of living things and their environment; seasonal changes in color and in geographic range; and the variety and relationships of living things.

## AMERICAN HONEY CREEPER



D. The variety and relationships within the bird world in a systematic series.



Natural sedge is wired in place and colored, and groundwork is made of earth mixed with shellac.



12. The finished habitat group—an African landscape in Chicago.





Rand, Austin Loomer. 1955. "Exhibits: One of the Museum's Products."  
*Bulletin* 26(12), 4–5.

**View This Item Online:** <https://www.biodiversitylibrary.org/item/25710>

**Permalink:** <https://www.biodiversitylibrary.org/partpdf/371161>

**Holding Institution**

University Library, University of Illinois Urbana Champaign

**Sponsored by**

University of Illinois Urbana-Champaign

**Copyright & Reuse**

Copyright Status: In copyright. Digitized with the permission of the Chicago Field Museum.  
For information contact [dcc@library.uiuc.edu](mailto:dcc@library.uiuc.edu).

Rights Holder: Field Museum of Natural History

This document was created from content at the **Biodiversity Heritage Library**, the world's largest open access digital library for biodiversity literature and archives. Visit BHL at <https://www.biodiversitylibrary.org>.