



1. Mother suckling child



2. Woman with wrap-around skirt



3. Seated woman

Photographs by John



8. Man with musical rasp

9. Kneeling woman



10. Woman with long hair



11. Seated woman



ANCIENT ART OF

By DONALD COLLIER, *Curator of S*

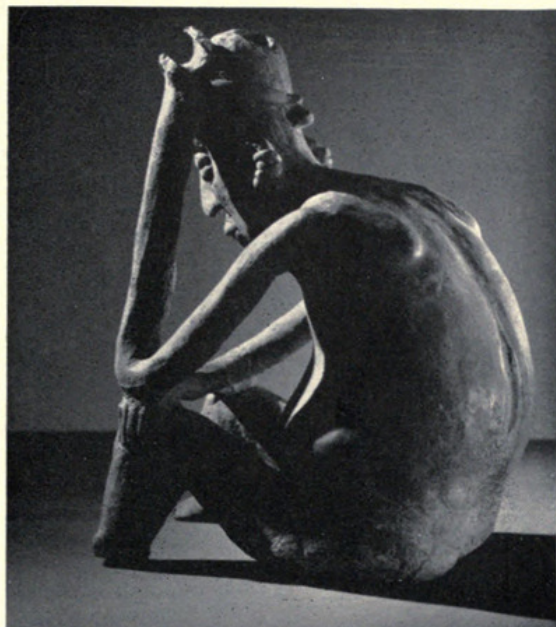
TWO recently installed exhibits in Hall 8 (Ancient and Mo of pre-Columbian clay sculpture from the Mexican states logical knowledge of western Mexico is meager, there are ex from tombs in the area by pot-hunters. These sculptures, grouped roughly into the Nayarit style, found in Nayarit and Colima and Jalisco. These two styles had their beginnings Christ and continued to flourish until about A.D. 700.

Nayarit sculpture (see cover and illustrations numbered 1, and sometimes the human figures appear to be caricatures.



ig dog

and Homer V. Holdren



4. Thinking man



5. Warrior with armor and club

WESTERN MEXICO

American Archaeology and Ethnology

Indians of Mexico and Central America) display examples of Nayarit, Jalisco and Colima. Although systematic archaeological private and museum collections of art objects removed which range from a few inches to two feet in height, can be the adjoining part of Jalisco, and the Colima style, found in during the Archaic or Formative stage several centuries before

(8, 9, 11) is characterized by simplification and exaggeration, men and women are depicted, engaged in workaday, ceremonial, or warlike activities. Their clothing, ornaments and body painting are shown by modeling, incising, and both positive and negative (resist) painting. A good example of this depiction of detail is the warrior shown at the right (No. 5) who wears armor of basketry and quilted cotton and carries a stone-headed club. The larger figures are hollow and have an opening at the top of the head.

Colima-style figures (illustrations 2, 3, 6, 7, 10) are naturalistic, refined and elegant. Instead of the mat, polychrome-painted surfaces of Nayarit sculpture, they have highly burnished red, brown, or black surfaces without textural or painted elaboration. The women have strong, tranquil faces and a pleasant solidity. The Colima sculptors also depicted mammals, birds, reptiles, fish and shellfish. Their favorite animal was the dog, of which they made a great variety of hollow effigies. Dogs were raised by the ancient Mexicans both for food and sacrificial offerings. It is not clear whether the Colima clay dogs were placed in tombs as food offerings or to represent dogs sacrificed at the funerals to assist their masters in the difficult journey to the land of the dead.



6. Hairless dog

7. Seated man





Collier, Donald. 1959. "Ancient Art of Western Mexico." *Bulletin* 30(2), 4–5.

View This Item Online: <https://www.biodiversitylibrary.org/item/25677>

Permalink: <https://www.biodiversitylibrary.org/partpdf/371317>

Holding Institution

University Library, University of Illinois Urbana Champaign

Sponsored by

University of Illinois Urbana-Champaign

Copyright & Reuse

Copyright Status: In copyright. Digitized with the permission of the Chicago Field Museum.

For information contact dcc@library.uiuc.edu.

Rights Holder: Field Museum of Natural History

This document was created from content at the **Biodiversity Heritage Library**, the world's largest open access digital library for biodiversity literature and archives. Visit BHL at <https://www.biodiversitylibrary.org>.