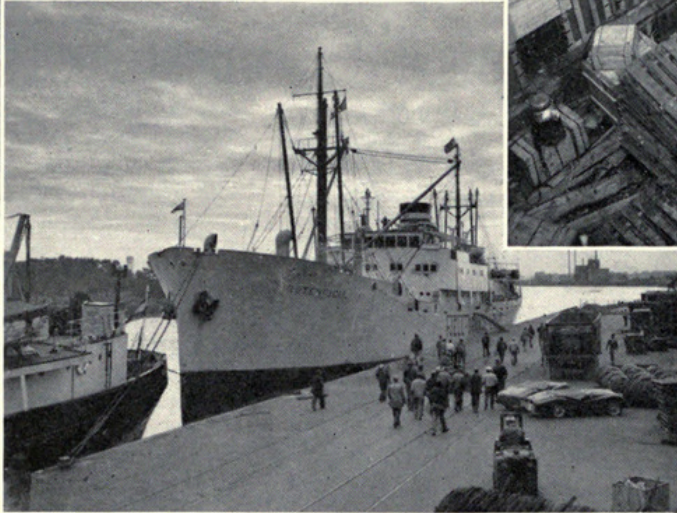




Captain Fuller and Curator Force during documentation and packing in London.



S.S. Rutenfjell with the Fuller Collection on board.

One of four huge cases containing specimens as it was stowed in ship's hold for voyage.

Four tons of Pacific Island at Chicago's

THE PA

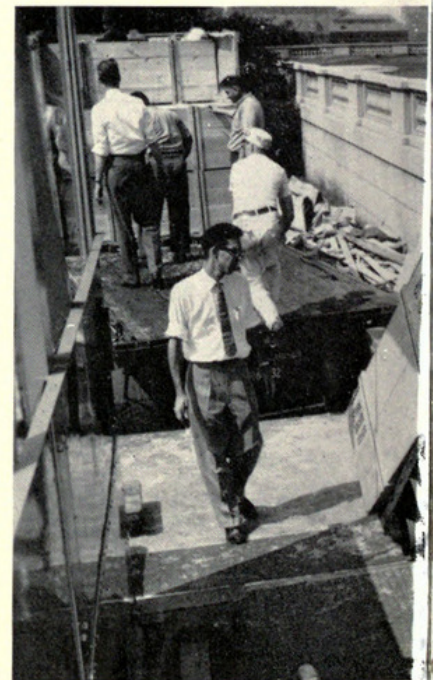
Museum Member of archaeological and the first public exhibit ago (BULLETIN, Sept part of the Museum's collection itself, but the Curator of Oceanic Ar of the collectors and a journey from London



Museum personnel dismantling a large shipping case.



Specially built boxes containing long specimens required a number of men because of their weight.



Individual boxes were checked as for their last



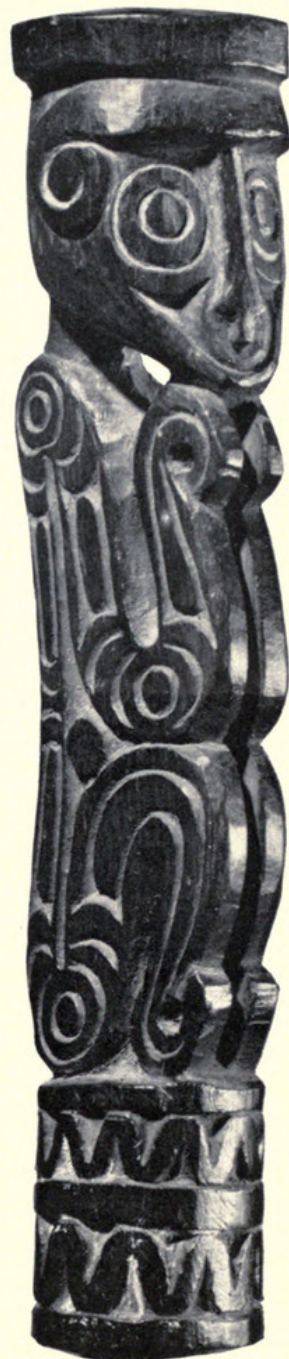
Materials being hoisted ashore
at the Museum Harbor.



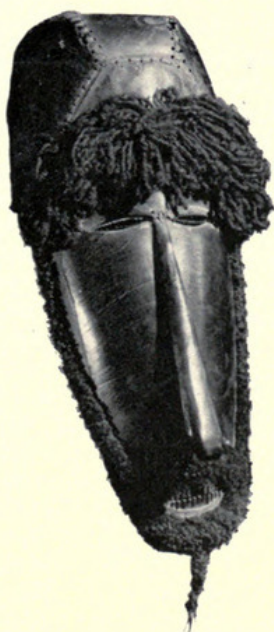
Safe arrival at the Museum.

PACIFIC'S BEST COMES TO CHICAGO

All will have the opportunity of viewing selected specimens from the famed Fuller Collection of ethnological materials from the South Seas on Members' Night, May 8, 1959. This will be the first of this collection since it was begun by Captain A. W. F. Fuller of London over 60 years ago (see page 1, November, 1958). This remarkable assemblage of objects from the Pacific world now forms a nucleus of the Pacific Research Laboratory. The Museum is fortunate to have acquired not only the objects but the wealth of documentation supplied by Captain and Mrs. Fuller. Dr. Roland W. Force, Director of the Department of Anthropology and Ethnology, spent six months of 1958 in London where he recorded the remarks of Captain Fuller regarding the collection. On these pages an abbreviated version of the collection's contents as they appear in the Museum is depicted.



Crates were loaded onto the freight elevator
on their long journey.



Dance Mask from the
Torres Straits.



Safely ensconced in the Museum's Pacific Research Laboratory,
several rare items are examined by President Field as members of
the press note details.



1959. "The Pacific's Best Comes to Chicago." *Bulletin* 30(5), 4–5.

View This Item Online: <https://www.biodiversitylibrary.org/item/25677>

Permalink: <https://www.biodiversitylibrary.org/partpdf/371329>

Holding Institution

University Library, University of Illinois Urbana Champaign

Sponsored by

University of Illinois Urbana-Champaign

Copyright & Reuse

Copyright Status: In copyright. Digitized with the permission of the Chicago Field Museum.

For information contact dcc@library.uiuc.edu.

Rights Holder: Field Museum of Natural History

This document was created from content at the **Biodiversity Heritage Library**, the world's largest open access digital library for biodiversity literature and archives. Visit BHL at <https://www.biodiversitylibrary.org>.