

Genus *TWININGIA* Ball

The author has previously referred *Scaphoideus blandus* Ball, *pellucidus* Ball (= *irroratus* Osb.) *fumidus* Ball and *bicolor* Ball to this genus and described *magnata* and *malvastra*. These forms are related to *Mesamia* rather than to *Scaphoideus*.

PALEONTOLOGY.—*A new species of Cancer from the Pliocene of the Los Angeles basin.*¹ MARY J. RATHBUN, National Museum.

From Prof. U. S. Grant, University of California, Los Angeles, has been received for report a species of *Cancer* unlike any hitherto described.

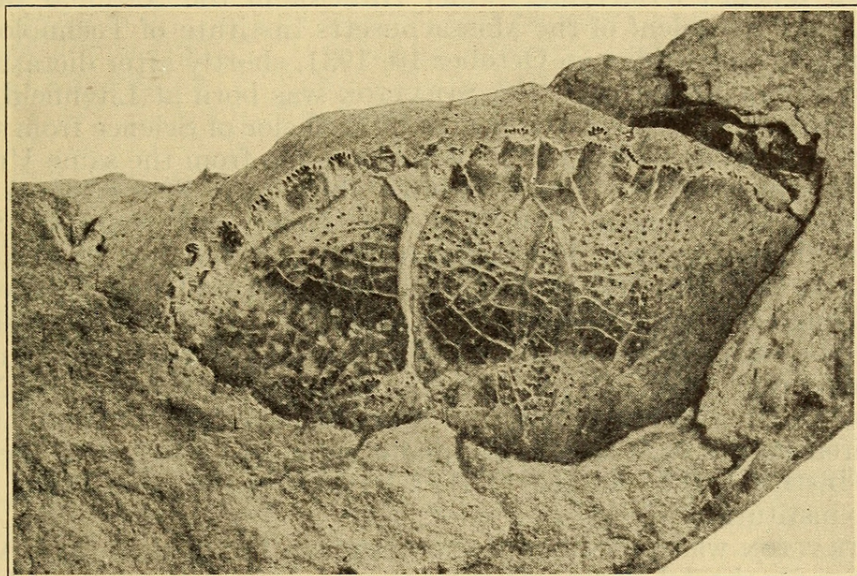


Fig. 1. *Cancer granti* Rathbun, sp. nov. Anterior portion of carapace, $\times 1\frac{1}{2}$.

***Cancer granti* Rathbun, sp. nov.**

Fig. 1.

A portion of the anterior half of the carapace is exposed; surface thickly covered with minute punctae; granules visible to the naked eye are loosely scattered in groups on the protogastric, mesogastric, hepatic and epibranchial regions; a tubercle behind inner angle of orbit; interregional grooves shallow; anterior and antero-lateral margins bordered by elongate granules or blunt spinules; lateral teeth upturned; the second tooth from the orbit is narrow, little more than half as wide as the third tooth; fourth and fifth teeth subequal, slightly narrower than third; the surface of the front between orbits has 3 longitudinal furrows, the margin is obscure. Estimated width of carapace 56.5 mm.

¹ Received November 23, 1931.



Rathbun, Mary Jane. 1932. "A new species of Cancer from the Pliocene of the Los Angeles basin." *Journal of the Washington Academy of Sciences* 22, 19–19.

View This Item Online: <https://www.biodiversitylibrary.org/item/123322>

Permalink: <https://www.biodiversitylibrary.org/partpdf/50709>

Holding Institution

Smithsonian Libraries and Archives

Sponsored by

Biodiversity Heritage Library

Copyright & Reuse

Copyright Status: Permission to digitize granted by the rights holder

Rights: <https://www.biodiversitylibrary.org/permissions/>

This document was created from content at the **Biodiversity Heritage Library**, the world's largest open access digital library for biodiversity literature and archives. Visit BHL at <https://www.biodiversitylibrary.org>.