

Fig. 2. *Volucella nigra* Greene, pupa, lateral view.

" 2 c. " " " antero-dorsal spiracle, lateral view.

" 3. " *anna* Williston, lateral view of face.

" 4. " " " portion of wing.

" 5. " *nigra* Greene, lateral view of face.

" 6. " " " portion of wing.

A NEW MACROCENTRUS REARED FROM THE STRAWBERRY LEAF-ROLLER (HYMENOPTERA, BRACONIDAE).

BY S. A. ROHWER, *Bureau of Entomology, Washington, D. C.*

This new parasite is described at this time so as to make the name available for a forthcoming article on the strawberry leaf roller (*Ancylis comptana*).

Macrocentrus ancylivora, new species.

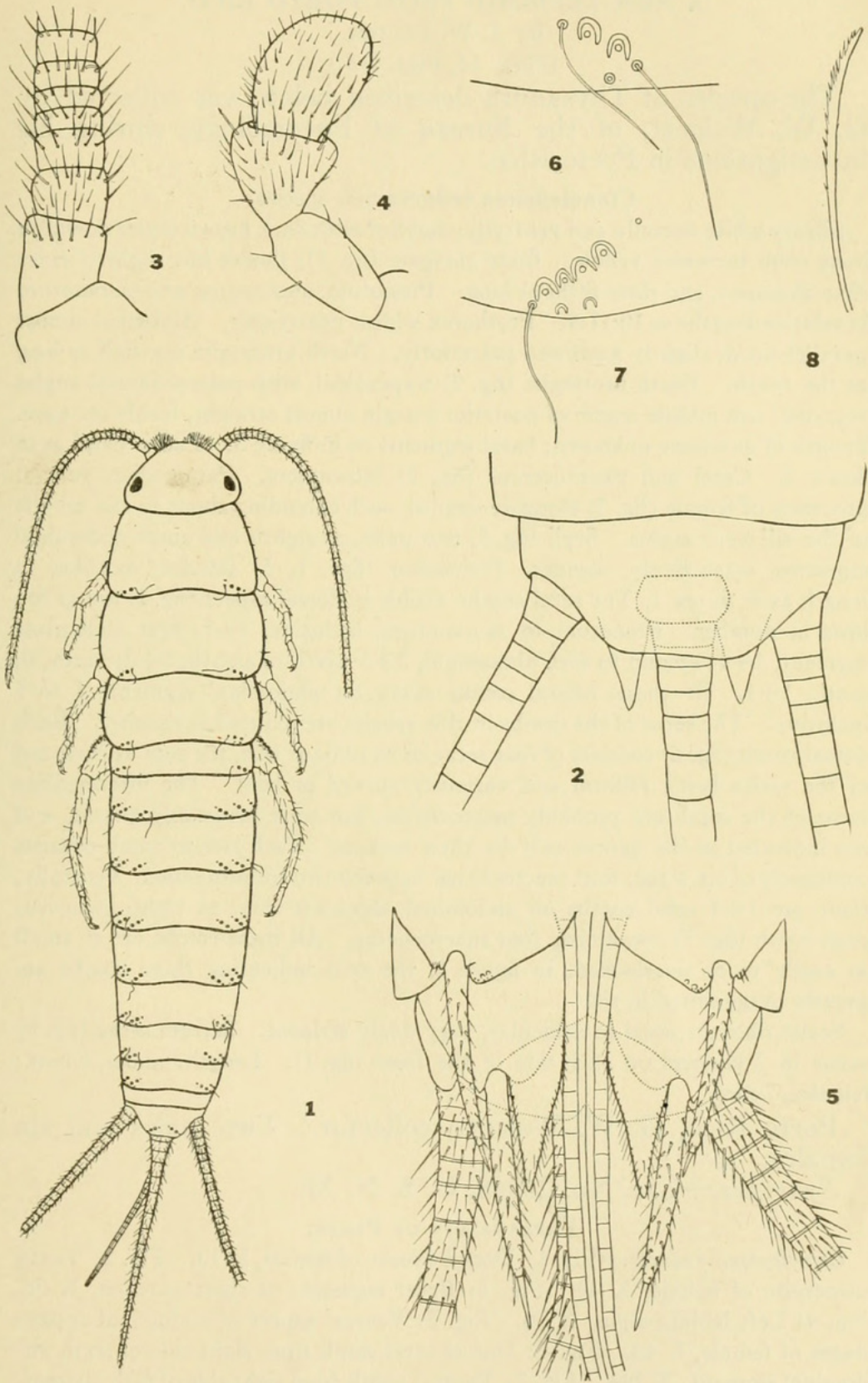
Female.—Length, 4.5 mm. Length of ovipositor (beyond the end of the abdomen) 5.5 mm.; length of anterior wing, 4 mm. Clypeus truncate; face shining, with distinct, widely separated setigerous punctures; antennae 44-jointed; scutum, prescutum, scutellum polished, impunctate; notauli and their posterior projection foveolate; the suture in front of the scutellum broad and with a median longitudinal ridge; propodeum shining basally, without distinct sculpture, posterior portion with irregular transverse rugae on a slightly granular surface; mesepisternum polished, with a few widely scattered setigerous punctures; the distance between the spiracles of the first tergite distinctly greater than the distance from one spiracle to the base of the tergite; at the base of the first tergite a broad, shallow excavation which extends beyond a line drawn tangent to the spiracles and is bounded laterally by distinct ridges; first tergite with fine, rather regular longitudinal striae; second tergite and base of the third with fine longitudinal aciculations which are deeper and better defined at the base of the second tergite; lateral depressed area of the second tergite polished and extending a short distance beyond the middle; nervellus post-furcal by a distance approximately equal to its length. Ferruginous; interocellar area black; flagellum dark piceous; wings hyaline, strongly iridescent; venation pale brown; stigma testaceous with the anterior margin brown.

Male.—Length, 3.5 mm. Length of anterior wing, 2.75 mm. Agrees with above description of the female except punctures on the face and mesepisternum are more widely separated and the sculpture of the tergites is finer. Antennae 42-jointed.

Paratypes show very little variation. A few of the males have the apical tergites piceous. The antennae of the males vary from 42 to 44 joints; those of the female from 44 to 48 joints.

Type-locality.—Riverton, New Jersey. Described from eleven females (one type) and eight males (one allotype) under Chittenden number 6800⁰¹, which were reared July 2-8, 1920, from the larvae of *Ancylis comptana* by D. E. Fink.

Type.—Cat. No. 26534, U. S. N. M.



FOLSOM—CTENOLEPISMA REDUCTA



Rohwer, S. A. 1923. "A new *Macrocentrus* reared from the strawberry leaf roller (Hymenoptera: Braconidae)." *Proceedings of the Entomological Society of Washington* 25, 168–169.

View This Item Online: <https://www.biodiversitylibrary.org/item/54667>

Permalink: <https://www.biodiversitylibrary.org/partpdf/54248>

Holding Institution

Smithsonian Libraries and Archives

Sponsored by

Smithsonian

Copyright & Reuse

Copyright Status: In copyright. Digitized with the permission of the rights holder.

License: <http://creativecommons.org/licenses/by-nc-sa/3.0/>

Rights: <https://biodiversitylibrary.org/permissions>

This document was created from content at the **Biodiversity Heritage Library**, the world's largest open access digital library for biodiversity literature and archives. Visit BHL at <https://www.biodiversitylibrary.org>.