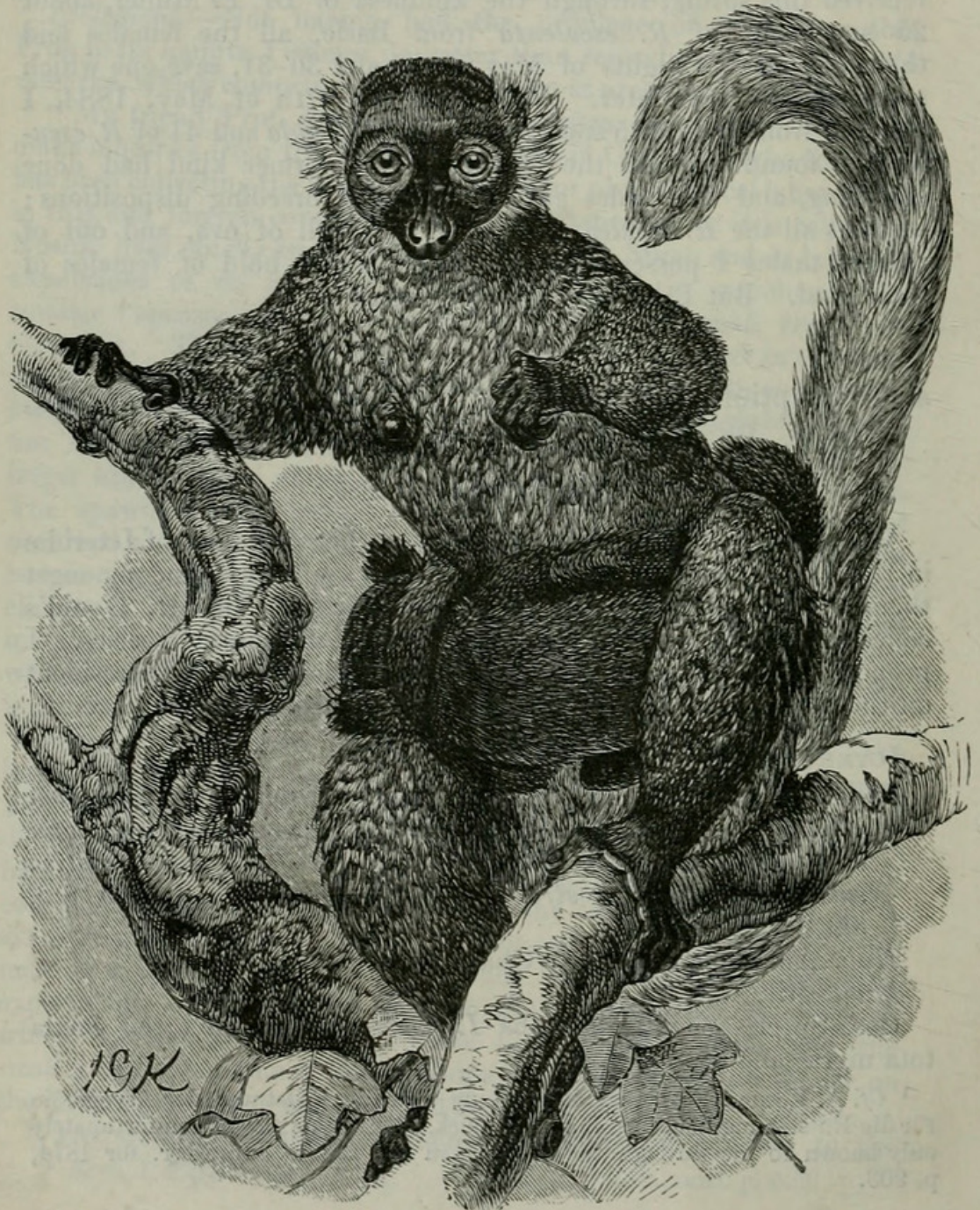


5. Note on *Lemur macaco*, and the way in which it carries its Young. By P. L. SCLATER, M.A, Ph.D., F.R.S., Secretary to the Society.

[Received June 12, 1885.]

It is now well known that the White-whiskered Lemur (*Lemur leucomystax*, P. Z. S. 1880, p. 451 ; P. Z. S. 1862, p. 347, pl. xli.) is the female of the Black Lemur (*Lemur macaco*). For the last few years we have had pairs of this species living together in the Society's Gardens. The female of a pair of Black Lemurs purchased of Mr. A. H. Jamrach on the 1st August, 1882 (sp. no. 116 of



Lemur macaco female and young.





Sclater, Philip Lutley. 1885. "5. Note on Lemur macaco, and the way in which it carries its Young." *Proceedings of the Zoological Society of London* 1885, 672–673. <https://doi.org/10.1111/j.1469-7998.1885.tb07871.x>.

View This Item Online: <https://www.biodiversitylibrary.org/item/97225>

DOI: <https://doi.org/10.1111/j.1469-7998.1885.tb07871.x>

Permalink: <https://www.biodiversitylibrary.org/partpdf/73108>

Holding Institution

Natural History Museum Library, London

Sponsored by

Natural History Museum Library, London

Copyright & Reuse

Copyright Status: Public domain. The BHL considers that this work is no longer under copyright protection.

This document was created from content at the **Biodiversity Heritage Library**, the world's largest open access digital library for biodiversity literature and archives. Visit BHL at <https://www.biodiversitylibrary.org>.