

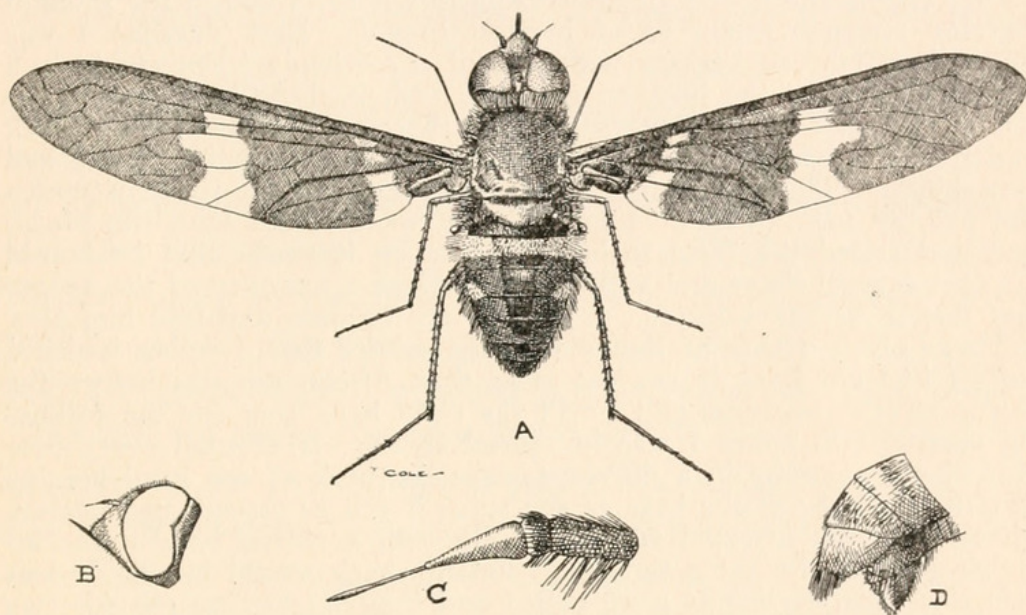
## A new Species of *Exoprosopa* (Dip.).

By F. R. COLE, Bureau of Entomology, U. S. Department of Agriculture.\*

### *Exoprosopa celer* sp. nov.

♂. Length 9 mm. Wing 12.5 mm. Face yellowish brown, the color extending a short distance above antennae. Front blackish, with yellowish tomentum and short black pile. Short black pile on face. Occiput blackish with silvery white tomentum near orbits, thicker near emargination of eyes. First joint of antennae reddish brown, the second and third joints black. Arista as long as third joint.

Thorax blackish, semi-shining. Scutellum dull reddish brown, black at base.



A. *Exoprosopa celer* sp. nov. B. Lateral view of head. C. Antenna (much enlarged). D. Anal segments of male from side.

Abdomen light reddish brown, first segment black. Black stripe on dorsum of abdomen, gradually narrowing from base, and reaching only about half way on sixth segment. Black does not quite reach posterior margin of segments. Abdomen with black tomentum. White tomentose cross-band at base of second abdominal segment. White spot on each side of third segment near posterior margin.

Legs reddish. Front tarsi darkened and very slender.

Wings very long and narrow, and deep brownish black in color. Narrow hyaline cross-band near base of wing, clear only in anal and axillary cells. Hyaline band in center of wing reaches to marginal cell.

*Type*—United States National Museum, Cat. No. 20,295. One male.

*Habitat*—East Highlands, California, Sept. 17, 1914.

This handsome species appears to have no closely related forms among those so far described. Only one specimen was collected. It is a very swift flyer, alighting on rocks and sand in the hot sun.

---

\*By permission of the Secretary of Agriculture.



1916. "A new species of *Exoprosopa*." *Entomological news, and proceedings of the Entomological Section of the Academy of Natural Sciences of Philadelphia* 27, 463–463.

**View This Item Online:** <https://www.biodiversitylibrary.org/item/20187>

**Permalink:** <https://www.biodiversitylibrary.org/partpdf/7872>

**Holding Institution**

Smithsonian Libraries and Archives

**Sponsored by**

Smithsonian

**Copyright & Reuse**

Copyright Status: NOT\_IN\_COPYRIGHT

This document was created from content at the **Biodiversity Heritage Library**, the world's largest open access digital library for biodiversity literature and archives. Visit BHL at <https://www.biodiversitylibrary.org>.